

**BARNES • PROSSER • CROWN SERVICE PARTS**

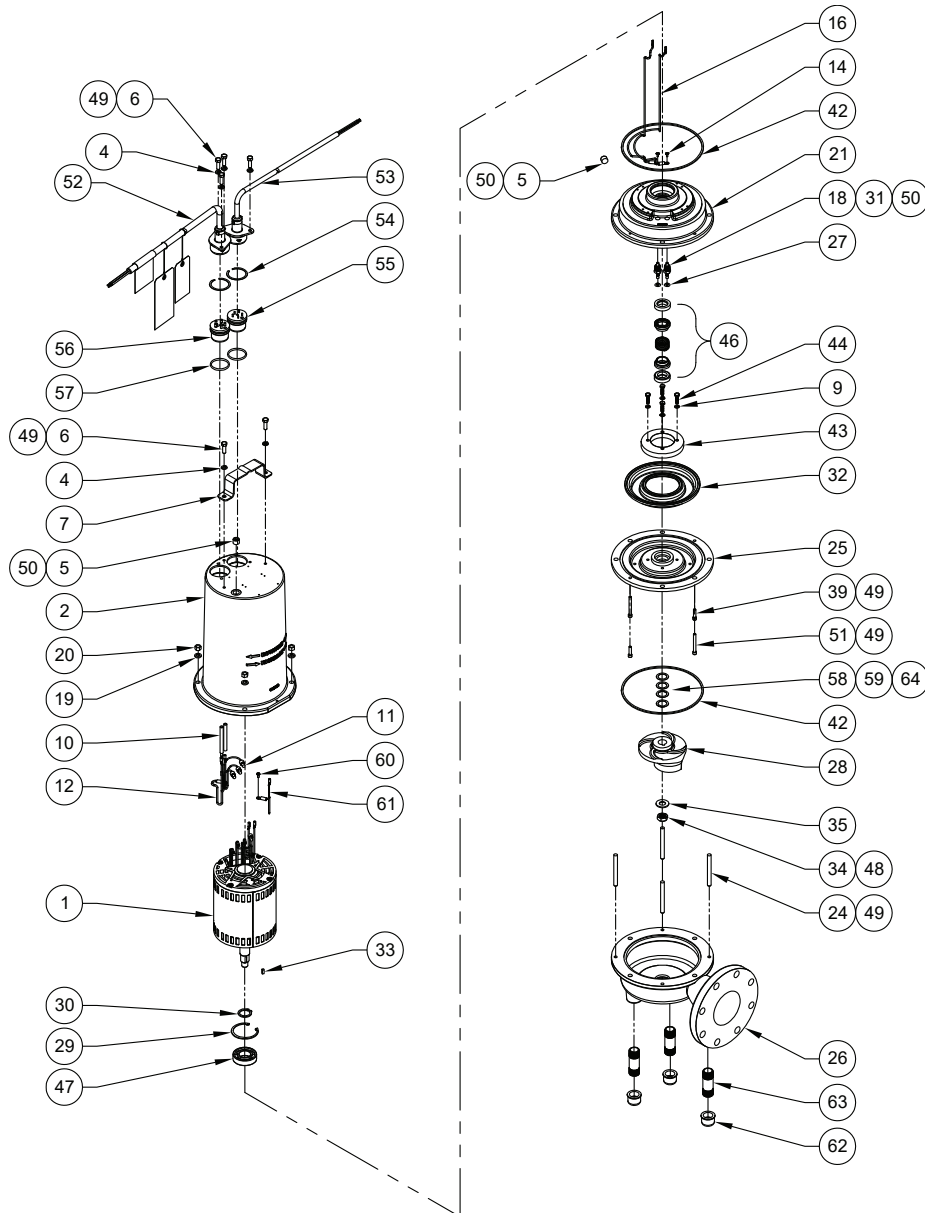
**MODEL**  
4SE5032L  
4SE5042L  
4SE5052L

**PART NO.**  
133156  
133157  
133158



**Questions? Call 1-800-810-1053**

Manual: 133406



**Continued →**

# Series 4SE-L

4" Horizontal Discharge - Submersible Non-Clog Pumps  
5HP, 3450RPM

# BARNES®

www.cranepumps.com

## BARNES • PROSSER • CROWN SERVICE PARTS

### PARTS LIST

ITEM	QTY	PART NO.	DESCRIPTION	NOTES
1	1	088754	Motor, 4SE5032L, 4SE5042L	230/460V, 3Phase, 3450RPM
		088756	Motor, 4SE5052L	575V, 3Phase, 3450RPM
2	1	114492HA	Motor Housing, Double Cords	Power and Sensor Cord (STD)
	1	114492	Motor Housing, Single Cord	Power Cord ONLY (Optional)
4	6	026322	5/16" Lock Washer	SS
5	2	014270	3/8" NPT Pipe Plug	ZP
6	6	1-156-1	HXHD Cap Screw	5/16-18 x 1" LG, SS
7	1	103503	Handle	SS
9	4	20-13-1	1/4" Lock Washer	SS
10	2	625-02117	Fiberglass Sleeve	230V, 3Phase
	1	625-02117	Fiberglass Sleeve	460V, 3Phase, 575V, 3Phase
11	4	105150	Wire Crimp Connector	230V, 3Phase
	3	105150	◆ Wire Crimp Connector	460/575V, 3Phase
12	3	105149A	◆ Jumper Wire	230V, 3 Phase
13	150 oz.	029034	Oil- Motor Housing	
	40 oz.	029034	Oil - Seal Cavity	
14	2	038156	Machine Screw	#6-32 x 3/8" LG, ZP
16	1	133403B	Moisture Sensor Wire	Red
	1	133403A	Moisture Sensor Wire	Orange
18	2	066843	Moisture Electrode	
19	4	20-14-1	3/8" Lock Washer	SS
20	4	15-23-1	3/8-16 Hex Nut	SS
21	1	065892	Bearing Bracket	CI
24	4	066103	Stud	3/8-16 x 3-7/8" LG, SS
25	1	065893	Seal Plate	CI
26	1	066744	Volute	CI
27	2	039934	Moisture Electrode Cap Plug	
28	1		<b>Impeller, Cast Iron</b>	
		088545	5.00" Dia. (STD)	
		088545TA	4.88" Dia.	
		088545TB	4.75" Dia.	
		088545TC	4.63" Dia.	
		088545TD	4.50" Dia.	
		088545TE	4.38" Dia.	
		088545TF	4.25" Dia.	
		088545TG	4.13" Dia.	
		088545TH	4.00" Dia.	
		088545TJ	3.88" Dia.	
		088545TK	3.75" Dia.	
		088545TL	3.63" Dia.	
		088545TM	3.50" Dia.	
29	1	066130	◆ Retaining Ring	
30	1	057882	◆ Retaining Ring	
31	2	003217	1/4" NPT Sq. Pipe Plug	ZP (When Item 18 Not Used)
32	1	022873	†◆ Diaphragm	Buna-N
33	1	057554	◆ Shaft Key	3/16 Sq x .585" LG, SS
34	1	038132	◆ 5/8-18Hex Nut	SS
35	1	070320	◆ 5/8" Flat Washer	SS

Continued →

SECTION 1D  
PAGE 58  
DATE 7/12

**CRANE**  
®

A Crane Co. Company

PUMPS & SYSTEMS

USA: (937) 778-8947 • Canada: (905) 457-6223 • International: (937) 615-3598

### BARNES • PROSSER • CROWN SERVICE PARTS

#### PARTS LIST

ITEM	QTY	PART NO.	DESCRIPTION	NOTES
39	2	11-32-1	SKHD Cap Screw	1/4-20 x 1" LG, SS
42	2	033730	† Square Ring	Buna-N
43	1	022879	Diaphragm Clamp Ring	AL
44	4	1-7-1	Cap Screw	1/4-20 x 1" LG, SS
46	1	064434 071796 071796D 064434SD	† Shaft Seal (Both Ends) (Pump End) (Both Ends) (Pump End)	Carbon/Ceramic/Buna-N (STD) Tungsten/Tungsten/Buna-N Tungsten/Tungsten/Buna-N Silicone Carbide/Silicone Carbide/Buna-N
47	1	053746	◆ Ball Bearing	
48	A/R	-----	Loctite Adhesive, #RC603	Green
49	A/R	-----	Loctite Adhesive, #242-41	Blue
50	A/R	-----	Loctite PST, #567	White Pipe Sealant
51	2	066192	SKHD Cap Screw	1/4-20 x 2-1/4" LG, SS
52	1	See Table 3	Power Cord Assembly	
53	1	See Table 3	Sensor Cord Assembly	
54	2	105197	◆ Retainer Ring	
55		See Table 3	Sensor Cord Terminal Block	
56		See Table 3	Power Cord Terminal Block	
57	2	2-31051-224	† O-Ring	Buna-N
58	2	026989	Shim, .005	Use as required
59	2	028120	Shim, .010	Use as required
60	2	016660	Self Tap Screw	#8-32 x 3/8" LG, SS
61	1	105111	Ground Wire	Sensor Cable Assy. Ground
	1	105111	Ground Wire	460V, 3 Phase, 575V, 3 Phase
	1	105111B	Ground Wire	230V, 3 Phase
62	3	003479	3/4" NPT Pipe Cap	
63	3	005808	Pipe Nipple	3/4" NPT x 3" Galvanized
	1	111909	Jumper Wire	
64	A/R	028121	Shim, .030 (Use as Required)	

TABLE 3 - POWER AND SENSOR CORD SETS

MODEL NUMBER	30 FT. POWER	50 FT. POWER	100 FT. POWER	TERMINAL BLOCK POWER
4SE5032L	109492XC	109492XF	109492XL	103586
4SE5042L	103742XC	103742XF	103742XL	103583
4SE5052L	103742XC	103742XF	103742XL	103583
MODEL NUMBER	30 FT. POWER	50 FT. POWER	100 FT. POWER	TERMINAL BLOCK POWER
4SE5032L	113288XC	113288XF	113288XL	113272
4SE5042L	113288XC	113288XF	113288XL	113272
4SE5052L	113288XC	113288XF	113288XL	113272

Order Online: [www.PumpCatalog.com](http://www.PumpCatalog.com)

End