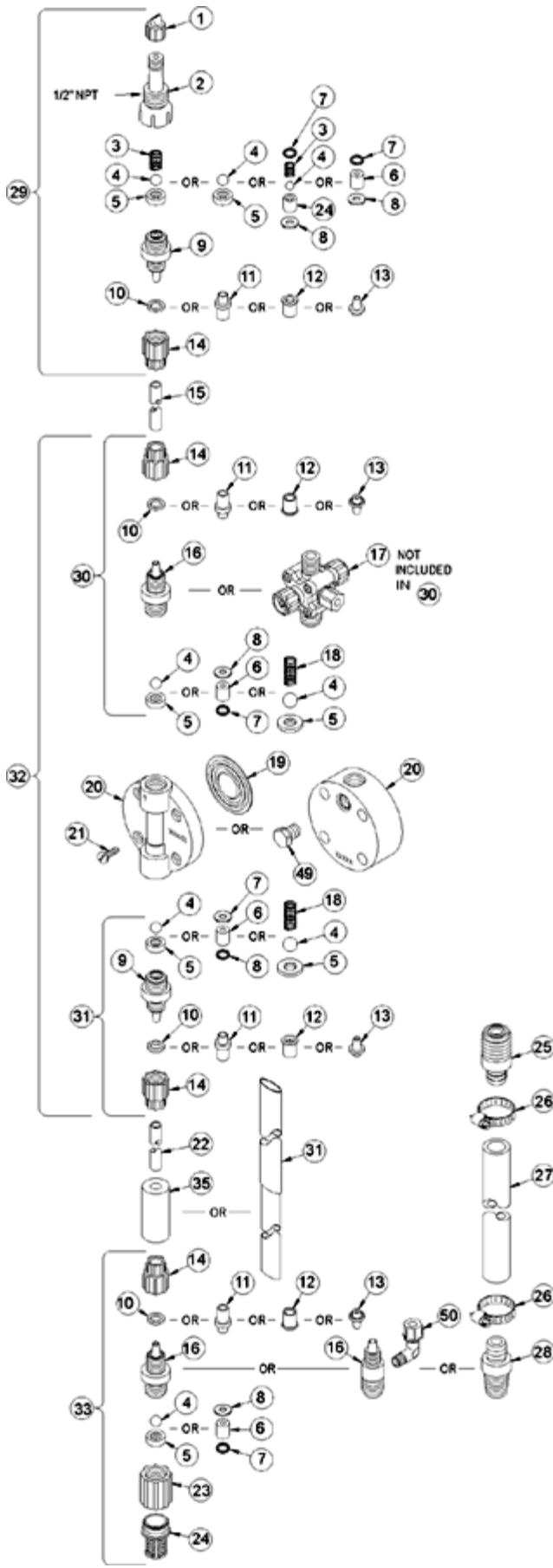
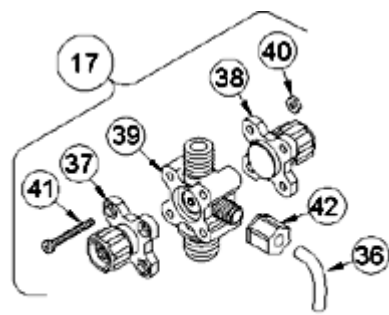


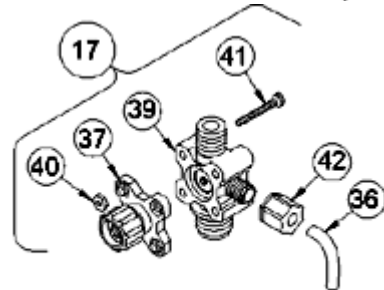
**LE-313BP**



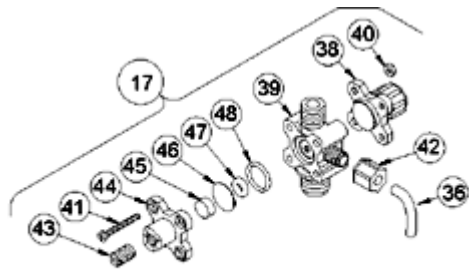
Key #	Part #	Description	Qty
1	27352	FLAPPER VALVE ,SANTOPRENE	1
2	37351	FITTING, LIQUIPRO, PVDF	1
3	37341	SPRING, COMPRESSION	1
4	10338	BALL, .375 CERAMIC	1
6	36306	CARTRIDGE ASM, .375 PVDF/TEFLON	3
7	36103	O-RING,POLYPREL	4
8	36107	WASHER, CARTRIDGE VALVE	4
16	37119	FITTING,1/4 NPT PVDF	3
17	36393	VALVE ASM, A/S BLEED,1/4' NPT PVDF	1
19	31419	LIQUIFRAM, 3.0, FLUOROFILM	1
20	36128	HEAD, MOLDED 3.0 PVDF	1
21	10340	SCREW, 10-24 X .75 PH SS	4
23	36204	COUPLING, FOOT VALVE PP	1
24	10123	STRAINER, FOOT VALVE PP	1
29	37360	VALVE ASM, INJ 1/4' NPT,PVDF	1
31	36366	VALVE ASM, SUC 1/4' NPT	1
34	37340	SEAT, PTFE	1
36	25636-10	TUBING, .250 X .062 PE	1
38	36280	CAP ASM, A/S	1
39	37223	VALVE BODY,4FV/BLEED 1/4 NPT PVDF	1
40	25628	NUT, 6-32 HEX SS	4
41	25627	SCREW, 6-32 X 1.25 PH SS	4
42	25631	NUT, RELIEF TUBING	1
43	34876	SCREW, BLEED	1
44	32171	CAP, THREADED RELIEF	1
45	34868	DISK, .490 OD X .20	1
47	32175	O-RING, .234 ID X .139 W	1
48	32176	O-RING, .676 ID X .070 W	1



**4-FUNCTION VALVE (4FV)**



**3-FUNCTION VALVE (3FV)**



4-FUNCTION BLEED VALVE (B-4FV)

[Return to selection page](#)