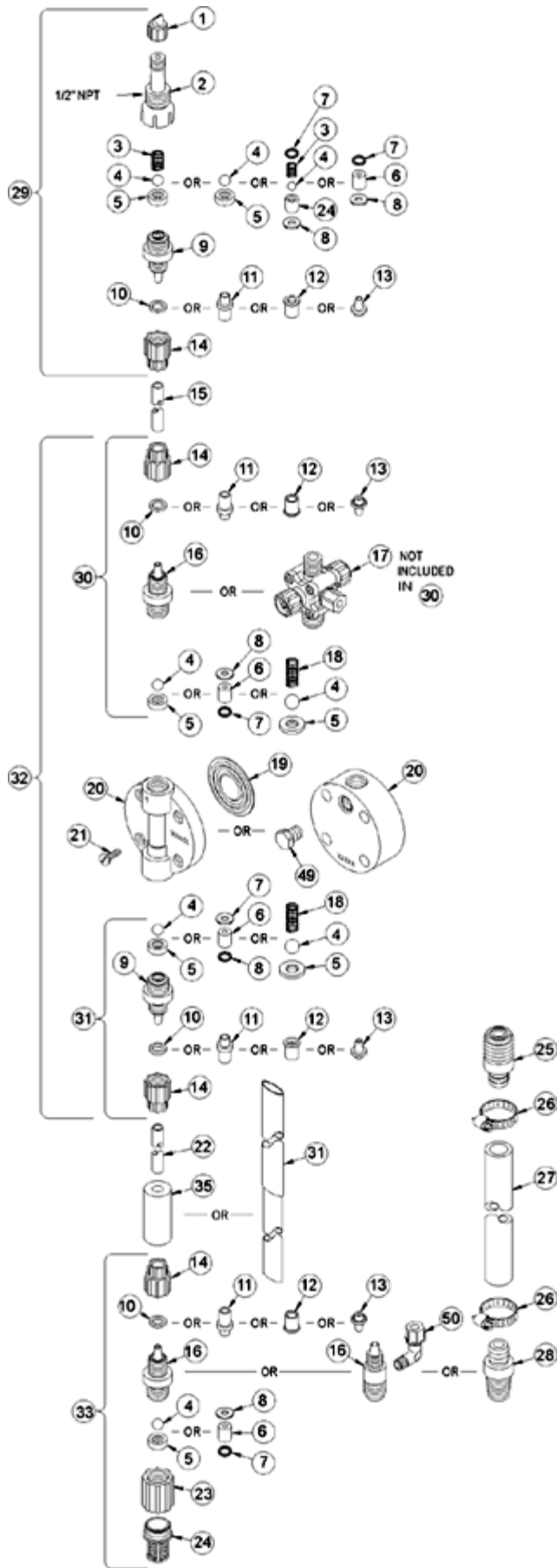
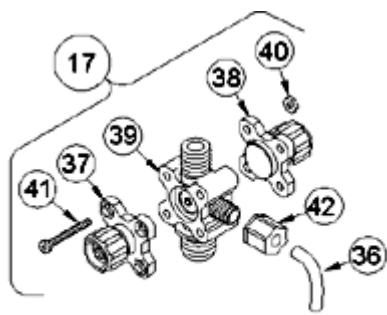


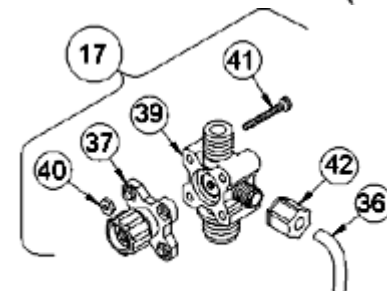
LE-313SM



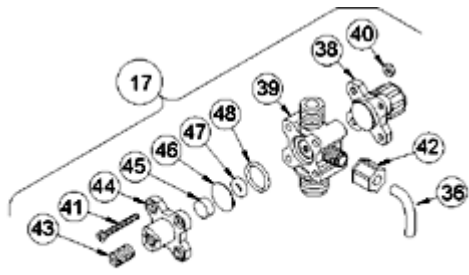
| Key # | Part # | Description | Qty |
|-------|----------|---------------------------------|-----|
| 1 | 27352 | FLAPPER VALVE ,SANTOPRENE | 1 |
| 2 | 37351 | FITTING, LIQUIPRO, PVDF | 1 |
| 3 | 37341 | SPRING, COMPRESSION | 1 |
| 4 | 10338 | BALL, .375 CERAMIC | 1 |
| 6 | 36306 | CARTRIDGE ASM, .375 PVDF/TEFLON | 3 |
| 7 | 36103 | O-RING,POLYPREL | 4 |
| 8 | 36107 | WASHER, CARTRIDGE VALVE | 4 |
| 10 | 37203 | CLAMP RING, 1/2' | 3 |
| 14 | 10411 | COUPLING NUT, PP 1/2 | 3 |
| 16 | 37117 | FITTING,1/2 TUBING PVDF | 3 |
| 17 | 36277 | VALVE ASM, 4FV 1/2' PVDF | 1 |
| 19 | 31419 | LIQUIFRAM, 3.0, FLUOROFILM | 1 |
| 20 | 36128 | HEAD, MOLDED 3.0 PVDF | 1 |
| 21 | 10340 | SCREW, 10-24 X .75 PH SS | 4 |
| 23 | 36204 | COUPLING, FOOT VALVE PP | 1 |
| 24 | 10123 | STRAINER, FOOT VALVE PP | 1 |
| 29 | 37358 | VALVE ASM, INJ 1/2' PVDF | 1 |
| 31 | 36360 | VALVE ASM, SUC 1/2' PVDF,PTFE | 1 |
| 34 | 37340 | SEAT, PTFE | 1 |
| 35 | 10322 | WEIGHT, SUCTION TUBING | 1 |
| 36 | 25636-10 | TUBING, .250 X .062 PE | 1 |
| 37 | 36260 | CAP ASM, RELIEF | 1 |
| 38 | 36280 | CAP ASM, A/S | 1 |
| 39 | 37231 | VALVE BODY,4FV/BLEED 1/2 PVDF | 1 |
| 40 | 25628 | NUT, 6-32 HEX SS | 4 |
| 41 | 25627 | SCREW, 6-32 X 1.25 PH SS | 4 |
| 42 | 25631 | NUT, RELIEF TUBING | 1 |



4-FUNCTION VALVE (4FV)



3-FUNCTION VALVE (3FV)



4-FUNCTION BLEED VALVE (B-4FV)

[Return to selection page](#)