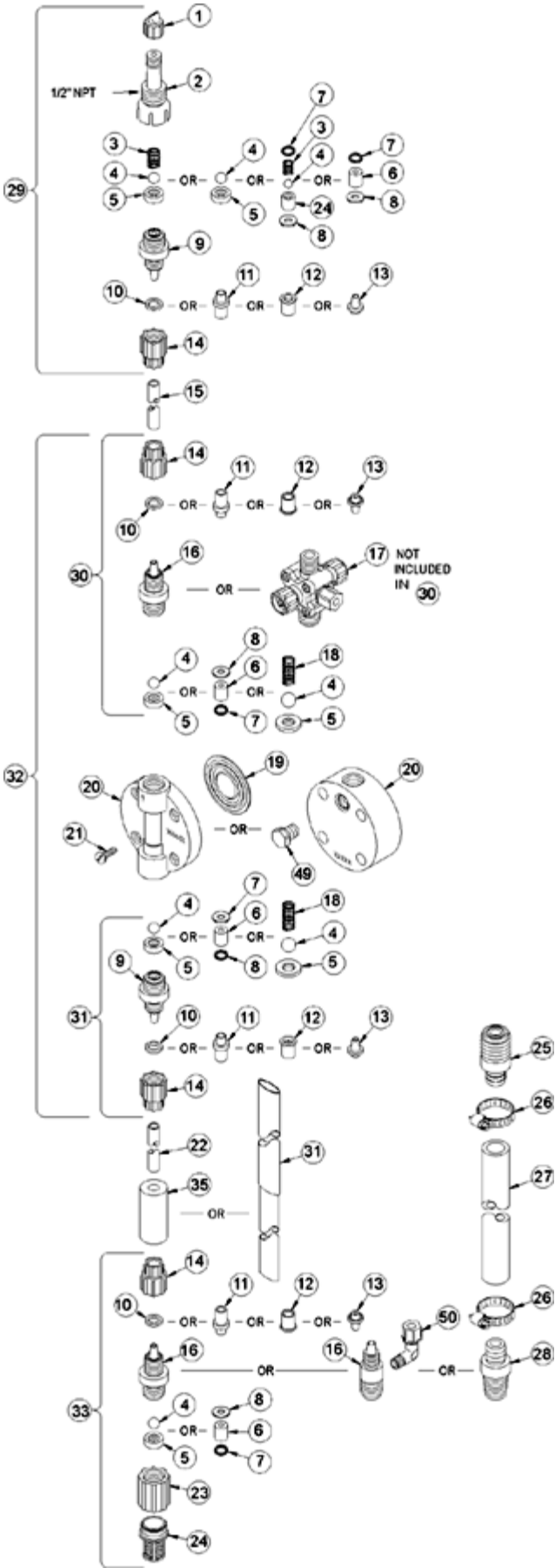
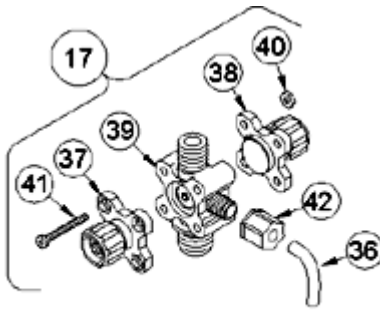


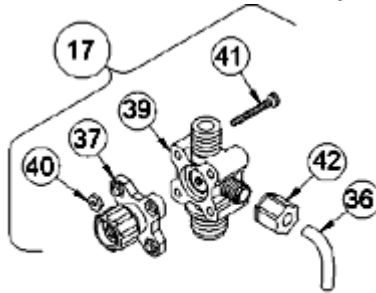
LE-318TP



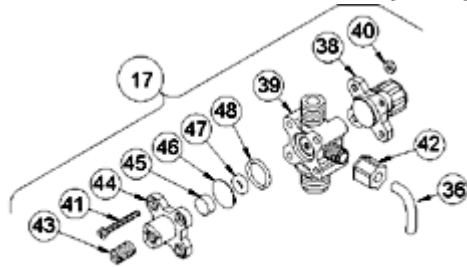
Key #	Part #	Description	Qty
1	27352	FLAPPER VALVE ,SANTOPRENE	1
2	37351	FITTING, LIQUIPRO, PVDF	1
3	37341	SPRING, COMPRESSION	1
4	10338	BALL, .375 CERAMIC	1
6	36307	CARTRIDGE ASM, .375 PVDF/POLYPREL	3
7	36103	O-RING,POLYPREL	4
8	36107	WASHER, CARTRIDGE VALVE	4
16	37767	FITTING,1/4 NPT PVC	3
17	38062	VALVE ASM, 3FV 1/4' NPT PVC	1
19	31419	LIQUIFRAM, 3.0, FLUOROFILM	1
20	37756	HEAD, 3.0 MOLDED PVC	1
21	10340	SCREW, 10-24 X .75 PH SS	4
23	36204	COUPLING, FOOT VALVE PP	1
24	10123	STRAINER, FOOT VALVE PP	1
29	38028	VALVE ASM, INJ 1/4' NPT,PVC	1
31	38021	VALVE ASM, SUC 1/4' NPT,PVC POLYPREL	1
33	38034	VALVE ASM, FOOT 1/4' NPT,PVC/POLYPREL .375	1
34	37340	SEAT, PTFE	1
37	36260	CAP ASM, RELIEF	1
39	38065	VALVE BODY,3FV 1/4 NPT PVC	1
40	25628	NUT, 6-32 HEX SS	4
41	35716	SCREW, 6-32 X 1.19 PH SS	4
42	25631	NUT, RELIEF TUBING	1



4-FUNCTION VALVE (4FV)



3-FUNCTION VALVE (3FV)



4-FUNCTION BLEED VALVE (B-4FV)

[Return to selection page](#)