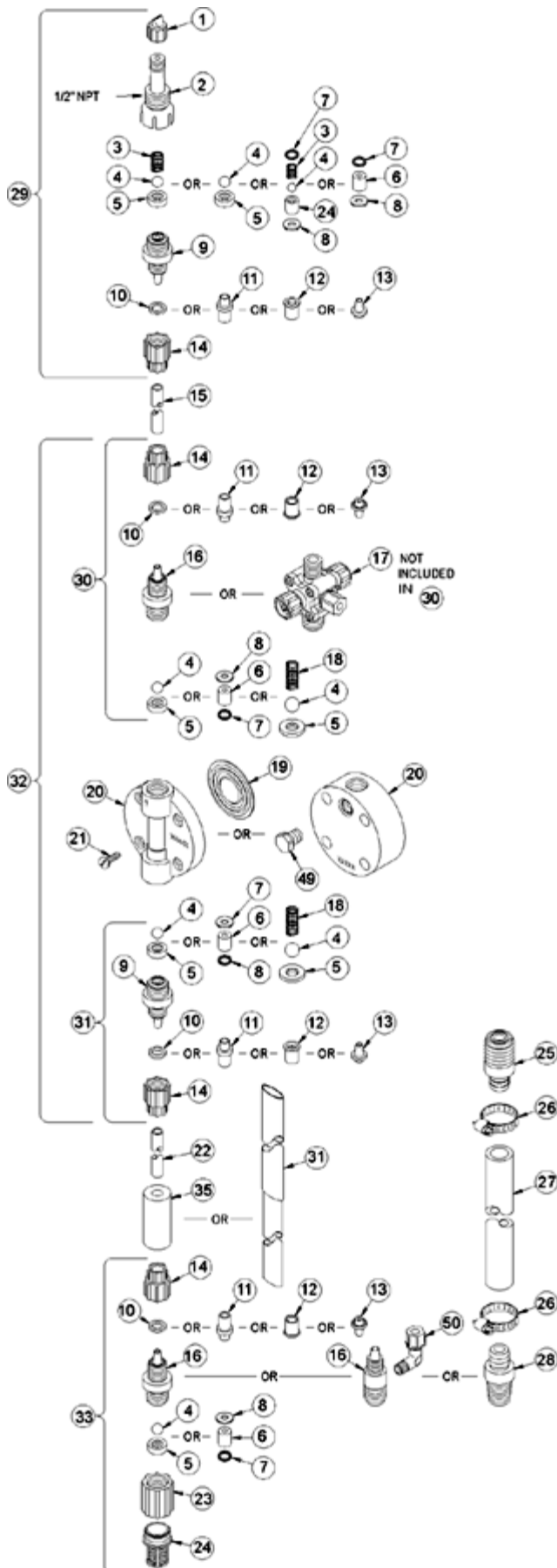
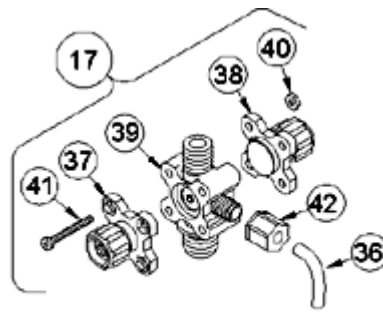


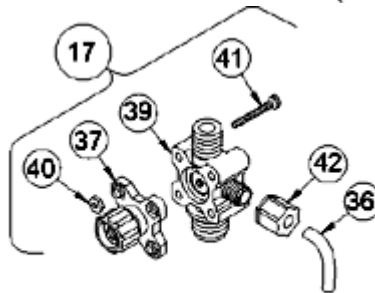
LE-352TM



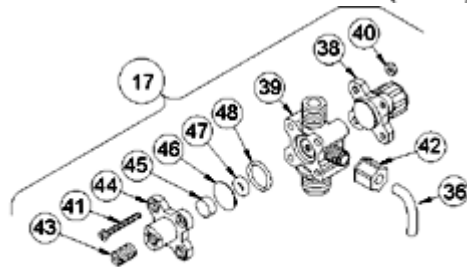
Key #	Part #	Description	Qty
1	27352	FLAPPER VALVE ,SANTOPRENE	1
2	37351	FITTING, LIQUIPRO, PVDF	1
3	37341	SPRING, COMPRESSION	1
4	10338	BALL, .375 CERAMIC	1
6	36304	CARTRIDGE ASM, .281,PVDF/POLYPREL	4
7	36103	O-RING,POLYPREL	4
8	36107	WASHER, CARTRIDGE VALVE	4
11	30877	FERRULE, TUBING,3X6mm/4X6mm	4
14	30860	COUPLING NUT, METRIC	4
15	25636-16	TUBING, .250 X .062 PE	1
16	37113	FITTING,1/4 TUBING PVDF	3
17	36625	VALVE ASM, 3FV 3X6mm,PVDF	1
19	30916	LIQUIFRAM, 0.5,FLUORFILM	1
20	36119	HEAD, MOLDED 0.5 PVDF	1
21	10340	SCREW, 10-24 X .75 PH SS	4
23	36204	COUPLING, FOOT VALVE PP	1
24	10123	STRAINER, FOOT VALVE PP	1
29	37362	VALVE ASM, INJ 4X6mm,PVDF	1
31	36620	VALVE ASM, SUC 3X6mm,PVDF POLYPREL	1
33	36608	VALVE ASM, FOOT 3X6mm,PVDF POLYPREL	1
34	37340	SEAT, PTFE	1
35	10322	WEIGHT, SUCTION TUBING	1
36	25636-10	TUBING, .250 X .062 PE	1
37	36260	CAP ASM, RELIEF	1
39	37221	VALVE BODY,3FV 1/4 PVDF	1
40	25628	NUT, 6-32 HEX SS	4
41	35716	SCREW, 6-32 X 1.19 PH SS	4
42	25631	NUT, RELIEF TUBING	1



4-FUNCTION VALVE (4FV)



3-FUNCTION VALVE (3FV)



4-FUNCTION BLEED VALVE (B-4FV)

[Return to selection page](#)