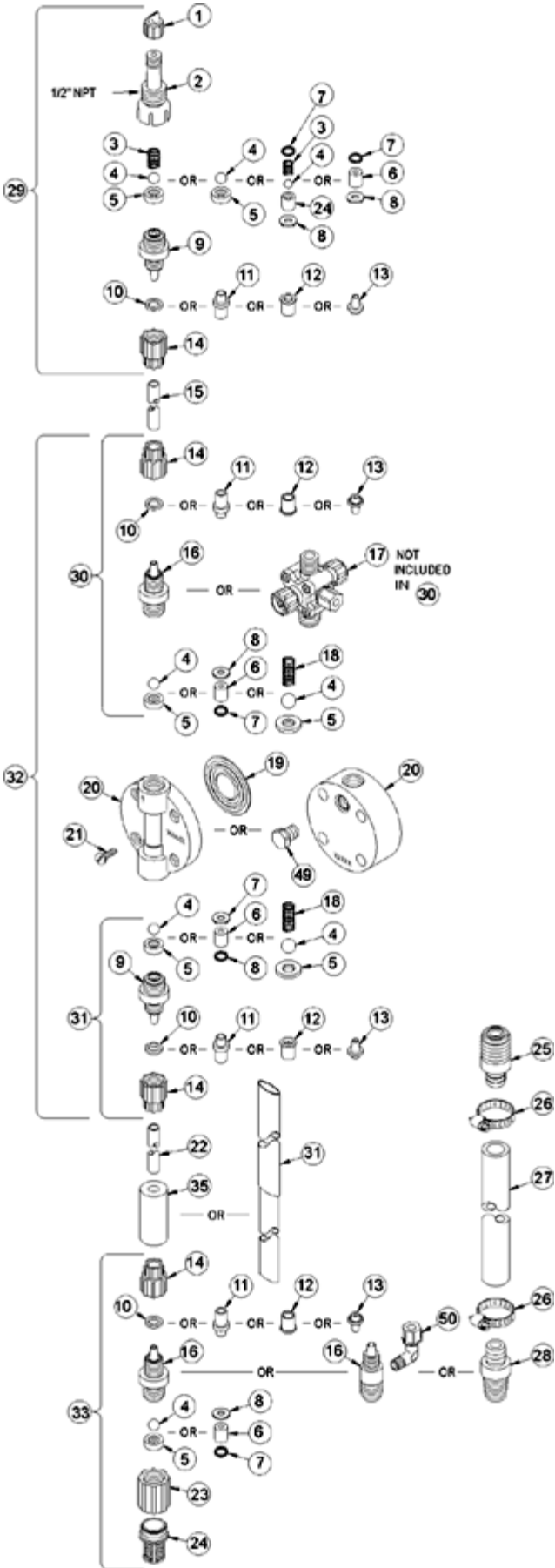
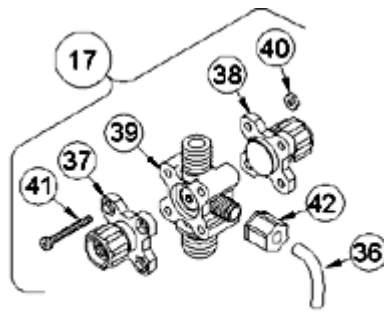


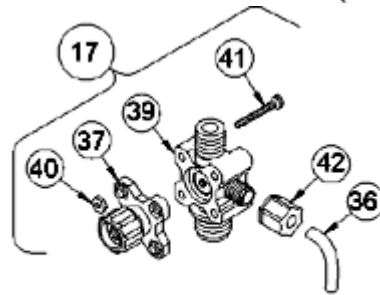
# LE-353SP



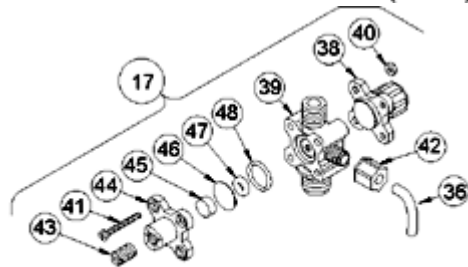
Key #	Part #	Description	Qty
1	27352	FLAPPER VALVE ,SANTOPRENE	1
2	37351	FITTING, LIQUIPRO, PVDF	1
3	37341	SPRING, COMPRESSION	1
4	10338	BALL, .375 CERAMIC	1
6	36303	CARTRIDGE ASM, .281,PVDF/TEFLON	4
7	36103	O-RING,POLYPREL	4
8	36107	WASHER, CARTRIDGE VALVE	4
15	25636-16	TUBING, .250 X .062 PE	1
16	37119	FITTING,1/4 NPT PVDF	3
17	36278	VALVE ASM, 4FV 1/4' NPT,PVDF	1
19	30916	LIQUIFRAM, 0.5,FLUORFILM	1
20	36119	HEAD, MOLDED 0.5 PVDF	1
21	10340	SCREW, 10-24 X .75 PH SS	4
23	36204	COUPLING, FOOT VALVE PP	1
24	10123	STRAINER, FOOT VALVE PP	1
29	37360	VALVE ASM, INJ 1/4' NPT,PVDF	1
31	36501	VALVE ASM, SUC 1/4' NPT,PVDF PTFE	1
33	36499	VALVE ASM, FOOT 1/4' NPT,PVDF PTFE	1
34	37340	SEAT, PTFE	1
36	25636-10	TUBING, .250 X .062 PE	1
37	36260	CAP ASM, RELIEF	1
38	36280	CAP ASM, A/S	1
39	36393	VALVE ASM, A/S BLEED,1/4' NPT PVDF	1
40	25628	NUT, 6-32 HEX SS	4
41	25627	SCREW, 6-32 X 1.25 PH SS	4
42	25631	NUT, RELIEF TUBING	1



4-FUNCTION VALVE (4FV)



3-FUNCTION VALVE (3FV)



4-FUNCTION BLEED VALVE (B-4FV)

[Return to selection page](#)