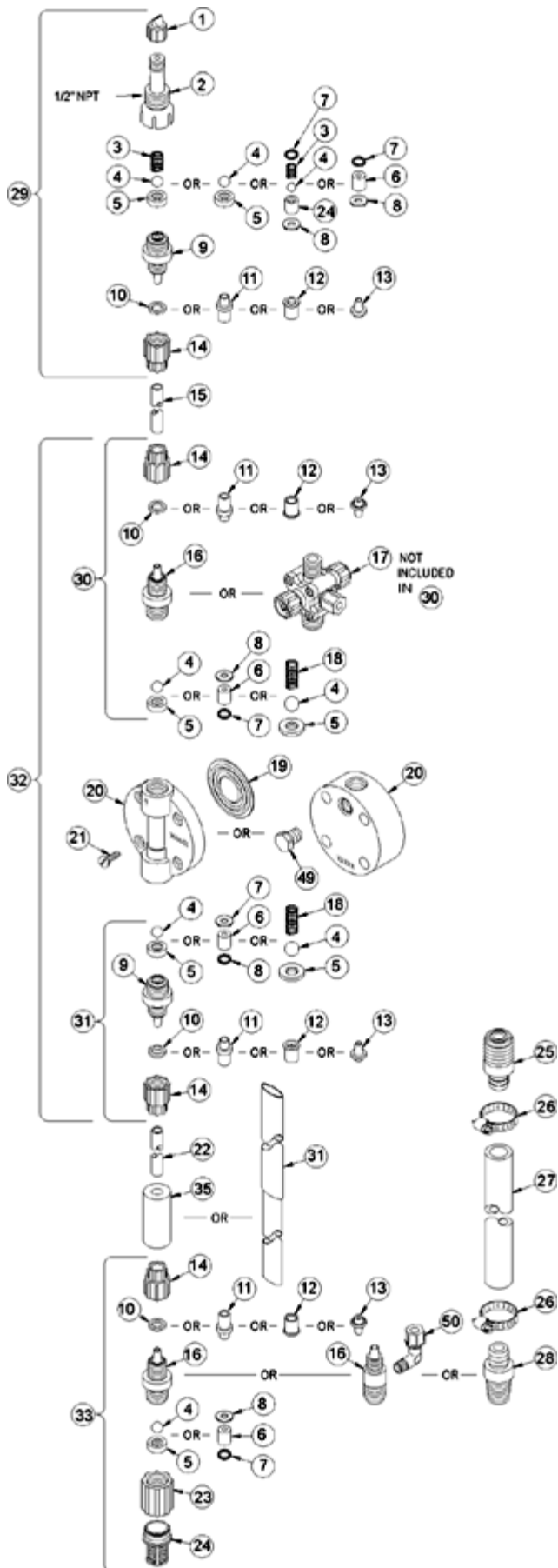
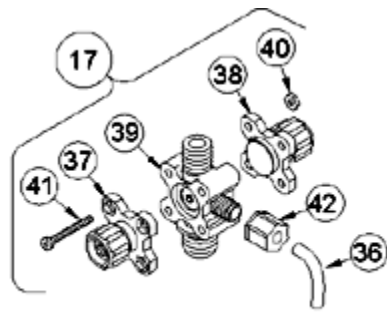


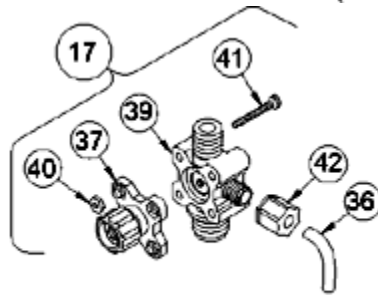
LE-393TM



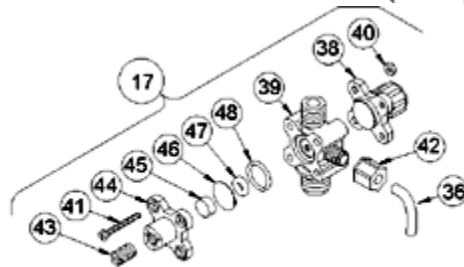
Key #	Part #	Description	Qty
1	27352	FLAPPER VALVE ,SANTOPRENE	1
2	37351	FITTING, LIQUIPRO, PVDF	1
3	37341	SPRING, COMPRESSION	1
4	10338	BALL, .375 CERAMIC	1
6	36306	CARTRIDGE ASM, .375 PVDF/TEFLON	3
7	36103	O-RING,POLYPREL	4
8	36107	WASHER, CARTRIDGE VALVE	4
12	34461	SLEEVE, METRIC 5X8mm/6X8mm	4
14	30860	COUPLING NUT, METRIC	4
16	37115	FITTING,3/8 TUBING PVDF	3
17	36627	VALVE ASM, 3FV 6X8mm PVDF	1
19	30917	LIQUIFRAM, 0.9 FLUOROFILM	0
20	38377	HEAD KIT 0.9 MOLDED PVDF W/WASHER	1
21	10340	SCREW, 10-24 X .75 PH SS	4
23	36204	COUPLING, FOOT VALVE PP	1
24	10123	STRAINER, FOOT VALVE PP	1
29	37364	VALVE ASM, INJ 6X8mm,PVDF	1
31	36622	VALVE ASM, SUC 6X8mm,PVDF TEFLON	1
33	36610	VALVE ASM, FOOT 6X8mm,PVDF TEFLON	1
34	37340	SEAT, PTFE	1
35	10322	WEIGHT, SUCTION TUBING	1
37	36260	CAP ASM, RELIEF	1
39	37227	VALVE BODY,4FV/BLEED 3/8 PVDF	1
40	25628	NUT, 6-32 HEX SS	4
41	35716	SCREW, 6-32 X 1.19 PH SS	4
42	25631	NUT, RELIEF TUBING	1



4-FUNCTION VALVE (4FV)



3-FUNCTION VALVE (3FV)



4-FUNCTION BLEED VALVE (B-4FV)

[Return to selection page](#)