

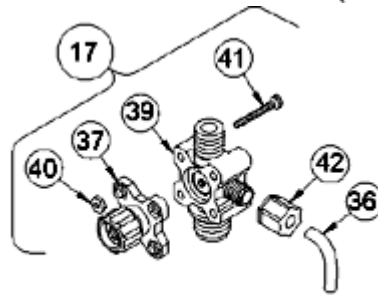
## LE-410TM



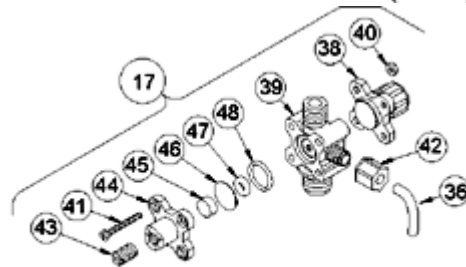
| Key # | Part #   | Description                       | Qty |
|-------|----------|-----------------------------------|-----|
| 1     | 27352    | FLAPPER VALVE ,SANTOPRENE         | 1   |
| 2     | 37351    | FITTING, LIQUIPRO, PVDF           | 1   |
| 3     | 37341    | SPRING, COMPRESSION               | 1   |
| 4     | 10338    | BALL, .375 CERAMIC                | 1   |
| 6     | 36307    | CARTRIDGE ASM, .375 PVDF/POLYPREL | 3   |
| 7     | 36103    | O-RING,POLYPREL                   | 4   |
| 8     | 36107    | WASHER, CARTRIDGE VALVE           | 4   |
| 10    | 37203    | CLAMP RING, 1/2'                  | 3   |
| 14    | 10411    | COUPLING NUT, PP 1/2              | 3   |
| 16    | 37769    | FITTING,1/2 TUBING PVC            | 3   |
| 17    | 38059    | VALVE ASM, 3FV 1/2' PVC           | 1   |
| 19    | 31419    | LIQUIFRAM, 3.0, FLUOROFILM        | 1   |
| 20    | 36159    | HEAD, MACHINED 3.0 ACRYLIC        | 1   |
| 21    | 10340    | SCREW, 10-24 X .75 PH SS          | 4   |
| 23    | 36204    | COUPLING, FOOT VALVE PP           | 1   |
| 24    | 10123    | STRAINER, FOOT VALVE PP           | 1   |
| 29    | 38027    | VALVE ASM, INJ 1/2' PVC           | 1   |
| 31    | 38020    | VALVE ASM, SUC 1/2' PVC,POLYPREL  | 1   |
| 34    | 37340    | SEAT, PTFE                        | 1   |
| 35    | 10322    | WEIGHT, SUCTION TUBING            | 1   |
| 36    | 25636-10 | TUBING, .250 X .062 PE            | 1   |
| 37    | 36260    | CAP ASM, RELIEF                   | 1   |
| 39    | 38061    | VALVE BODY,3FV 1/2 PVC            | 1   |
| 40    | 25628    | NUT, 6-32 HEX SS                  | 4   |
| 41    | 35716    | SCREW, 6-32 X 1.19 PH SS          | 4   |
| 42    | 25631    | NUT, RELIEF TUBING                | 1   |



4-FUNCTION VALVE (4FV)



3-FUNCTION VALVE (3FV)



4-FUNCTION BLEED VALVE (B-4FV)

[Return to selection page](#)