

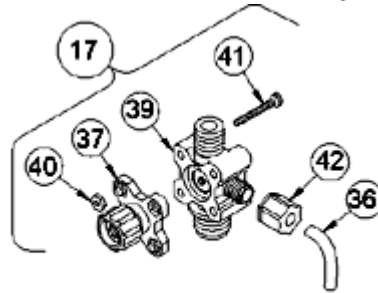
LE-418SU



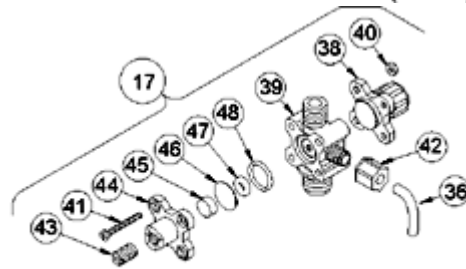
Key #	Part #	Description	Qty
1	27352	FLAPPER VALVE ,SANTOPRENE	1
2	37351	FITTING, LIQUIPRO, PVDF	1
3	37341	SPRING, COMPRESSION	1
4	10338	BALL, .375 CERAMIC	1
6	36307	CARTRIDGE ASM, .375 PVDF/POLYPREL	3
7	36103	O-RING,POLYPREL	4
8	36107	WASHER, CARTRIDGE VALVE	4
10	37203	CLAMP RING, 1/2'	3
14	10411	COUPLING NUT, PP 1/2	3
16	37769	FITTING,1/2 TUBING PVC	3
17	38012	VALVE ASM, 4FV 1/2' PVC	1
19	31419	LIQUIFRAM, 3.0, FLUOROFILM	1
20	37745	HEAD, 3.0 MACHINED PVC	1
21	10340	SCREW, 10-24 X .75 PH SS	4
23	36204	COUPLING, FOOT VALVE PP	1
24	10123	STRAINER, FOOT VALVE PP	1
29	37358	VALVE ASM, INJ 1/2' PVDF	1
31	38020	VALVE ASM, SUC 1/2' PVC,POLYPREL	1
34	37340	SEAT, PTFE	1
35	10322	WEIGHT, SUCTION TUBING	1
36	25636-10	TUBING, .250 X .062 PE	1
37	36260	CAP ASM, RELIEF	1
38	36280	CAP ASM, A/S	1
39	38016	VALVE BODY,4FV/BLEED 1/2 PVC	1
40	25628	NUT, 6-32 HEX SS	4
41	25627	SCREW, 6-32 X 1.25 PH SS	4
42	25631	NUT, RELIEF TUBING	1



4-FUNCTION VALVE (4FV)



3-FUNCTION VALVE (3FV)



4-FUNCTION BLEED VALVE (B-4FV)

[Return to selection page](#)