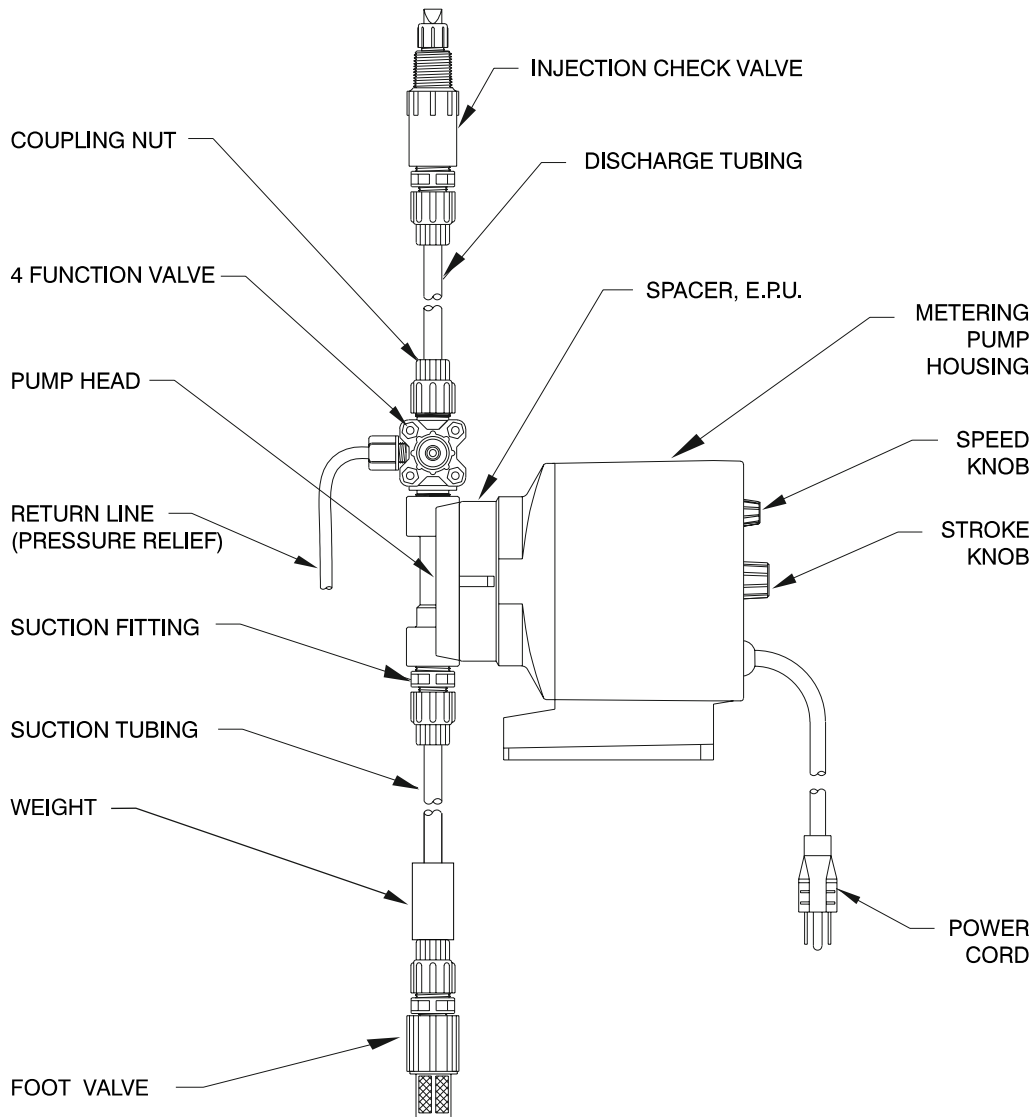


Instruction **Supplement**

Series P1

Electronic Metering Pump



Metering Pump Component Diagram



8 Post Office Square
Acton, MA 01720 USA
TEL: (978) 263-9800
FAX: (978) 264-9172
<http://www.lmipumps.com>

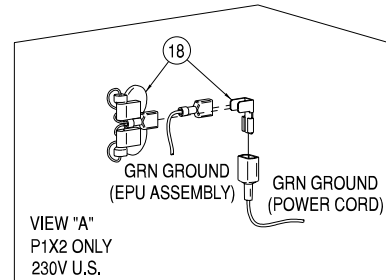
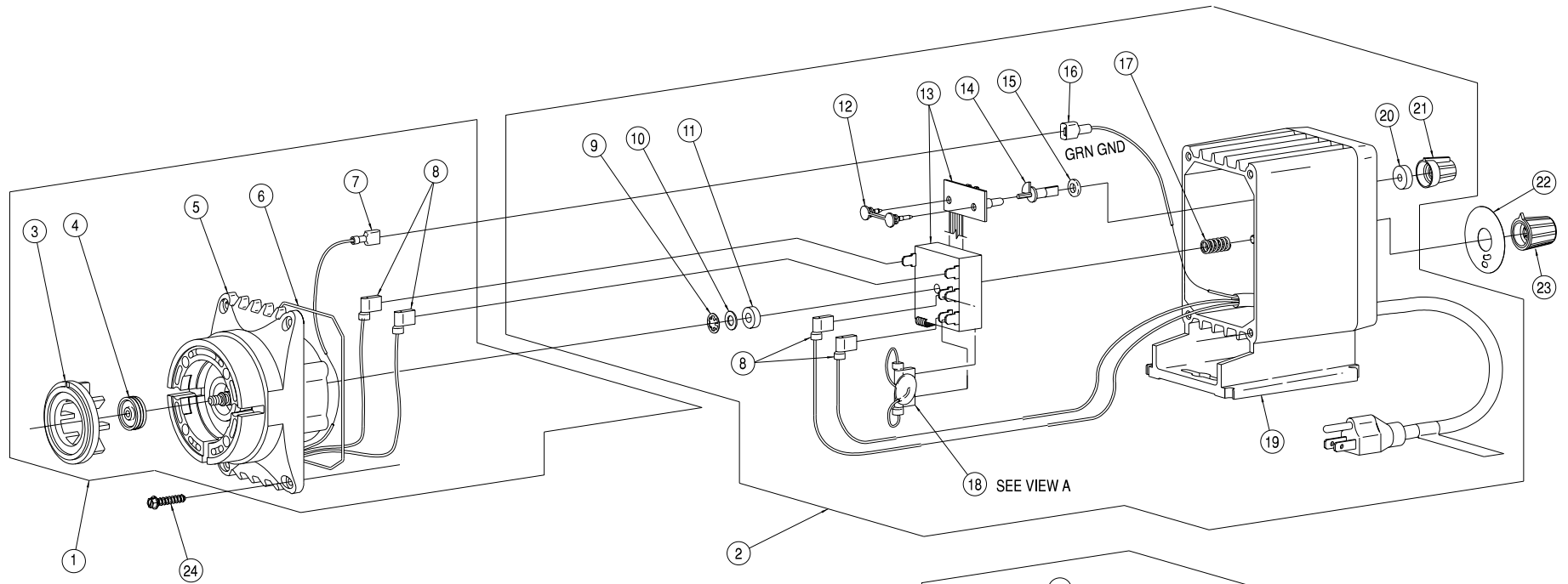


Replaces same of Rev. A 4/97
1842. B 2/00

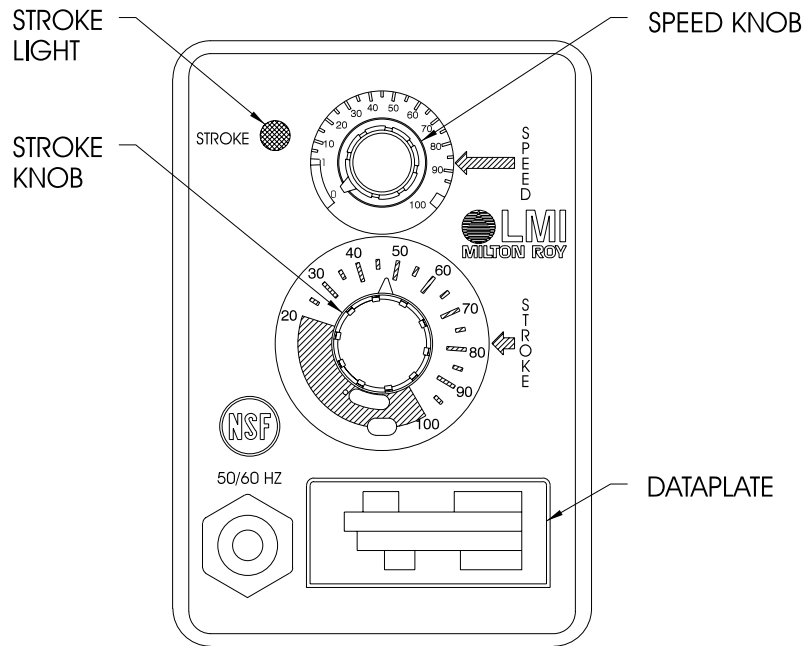
Series P1 Drive Assembly Parts List

| KEY NO | MODEL | PART NO | DESCRIPTION | QTY | Key No. | Model | PART No. | Description | Qty. |
|------------------|------------------|---------|---------------------------------------|-------|---------|--|------------------------------|----------------------------|-------------|
| 1 | P121 | 30107CE | EPU W/DISK 0.5 | 1 | 14 | P1 | 35743 | SPEED SHAFT | 1 |
| | P123, P125, P127 | 30108CE | EPU W/DISK 0.5 | 1 | 15 | P1 | 34497 | O-RING | 1 |
| | P131 | 30109CE | EPU W/DISK 0.9 | 1 | 16 | P1 | 35188 | WIRE TERMINAL (MALE) | 1 |
| | P133, P135, P137 | 30110CE | EPU W/DISK 0.9 | 1 | 17 | P1 | 25414 | SPRING | 1 |
| | P141 | 30240CE | EPU W/DISK 0.5 | 1 | 18 | P121, P131, P141, P151, P161 P123, P133, P143, P153, P163 P125, P135, P145, P155, P165 P127, P137, P147, P157, P167 | 35243 | MOV/CAP ASM, 115V | 1 |
| | P143, P145, P147 | 30241CE | EPU W/DISK 0.5 | 1 | | | 35237 | MOV/CAP ASM, 230V | 1 |
| | P151 | 30242CE | EPU W/DISK 0.9 | 1 | | | 35237 | MOV/CAP ASM, 230V | 1 |
| | P153, P155, P157 | 30243CE | EPU W/DISK 0.9 | 1 | | | 35237 | MOV/CAP ASM, 230V | 1 |
| | P161 | 33338CE | EPU W/DISK 1.8 | 1 | 19 | P121, P131, P141, P151, P161 P123, P133, P143, P153, P163 P125, P135, P145, P155, P165 P127, P137, P147, P157, P167 | 36797 | HOUSING ASSEMBLY, 115V | 1 |
| | P163, P165, P167 | 31781CE | EPU W/DISK 1.8 | 1 | | | 36798 | HOUSING ASSEMBLY, 230V DIN | 1 |
| 36799 | | | | | | | HOUSING ASSEMBLY, 240V UK | 1 | |
| | | | | 36800 | | | HOUSING ASSEMBLY, 230V SWISS | 1 | |
| 2 | P121, P131 | 36749 | HOUSING ASSEMBLY W/PULSER, 115V | 1 | 20 | P1 | 30803 | GASKET | 1 |
| | P123, P133 | 36750 | HOUSING ASSEMBLY W/PULSER, 230V DIN | 1 | 21 | P1 | 30709 | SPEED KNOB | 1 |
| | P125, P135 | 36751 | HOUSING ASSEMBLY W/PULSER, 240V UK | 1 | 22 | P12 P13 | 30418 | STROKE DIAL | 1 |
| | P127, P137 | 36752 | HOUSING ASSEMBLY W/PULSER, 230V SWISS | 1 | | | 31545 | STROKE DIAL | 1 |
| | P141, P151, P161 | 36734 | HOUSING ASSEMBLY W/PULSER, 115V | 1 | P16 | 31127 | STROKE DIAL | 1 | |
| | P143, P153, P163 | 36742 | HOUSING ASSEMBLY W/PULSER, 230V DIN | 1 | | 23 | P1 | 30295 | STROKE KNOB |
| | P145, P155, P165 | 36743 | HOUSING ASSEMBLY W/PULSER, 240V UK | 1 | 24 | P1 | 30306 | SCREW | 4 |
| | P147, P157, P167 | 36744 | HOUSING ASSEMBLY W/PULSER, 230V SWISS | 1 | | | | | |
| 3 | P12, P14 | 29445 | DISK, 0.5 | 1 | | | | | |
| | P13, P15 | 29437 | DISK, 0.9 | 1 | | | | | |
| | P16 | 29442 | DISK, 1.8 | 1 | | | | | |
| 4 | P1 | 10973 | SEAL | 1 | | | | | |
| 5 | P121, P131 | 30530CE | EPU | 1 | | | | | |
| | P123, P125, P127 | 30531CE | EPU | 1 | | | | | |
| | P133, P135, P137 | 30531CE | EPU | 1 | | | | | |
| | P141, P151 | 30154CE | EPU | 1 | | | | | |
| | P143, P145, P147 | 30155CE | EPU | 1 | | | | | |
| | P153, P155, P157 | 30155CE | EPU | 1 | | | | | |
| | P161 | 31862CE | EPU | 1 | | | | | |
| P163, P165, P167 | 31131CE | EPU | 1 | | | | | | |
| 6 | P1 | 10166 | O-RING | 1 | | | | | |
| 7 | P1 | 35189 | WIRE TERMINAL (FEMALE) | 1 | | | | | |
| 8 | P1 | 35190 | WIRE TERMINAL (FLAG) | 4 | | | | | |
| 9 | P1 | 10422 | RETAINING RING | 1 | | | | | |
| 10 | P1 | 25963 | WASHER, NYLON | 1 | | | | | |
| 11 | P1 | 30391 | WASHER, RUBBER | 1 | | | | | |
| 12 | P1 | 35744 | DUAL PIN | 1 | | | | | |
| 13 | P1 | 36255 | PULSER | 1 | | | | | |

Series P1 Drive Assembly Exploded View Diagram



Series P1 Control Panel Detail



Series P1 Wiring Diagram

