

HTP-C-SS

Magnetically Driven

Single-stage Regenerative Turbine

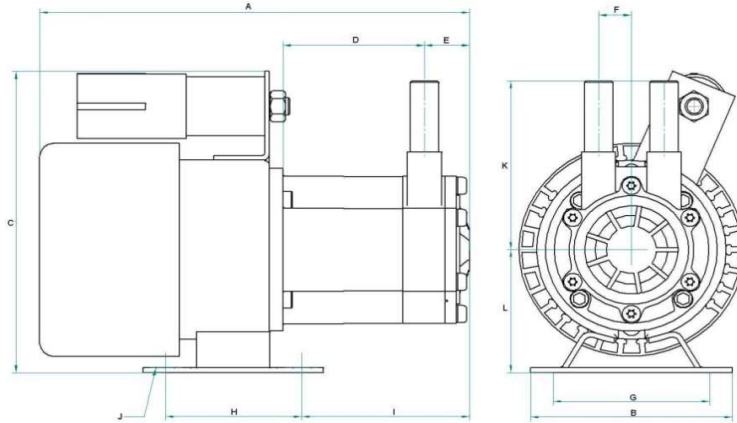
* Not to scale.
Specifications are subject to change.
Dimensions may change depending on motor specified

Wetted materials

Pump housing	316 SS
Impeller	Ryton
Spindle	316 SS
Thrust Washer	Ceramic
O Ring	Viton

Limitations

Max. temp	212°F
Max. pressure	300 psi



Dimensions

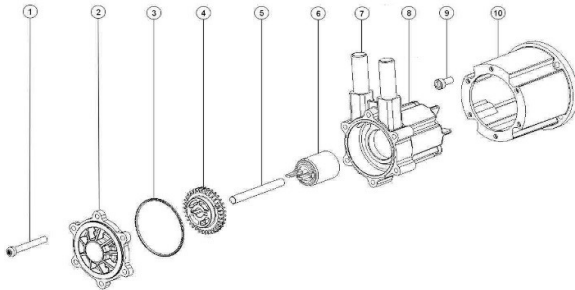
all dimensions in inches	A	B	C	D	E	F	G	H	I	J	K	L	Inlet	Outlet
50/60 Hz 230V	8.22	3.50	5.51	2.67	0.78	0.57	2.65	2.37	2.91	0.43	3.11	2.20	1/2"	1/2"

Motor Data

	Code	Frame	Mounting	IP	Phase	rpm	50 Hz Kw	50 Hz Amps	60 Hz rpm	60 Hz HP	60 Hz Amps	Approvals	Total Lbs
50/60 Hz 230V	AFIH6457			44	1	2900	0.09	0.75	3400	0.125	0.75	CE UL CSA*	4.6

*Manufacturer's UL Number - E46412 and CSA Number - CSA154595

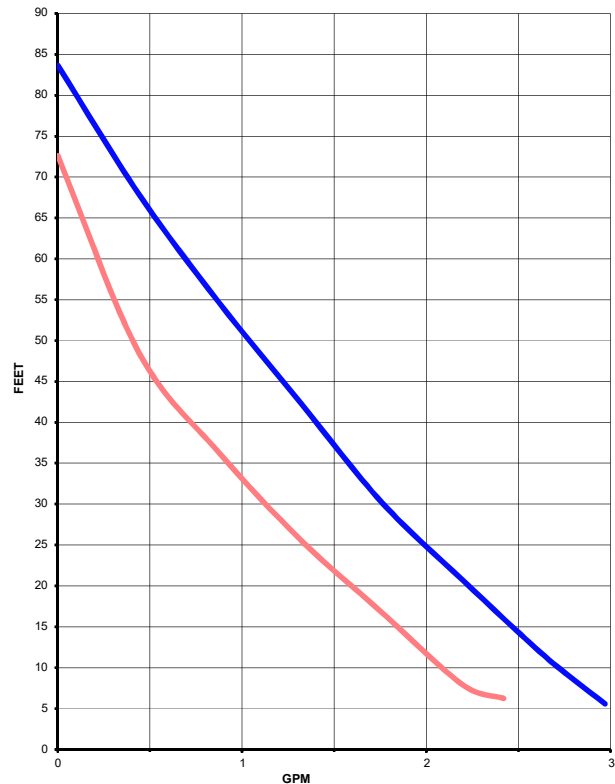
Parts List



Item	Description	Qty	Code
1	HOUSING SCREW ST/ST	6	5022-2101-50
2	FRONT COVER 316 SS	1	5025-110-51
3	O RING VITON	1	5002-120-31
4	TURBINE PPS	1	5025-130-14
5	SPINDLE ST/ST	1	5025-100-51
6	IMPELLER MAGNET	1	5025-191-08
7	PUMP HOUSING 316 SS	1	5025-140-51
8	DRIVE MAGNET	1	5025-203-00
9	SOCKET CAP SCREW ST/ST	1	5090-512-50CAP
10	MOTOR BRACKET	1	5025-170-01

Performance

Tests obtained with water 1.0 SG



50 Hz 60 Hz

MARCH PUMPS: 1819 PICKWICK AVE. GLENVIEW, IL 60026-1306, U.S.A.
PHONE: (847) 729-5300 FAX: (847) 729-7062 WWW.MARCHPUMP.COM