



MARCH PUMPS

1819 PICKWICK AVE., GLENVIEW, IL 60026-1306, U.S.A
 PHONE: (847) 729-5300 - FAX: (847) 729-7062
 WWW.MARCHPUMP.COM

DESCRIPTION: Series 8 are centrifugal magnetic drive pumps, eliminating the need for a shaft seal. Pumps are serviceable with an adjustable wrench. Screws should be tightened in sequence & uniformly. Do not over tighten the screws or you may crush the plastic housing bosses. See the parts list for a breakdown of parts.

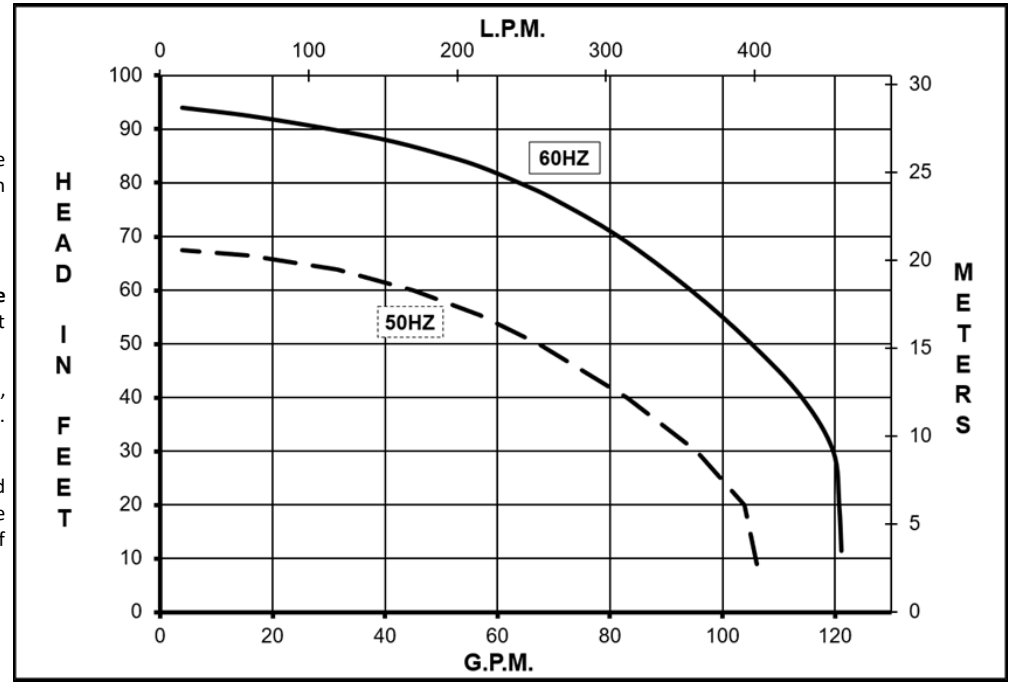
MODEL ABBREVIATIONS : C: Polypropylene, K: Kynar

OPERATION: Pumps are not self-priming, lack a suction lift, and thus require a **flooded suction**. Pumps **cannot be run dry** because the impeller requires the liquid being pumped for lubrication. For application assistance, contact March Pump.

ELECTRICAL: TE-8-MD pumps are dual voltage 230/460, 3 phase 60 Hz and dual voltage 190/380, 3 phase 50 Hz, TEFC. Motors are totally enclosed fan cooled and are U.L. listed as well as rated for continuous operation. All motors have a conduit box for electrical connections.

ASSEMBLY & DISASSEMBLY: When replacing impeller bushings in the field, the plastic bushings must be bored to size after they have been pressed into the impeller. Bore to 0.630/0.632 I.D. The carbon & ceramic bushings are to finished size and do not require boring. When attaching the drive magnet to the motor shaft, position the face of the drive magnet 3/8 inch below the face of the motor bracket

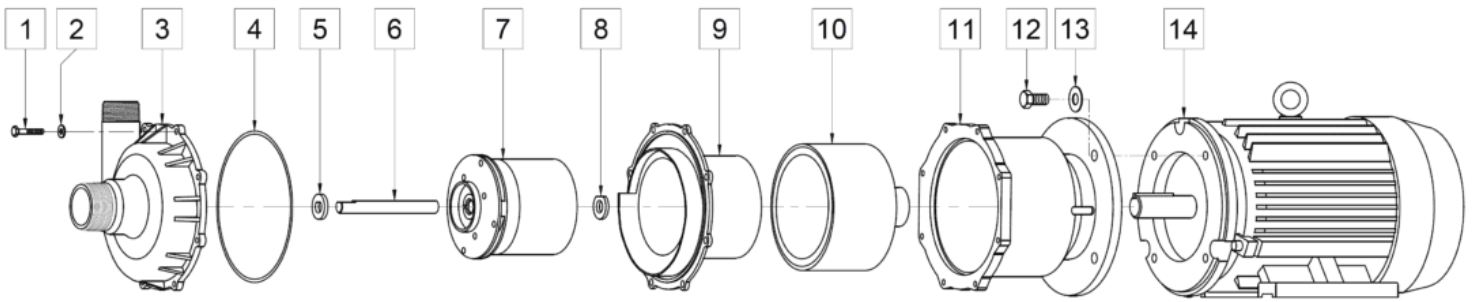
TE-8C-MD,TE-8K-MD



| Specifications | | TE-8C-MD | TE-8K-MD |
|------------------------|---------|-----------------|-----------------|
| Product | 3Ph 3HP | 0157-0008-0100 | 0157-0008-0200 |
| | 3Ph 5HP | 0157-0008-0700 | 0157-0008-0800 |
| Inlet-Outlet | | 2" MPT-1.5" MPT | 2" MPT-1.5" MPT |
| Max Internal Pressure | | 50PSI (344 kPa) | 75PSI (517 kPa) |
| Max Liquid Temperature | | 190F (87C) | 200F (93C) |

| Model | 60Hz | | | | | | | | | | | | 50Hz | | | | | | | | | | | | Packed Weight Pounds |
|----------|----------|-----|----------|------|----|------------|---------|----------|----|-----|------|-----|----------|------|----------|----|----|------------|------|----|-----|------|-----|--|-------------------------|
| | Max Flow | | Max Head | | | Electrical | | | | | | | Max Flow | | Max Head | | | Electrical | | | | | | | |
| | GPM | LPM | FT | PSI | M | Ph | V | A | HP | kW | RPM | GPM | LPM | Feet | PSI | M | Ph | V | A | HP | kW | RPM | | | |
| TE-8C-MD | 120 | 454 | 95 | 41.2 | 29 | 3 | 230/460 | 7.8/3.9 | 3 | 2.2 | 3450 | 105 | 400 | 65.6 | 28.4 | 20 | 3 | 380 | 4.3 | 3 | 2.2 | 2850 | 142 | | |
| TE-8C-MD | 120 | 454 | 95 | 41.2 | 29 | 3 | 230/460 | 11.8/5.9 | 5 | 3.7 | 3450 | 105 | 400 | 65.6 | 28.4 | 20 | 3 | 380 | 7.14 | 5 | 3.7 | 2850 | 142 | | |
| TE-8K-MD | 120 | 454 | 95 | 41.2 | 29 | 3 | 230/460 | 7.8/3.9 | 3 | 2.2 | 3450 | 105 | 400 | 65.6 | 28.4 | 20 | 3 | 380 | 4.3 | 3 | 2.2 | 2850 | 143 | | |
| TE-8K-MD | 120 | 454 | 95 | 41.2 | 29 | 3 | 230/460 | 11.8/5.9 | 5 | 3.7 | 3450 | 105 | 400 | 65.6 | 28.4 | 20 | 3 | 380 | 7.14 | 5 | 3.7 | 2850 | 143 | | |

All specifications & data are based on pumping water & are intended as a guideline only. Specifications may vary with different motors.



| TE-8C-MD | | | | TE-8K-MD | | | |
|----------|----------------|---------|---|----------|----------------|---------|--|
| Item | Part Number | QTY REQ | Description | Item | Part Number | QTY REQ | Description |
| 1 | 0157-0014-1000 | 8 | 1/4"-20 x 1" LG. Screw (Stainless) | 1 | 0157-0014-1000 | 8 | 1/4"-20 x 1" LG. Screw (Stainless) |
| 2 | 0157-0023-1000 | 8 | 1/4" ID x 5/8" OD Washer (Stainless) | 2 | 0157-0023-1000 | 8 | 1/4" ID x 5/8" OD Washer (Stainless) |
| 3 | 0157-0007-1000 | 1 | Pump Housing, 2"MPT x 1.5"MPT (Polypropylene) | 3 | 0157-0052-1000 | 1 | Pump Housing, 2"MPT x 1.5"MPT (Glass Filled Kynar) |
| 4 | 0157-0011-1000 | 1 | 0.157" CS x 7.244" ID "O" Ring (Viton) | 4 | 0157-0011-1000 | 1 | 0.157" CS x 7.244" ID "O" Ring (Viton) |
| 5 | 0157-0001-1000 | 1 | Front Thrust Washer (Ceramic) | 5 | 0157-0001-1000 | 1 | Front Thrust Washer (Ceramic) |
| 6 | 0157-0002-1000 | 1 | Shaft (Ceramic) | 6 | 0157-0002-1000 | 1 | Shaft (Ceramic) |
| 7 | 0157-0004-0200 | 1 | Impeller with Ryton/Teflon/Carbon Bushing (Polypropylene) | 7 | 0157-0050-0500 | 1 | Impeller with Carbon Bushing (Glass Filled Kynar) |
| 8 | 0157-0009-1000 | 1 | Rear Thrust Washer (Ceramic) | 8 | 0157-0009-1000 | 1 | Rear Thrust Washer (Ceramic) |
| 9 | 0157-0006-1000 | 1 | Rear Housing (Carbon Filled Polypropylene) | 9 | 0157-0053-1000 | 1 | Rear Housing (Glass Filled Kynar) |
| 10 | 0157-0005-0100 | 1 | Drive Magnet | 10 | 0157-0005-0100 | 1 | Drive Magnet |
| 11 | 0157-0008-0010 | 1 | Motor Bracket (Metal) | 11 | 0157-0008-0010 | 1 | Motor Bracket (Metal) |
| 12 | 0160-0031-1000 | 4 | 1/2"-13 x 1" Lg. Screw (Stainless) | 12 | 0160-0031-1000 | 4 | 1/2"-13 x 1" Lg. Screw (Stainless) |
| 13 | 0160-0032-1000 | 4 | 1/2"ID x 1-1-1/4"OD Washer (Stainless) | 13 | 0160-0032-1000 | 4 | 1/2"ID x 1-1-1/4"OD Washer (Stainless) |
| 14A | 0157-0012-1000 | 1 | TEFC Motor, 3HP, 230/460V, 3 Phase, 50/60Hz | 14A | 0157-0012-1000 | 1 | TEFC Motor, 3HP, 230/460V, 3 Phase, 50/60Hz |
| 14B | 0157-0065-1000 | 1 | TEFC Motor, 5HP, 230/460V, 3 Phase, 50/60Hz | 14B | 0157-0065-1000 | 1 | TEFC Motor, 5HP, 230/460V, 3 Phase, 50/60Hz |
| W | 0157-0085-0100 | 1 | Wet End Kit: (Items 1,2,3,4,5,6,7,8,9) | W | 0157-0086-0100 | 1 | Wet End Kit: (Items 1,2,3,4,5,6,7,8,9) |

NOTE: Contact Factory for other materials and/or parts not listed.

Special voltage motors are available upon special order.

Materials in contact with the liquid: TE-8C-MD: Polypropylene, Carbon Filled Polypropylene, Ryton/Teflon/Carbon, Ceramic, Viton

TE-8K-MD: Glass Filled Kynar, Carbon, Ceramic, Viton

LIMITED WARRANTY: March pumps are guaranteed only against defects in workmanship or materials for a period of one year from date of manufacture pumping water. For the complete warranty and to register online go to www.marchpump.com/warranty-registration

0157-0021-1000-R-Rev24

Order Online: www.PumpCatalog.com

0135-0107-1000-B-Rev26