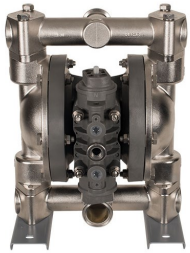
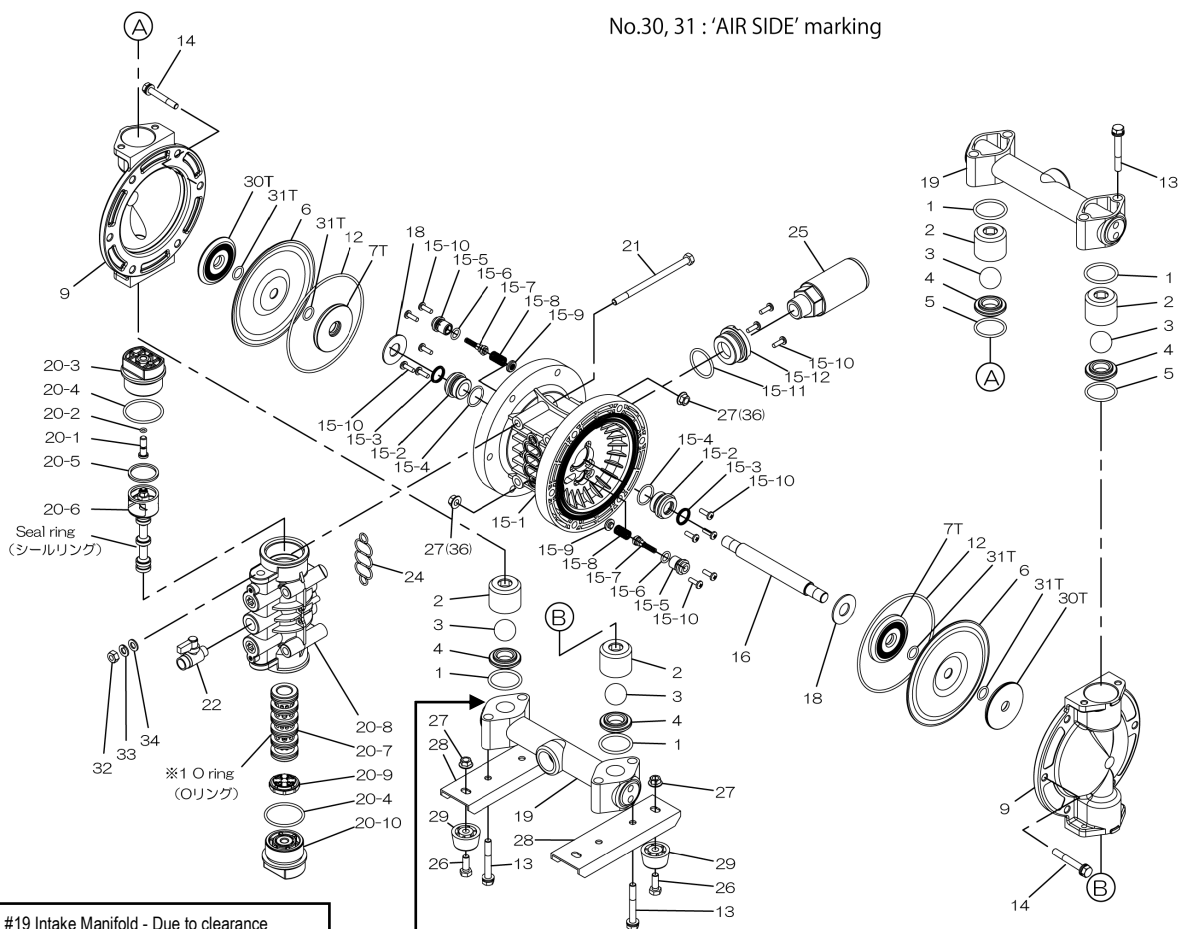


Air Operated Double Diaphragm Pump



Note: starting serial # 487505

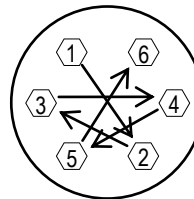
Trial Program



* NOTE: #19 Intake Manifold - Due to clearance concerns with the air valve, you must turn the intake manifold so it faces the same direction as the discharge manifold for the NDP-20 series FDA pumps.

Air Operated Double Diaphragm Pump

REF. NO.	PARTS No.	DESCRIPTION	QTY.	Reorder
1	643036	O-RING	4	
2	711701-EP	BALL GUIDE	4	
3	770736	BALL	4	
4	590086-EP	VALVE SEAT	4	
5	771131	O-RING	2	
6	771083	DIAPHRAGM	2	
7T	709456	CENTER DISK	2	
9	711693-EP	OUT CHAMBER	2	
12	640151	O-RING	2	
13	621159	BOLT	8	
13a	631936	WAVE WASHER	8	
14	621156	BOLT	12	
14a	631937	WAVE WASHER	12	
15	804603	BODY ASSEMBLY	1	
15-1	772928	BODY	1	
15-2	772931	THROAT BEARING	2	
15-3	685414	PACKING	2	
15-4	685276	O-RING	2	
15-5	772932	VALVE SEAT	2	
15-6	640009	O-RING	2	
15-7	802360	PILOT VALVE ASSEMBLY	2	
15-8	708666	SPRING	2	
15-9	772948	SPRING SEAT	2	
15-10	686030	TAPPING SCREW	13	
15-11	640132	O-RING	1	
15-12	772933	BUSHING	1	
16	710252	CENTER ROD	1	
18	771054	CUSHION	2	
19	831270-TC-EP	MANIFOLD	2	
20	804608	VALVE BODY ASSEMBLY	1	
20-1	772991	REST BUTTON	1	
20-2	640002	O-RING	1	
20-3	772946	CAP A	1	
20-4	640043	O-RING	2	
20-5	771241	PACKING	1	
20-6	802400	C SPOOL VALVE ASSY.	1	
20-6 seal	771053	SEAL RING	5	
20-7	804609	SLEEVE ASSEMBLY	1	
20-7-*1	686029	O-RING	6	
20-8	832903	VALVE BODY ASSEMBLY	1	
20-9	771914	CUSHION	1	
20-10	772947	CAP B	1	
21	686031	BOLT	4	
22	686019	BALL VALVE	1	
24	772848	GASKET	1	
25	804697	SILENCER	1	
26	611148	BOLT	4	
27	682276	NUT WITH FLANGE	16	
28	709157-XP	PUMP BASE	2	
29	770551	CUSHION	4	
30T	709326-EP	CENTER DISCK	2	
31T	643013	O-RING	4	
KIT	K20-MT-1	LIQUID SIDE		
KIT	K225-AP	AIR MOTOR		



Tightening torque for center rod and out chambers.
Center Rod 29 ft-lbf {40 N-m}
Out Chambers 10 ft-lbf {13 N-m}

Tightening torque for manifold retainer bolts.
BST-FDA 15 ft-lbf {20 N-m}

General Tools:

- Socket wrenches - 10mm, 12mm, 13mm, 17mm, 22mm
- Hexagonal box wrench - 5mm
- Open-end wrenches - 22mm

Miscellaneous:

- Assembly Oil - turbine oil none additional class 1 (equivalent to ISA VGA32 grade)
- Nuts - M14 x 1.5
- Urea grease grade (NLGI) No. 2
- Lubricants equivalent to Loctite Anti-Seize 767)

Customer Notes

Model #: _____
 Description: _____
 Serial #: _____
 Date Installed: _____
 Department Location: _____
 Tag/Project: _____