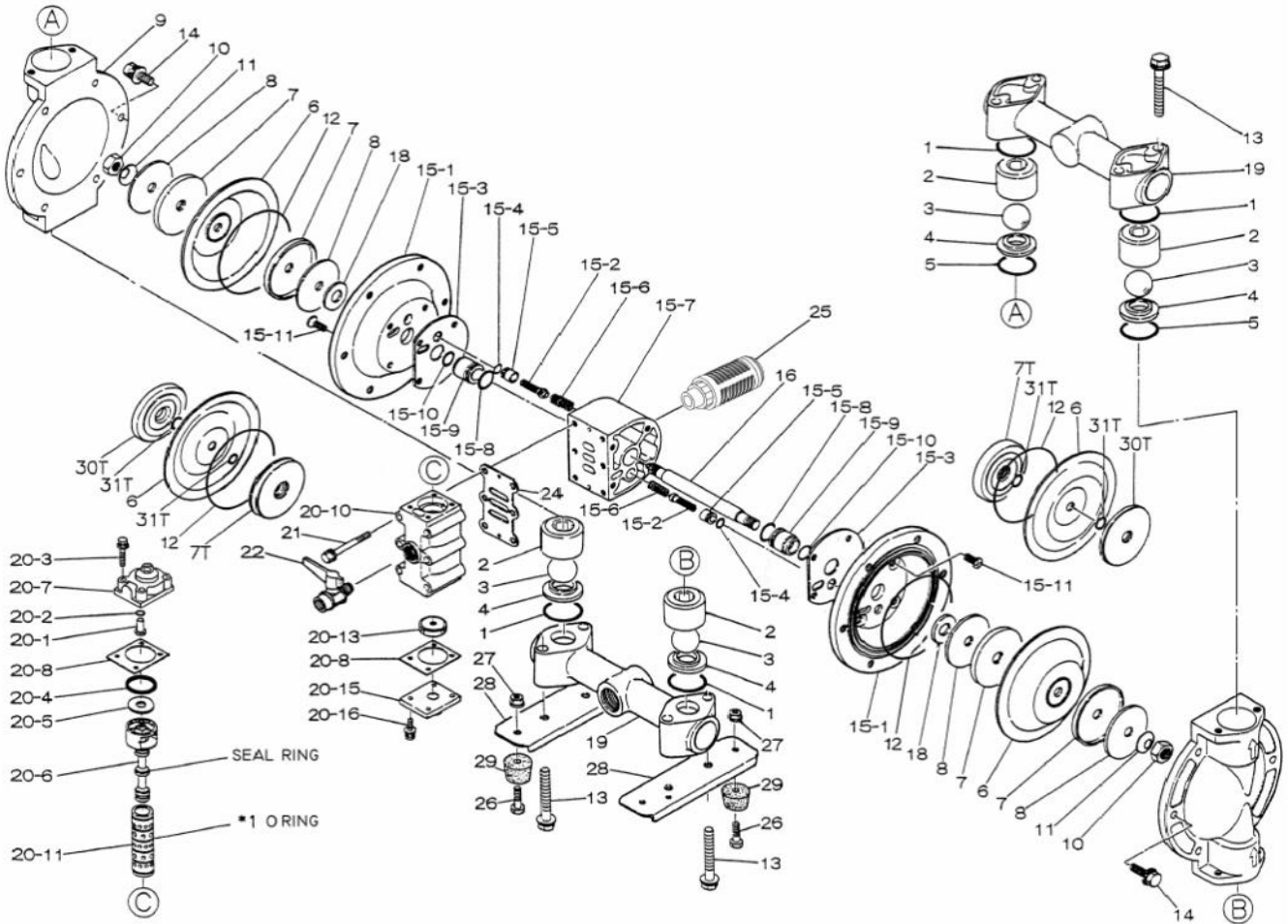


EXPLODED VIEW & PARTS LISTING

Air Operated Double Diaphragm Pump

Model: NDP-25BAT-UL

Part # 851531-UL



Air Operated Double Diaphragm Pump



Reference			
No.	Description	Q'ty	Part No.
1	O-ring	4	643044
2	Valve Stopper	4	711702
3	Ball	4	770691
4	Valve Seat	4	590087
5	O-ring	2	771130
6	Diaphragm	2	771110
7	N/A	-	-
7T	Center Disk	2	709459
8	N/A	-	-
9	Out Chamber	2	711687
10	Nut	2	682263
11	Coned Disk Spring	2	682730
12	O-ring	2	640154
13	Bolt	8	611185
13 washer	Wave Washer	8	681917
14	Bolt	12	621185
14 washer	Wave Washer	12	631917
15	Body Assembly	1	804665
16	Center Rod	1	709162
18	Cushion	2	771054
19	Manifold	2	831281
20	Valve Body Assembly	1	802362
21	Bolt	6	682265
22	Ball Valve	1	684320
24	Gasket	1	771056
25	Silencer	1	804697
26	Bolt	4	611148
27	Nut with Flange	4	682276
28	Pump Base	2	709156
29	Cushion	4	770551
30T	Center Disk	2	709327
31T	O-Ring	4	643013

Body Assembly - 803247

Reference			
No.	Description	Q'ty	Part No.
15-1	Air Chamber	2	715937
15-2	Pilot Valve Assy.	2	802360
15-3	Gasket	2	771057
15-4	O-ring	2	640009
15-5	Valve Seat	2	771945
15-6	Spring	2	708666
15-7	Body	1	709812
15-8	O-ring	2	685276
15-9	Throat Bearing	2	772703
15-10	Packing	2	685414
15-11	Flat Head Bolt	8	682486

Repair Kits

K25-MT-UL Liquid Side Repair Kit

No.	Description	Q'ty	Part No.
1	O-ring	4	643044
3	Ball	4	770691
5	O-ring	2	771130
6	Diaphragm	2	771110
12	O-ring	2	640154
31	O-ring	4	643013

K225-AM Air Side Repair Kit

No.	Description	Q'ty	Part No.
18	Cushion	2	771054
24	Gasket	1	771056
15-2	Pilot Valve Assy.	2	802360
15-3	Gasket	2	771057
15-4	O-ring	2	640009
15-5	Valve Seat	2	771945
15-6	Spring	2	708666
15-8	O-ring	2	685276
15-9	Throat Bearing	2	772703
15-10	Packing	2	685414
20-2	O-ring	1	640005
20-4	Packing	1	771241
20-6-seal	Seal Ring	5	771053
20-8	Gasket	2	771240
20-11-*1	O-ring	6	771080
20-13	Cushion	1	771914

Air Valve Body Assembly - 802362

Reference			
No.	Description	Q'ty	Part No.
20-1	Reset Button	1	709161
20-2	O-ring	1	640005
20-3	Bolt	4	682704
20-4	Packing	1	771241
20-5	Plain Washer	1	715961
20-6	C Spool Valve Assy.	1	802400
20-6-seal	Seal Ring	5	771053
20-7	Cap	1	710221
20-8	Gasket	2	771240
20-10	Valve Body	1	711639
20-11	Sleeve Assembly	1	803931
20-11-*1	O-ring	6	771080
20-13	Cushion	1	771914
20-15	Cap	1	709305
20-16	Bolt	4	682262