

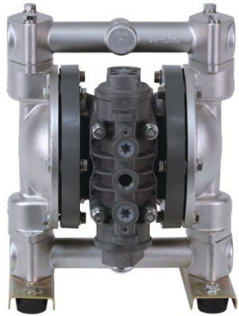
EXPLODED VIEW & PARTS LISTING

Air Operated Double Diaphragm Pump

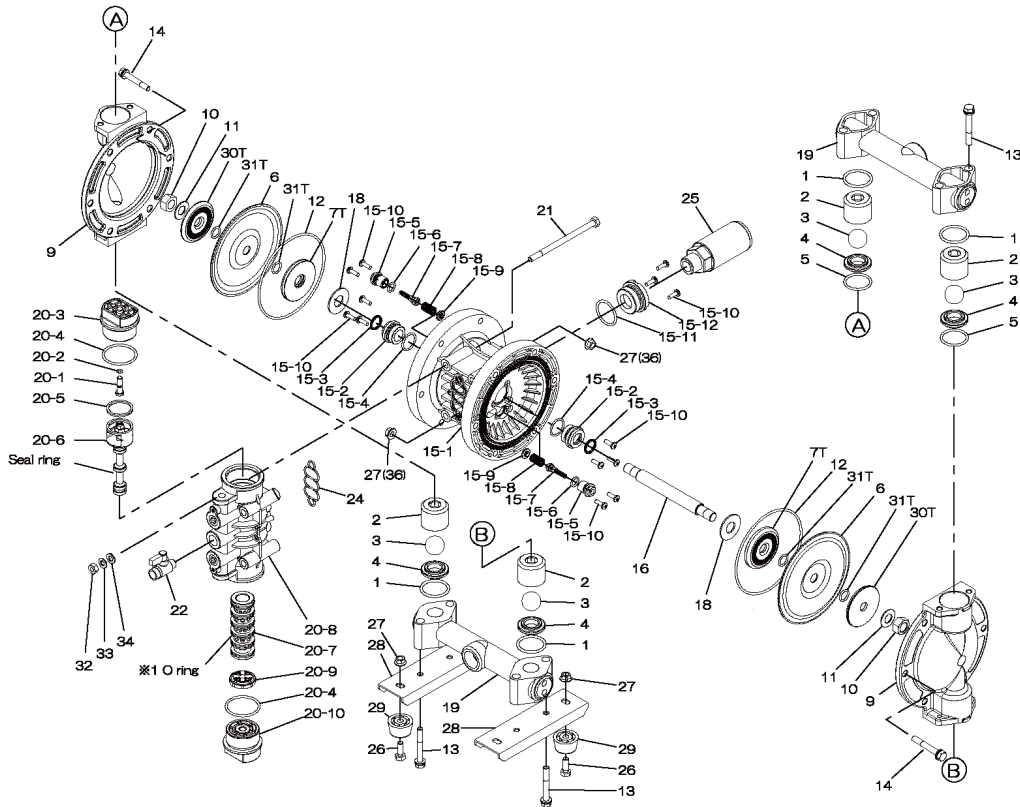
Model: NDP-25BST-PP

Model#: 854140

(PTFE fitted w/non-metallic center body)



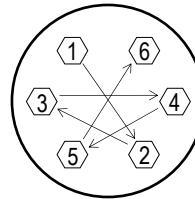
Trial Program



Air Operated Double Diaphragm Pump

(PTFE fitted w/non-metallic center body)

| REF. No. | PART No. | DESCRIPTION | QTY. | REORDER |
|-----------|---------------|---------------------------|----------|---------|
| 1 | 643044 | O-RING | 4 | |
| 2 | 711703 | BALL GUIDE | 4 | |
| 3 | 770691 | BALL | 4 | |
| 4 | 711707 | VALVE SEAT | 4 | |
| 5 | 771130 | O-RING | 2 | |
| 6 | 771110 | DIAPHRAGM | 2 | |
| 7T | 709459 | CENTER DISK (liquid side) | 2 | |
| 9 | 711694 | OUT CHAMBER | 2 | |
| 10 | 682263 | NUT | 2 | |
| 11 | 682730 | CONED DISC SPRING | 2 | |
| 12 | 640154 | O-RING | 2 | |
| 13 | 621185 | BOLT | 8 | |
| 13 | 631937 | WAVE WASHER | 8 | |
| 14 | 621177 | BOLT | 12 | |
| 14 | 631937 | WAVE WASHER | 12 | |
| 15 | 804604 | BODY ASSY. | 1 | |
| 15-1 | 772929 | BODY -PP | 1 | |
| 15-2 | 772931 | THROAT BEARING | 2 | |
| 15-3 | 685414 | V-PACKING | 2 | |
| 15-4 | 685276 | O-RING | 2 | |
| 15-5 | 772932 | VALVE SEAT | 2 | |
| 15-6 | 640009 | O-RING | 2 | |
| 15-7 | 802360 | PILOT VALVE ASSY. | 2 | |
| 15-8 | 708666 | SPRING | 2 | |
| 15-9 | 772948 | SPRING SEAT | 2 | |
| 15-10 | 686030 | TAPPING SCREW | 13 | |
| 15-11 | 640132 | O-RING | 1 | |
| 15-12 | 772933 | BUSHING | 1 | |
| 16 | 709162 | CENTER ROD | 1 | |
| 18 | 771054 | CUSHION | 2 | |
| 19 | 831271 | MANIFOLD | 2 | |
| 20 | 804608 | VALVE BODY ASSY. | 1 | |
| 20-1 | 772991 | RESET BUTTON | 1 | |
| 20-2 | 640002 | O-RING | 1 | |
| 20-3 | 772946 | CAP A | 1 | |
| 20-4 | 640043 | O-RING | 2 | |
| 20-5 | 771241 | PACKING | 1 | |
| 20-6 | 802400 | C-SPOOL ASSY. | 1 | |
| 20-6-seal | 771053 | SEAL RING | 5 | |
| 20-7 | 804609 | SLEEVE ASSY. | 1 | |
| 20-7-*1 | 686029 | O-RING | 6 | |
| 20-8 | 832902 | VALVE BODY ASSY. | 1 | |
| 20-9 | 771914 | CUSHION | 1 | |
| 20-10 | 772947 | CAP B | 1 | |
| 21 | 682265 | BOLT | 6 | |
| 22 | 684320 | BALL VALVE | 1 | |
| 24 | 771056 | GASKET | 1 | |
| 25 | 804697 | SILENCER | 1 | |
| 26 | 611148 | BOLT | 4 | |
| 27 | 682276 | NUT WITH FLANGE | 4 | |
| 28 | 709156 | PUMP BASE | 2 | |
| 29 | 770551 | CUSHION | 4 | |
| 30T | 709331 | CENTER DISK (air side) | 2 | |
| 31T | 643013 | O-RING | 4 | |
| KIT | K25-MT-1 | LIQUID SIDE KIT | | |
| KIT | K225-AP | AIR MOTOR KIT | | |



Tightening torque for center rod and out chambers.

Center Rod 29 ft-lbf {40 N-m}
 Out Chambers 15 ft-lbf {20 N-m}

Tightening torque for manifold retainer bolts.
 25BST-PP 25 ft-lbf {35 N-m}

General Tools:

- Socket wrench - 10mm, 12mm, 13mm, 17mm, 22mm
- Hexagonal box wrench - 5mm
- Open-end wrench - 12mm, 13mm, 22mm
- Adjustable angle wrenches
- Phillips head screw driver

Special Tools:

- Sleeve remover (713148) used to remove the sleeve.

Miscellaneous:

- Assembly Oil - turbine oil none additional class 1 (equivalent to ISO VG32 grade)
- Nuts - M14 x 1.5
- Urea grease grade (NLGI) No. 2

Customer Notes

Model #: _____
 Description: _____
 Serial #: _____
 Date Installed: _____
 Department Location: _____
 Tag/Project: _____