

EXPLODED VIEW & PARTS LISTING

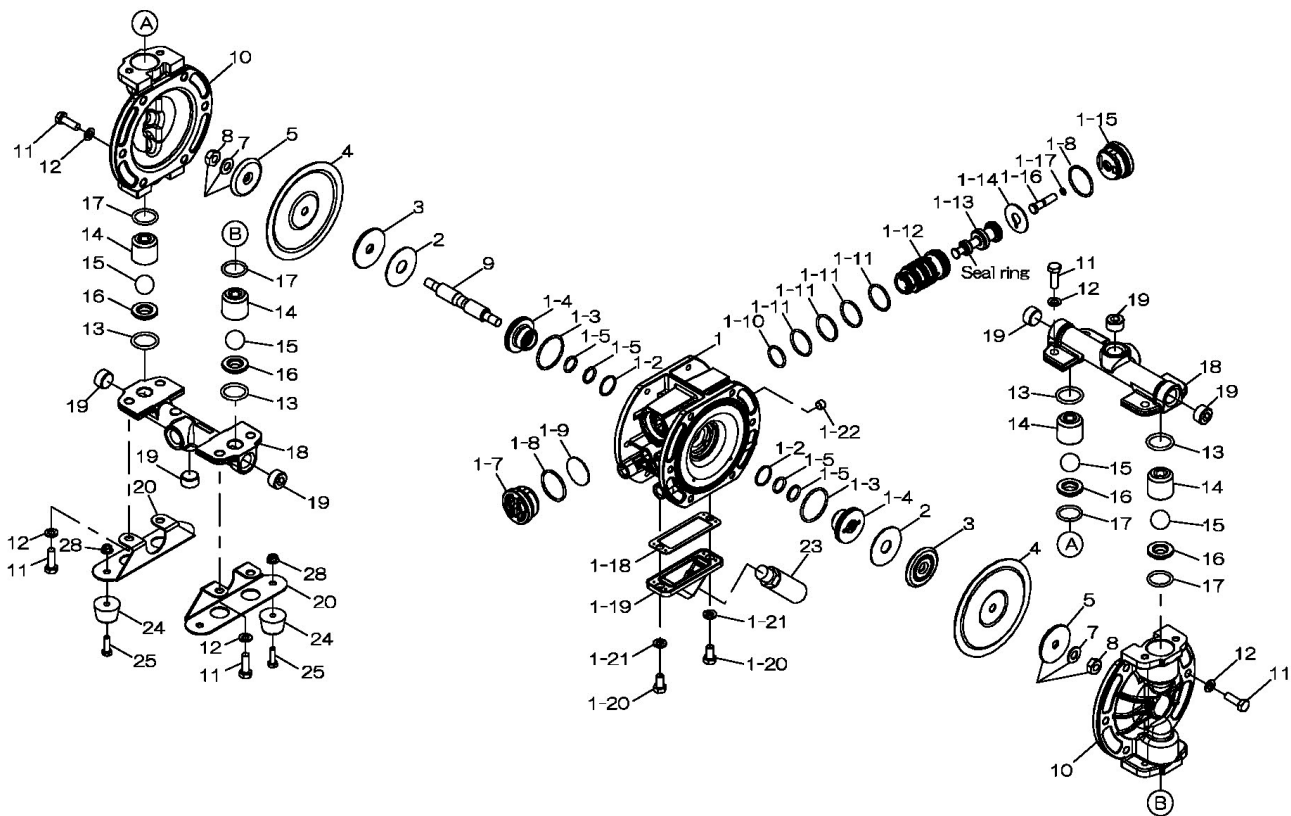
Model: G15AN/H/S  
Aluminum Series



Air Operated Double Diaphragm Pump

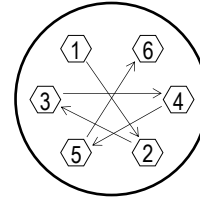


Trial Program



Air Operated Double Diaphragm Pump

	G15AN	G15AH	G15AS			
	854700	854702	854703			
REF. NO.	PART NO.	PART NO.	PART NO.	DESCRIPTION	QTY.	REORDER
1	805130	805130	805130	BODY ASSY.	1	
1-1	717082	717082	717082	BODY	1	
1-2	684725	684725	684725	O-RING	2	
1-3	686733	686733	686733	O-RING	2	
1-4	773279	773279	773279	GUIDE BUSH	2	
1-5	640015	640015	640015	O-RING	4	
1-7	716917	716917	716917	CAP A	1	
1-8	686734	686734	686734	O-RING	2	
1-9	773280	773280	773280	CUSHION	1	
1-10	685276	685276	685276	O-RING	1	
1-11	686029	686029	686029	O-RING	4	
1-12	716950	716950	716950	SLEEVE	1	
1-13	805131	805131	805131	SPOOL ASSY.	1	
1-14	773281	773281	773281	CUSHION	1	
1-15	716918	716918	716918	CAP B	1	
1-16	717035	717035	717035	RESET BUTTON	1	
1-17	640002	640002	640002	O-RING	1	
1-18	773283	773283	773283	GASKET	1	
1-19	717083	717083	717083	COVER	1	
1-20	611145	611145	611145	BOLT	2	
1-21	631916	631916	631916	WAVE WASHER	2	
1-22	634360	634360	634360	PLUG	1	
2	773278	773278	773278	CUSHION	2	
3	716923	716923	716923	CENTER DISK (INNER)	2	
4	773277	773316	773315	DIAPHRAGM	2	
5	716924	716924	716924	CENTER DISK (OUTER)	2	
7	681303	681303	681303	LOCK WASHER M10 SS	2	
8	683636	683636	683636	NUT M10x1.50	2	
9	717100	717100	717100	CENTER ROD	1	
10	716920	716920	716920	OUT CHAMBER	2	
11	611149	611149	611149	BOLT	20	
12	631916	631916	631916	WAVE WASHER	20	
13	640025	640025	684114	O-RING	4	
14	717098	717098	717098	BALL GUIDE	4	
15	773422	773374	773424	BALL	4	
16	711227	717099	711227	VALVE SEAT 15AL	4	
17	640130	640130	684113	O-RING	4	
18	717084	717084	717084	MANIFOLD	2	
19	686789	686789	686789	PLUG 1/2" NPT	6	
20	717186	717186	717186	BASE	2	
23	682520	682520	682520	SILENCER	1	
24	771123	771123	771123	FOOT RUBBER	4	
25	611101	611101	611101	BOLT M6x1.0x20	4	
28	682817	682817	682817	NUT W/FLANGE M6x1.0	4	
KIT	KG15-MN	KG15-MH	KG15-MS	LIQUID END KIT		
KIT		KG15-AM-M		AIR MOTOR KIT		



**Tightening torque for center rod and out chambers.**  
 Center Rod 160 in-lbf {18 N-m}  
 Out Chamber 105 in-lbf {12 N-m}

**Tightening torque for manifold retainer bolts.**  
 G15AN/H/S 105 in-lbf {12 N-m}

- General Tools:**
- Socket wrench - 10mm, 13mm, 17mm
  - Hexagonal box wrenches - 5mm
  - Open-end wrench - 10mm, 13mm, 17mm

- Special Tools:**
- Cap & disc remover (771132)
  - Sleeve remover (713148)

- Miscellaneous:**
- Assembly Oil—turbine oil none additional class 1 (equivalent to ISO VG32 grade)
  - Urea grease grade (NLGI) No. 2

**Customer Notes**

Model #: \_\_\_\_\_  
 Description: \_\_\_\_\_  
 Serial #: \_\_\_\_\_  
 Date Installed: \_\_\_\_\_  
 Department Location: \_\_\_\_\_  
 Tag/Project: \_\_\_\_\_

Order Online: [www.PumpCatalog.com](http://www.PumpCatalog.com)