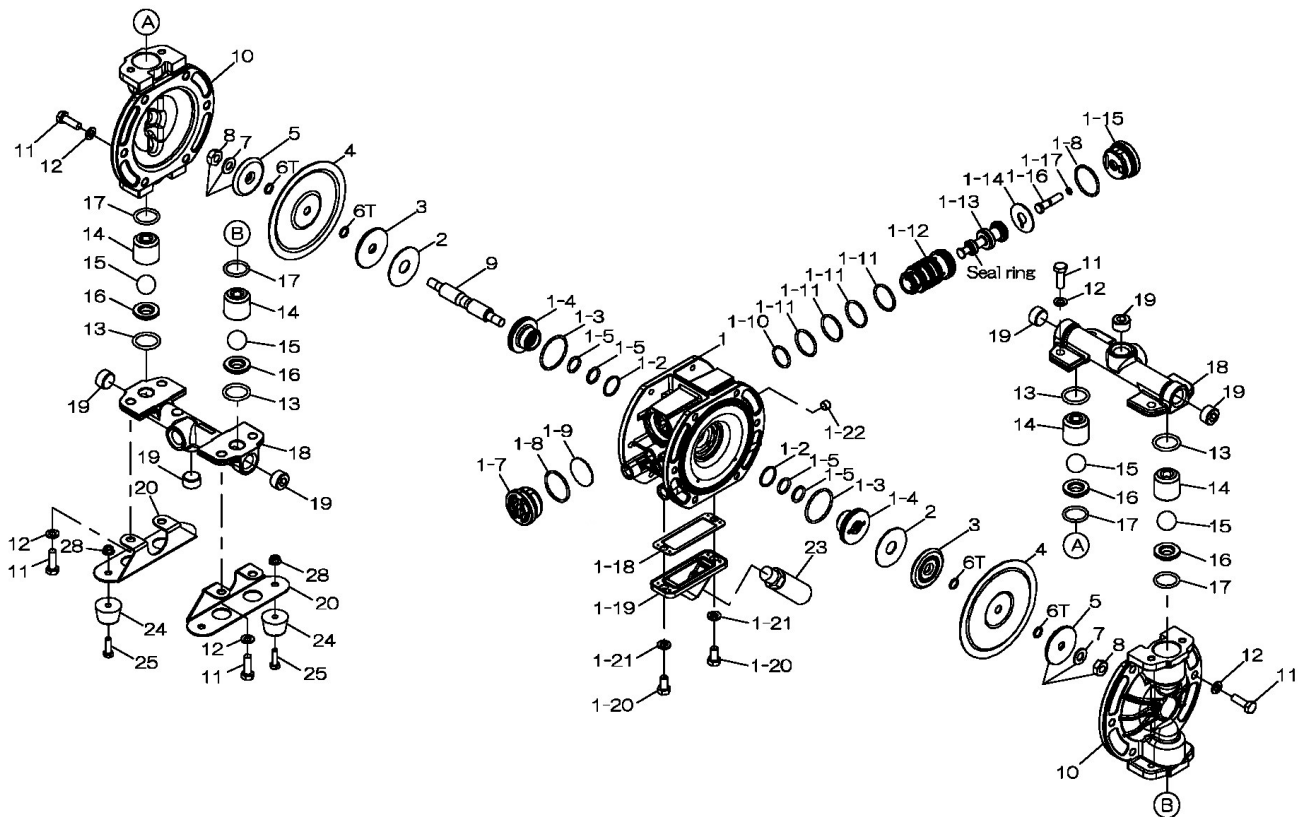


EXPLODED VIEW & PARTS LISTING

Model: G15AT  
Part # 854701

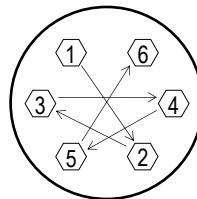


Air Operated Double Diaphragm Pump



Air Operated Double Diaphragm Pump

REF. NO.	PART NO.	DESCRIPTION	QTY.	REORDER
1	805130	BODY ASSY.	1	
1-1	717082	BODY	1	
1-2	684725	O-RING	2	
1-3	686733	O-RING	2	
1-4	773279	GUIDE BUSH	2	
1-5	640015	O-RING	4	
1-7	716917	CAP A	1	
1-8	686734	O-RING	2	
1-9	773280	CUSHION	1	
1-10	685276	O-RING	1	
1-11	686029	O-RING	4	
1-12	716950	SLEEVE	1	
1-13	805131	SPOOL ASSY.	1	
1-14	773281	CUSHION	1	
1-15	716918	CAP B	1	
1-16	717035	RESET BUTTON	1	
1-17	640002	O-RING	1	
1-18	773283	GASKET	1	
1-19	717083	COVER	1	
1-20	611145	BOLT	2	
1-21	631916	WAVE WASHER	2	
1-22	634360	PLUG	1	
2	773278	CUSHION	2	
3	716923	CENTER DISC	2	
4	773276	DIAPHRAGM	2	
5	716924	CENTER DISC	2	
6T	643007	O-RING	4	
7	681303	LOCK WASHER M10 SS	2	
8	683636	NUT M10x1.50	2	
9	717100	CENTER ROD	1	
10	716920	OUT CHAMBER	2	
11	611149	BOLT	20	
12	631916	WAVE WASHER	20	
13	643025	O-RING	4	
14	717098	BALL GUIDE	4	
15	773423	BALL	4	
16	711227	VALVE SEAT 15AL	4	
17	643130	O-RING	4	
18	717084	MANIFOLD	2	
19	686789	PLUG 1/2" NPT	6	
20	717186	BASE	2	
23	682520	SILENCER	1	
24	771123	FOOT RUBBER	4	
25	611101	BOLT M6x1.0x20	4	
28	682817	NUT W/FLANGE M6x1.0	4	
KIT	KG15-MT	LIQUID END KIT		
KIT	KG15-AM-M	AIR MOTOR KIT		



**Tightening torque for center rod and out chambers.**  
 Center Rod 160 in-lbf {18 N-m}  
 Out Chambers 105 in-lbf {12 N-m}

**Tightening torque for manifold retainer bolts.**  
 G15AT 160 in-lbf {18 N-m}

**General Tools:**

- Socket wrench - 10mm, 13mm, 17mm
- Hexagonal box wrenches - 5mm
- Open-end wrench - 10mm, 13mm, 17mm

**Special Tools:**

- Cap & disc remover (771132) used to remove cap
- Sleeve remover (713148) used to remove sleeve

**Miscellaneous:**

- Assembly Oil - turbine oil none additional class 1 (equivalent to ISO VG32 grade)
- Urea grease grade (NLGI) No. 2
- Thread locking agent (equivalent to LOCTITE® 222)

**Customer Notes**

Model #: \_\_\_\_\_  
 Description: \_\_\_\_\_  
 Serial #: \_\_\_\_\_  
 Date Installed: \_\_\_\_\_  
 Department Location: \_\_\_\_\_  
 Tag/Project: \_\_\_\_\_