

EXPLODED VIEW & PARTS LISTING

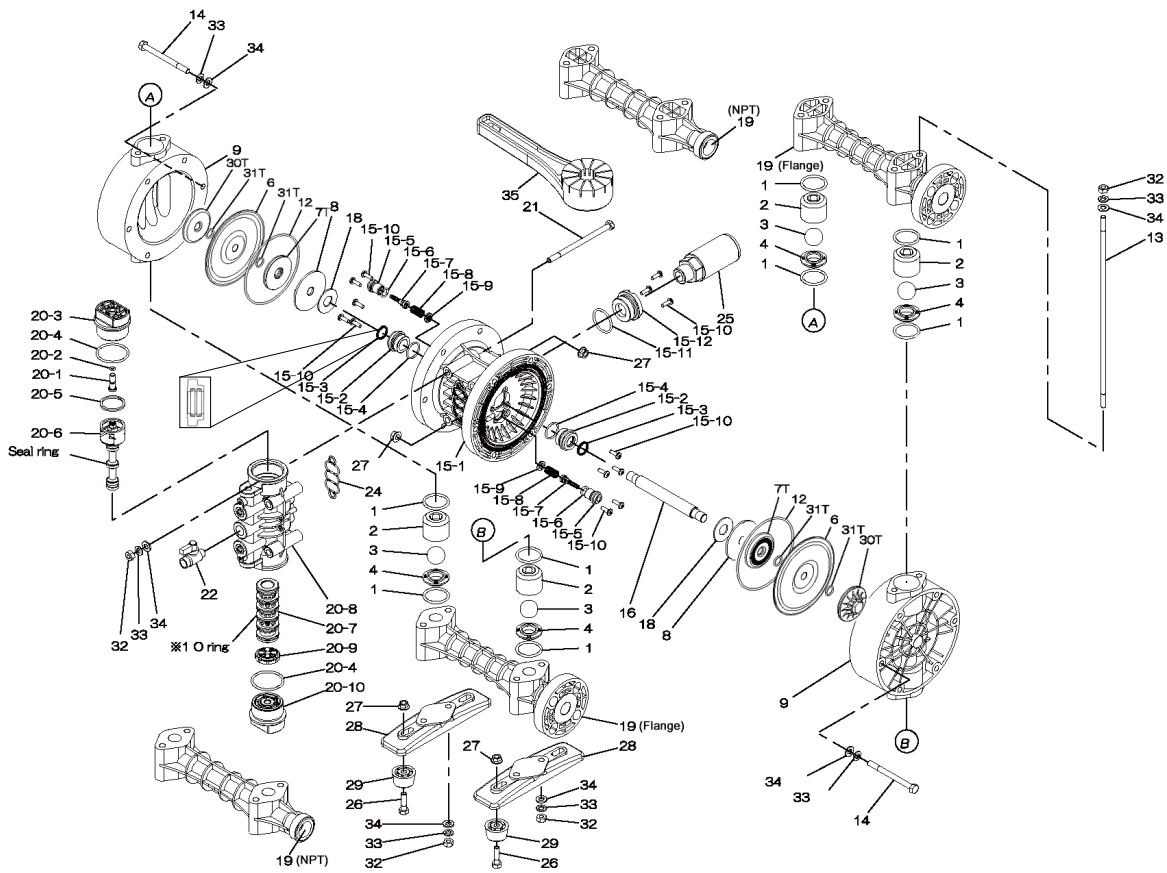
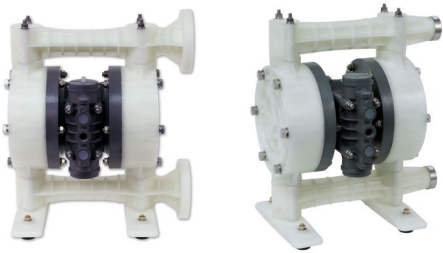
Model: NDP-20BPT-PP



Part # 854098 - NPT

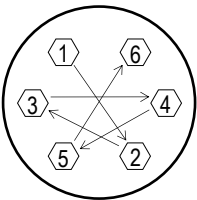
Air Operated Double Diaphragm Pump

Part # 854112 - Flange



REF. No.	PART No.	DESCRIPTION	QTY.	REORDER
1	643033	O-RING	8	
2	771216	BALL GUIDE	4	
3	770736	BALL	4	
4	780137	VALVE SEAT	4	
6	771083	DIAPHRAGM	2	
7T	709456	CENTER DISK (AIR SIDE)	2	
9	780134	OUT CHAMBER	2	
12	640151	O-RING	2	
13	710122	TIE ROD	4	
14	621166	BOLT	12	
15	804603	CENTER BODY ASSY.	1	
15-1	772928	BODY	1	
15-2	780326	THROAT BEARING	2	
15-3	685414	V-PACKING	2	
15-4	685276	O-RING	2	
15-5	772932	VALVE SEAT	2	
15-6	640009	O-RING	2	
15-7	802360	PILOT VALVE ASSY.	2	
15-8	708666	SPRING	2	
15-9	772948	SPRING SEAT	2	
15-10	686030	TAPPING SCREW	13	
15-11	640132	O-RING	1	
15-12	772933	BUSHING	1	
16	710252	CENTER ROD	1	
18	771054	CUSHION	2	
19	780010	MANIFOLD (NPT)	2	
19	780208	MANIFOLD (FLANGE)	2	

REF. No.	PART No.	DESCRIPTION	QTY.	REORDER
20	804608	AIR VALVE BODY ASSY.	1	
20-1	772991	REST BUTTON	1	
20-2	640002	O-RING	1	
20-3	772946	CAP A	1	
20-4	640043	O-RING	2	
20-5	771241	PACKING	1	
20-6	802400	C-SPOOL ASSY.	1	
20-6 seal	771053	SEAL RING	5	
20-7	804609	SLEEVE ASSY.	1	
20-7-*1	686029	O-RING (SLEEVE O.D.)	6	
20-8	832903	VALVE BODY	1	
20-9	771914	CUSHION	1	
20-10	772947	CAP B	1	
21	686031	BOLT	4	
22	686968	BALL VALVE	1	
24	772848	GASKET	1	
25	804697	SILENCER	1	
26	621151	BOLT	4	
27	686032	NUT W/FLANGE	16	
28	771219	PUMP BASE	2	
29	770551	FOOT RUBBER	4	
30T	780124	CENTER DISK (LIQUID SIDE)	2	
31T	643013	O-RING	4	
32	683635	NUT	12	
33	681300	SPRING WASHER	24	
34	631329	WASHER FLAT	24	
35	771244	TOOL	2	
KIT	K20-PT-PP	LIQUID SIDE		
KIT	K225-AP	AIR MOTOR		



**Tightening torque for center rod and out chambers.**  
 Center Rod 29 ft-lbf {40 N-m}  
 Out Chambers 10 ft-lbf {13 N-m}

**Tightening torque for manifold retainer nuts.**  
 BPT-PP 15 ft-lbf {20 N-m}

**General Tools:**

- Socket wrenches - 10mm, 12mm, 13mm, 17mm, 22mm
- Hexagonal box wrench - 5mm
- Open-end wrenches - 12mm, 13mm, 22mm
- Adjustable angle wrenches
- Phillips head screw driver

**Special Tools:**

- Disk remover (771244) (included)
- Sleeve remover (713148) (sold separately)

**Miscellaneous:**

- Assembly Oil - turbine oil none additional class 1 (equivalent to ISO VG32 grade)
- Nuts - M14 x 1.5
- Urea grease grade (NLGI) No. 2

**Customer Notes**

Model #: \_\_\_\_\_  
 Description: \_\_\_\_\_  
 Serial #: \_\_\_\_\_  
 Date Installed: \_\_\_\_\_  
 Department Location: \_\_\_\_\_  
 Tag/Project: \_\_\_\_\_