

EXPLODED VIEW & PARTS LISTING

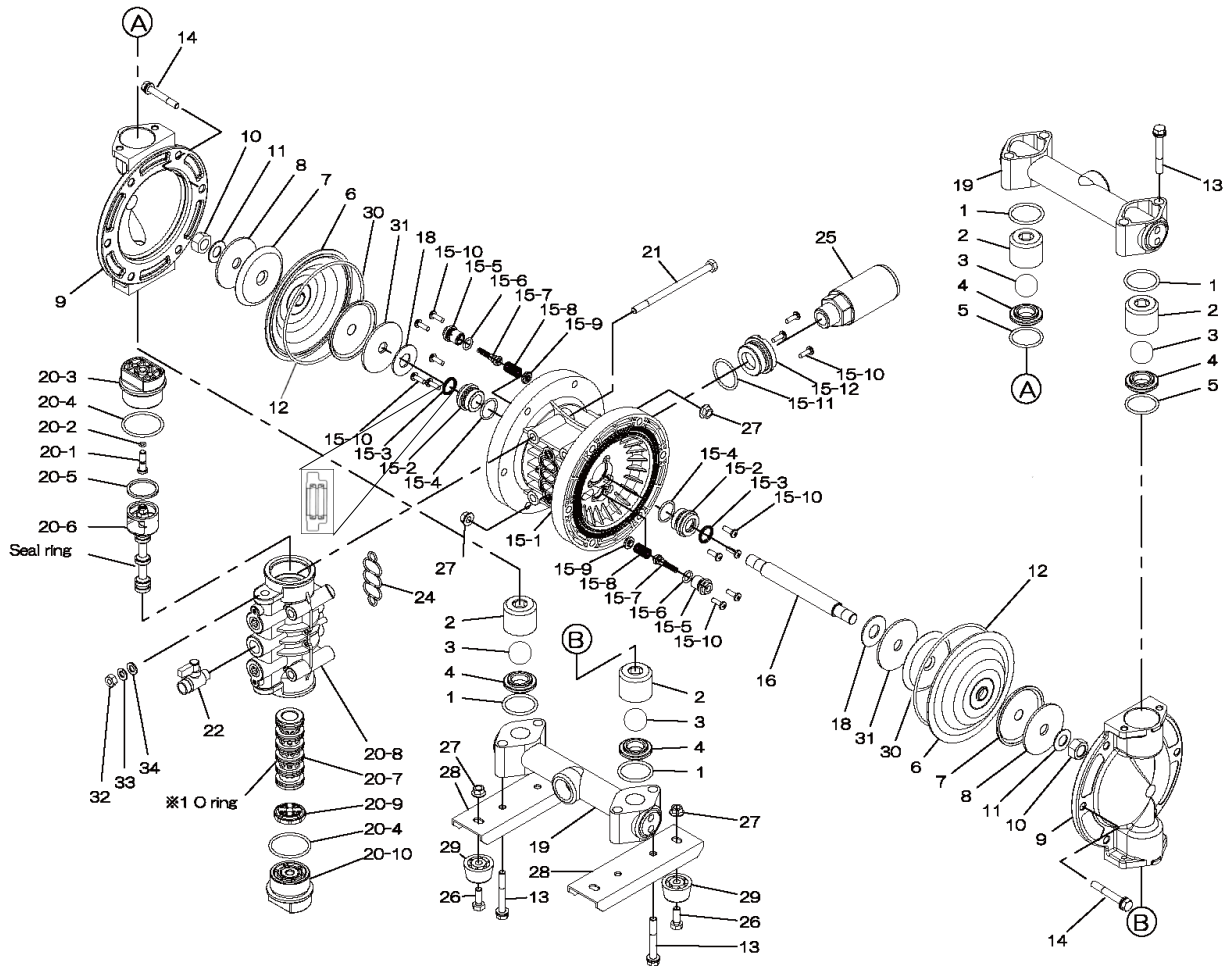
Model: NDP-25BA[x]-PP



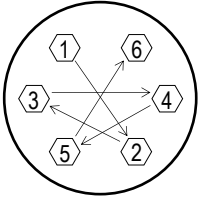
Aluminum Series

Air Operated Double Diaphragm Pump

(rubber fitted w/non-metallic center body)



|           | NDP-25BAC-PP | NDP-25BAE-PP | NDP-25BAH-PP | NDP-25BAN-PP | NDP-25BAS-PP | NDP-25BAV-PP |                           |      |         |
|-----------|--------------|--------------|--------------|--------------|--------------|--------------|---------------------------|------|---------|
|           | 854122       | 854124       | 854127       | 854123       | 854128       | 854125       |                           |      |         |
| REF. No.  | PART No.     | PART No.     | PART No.     | PART No.     | PART No.     | PART No.     | DESCRIPTION               | QTY. | REORDER |
| 1         | 640044       | 683997       | 640044       | 640044       | 683997       | 642044       | O-RING                    | 4    |         |
| 2         | 711702       | 711702       | 711702       | 711702       | 711702       | 711702       | BALL GUIDE                | 4    |         |
| 3         | 770556       | 770590       | 773127       | 770581       | 773171       | 770599       | BALL                      | 4    |         |
| 4         | 590087       | 590087       | 590087       | 590087       | 590087       | 590087       | VALVE SEAT                | 4    |         |
| 5         | 640134       | 683996       | 640134       | 640134       | 683996       | 642134       | O-RING                    | 2    |         |
| 6         | 772961       | 772963       | 771363       | 772962       | 771974       | 772964       | DIAPHRAGM                 | 2    |         |
| 7         | 709151       | 709151       | 709151       | 709151       | 709151       | 709151       | CENTER DISK (LIQUID SIDE) | 2    |         |
| 8         | 709150       | 709150       | 709150       | 709150       | 709150       | 709150       | WASHER (LIQUID SIDE)      | 2    |         |
| 9         | 711687       | 711687       | 711687       | 711687       | 711687       | 711687       | OUT CHAMBER               | 2    |         |
| 10        | 682263       | 682263       | 682263       | 682263       | 682263       | 682263       | NUT                       | 2    |         |
| 11        | 682730       | 682730       | 682730       | 682730       | 682730       | 682730       | CONED DISK SPRING         | 2    |         |
| 12        | -            | -            | 640154       | -            | 640154       | -            | O-RING                    | 2    |         |
| 13        | 611185       | 611185       | 611185       | 611185       | 611185       | 611185       | BOLT                      | 8    |         |
| 13        | 631917       | 631917       | 631917       | 631917       | 631917       | 631917       | WAVE WASHER               | 8    |         |
| 14        | 611177       | 611177       | 611177       | 611177       | 611177       | 611177       | BOLT                      | 12   |         |
| 14        | 631917       | 631917       | 631917       | 631917       | 631917       | 631917       | WAVE WASHER               | 12   |         |
| 15        | 804604       | 804604       | 804604       | 804604       | 804604       | 804604       | BODY ASSY.                | 1    |         |
| 15-1      | 772929       | 772929       | 772929       | 772929       | 772929       | 772929       | BODY -PP                  | 1    |         |
| 15-2      | 780326       | 780326       | 780326       | 780326       | 780326       | 780326       | THROAT BEARING            | 2    |         |
| 15-3      | 685414       | 685414       | 685414       | 685414       | 685414       | 685414       | V-PACKING                 | 2    |         |
| 15-4      | 685276       | 685276       | 685276       | 685276       | 685276       | 685276       | O-RING                    | 2    |         |
| 15-5      | 772932       | 772932       | 772932       | 772932       | 772932       | 772932       | VALVE SEAT                | 2    |         |
| 15-6      | 640009       | 640009       | 640009       | 640009       | 640009       | 640009       | O-RING                    | 2    |         |
| 15-7      | 802360       | 802360       | 802360       | 802360       | 802360       | 802360       | PILOT VALVE ASSY.         | 2    |         |
| 15-8      | 708666       | 708666       | 708666       | 708666       | 708666       | 708666       | SPRING                    | 2    |         |
| 15-9      | 772948       | 772948       | 772948       | 772948       | 772948       | 772948       | SPRING SEAT               | 2    |         |
| 15-10     | 686030       | 686030       | 686030       | 686030       | 686030       | 686030       | TAPPING SCREW             | 13   |         |
| 15-11     | 640132       | 640132       | 640132       | 640132       | 640132       | 640132       | O-RING                    | 1    |         |
| 15-12     | 772933       | 772933       | 772933       | 772933       | 772933       | 772933       | BUSHING                   | 1    |         |
| 16        | 709162       | 709162       | 709162       | 709162       | 709162       | 709162       | CENTER ROD                | 1    |         |
| 18        | 771054       | 771054       | 771054       | 771054       | 771054       | 771054       | CUSHION                   | 2    |         |
| 19        | 831281       | 831281       | 831281       | 831281       | 831281       | 831281       | MANIFOLD ASSY.            | 2    |         |
| 20        | 804608       | 804608       | 804608       | 804608       | 804608       | 804608       | VALVE BODY ASSY.          | 1    |         |
| 20-1      | 772991       | 772991       | 772991       | 772991       | 772991       | 772991       | RESET BUTTON              | 1    |         |
| 20-2      | 640002       | 640002       | 640002       | 640002       | 640002       | 640002       | O-RING                    | 1    |         |
| 20-3      | 772946       | 772946       | 772946       | 772946       | 772946       | 772946       | CAP A                     | 1    |         |
| 20-4      | 640043       | 640043       | 640043       | 640043       | 640043       | 640043       | O-RING                    | 2    |         |
| 20-5      | 771241       | 771241       | 771241       | 771241       | 771241       | 771241       | PACKING                   | 1    |         |
| 20-6      | 802400       | 802400       | 802400       | 802400       | 802400       | 802400       | C-SPOOL ASSY.             | 1    |         |
| 20-6-seal | 771053       | 771053       | 771053       | 771053       | 771053       | 771053       | SEAL RING                 | 5    |         |
| 20-7      | 804609       | 804609       | 804609       | 804609       | 804609       | 804609       | SLEEVE ASSY.              | 1    |         |
| 20-7-*1   | 686029       | 686029       | 686029       | 686029       | 686029       | 686029       | O-RING                    | 6    |         |
| 20-8      | 832903       | 832903       | 832903       | 832903       | 832903       | 832903       | VALVE BODY                | 1    |         |
| 20-9      | 771914       | 771914       | 771914       | 771914       | 771914       | 771914       | CUSHION                   | 1    |         |
| 20-10     | 772947       | 772947       | 772947       | 772947       | 772947       | 772947       | CAP B                     | 1    |         |
| 21        | 682265       | 682265       | 682265       | 682265       | 682265       | 682265       | BOLT                      | 4    |         |
| 22        | 686970       | 686970       | 686970       | 686970       | 686970       | 686970       | BALL VALVE                | 1    |         |
| 24        | 771056       | 771056       | 771056       | 771056       | 771056       | 771056       | GASKET                    | 1    |         |
| 25        | 804697       | 804697       | 804697       | 804697       | 804697       | 804697       | MUFFLER                   | 1    |         |
| 26        | 611148       | 611148       | 611148       | 611148       | 611148       | 611148       | BOLT                      | 4    |         |
| 27        | 682276       | 682276       | 682276       | 682276       | 682276       | 682276       | NUT W/FLANGE              | 16   |         |
| 28        | 709156       | 709156       | 709156       | 709156       | 709156       | 709156       | BASE                      | 2    |         |
| 29        | 770551       | 770551       | 770551       | 770551       | 770551       | 770551       | FOOT RUBBER               | 4    |         |
| 30        | 716258       | 716258       | 716258       | 716258       | 716258       | 716258       | CENTER DISC               | 2    |         |
| 31        | 716259       | 716259       | 716259       | 716259       | 716259       | 716259       | WASHER                    | 2    |         |
| 32        | 683635       | 683635       | 683635       | 683635       | 683635       | 683635       | NUT                       | 4    |         |
| 33        | 681300       | 681300       | 681300       | 681300       | 681300       | 681300       | SPRING WASHER (AIR SIDE)  | 4    |         |
| 34        | 631329       | 631329       | 631329       | 631329       | 631329       | 631329       | FLAT WASHER (AIR SIDE)    | 4    |         |
| KIT       | K25-MC-1     | K25-ME-1     | K25-MH-1     | K25-MN-1     | K25-MS-1     | K25-MV-1     | LIQUID SIDE KIT           |      |         |
| KIT       | K225-AP      |              |              |              |              |              | AIR MOTOR KIT             |      |         |



**Tightening torque for center rod and out chambers.**

|                      |                    |
|----------------------|--------------------|
| Center Rod           | 29 ft-lbf {40 N-m} |
| Out Chambers C/N/E/V | 8 ft-lbf {10 N-m}  |
| Out Chambers H/S     | 15 ft-lbf {20 N-m} |

**Tightening torque for manifold retainer bolts.**

|         |                    |
|---------|--------------------|
| C/E/N/V | 8 ft-lbf {10 N-m}  |
| S/H     | 25 ft-lbf {35 N-m} |

**General Tools:**

- Socket wrench - 10mm, 12mm, 13mm, 17mm, 22mm
- Hexagonal box wrench - 5mm
- Open-end wrench - 12mm, 13mm, 22mm
- Adjustable angle wrenches
- Phillips head screw driver

**Special Tools:**

- Sleeve remover (713148) used to remove the sleeve.

**Miscellaneous:**

- Assembly Oil - turbine oil none additional class 1 (equivalent to ISO VG32 grade)
- Nuts - M14 x 1.5
- Urea grease grade (NLGI) No. 2

**Customer Notes**

Model #: \_\_\_\_\_  
 Description: \_\_\_\_\_  
 Serial #: \_\_\_\_\_  
 Date Installed: \_\_\_\_\_  
 Department Location: \_\_\_\_\_  
 Tag/Project: \_\_\_\_\_