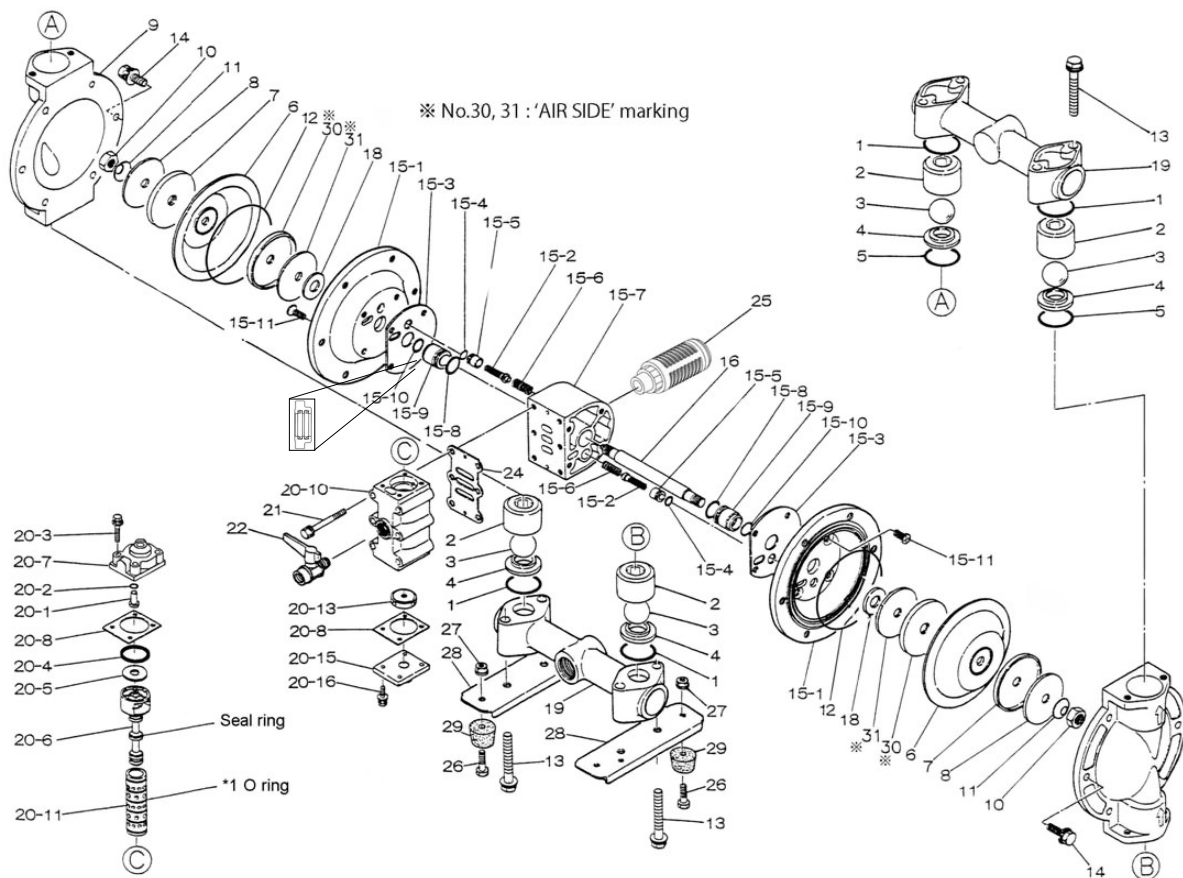


Air Operated Double Diaphragm Pump



Air Operated Double Diaphragm Pump

	NDP-25BSC	NDP-25BSN	NDP-25BSE	NDP-25BSH	NDP-25BSS	NDP-25BSV			
	851537	851538	851539	852102	852703	851540			
REF. NO.	PART NO.	PART NO.	PART NO.	PART NO.	PART NO.	PART NO.	DESCRIPTION	QTY.	REORDER
1	640044	640044	683997	640044	683997	642044	O-RING	4	
2	711703	711703	711703	711703	711703	711703	BALL GUIDE 25SS/FC	4	
3	770556	770581	770590	773127	773171	770599	BALL 25	4	
4	711707	711707	711707	711707	711707	711707	VALVE SEAT 25SS NEW	4	
5	640134	640134	683996	640134	683996	642134	O-RING	2	
6	772961	772962	772963	771363	771974	772964	DIAPHRAGM 25	2	
7	709151	709151	709151	709151	709151	709151	CENTER DISK (LIQUID SIDE)	2	
8	709150	709150	709150	709150	709150	709150	WASHER 25R (LIQUID SIDE)	2	
9	711694	711694	711694	711694	711694	711694	OUT CHAMBER 25SS	2	
10	682263	682263	682263	682263	682263	682263	NUT	2	
11	682730	682730	682730	682730	682730	682730	CONED DISK SPRING	2	
12	-	-	-	640154	640154	-	O-RING	2	
13	621185	621185	621185	621185	621185	621185	BOLT	8	
13	631937	631937	631937	631937	631937	631937	WAVE WASHER	8	
14	621177	621177	621177	621177	621177	621177	BOLT	12	
14	631937	631937	631937	631937	631937	631937	WAVE WASHER	12	
15	804880	804880	804880	804880	804880	804880	BODY ASSY	1	
15- 1	715939	715939	715939	715939	715939	715939	AIR CHAMBER	2	
15- 2	802360	802360	802360	802360	802360	802360	PILOT VALVE ASSY 20/25	2	
15- 3	771057	771057	771057	771057	771057	771057	GASKET 20/25	2	
15- 4	640009	640009	640009	640009	640009	640009	O-RING	2	
15- 5	771945	771945	771945	771945	771945	771945	PILOT VALVE SEAT 20/25	2	
15- 6	708666	708666	708666	708666	708666	708666	SPRING 20/25	2	
15- 7	709812	709812	709812	709812	709812	709812	BODY 20/25	1	
15- 8	685276	685276	685276	685276	685276	685276	O-RING	2	
15- 9	780324	780324	780324	780324	780324	780324	THROAT BEARING	2	
15-10	685414	685414	685414	685414	685414	685414	V-PACKING 20/25	2	
15-11	682486	682486	682486	682486	682486	682486	BOLT FLAT HD W/WASHER	8	
16	709162	709162	709162	709162	709162	709162	CENTER ROD 25	1	
18	771054	771054	771054	771054	771054	771054	CUSHION 20/25	2	
19	831271	831271	831271	831271	831271	831271	MANIFOLD 25SS	2	
20	802362	802362	802362	802362	802362	802362	VALVE ASSY	1	
20- 1	709161	709161	709161	709161	709161	709161	RESET BUTTON 20/25	1	
20- 2	640005	640005	640005	640005	640005	640005	O-RING	1	
20- 3	682704	682704	682704	682704	682704	682704	BOLT M6 FT ZINC W/WASH	4	
20- 4	771241	771241	771241	771241	771241	771241	PACKING 20/25	1	
20- 5	715961	715961	715961	715961	715961	715961	WASHER	1	
20- 6	802400	802400	802400	802400	802400	802400	C SPOOL ASSY.	1	
20-6-seal	771053	771053	771053	771053	771053	771053	SEAL RING	5	
20- 7	710221	710221	710221	710221	710221	710221	CAP A 20/25 METAL	1	
20- 8	771240	771240	771240	771240	771240	771240	GASKET 20/25	2	
20-10	711639	711639	711639	711639	711639	711639	VALVE BODY 20/25 METAL	1	
20-11	803931	803931	803931	803931	803931	803931	SLEEVE ASSY.	1	
20-11-*1	771080	771080	771080	771080	771080	771080	O-RING	6	
20-13	771914	771914	771914	771914	771914	771914	CUSHION 20/25	1	
20-15	709305	709305	709305	709305	709305	709305	CAP B 20/25 METAL	1	
20-16	682262	682262	682262	682262	682262	682262	BOLT M6 FT ZINC W/WASH	4	
21	682265	682265	682265	682265	682265	682265	BOLT M8 PT ZINC W/WASH	6	
22	686970	686970	686970	686970	686970	686970	BALL VALVE 3/8	1	
24	771056	771056	771056	771056	771056	771056	GASKET 20/25	1	
25	804697	804697	804697	804697	804697	804697	MUFFLER 20/25PP	1	
26	611148	611148	611148	611148	611148	611148	BOLT	4	
27	682276	682276	682276	682276	682276	682276	NUT W/ FLANGE	4	
28	709156	709156	709156	709156	709156	709156	BASE 25 METAL	2	
29	770551	770551	770551	770551	770551	770551	FOOT RUBBER	4	
30	716258	716258	716258	716258	716258	716258	CENTER DISK (AIR SIDE)	2	
31	716259	716259	716259	716259	716259	716259	WASHER (AIR SIDE)	2	
KIT	K25-MC-1	K25-MN-1	K25-ME-1	K25-MH-1	K25-MS-1	K25-MV-1	LIQUID END KIT		
KIT	K225-AM						AIR MOTOR KIT		

Air Operated Double Diaphragm Pump

General Tools:

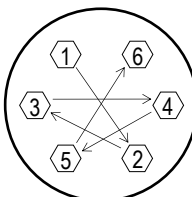
- Socket wrenches - 10mm, 12mm, 13mm, 17mm, 22mm
- Hexagonal box wrench - 5mm
- Open-end wrenches - 22mm

Special Tools:

- Sleeve remover (713148) used to remove sleeves (sold separately).

Miscellaneous:

- Assembly Oil - turbine oil none additional class 1 (equivalent to ISO VCA32 grade)
- Nuts - M14 x 1.5
- Urea grease grade (NLGI) No. 2
- Lubricants - equivalent to Loctite Anti-Seize 767



Tightening torque for center rod and out chambers.

Center Rod	29 ft-lbf {40 N-m}
Out Chambers C/N/E/V	8 ft-lbf {10 N-m}
Out Chambers H/S	15 lbf-ft {20 N-m}

Tightening torque for manifold bolts.

BSC/N/E/H/S/V	8 ft-lbf {10 N-m}
---------------	-------------------

Customer Notes

Model #: _____
 Description: _____
 Serial #: _____
 Date Installed: _____
 Department Location: _____
 Tag/Project: _____