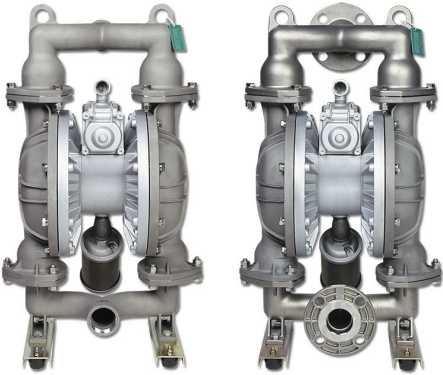


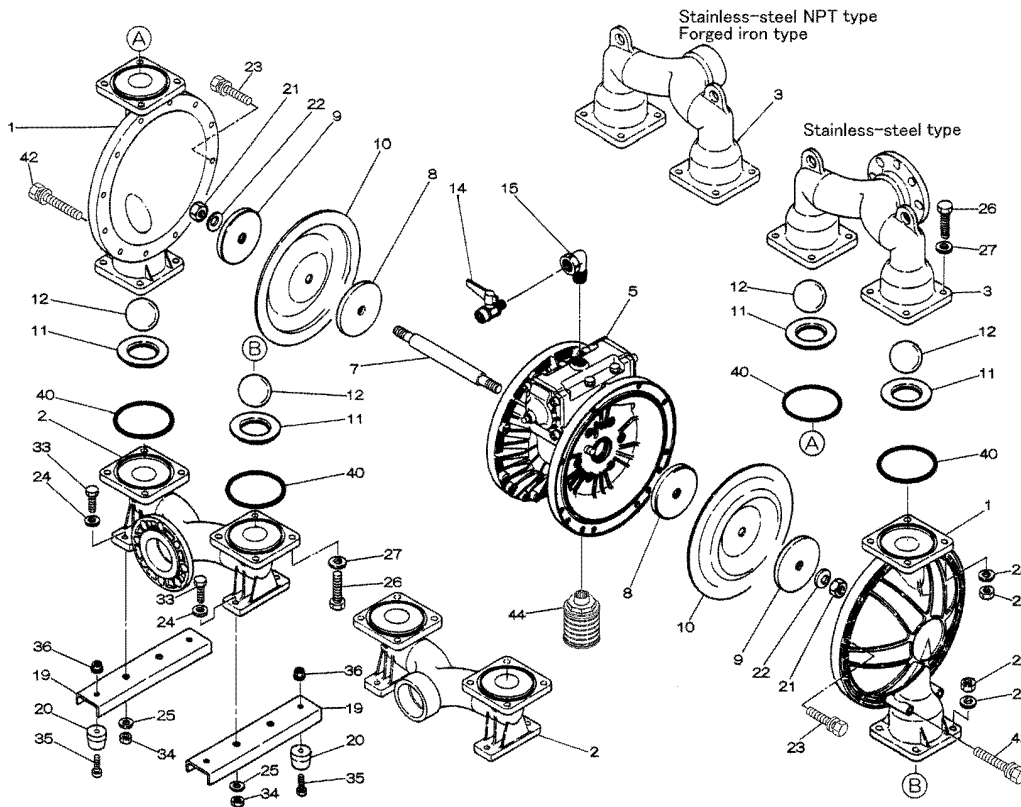
EXPLODED VIEW & PARTS LISTING

Air Operated Double Diaphragm Pump

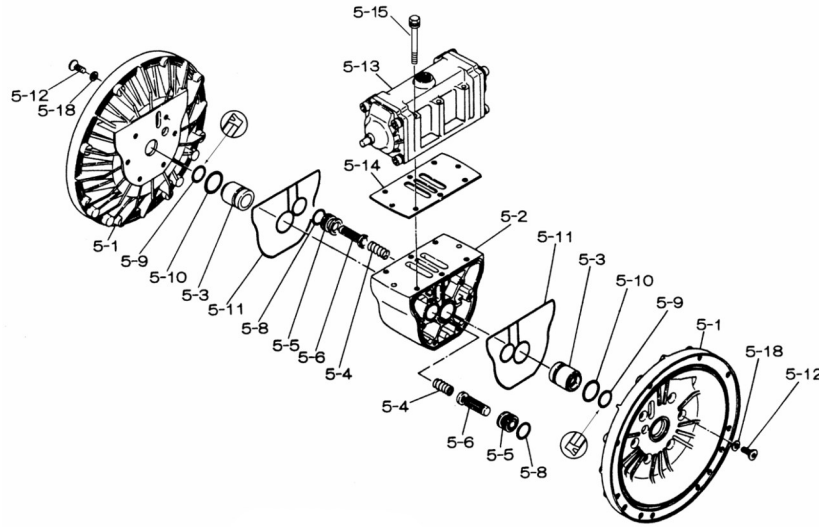
Model: NDP-80BST
Model#: 852243 (FLG)
Model#: 852651 (NPT)



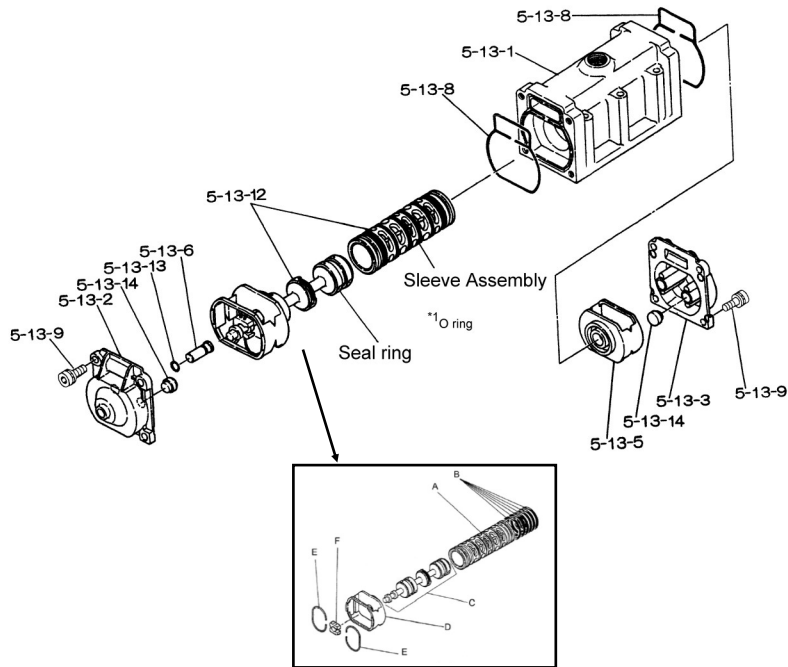
Trial Program



■ Body Assembly



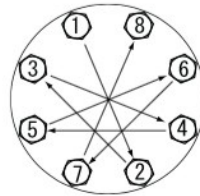
■ Valve Body Assembly



Air Operated Double Diaphragm Pump

REF. No.	PARTS No.	DESCRIPTION	QTY.	REORDER
1	712933	OUT CHAMBER	2	
2	712605	IN MANIFOLD (NPT)	1	
2	712603	IN MANIFOLD (FLT)	1	
3	712604	OUT MANIFOLD (NPT)	1	
3	712602	OUT MANIFOLD (FLG)	1	
5	803113	CENTER BODY ASSY.	1	
5- 1	711935	AIR CHAMBER	2	
5- 2	711936	BODY	1	
5- 3	772689	THROAT BEARING	2	
5- 4	711937	PILOT VALVE SPRING	2	
5- 5	771740	PILOT VALVE SEAT	2	
5- 6	832163	PILOT VALVE ASSY.	2	
5- 8	640020	O-RING	2	
5- 9	685444	V-PACKING	2	
5-10	640029	O-RING	2	
5-11	771742	GASKET	2	
5-12	683812	FLAT SOCKET	12	
5-13	802971	VALVE BODY ASSY.	1	
5-13-1	711931	VALVE BODY	1	
5-13-2	580999	CAP A	1	
5-13-3	581000	CAP B	1	
5-13-5	771735	SPRING RETAINER	1	
5-13-6	712976	RESET BUTTON	1	
5-13-8	771738	GASKET	2	
5-13-9	685036	SOCKET BOLT	8	
5-13-12	805084	C-SPOOL ASSY.	1	
A	803675	SLEEVE ASSY.	1	
B	640036	O-RING	6	
C	805085	SPOOL ASSY.	1	
D	771735	SPRING RETAINER	1	
E	711932	C-SPRING	2	
F	771734	BLOCK	1	
5-13-13	640005	O-RING	1	
5-13-14	684128	CUSHION	4	
5-14	771712	GASKET	1	
5-15	684240	BOLT W/WASHERS	6	
5-18	684987	WASHER	12	
7	711940	CENTER ROD	1	
8	711041	CENTER DISC	2	
9	711039	CENTER DISC	2	
10	770934	DIAPHRAGM	2	
11	711910	VALVE SEAT	4	
12	770694	BALL	4	
14	684322	BALL VALVE	1	
15	682523	ELBOW	1	
19	711912	BASE	2	
20	771402	FOOT RUBBER	4	
21	706144	NUT	2	
22	682740	WASHER	2	
23-a	621182	BOLT	20	
23-b	631937	WAVE WASHER	20	

REF. No.	PARTS No.	DESCRIPTION	QTY.	REORDER
24	631174	FLAT WASHER	4	
25	631937	WAVE WASHER	4	
26	621203	BOLT	16	
27	631175	FLAT WASHER	16	
28	631938	WAVE WASHER	16	
29	628014	NUT	16	
33	621177	BOLT	4	
34	628013	NUT	4	
35	611149	BOLT	4	
36	682276	NUT W/FLANGE	4	
40	643078	O-RING	4	
41T	643015	O-RING	4	
42-a	683543	BOLT	4	
42-b	631937	WAVE WASHER	4	
44	804764	SILENCER ASSY.	1	
53T	643145	O-RING	4	
KIT	K80-MT	LIQUID SIDE KIT		
KIT	K80-AM	AIR MOTOR KIT		



Tightening torque for center rod and out chambers.

Center Rod 43 ft-lbf {60 N-m}
 Out Chambers 29 ft-lbf {40 N-m}

Tightening torque for manifold retainer bolts.
 BST 15 ft-lbf {20 N-m}

General Tools:

- Socket wrenches - 24mm
- Hexagonal box wrench - 5mm, 6mm
- Open-end wrenches - 19mm, 24mm
- Plastic hammer

Special Tools:

- Sleeve remover (713180) used for removing the sleeve. (sold separately)

Miscellaneous:

- Assembly Oil - turbine oil none additional class 1 (equivalent to ISA VGA32 grade)
- Nuts - M16 x 1.5
- Thread locker
- Urea grease grade (NLGI) No. 2

Customer Notes	
Model #:	_____
Description:	_____
Serial #:	_____
Date Installed:	_____
Department Location:	_____
Tag/Project:	_____