

## ELECTRONIC PRICING CATALOG NAVIGATION INSTRUCTIONS



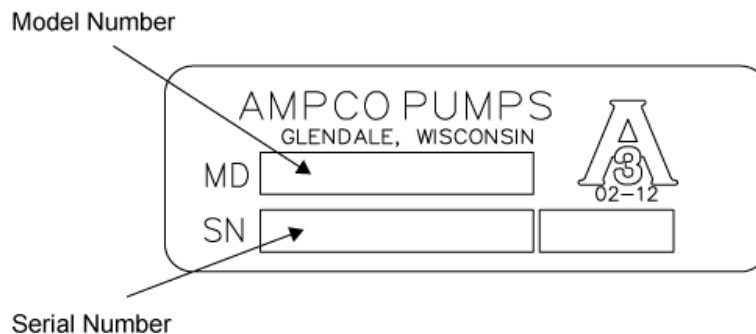
Questions? Call **1-800-810-1053**

### Select by Pump Model:

If you know what pump you are looking for, you can use the 'Bookmarks' tab on the left and select the pump model which you are trying to access. Clicking in the Bookmark will take you to the page you are looking for.

If there are no tabs on the left (bookmarks, signatures, layers, pages), you can use the top menu to make them appear. Goto VIEW > SHOW/HIDE > NAVIGATION PANES > BOOKMARKS and they will appear.

**Sample Pump ID Tag:** See the illustration below for help identifying the location of the Model number and Serial number on the pump ID tag.



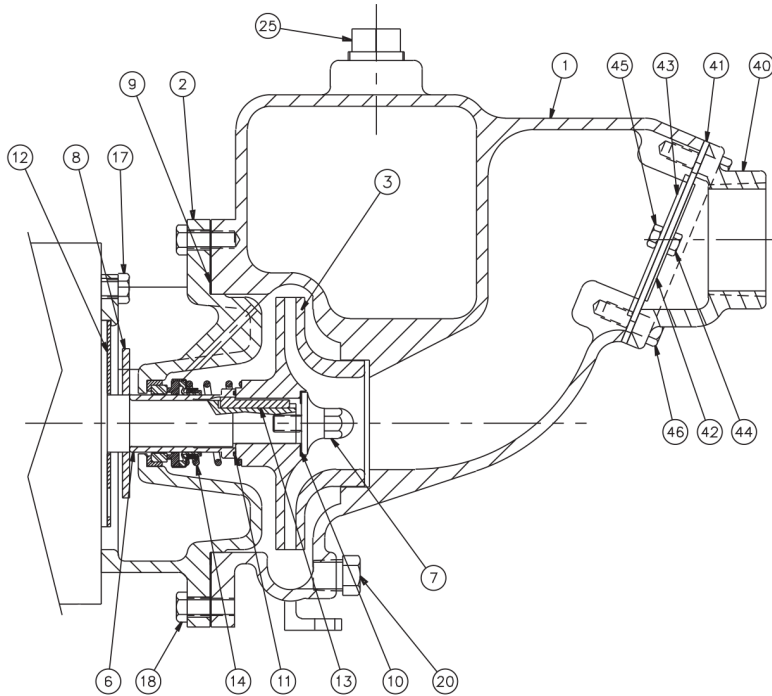
*Please reference your serial number when ordering replacement parts.*

### Select by Part Number:

If you know an exact part number you are looking for, simply hit CONTROL+F and that will bring up the find feature. You may also use the menu, goto EDIT > FIND to bring up the same feature.

Type in your part number and it will show you all instances of that item in the catalog. If you only know some of the part number (i.e. SP328), that will also help and show all occurrences of those numbers together.

Be advised that partials of part number can return a large amount of results.

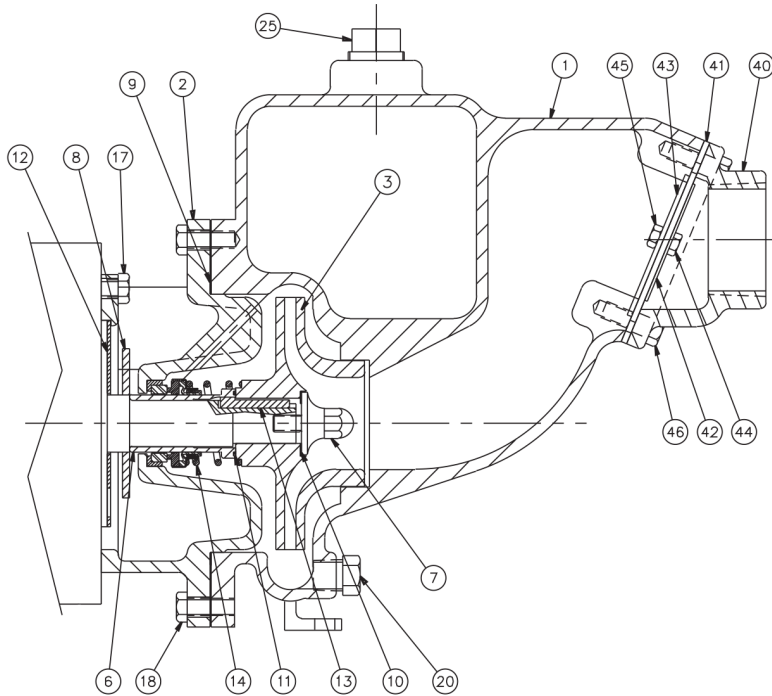


Ref #	Component
1	Casing
2	Cover
3	Impeller
6	Shaft Sleeve
7	Impeller Screw
8	Slinger
9	Gasket, Casing
10	Gasket, Impeller Screw
11	O-Ring, Shaft Sleeve (Sleeve/Impeller)
12	Splashplate
13	Key, Impeller
14	Seal Kit
17	Capscrew (Motor/Adapter)
18	Capscrew (Casing/Adapter)
20	Plug, Drain
25	Plug, Fill
40	Flapper Body
41	Flapper
42	Disc, Flapper, Round
43	Disc, Flapper, Flat Edge
44	Capscrew (Flapper Disc)
45	Locknut, (Flapper Disc)
46	Capscrew (Casing/Flapper Body)

**Exploded View**

*Optional Items Shown in ITALICS*

Ref #	Component Item No.	Description	Qty Per
1	BV8402681	CASING,2X2,A/B,BZ,SELF PRIME RC2	1
2	BC8402701	COVER,22,A&B,SELF PRIMR RC2	1
3	BI8200061	IMPELLER,2X1-1/2,BZ ZC2	1
6	BX8103722	SLEEVE,SHFT,BZ ZC2	1
7	BI8101271	SCREW,IMP,BZ EC/ZC2	1
8	GX5042301	SLINGER,1-7/32X3-1/4X5/32 80 DUR (180JM-210JM)	1
9	GX5107100	GASKET,2X2,SLF PRM,N-8090 6-11/64X5-5/8X1/32	1
10	GX5040500	GASKET,IMP SCRW,7/8X1-3/8X1/32	1
11	GX5098300	O-RING,T21,1-1/4,BUNA,SLV	1
	<i>GX5098301</i>	<i>O-RING,T21,1-1/4,EPDM,SLV (1-1/4 X 1-3/8 X 1/16)</i>	<i>1</i>
	<i>GX5098302</i>	<i>O-RING,43/252/325,VIT DC3</i>	<i>1</i>
12	GX5091600	SPLASHPLATE,EC2/KC2/RC2/ZC2,SS FR143-184	1
13	GX5051300	KEY,IMP, .187SQX1.5 EC KC RC ZC	1
14	GS8109040	KIT,1-1/4,T21,CE/CA/BU RC2	1
	<i>GS8108990</i>	<i>KIT,1-1/4,T21,SC/CAVI RC2</i>	<i>1</i>
17	GX5077100	CAPSCRW,HX,3/8-16X1,18-8SS HX HD	4
18	P1GX30-50	CAPSCRW,HX,3/8-16X3/4,18-8SS HEX HD	8
20	BX5075000	PLUG,PIPE,HEX,1/8IN,BZ RC2 ZC2	1
25	BX5107200	PLUG,PIPE,1IN,BZ RC2	1
40	BX8304181	VALVE,22,CHECK,BDY,BZ RC2	1
41	GX8108343	FLAPPER,22,2IN,EPDM RC2	1
42	SX8108352	DISK,2X2FLAPPER VLV, ROUND RC2	1
43	SX8108351	DISK,2X2,FLAPPER VLV, FLAT EDG RC2	1
44	GX5079603	CAPSCRW,HX,1/4-20X5/8,18-8SS HX HD	1
45	GX5079602	LOCKNUT,1/4-20,18-8SS RC2 RCH2	1
46	GX5077100	CAPSCRW,HX,3/8-16X1,18-8SS HX HD	4

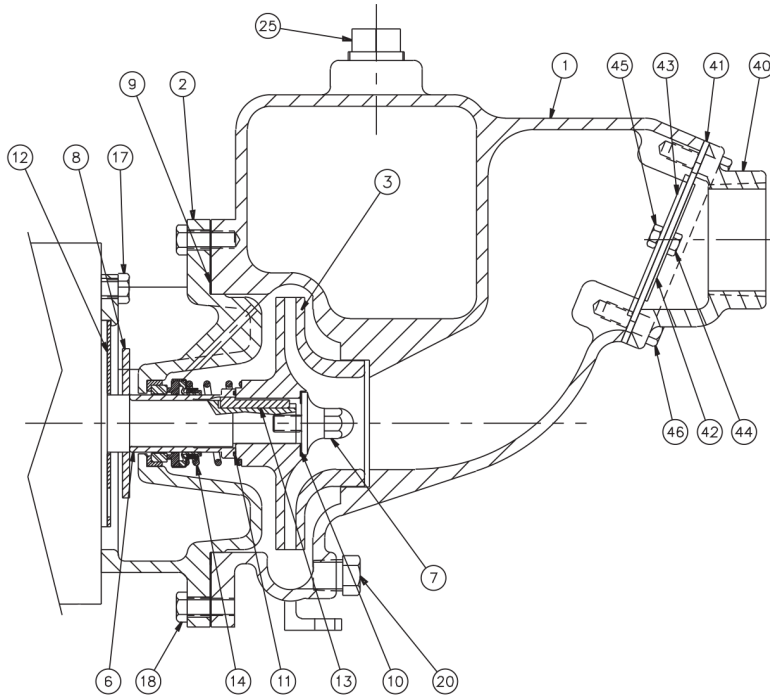


Ref #	Component
1	Casing
2	Cover
3	Impeller
6	Shaft Sleeve
7	Impeller Screw
8	Slinger
9	Gasket, Casing
10	Gasket, Impeller Screw
11	O-Ring, Shaft Sleeve (Sleeve/Impeller)
12	Splashplate
13	Key, Impeller
14	Seal Kit
17	Capscrew (Motor/Adapter)
18	Capscrew (Casing/Adapter)
20	Plug, Drain
25	Plug, Fill
40	Flapper Body
41	Flapper
42	Disc, Flapper, Round
43	Disc, Flapper, Flat Edge
44	Capscrew (Flapper Disc)
45	Locknut, (Flapper Disc)
46	Capscrew (Casing/Flapper Body)

**Exploded View**

*Optional Items Shown in ITALICS*

Ref #	Component Item No.	Description	Qty Per
1	BV8402681	CASING,2X2,A/B,BZ,SELF PRIME RC2	1
2	BC8402701	COVER,22,A&B,SELF PRIMR RC2	1
3	BI8304791	IMPELLER,2X2,B&C,BZ RC2	1
6	BX8103722	SLEEVE,SHFT,BZ ZC2	1
7	BI8101271	SCREW,IMP,BZ EC/ZC2	1
8	GX5042301	SLINGER,1-7/32X3-1/4X5/32 80 DUR (180JM-210JM)	1
9	GX5107100	GASKET,2X2,SLF PRM,N-8090 6-11/64X5-5/8X1/32	1
10	GX5040500	GASKET,IMP SCRW,7/8X1-3/8X1/32	1
11	GX5098300	O-RING,T21,1-1/4,BUNA,SLV	1
	<i>GX5098301</i>	<i>O-RING,T21,1-1/4,EPDM,SLV (1-1/4 X 1-3/8 X 1/16)</i>	<i>1</i>
	<i>GX5098302</i>	<i>O-RING,43/252/325,VIT DC3</i>	<i>1</i>
12	GX5091600	SPLASHPLATE,EC2/KC2/RC2/ZC2,SS FR143-184	1
13	GX5051300	KEY,IMP, .187SQX1.5 EC KC RC ZC	1
14	GS8109040	KIT,1-1/4,T21,CE/CA/BU RC2	1
	<i>GS8108990</i>	<i>KIT,1-1/4,T21,SC/CAVI RC2</i>	<i>1</i>
17	GX5077100	CAPSCRW,HX,3/8-16X1,18-8SS HX HD	4
18	P1GX30-50	CAPSCRW,HX,3/8-16X3/4,18-8SS HEX HD	8
20	BX5075000	PLUG,PIPE,HEX,1/8IN,BZ RC2 ZC2	1
25	BX5107200	PLUG,PIPE,1IN,BZ RC2	1
40	BX8304181	VALVE,22,CHECK,BDY,BZ RC2	1
41	GX8108343	FLAPPER,22,2IN,EPDM RC2	1
42	SX8108352	DISK,2X2FLAPPER VLV, ROUND RC2	1
43	SX8108351	DISK,2X2,FLAPPER VLV, FLAT EDG RC2	1
44	GX5079603	CAPSCRW,HX,1/4-20X5/8,18-8SS HX HD	1
45	GX5079602	LOCKNUT,1/4-20,18-8SS RC2 RCH2	1
46	GX5077100	CAPSCRW,HX,3/8-16X1,18-8SS HX HD	4

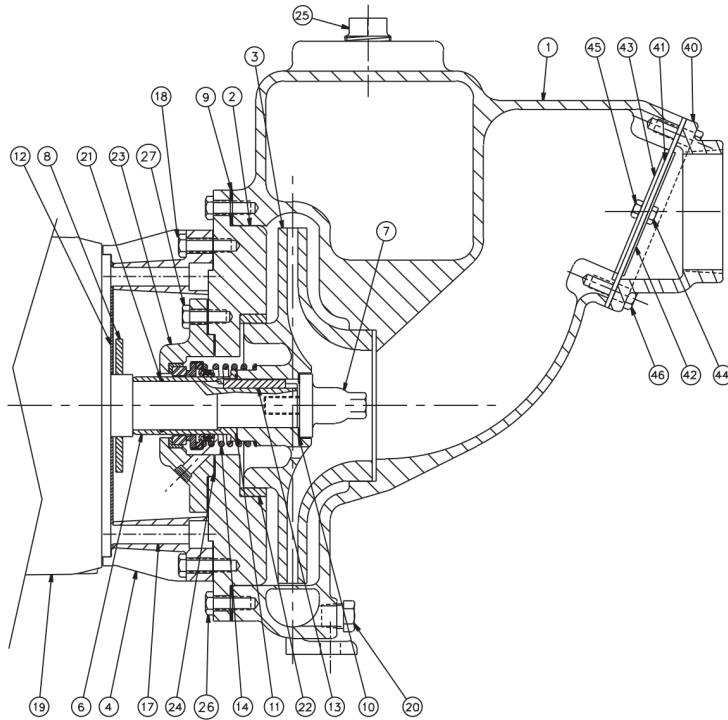


Ref #	Component
1	Casing
2	Cover
3	Impeller
6	Shaft Sleeve
7	Impeller Screw
8	Slinger
9	Gasket, Casing
10	Gasket, Impeller Screw
11	O-Ring, Shaft Sleeve (Sleeve/Impeller)
12	Splashplate
13	Key, Impeller
14	Seal Kit
17	Capscrew (Motor/Adapter)
18	Capscrew (Casing/Adapter)
20	Plug, Drain
25	Plug, Fill
40	Flapper Body
41	Flapper
42	Disc, Flapper, Round
43	Disc, Flapper, Flat Edge
44	Capscrew (Flapper Disc)
45	Locknut, (Flapper Disc)
46	Capscrew (Casing/Flapper Body)

**Exploded View**

*Optional Items Shown in ITALICS*

Ref #	Component Item No.	Description	Qty Per
1	BV8403011	CASING,2X2C,BZ,SELF PRIME RC2	1
2	BC8403001	COVER,2X2C,SELF PRIMER,BZ RC2	1
3	BI8304791	IMPELLER,2X2,B&C,BZ RC2	1
6	BX8103722	SLEEVE,SHFT,BZ ZC2	1
7	BI8101271	SCREW,IMP,BZ EC/ZC2	1
8	GX5042301	SLINGER,1-7/32X3-1/4X5/32 80 DUR (180JM-210JM)	1
9	GX5108400	GASKET,2X2C,CSNG,N-80 90 RC2	1
10	GX5040500	GASKET,IMP SCRW,7/8X1-3/8X1/32	1
11	GX5098300	O-RING,T21,1-1/4,BUNA,SLV	1
	<i>GX5098301</i>	<i>O-RING,T21,1-1/4,EPDM,SLV (1-1/4 X 1-3/8 X 1/16)</i>	<i>1</i>
	<i>GX5098302</i>	<i>O-RING,43/252/325,VIT DC3</i>	<i>1</i>
12	GX5091600	SPLASHPLATE,EC2/KC2/RC2/ZC2,SS FR143-184	1
13	GX5051300	KEY,IMP,.187SQX1.5 EC KC RC ZC	1
14	GS8109040	KIT,1-1/4,T21,CE/CA/BU RC2	1
	<i>GS8108990</i>	<i>KIT,1-1/4,T21,SC/CAVI RC2</i>	<i>1</i>
17	GX5077100	CAPSCRW,HX,3/8-16X1,18-8SS HX HD	4
18	P1GX30-50	CAPSCRW,HX,3/8-16X3/4,18-8SS HEX HD	8
20	BX5075000	PLUG,PIPE,HEX,1/8IN,BZ RC2 ZC2	1
25	BX5107200	PLUG,PIPE,1IN,BZ RC2	1
40	BX8304181	VALVE,22,CHECK,BDY,BZ RC2	1
41	GX8108343	FLAPPER,22,2IN,EPDM RC2	1
42	SX8108352	DISK,2X2FLAPPER VLV, ROUND RC2	1
43	SX8108351	DISK,2X2,FLAPPER VLV, FLAT EDG RC2	1
44	GX5079603	CAPSCRW,HX,1/4-20X5/8,18-8SS HX HD	1
45	GX5079602	LOCKNUT,1/4-20,18-8SS RC2 RCH2	1
46	GX5077100	CAPSCRW,HX,3/8-16X1,18-8SS HX HD	4



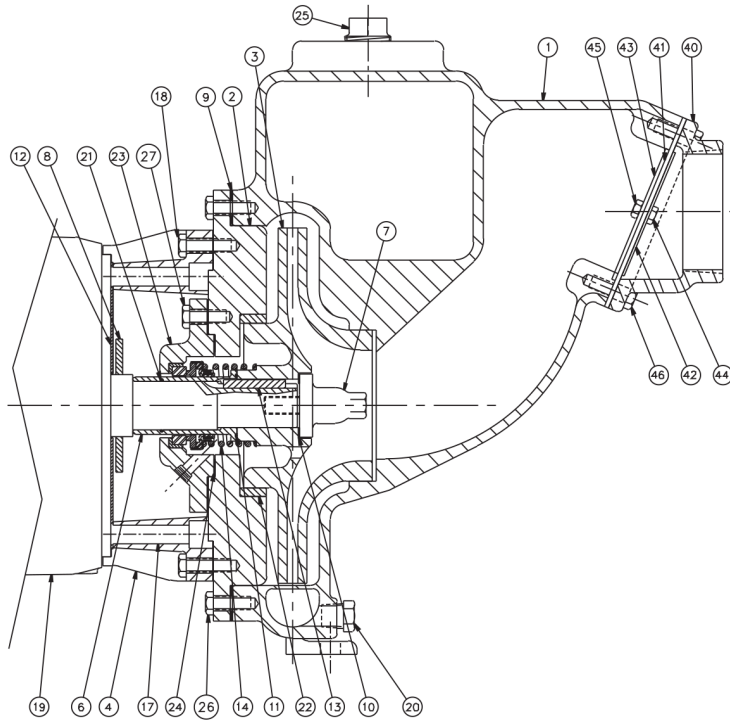
Ref #	Component
1	Casing
2	Cover
3	Impeller
4	Adapter
6	Shaft Sleeve
7	Impeller Screw
8	Slinger
9	Gasket, Casing
10	Gasket, Impeller Screw
11	Gasket Or O-Ring, Shaft Sleeve
12	Splashplate
13	Key, Impeller
14	Seal Kit
17	Capscrew (Motor/Adapter)
18	Capscrew (Casing/Adapter)
20	Plug, Drain
21*	O-Ring, Shaft Sleeve (Shaft/Sleeve)
22	Wear Ring
23	Stuffing Box
24	Gasket, Stuffing Box
25	Plug, Fill
26	Capscrew (Casing/Cover)
27	Capscrew (Cover/Stuffing Box)
40	Flapper Body
41	Flapper
42	Disc, Flapper, Round
43	Disc, Flapper, Flat Edge
44	Capscrew (Flapper Disc)
45	Locknut, (Flapper Disc)
46	Capscrew (Casing/Flapper Body)

\* RCH2 Only

**Exploded View**

*Optional Items Shown in ITALICS*

Ref #	Component Item No.	Description	Qty Per
1	BV8402891	CASING,3X3X10,SELF PRIME,MOTOR	1
2	BC8402261	COVER,32/43L/3310,JM,BZ ZC2 ZCH2 SGL SEAL	1
3	BI8303771	IMPELLER,3X2,BZ,T21 SEAL ZC2	1
4	GX8400951	ADAPTER,100 JM FRAME ZC2	1
	<i>SX8400952</i>	<i>ADAPTER,100 JM FRAME,SS ZC2</i>	1
6	BX8107751	SLEEVE,SHFT,4X3L,BZ ZC2	1
7	BI8107741	SCREW,32/43C/43L/3310,IMP,BZ ZC2 RC2	1
8	GX5042301	SLINGER,1-7/32X3-1/4X5/32 80 DUR (180JM-210JM)	1
9	GX5106200	GASKET,3X2,CVR,CASING 10-1/8X 12-1/8 X 1/16 N-8090	1
10	GX5040500	GASKET,IMP SCR W,7/8X1-3/8X1/32	1
11	GX5040000	GASKET,7/8X1-1/2X1/32,N-8090	1
12	GX5091400	SPLASHPLATE,EC2/KC2/RC2/ZC2,SS FR213-256	1
13	GX5051300	KEY,IMP,,187SQX1.5 EC KC RC ZC	1
14	GS8110250	KIT,1-1/4,3X3,T21,CE/CA/BU RC2	1
	<i>GS8110255-316SS</i>	<i>KIT,1-1/4,337,T21,TC/SC/BU 316SS METALLICS, RC2</i>	1
17	GX5077100	CAPSCRW,HX,3/8-16X1,18-8SS HX HD	4
18	GX5077100	CAPSCRW,HX,3/8-16X1,18-8SS HX HD	8
20	BX5075500	PLUG,PIPE,3/8IN,BZ RC2 ZC2	1
21	GX5038500	O-RING,,989X1.29X.070,BUNA 70 DUR, IMP SCR W	1
	<i>GX5038502</i>	<i>O-RING,T21,1-1/4,EPDM (2-022)</i>	1
	<i>GX5038501</i>	<i>O-RING,43/252/325,VIT,FDA CMPL DC3 ZC2</i>	1
22	BW8107681	RING,WEAR,3X2 4X3 L ,BZ,STUFF BX ZC2 ZCH2	1
23	BX8204301	STUFFING BOX,4X3L,BZ,JM,T21/T1 ZC2	1
24	GX5041900	GASKET,4X3X1/32,N-8090,STFBX STUFFING BOX	1
25	BX5107200	PLUG,PIPE,1IN,BZ RC2	1
26	GX5077100	CAPSCRW,HX,3/8-16X1,18-8SS HX HD	12
27	GX5077100	CAPSCRW,HX,3/8-16X1,18-8SS HX HD	4



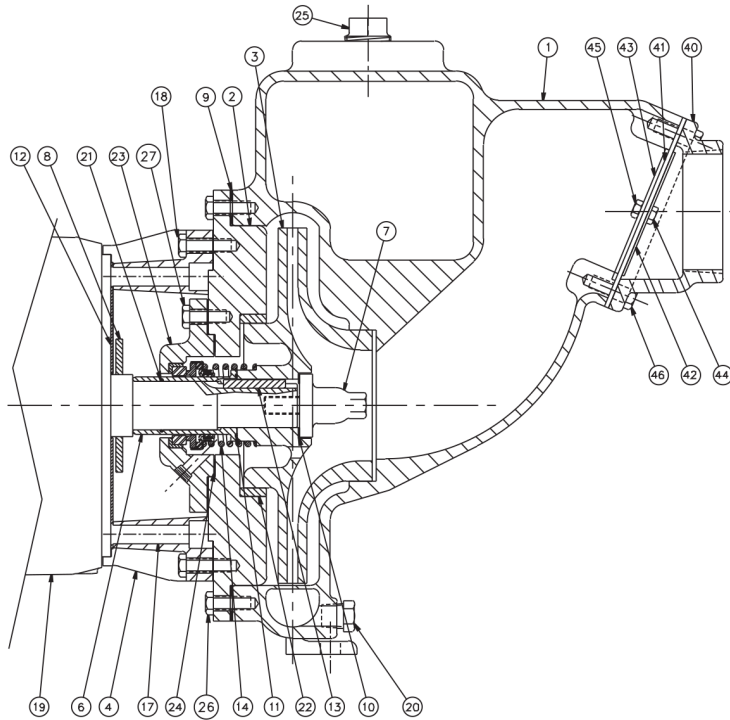
Ref #	Component
1	Casing
2	Cover
3	Impeller
4	Adapter
6	Shaft Sleeve
7	Impeller Screw
8	Slinger
9	Gasket, Casing
10	Gasket, Impeller Screw
11	Gasket Or O-Ring, Shaft Sleeve
12	Splashplate
13	Key, Impeller
14	Seal Kit
17	Capscrew (Motor/Adapter)
18	Capscrew (Casing/Adapter)
20	Plug, Drain
21*	O-Ring, Shaft Sleeve (Shaft/Sleeve)
22	Wear Ring
23	Stuffing Box
24	Gasket, Stuffing Box
25	Plug, Fill
26	Capscrew (Casing/Cover)
27	Capscrew (Cover/Stuffing Box)
40	Flapper Body
41	Flapper
42	Disc, Flapper, Round
43	Disc, Flapper, Flat Edge
44	Capscrew (Flapper Disc)
45	Locknut, (Flapper Disc)
46	Capscrew (Casing/Flapper Body)

\* RCH2 Only

**Exploded View**

*Optional Items Shown in ITALICS*

Ref #	Component Item No.	Description	Qty Per
40	<b>BX8304271</b>	<b>VALVE,FLAPPER,BDY,3X3,BZ RCH2</b>	<b>1</b>
41	<b>GX8108441</b>	<b>FLAPPER,33/337/3310,3IN RC2 RCH2</b>	<b>1</b>
42	<b>SX8108452</b>	<b>DISK,3IN,FLAPPER VLV-SM RC2</b>	<b>1</b>
43	<b>SX8108451</b>	<b>DISK,3IN,FLAPPER VLV,LG RC2</b>	<b>1</b>
44	<b>GX5079603</b>	<b>CAPSCRW,HX,1/4-20X5/8,18-8SS HX HD</b>	<b>1</b>
45	<b>GX5079602</b>	<b>LOCKNUT,1/4-20,18-8SS RC2 RCH2</b>	<b>1</b>
46	<b>GX5077100</b>	<b>CAPSCRW,HX,3/8-16X1,18-8SS HX HD</b>	<b>4</b>



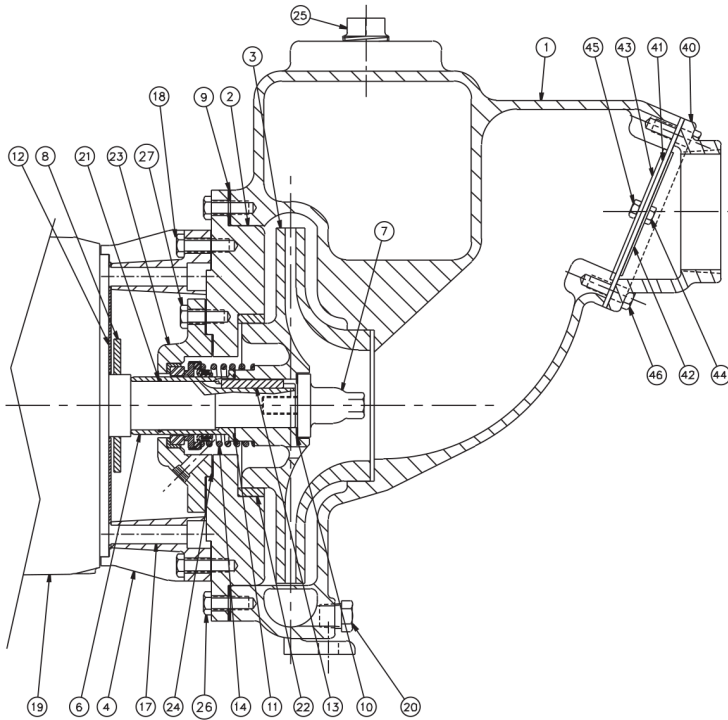
Ref #	Component
1	Casing
2	Cover
3	Impeller
4	Adapter
6	Shaft Sleeve
7	Impeller Screw
8	Slinger
9	Gasket, Casing
10	Gasket, Impeller Screw
11	Gasket Or O-Ring, Shaft Sleeve
12	Splashplate
13	Key, Impeller
14	Seal Kit
17	Capscrew (Motor/Adapter)
18	Capscrew (Casing/Adapter)
20	Plug, Drain
21*	O-Ring, Shaft Sleeve (Shaft/Sleeve)
22	Wear Ring
23	Stuffing Box
24	Gasket, Stuffing Box
25	Plug, Fill
26	Capscrew (Casing/Cover)
27	Capscrew (Cover/Stuffing Box)
40	Flapper Body
41	Flapper
42	Disc, Flapper, Round
43	Disc, Flapper, Flat Edge
44	Capscrew (Flapper Disc)
45	Locknut, (Flapper Disc)
46	Capscrew (Casing/Flapper Body)

\* RCH2 Only

**Exploded View**

*Optional Items Shown in ITALICS*

Ref #	Component Item No.	Description	Qty Per
1	BV8402891	CASING,3X3X10,SELF PRIME,MOTOR	1
2	BC8402261	COVER,32/43L/3310,JM,BZ ZC2 ZCH2 SGL SEAL	1
3	BI8303771	IMPELLER,3X2,BZ,T21 SEAL ZC2	1
4	GX8301391	ADAPTER,210 JM FRAME ZC2	1
	<i>SX8301392</i>	<i>ADAPTER,210 JM FRAME,SS ZC2</i>	<i>1</i>
6	BX8107751	SLEEVE,SHFT,4X3L,BZ ZC2	1
7	BI8107741	SCREW,32/43C/43L/3310,IMP,BZ ZC2 RC2	1
8	GX5042301	SLINGER,1-7/32X3-1/4X5/32 80 DUR (180JM-210JM)	1
9	GX5106200	GASKET,3X2,CVR,CASING 10-1/8X 12-1/8 X 1/16 N-8090	1
10	GX5040500	GASKET,IMP SCRW,7/8X1-3/8X1/32	1
11	GX5040000	GASKET,7/8X1-1/2X1/32,N-8090	1
12	GX5091400	SPLASHPLATE,EC2/KC2/RC2/ZC2,SS FR213-256	1
13	GX5051300	KEY,IMP,,187SQX1.5 EC KC RC ZC	1
14	GS8110250	KIT,1-1/4,3X3,T21,CE/CA/BU RC2	1
	<i>GS8110255-316SS</i>	<i>KIT,1-1/4,337,T21,TC/SC/BU 316SS METALLICS, RC2</i>	<i>1</i>
17	GX5077400	CAPSCRW,SH,1/2-13X1-3/4,BLK OX SCKT HD	4
18	GX5077100	CAPSCRW,HX,3/8-16X1,18-8SS HX HD	8
20	BX5075500	PLUG,PIPE,3/8IN,BZ RC2 ZC2	1
21	GX5038500	O-RING,,989X1.29X.070,BUNA 70 DUR, IMP SCRW	1
	<i>GX5038502</i>	<i>O-RING,T21,1-1/4,EPDM (2-022)</i>	<i>1</i>
	<i>GX5038501</i>	<i>O-RING,43/252/325,VIT,FDA CMPL DC3 ZC2</i>	<i>1</i>
23	BX8204301	STUFFING BOX,4X3L,BZ,JM,T21/T1 ZC2	1
24	GX5041900	GASKET,4X3X1/32,N-8090,STFBX STUFFING BOX	1
25	BX5107200	PLUG,PIPE,1IN,BZ RC2	1
26	GX5077100	CAPSCRW,HX,3/8-16X1,18-8SS HX HD	12
27	GX5077100	CAPSCRW,HX,3/8-16X1,18-8SS HX HD	4
40	BX8304271	VALVE,FLAPPER,BDY,3X3,BZ RCH2	1



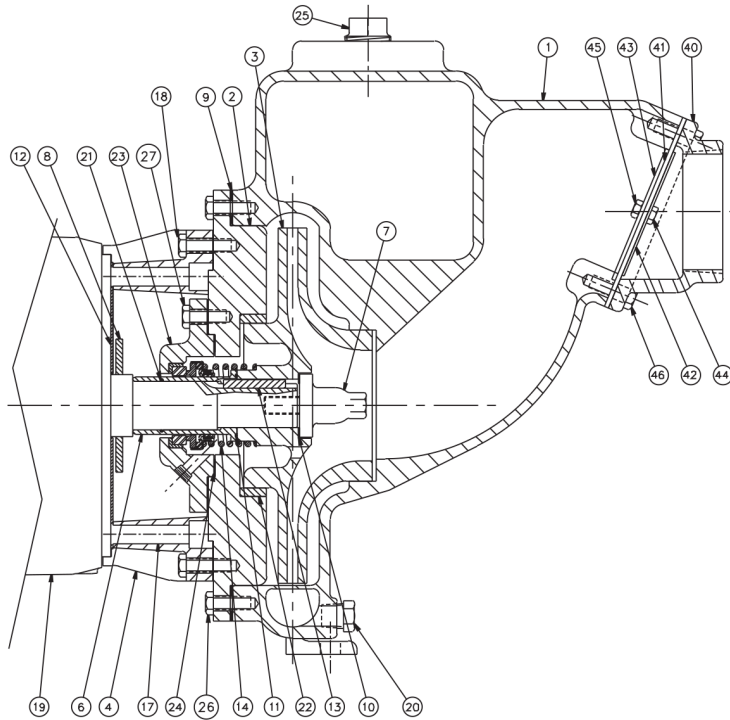
Ref #	Component
1	Casing
2	Cover
3	Impeller
4	Adapter
6	Shaft Sleeve
7	Impeller Screw
8	Slinger
9	Gasket, Casing
10	Gasket, Impeller Screw
11	Gasket Or O-Ring, Shaft Sleeve
12	Splashplate
13	Key, Impeller
14	Seal Kit
17	Capscrew (Motor/Adapter)
18	Capscrew (Casing/Adapter)
20	Plug, Drain
21*	O-Ring, Shaft Sleeve (Shaft/Sleeve)
22	Wear Ring
23	Stuffing Box
24	Gasket, Stuffing Box
25	Plug, Fill
26	Capscrew (Casing/Cover)
27	Capscrew (Cover/Stuffing Box)
40	Flapper Body
41	Flapper
42	Disc, Flapper, Round
43	Disc, Flapper, Flat Edge
44	Capscrew (Flapper Disc)
45	Locknut, (Flapper Disc)
46	Capscrew (Casing/Flapper Body)

\* RCH2 Only

**Exploded View**

*Optional Items Shown in ITALICS*

Ref #	Component Item No.	Description	Qty Per
41	GX8108441	FLAPPER,33/337/3310,3IN RC2 RCH2	1
42	SX8108452	DISK,3IN,FLAPPER VLV-SM RC2	1
43	SX8108451	DISK,3IN,FLAPPER VLV,LG RC2	1
44	GX5079603	CAPSCRW,HX,1/4-20X5/8,18-8SS HX HD	1
45	GX5079602	LOCKNUT,1/4-20,18-8SS RC2 RCH2	1
46	GX5077100	CAPSCRW,HX,3/8-16X1,18-8SS HX HD	4



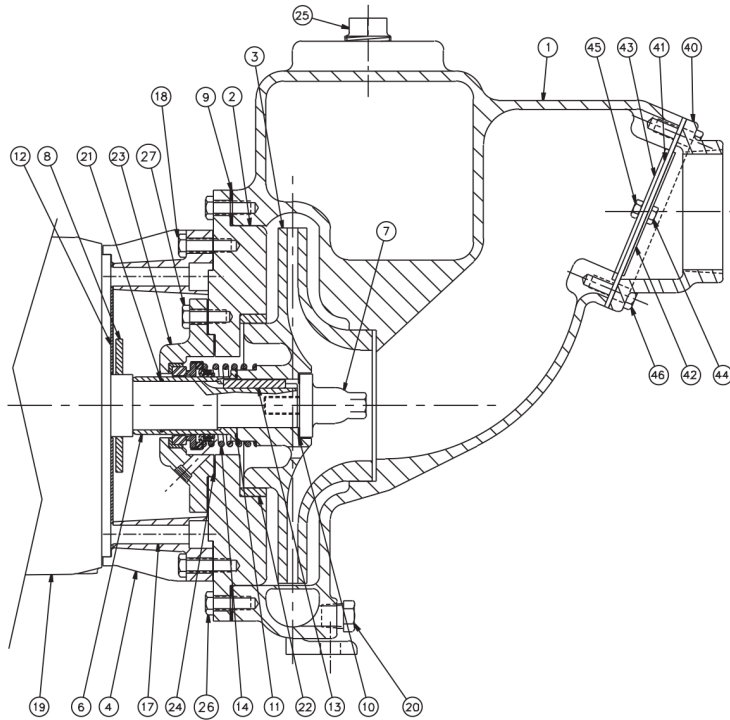
Ref #	Component
1	Casing
2	Cover
3	Impeller
4	Adapter
6	Shaft Sleeve
7	Impeller Screw
8	Slinger
9	Gasket, Casing
10	Gasket, Impeller Screw
11	Gasket Or O-Ring, Shaft Sleeve
12	Splashplate
13	Key, Impeller
14	Seal Kit
17	Capscrew (Motor/Adapter)
18	Capscrew (Casing/Adapter)
20	Plug, Drain
21*	O-Ring, Shaft Sleeve (Shaft/Sleeve)
22	Wear Ring
23	Stuffing Box
24	Gasket, Stuffing Box
25	Plug, Fill
26	Capscrew (Casing/Cover)
27	Capscrew (Cover/Stuffing Box)
40	Flapper Body
41	Flapper
42	Disc, Flapper, Round
43	Disc, Flapper, Flat Edge
44	Capscrew (Flapper Disc)
45	Locknut, (Flapper Disc)
46	Capscrew (Casing/Flapper Body)

\* RCH2 Only

**Exploded View**

*Optional Items Shown in ITALICS*

Ref #	Component Item No.	Description	Qty Per
1	BV8403191	CASING,3X3X7,SELF PRIME	1
2	BC8301251	COVER,3X2-1/2,BZ ZC2	1
3	BI8200281	IMPELLER,3X2-1/2,BZ ZC2	1
4	GX8400951	ADAPTER,100 JM FRAME ZC2	1
	<i>SX8400952</i>	<i>ADAPTER,100 JM FRAME,SS ZC2</i>	1
6	BX8103722	SLEEVE,SHFT,BZ ZC2	1
7	BI8101271	SCREW,IMP,BZ EC/ZC2	1
8	GX5042301	SLINGER,1-7/32X3-1/4X5/32 80 DUR (180JM-210JM)	1
9	GX5041200	GASKET,7-47/64X7-1/8X 1/32 ,N-8090	1
10	GX5040500	GASKET,IMP SCRW,7/8X1-3/8X1/32	1
11	GX5098300	O-RING,T21,1-1/4,BUNA,SLV	1
	<i>GX5098301</i>	<i>O-RING,T21,1-1/4,EPDM,SLV (1-1/4 X 1-3/8 X 1/16)</i>	1
	<i>GX5098302</i>	<i>O-RING,43/252/325,VIT DC3</i>	1
12	GX5091600	SPLASHPLATE,EC2/KC2/RC2/ZC2,SS FR143-184	1
13	GX5051300	KEY,IMP, .187SQX1.5 EC KC RC ZC	1
14	GS8110250	KIT,1-1/4,3X3,T21,CE/CA/BU RC2	1
	<i>GS8110255-316SS</i>	<i>KIT,1-1/4,337,T21,TC/SC/BU 316SS METALLICS, RC2</i>	1
17	GX5077100	CAPSCRW,HX,3/8-16X1,18-8SS HX HD	4
18	GX5077100	CAPSCRW,HX,3/8-16X1,18-8SS HX HD	8
20	BX5075500	PLUG,PIPE,3/8IN,BZ RC2 ZC2	1
25	BX5107200	PLUG,PIPE,1IN,BZ RC2	1
40	BX8304271	VALVE,FLAPPER,BDY,3X3,BZ RCH2	1
41	GX8108441	FLAPPER,33/337/3310,3IN RC2 RCH2	1
42	SX8108452	DISK,3IN,FLAPPER VLV-SM RC2	1
43	SX8108451	DISK,3IN,FLAPPER VLV,LG RC2	1
44	GX5079602	LOCKNUT,1/4-20,18-8SS RC2 RCH2	1
45	GX5079603	CAPSCRW,HX,1/4-20X5/8,18-8SS HX HD	1



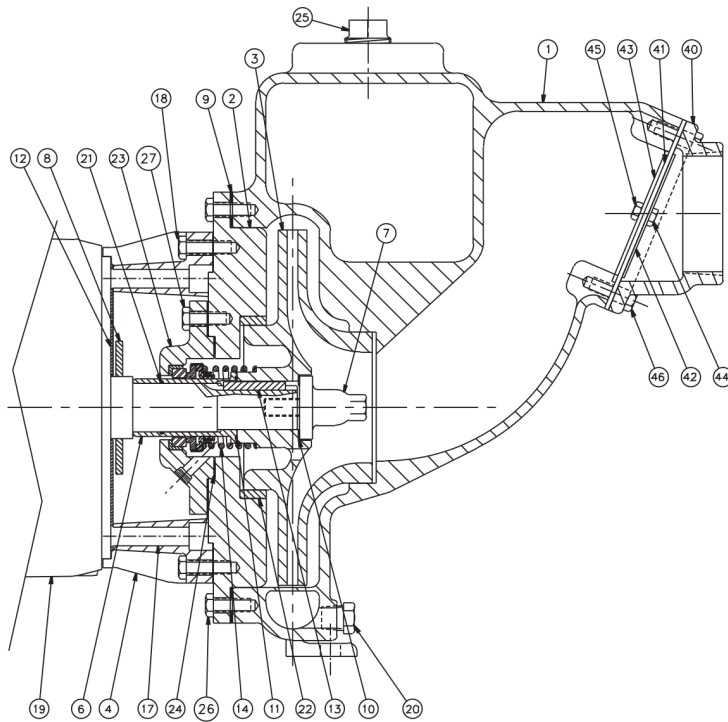
Ref #	Component
1	Casing
2	Cover
3	Impeller
4	Adapter
6	Shaft Sleeve
7	Impeller Screw
8	Slinger
9	Gasket, Casing
10	Gasket, Impeller Screw
11	Gasket Or O-Ring, Shaft Sleeve
12	Splashplate
13	Key, Impeller
14	Seal Kit
17	Capscrew (Motor/Adapter)
18	Capscrew (Casing/Adapter)
20	Plug, Drain
21*	O-Ring, Shaft Sleeve (Shaft/Sleeve)
22	Wear Ring
23	Stuffing Box
24	Gasket, Stuffing Box
25	Plug, Fill
26	Capscrew (Casing/Cover)
27	Capscrew (Cover/Stuffing Box)
40	Flapper Body
41	Flapper
42	Disc, Flapper, Round
43	Disc, Flapper, Flat Edge
44	Capscrew (Flapper Disc)
45	Locknut, (Flapper Disc)
46	Capscrew (Casing/Flapper Body)

\* RCH2 Only

**Exploded View**

*Optional Items Shown in ITALICS*

Ref #	Component Item No.	Description	Qty Per
46	GX5077100	CAPSCRW,HX,3/8-16X1,18-8SS HX HD	4



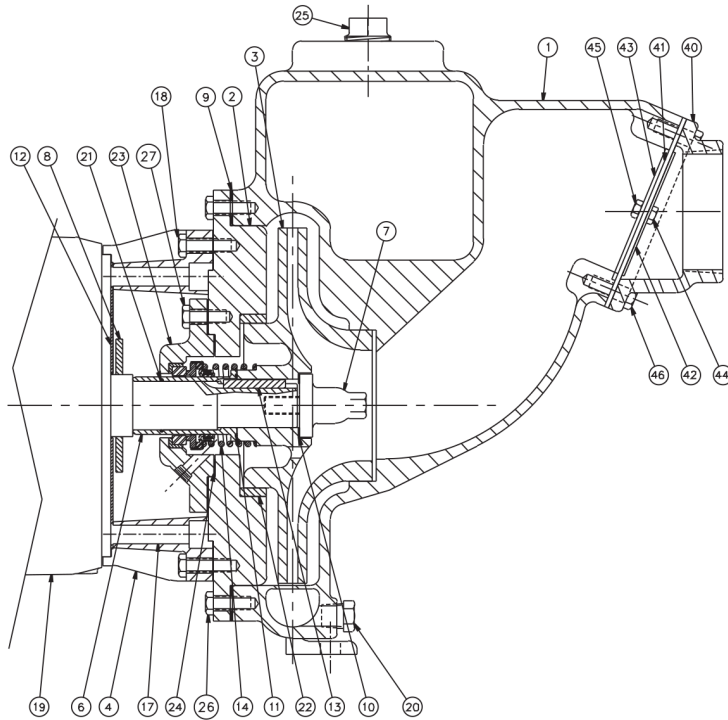
Ref #	Component
1	Casing
2	Cover
3	Impeller
4	Adapter
6	Shaft Sleeve
7	Impeller Screw
8	Slinger
9	Gasket, Casing
10	Gasket, Impeller Screw
11	Gasket Or O-Ring, Shaft Sleeve
12	Splashplate
13	Key, Impeller
14	Seal Kit
17	Capscrew (Motor/Adapter)
18	Capscrew (Casing/Adapter)
20	Plug, Drain
21*	O-Ring, Shaft Sleeve (Shaft/Sleeve)
22	Wear Ring
23	Stuffing Box
24	Gasket, Stuffing Box
25	Plug, Fill
26	Capscrew (Casing/Cover)
27	Capscrew (Cover/Stuffing Box)
40	Flapper Body
41	Flapper
42	Disc, Flapper, Round
43	Disc, Flapper, Flat Edge
44	Capscrew (Flapper Disc)
45	Locknut, (Flapper Disc)
46	Capscrew (Casing/Flapper Body)

\* RCH2 Only

**Exploded View**

*Optional Items Shown in ITALICS*

Ref #	Component Item No.	Description	Qty Per
1	BV8402891	CASING,3X3X10,SELF PRIME,MOTOR	1
2	BC8402261	COVER,32/43L/3310,JM,BZ ZC2 ZCH2 SGL SEAL	1
3	BI8303471	IMPELLER,3X2,BZ,T21 SEAL ZCH2	1
4	GX8401251	ADAPTER,250 JM FRAME ZCH2	1
	<i>SX8401252</i>	<i>ADAPTER,250 JM FRAME,SS INS ZCH2</i>	<i>1</i>
6	BX8107641	SLEEVE,SHFT,4X3L,BZ,JM FRM ZCH2	1
7	BI8107731	SCREW,IMP,ZCH2 4X3L,BZ ZCH2	1
8	GX5098700	SLINGER,1-23/32X3-3/4X 3/16 ZCH2	1
9	GX5106200	GASKET,3X2,CVR,CASING 10-1/8X 12-1/8 X 1/16 N-8090	1
10	GX5041600	GASKET,1-1/4X1-3/4X1/32 1/4 KEYSLOT,SLV/IMP	1
11	GX5041400	GASKET,IMP SCRW,1-1/4X1-13/16 X1/32	1
12	GX5091400	SPLASHPLATE,EC2/KC2/RC2/ZC2,SS FR213-256	1
13	GX5051200	KEY,IMPLR/SLV,2.OX.25X.25 304-SS	1
14	GS8108790	KIT,1-5/8,3X3,CE/CA/BU RCH2	1
	<i>GS8108790-316SS</i>	<i>KIT,1-5/8,3X3,CE/CA/BU,316SS MET RCH2</i>	<i>1</i>
	<i>GS8108710</i>	<i>KIT,1-5/8,3X3,SC/CA/VI RCH2</i>	<i>1</i>
	<i>GS8111190-316SS</i>	<i>KIT,1-5/8,3X3,TC/SC/BU,316SS MET RCH2</i>	<i>1</i>
17	GX5077500	CAPSCRW,SH,1/2-13X3,BLK OX SCKT HD	4
18	GX5077100	CAPSCRW,HX,3/8-16X1,18-8SS HX HD	8
21	GX5099300	O-RING,1-3/8X1-1/2X1/16,BUNA SLEEVE	1
	<i>GX5099301</i>	<i>O-RING,T1 T21,1-5/8,EPDM,SLV (1-3/8 X 1-1/2 X 1/16)</i>	<i>1</i>
	<i>GX5099302</i>	<i>O-RING,33/43,VIT,FDA COMPL DCH3</i>	<i>1</i>
22	BW8107681	RING,WEAR,3X2 4X3 L ,BZ,STUFF BX ZC2 ZCH2	1
23	BX8204231	STUFFING BOX,4X3L,BZ,JM,T21/T1 ZCH2	1
24	GX5041900	GASKET,4X3X1/32,N-8090,STFBX STUFFING BOX	1
25	BX5107200	PLUG,PIPE,1IN,BZ RC2	1
26	GX5077100	CAPSCRW,HX,3/8-16X1,18-8SS HX HD	12



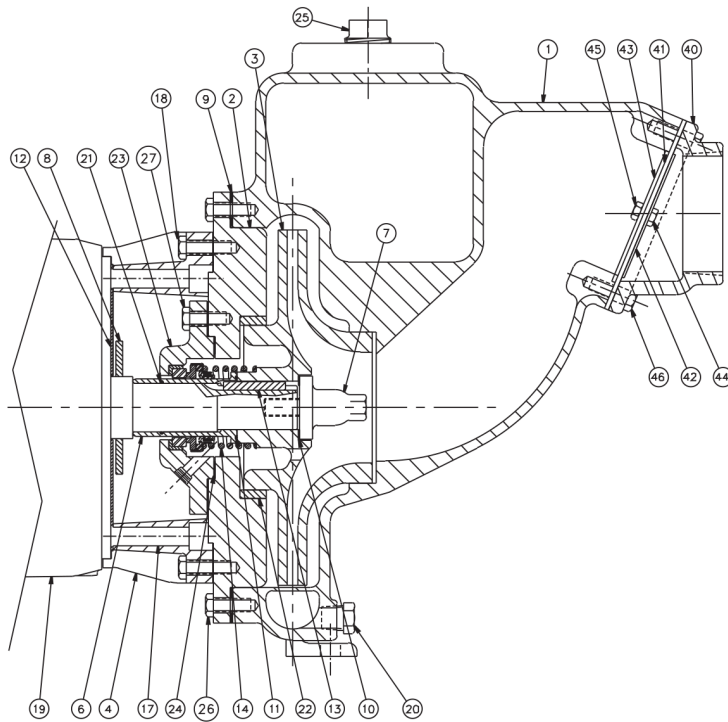
Ref #	Component
1	Casing
2	Cover
3	Impeller
4	Adapter
6	Shaft Sleeve
7	Impeller Screw
8	Slinger
9	Gasket, Casing
10	Gasket, Impeller Screw
11	Gasket Or O-Ring, Shaft Sleeve
12	Splashplate
13	Key, Impeller
14	Seal Kit
17	Capscrew (Motor/Adapter)
18	Capscrew (Casing/Adapter)
20	Plug, Drain
21*	O-Ring, Shaft Sleeve (Shaft/Sleeve)
22	Wear Ring
23	Stuffing Box
24	Gasket, Stuffing Box
25	Plug, Fill
26	Capscrew (Casing/Cover)
27	Capscrew (Cover/Stuffing Box)
40	Flapper Body
41	Flapper
42	Disc, Flapper, Round
43	Disc, Flapper, Flat Edge
44	Capscrew (Flapper Disc)
45	Locknut, (Flapper Disc)
46	Capscrew (Casing/Flapper Body)

\* RCH2 Only

**Exploded View**

*Optional Items Shown in ITALICS*

Ref #	Component Item No.	Description	Qty Per
27	GX5077100	CAPSCRW,HX,3/8-16X1,18-8SS HX HD	4
40	BX8304271	VALVE,FLAPPER,BDY,3X3,BZ RCH2	1
41	GX8108441	FLAPPER,33/337/3310,3IN RC2 RCH2	1
42	SX8108452	DISK,3IN,FLAPPER VLV-SM RC2	1
43	SX8108451	DISK,3IN,FLAPPER VLV,LG RC2	1
44	GX5079600	CAPSCRW,HX,1/4-20X1/2,18-8SS HX HD	1
45	GX5079602	LOCKNUT,1/4-20,18-8SS RC2 RCH2	1
46	GX5077100	CAPSCRW,HX,3/8-16X1,18-8SS HX HD	4



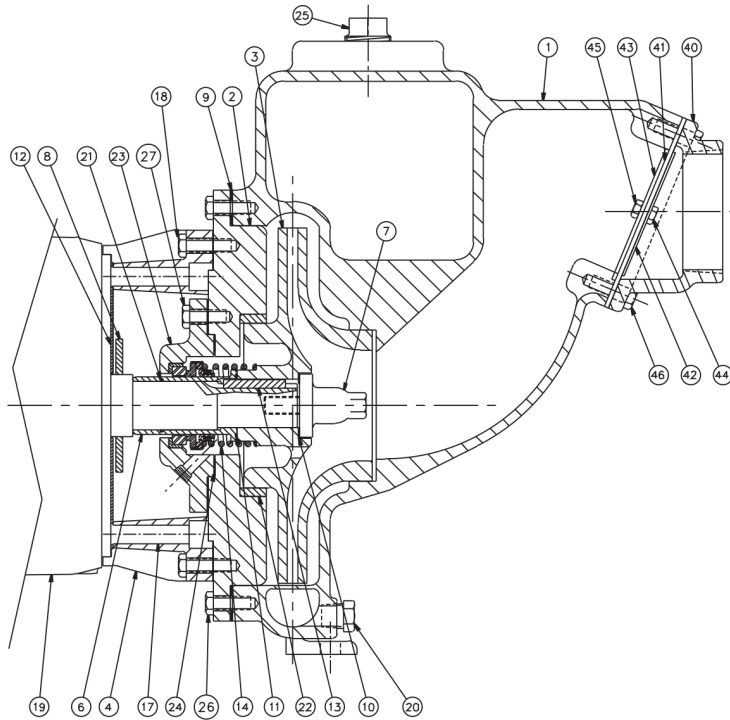
Ref #	Component
1	Casing
2	Cover
3	Impeller
4	Adapter
6	Shaft Sleeve
7	Impeller Screw
8	Slinger
9	Gasket, Casing
10	Gasket, Impeller Screw
11	Gasket Or O-Ring, Shaft Sleeve
12	Splashplate
13	Key, Impeller
14	Seal Kit
17	Capscrew (Motor/Adapter)
18	Capscrew (Casing/Adapter)
20	Plug, Drain
21*	O-Ring, Shaft Sleeve (Shaft/Sleeve)
22	Wear Ring
23	Stuffing Box
24	Gasket, Stuffing Box
25	Plug, Fill
26	Capscrew (Casing/Cover)
27	Capscrew (Cover/Stuffing Box)
40	Flapper Body
41	Flapper
42	Disc, Flapper, Round
43	Disc, Flapper, Flat Edge
44	Capscrew (Flapper Disc)
45	Locknut, (Flapper Disc)
46	Capscrew (Casing/Flapper Body)

\* RCH2 Only

**Exploded View**

*Optional Items Shown in ITALICS*

Ref #	Component Item No.	Description	Qty Per
1	BV8402891	CASING,3X3X10,SELF PRIME,MOTOR	1
2	BC8402261	COVER,32/43L/3310,JM,BZ ZC2 ZCH2 SGL SEAL	1
3	BI8303471	IMPELLER,3X2,BZ,T21 SEAL ZCH2	1
4	GX8401361	ADAPTER,280 JM FRAME ZCH2	1
6	BX8107641	SLEEVE,SHFT,4X3L,BZ,JM FRM ZCH2	1
7	BI8107731	SCREW,IMP,ZCH2 4X3L,BZ ZCH2	1
8	GX5098700	SLINGER,1-23/32X3-3/4X 3/16 ZCH2	1
9	GX5106200	GASKET,3X2,CVR,CASING 10-1/8X 12-1/8 X 1/16 N-8090	1
10	GX5041600	GASKET,1-1/4X1-3/4X1/321/4 KEYSLOT,SLV/IMP	1
11	GX5041400	GASKET,IMP SCRW,1-1/4X1-13/16 X1/32	1
12	SX8101072	SPLASHPLATE,280JM FRM ZCH2	1
13	GX5051200	KEY,IMPLR/SLV,2.0X.25X.25 304-SS	1
14	GS8108790	KIT,1-5/8,3X3,CE/CA/BU RCH2	1
	<i>GS8108790-316SS</i>	<i>KIT,1-5/8,3X3,CE/CA/BU,316SS MET RCH2</i>	<i>1</i>
	<i>GS8108710</i>	<i>KIT,1-5/8,3X3,SC/CA/VI RCH2</i>	<i>1</i>
	<i>GS8111190-316SS</i>	<i>KIT,1-5/8,3X3,TC/SC/BU,316SS MET RCH2</i>	<i>1</i>
17	GX5076700	CAPSCRW,HX,5/8-11X1-1/2,18-8SS HX HD	4
18	GX5077100	CAPSCRW,HX,3/8-16X1,18-8SS HX HD	4
21	GX5099300	O-RING,1-3/8X1-1/2X1/16,BUNA SLEEVE	1
	<i>GX5099301</i>	<i>O-RING,T1 T21,1-5/8,EPDM,SLV (1-3/8 X 1-1/2 X 1/16)</i>	<i>1</i>
	<i>GX5099302</i>	<i>O-RING,33/43,VIT,FDA COMPL DCH3</i>	<i>1</i>
22	BW8107681	RING,WEAR,3X2 4X3 L ,BZ,STUFF BX ZC2 ZCH2	1
23	BX8204231	STUFFING BOX,4X3L,BZ,JM,T21/T1 ZCH2	1
24	GX5041900	GASKET,4X3X1/32,N-8090,STFBX STUFFING BOX	1
25	BX5107200	PLUG,PIPE,1IN,BZ RC2	1
26	GX5077100	CAPSCRW,HX,3/8-16X1,18-8SS HX HD	8
27	GX5077100	CAPSCRW,HX,3/8-16X1,18-8SS HX HD	12



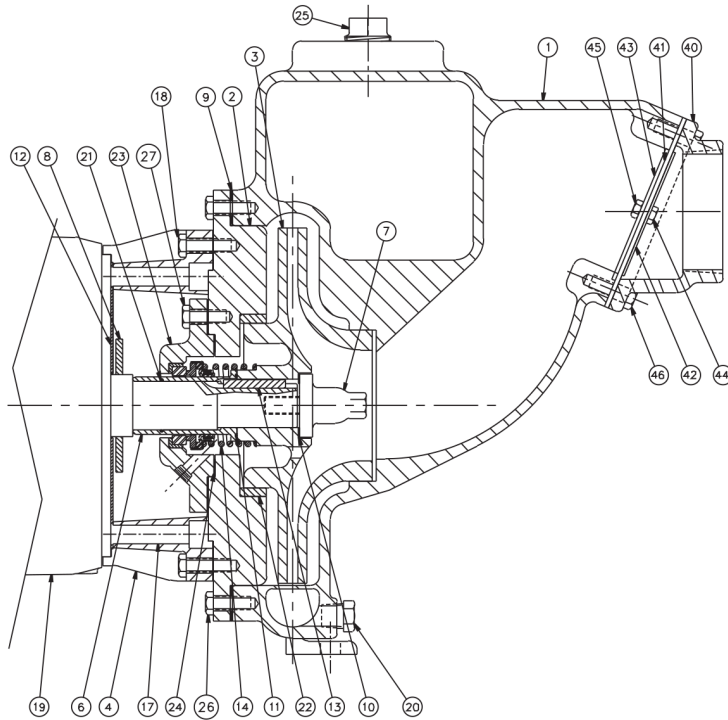
Ref #	Component
1	Casing
2	Cover
3	Impeller
4	Adapter
6	Shaft Sleeve
7	Impeller Screw
8	Slinger
9	Gasket, Casing
10	Gasket, Impeller Screw
11	Gasket Or O-Ring, Shaft Sleeve
12	Splashplate
13	Key, Impeller
14	Seal Kit
17	Capscrew (Motor/Adapter)
18	Capscrew (Casing/Adapter)
20	Plug, Drain
21*	O-Ring, Shaft Sleeve (Shaft/Sleeve)
22	Wear Ring
23	Stuffing Box
24	Gasket, Stuffing Box
25	Plug, Fill
26	Capscrew (Casing/Cover)
27	Capscrew (Cover/Stuffing Box)
40	Flapper Body
41	Flapper
42	Disc, Flapper, Round
43	Disc, Flapper, Flat Edge
44	Capscrew (Flapper Disc)
45	Locknut, (Flapper Disc)
46	Capscrew (Casing/Flapper Body)

\* RCH2 Only

**Exploded View**

*Optional Items Shown in ITALICS*

Ref #	Component Item No.	Description	Qty Per
40	<b>BX8304271</b>	<b>VALVE,FLAPPER,BDY,3X3,BZ RCH2</b>	<b>1</b>
41	<b>GX8108441</b>	<b>FLAPPER,33/337/3310,3IN RC2 RCH2</b>	<b>1</b>
42	<b>SX8108452</b>	<b>DISK,3IN,FLAPPER VLV-SM RC2</b>	<b>1</b>
43	<b>SX8108451</b>	<b>DISK,3IN,FLAPPER VLV,LG RC2</b>	<b>1</b>
44	<b>GX5079600</b>	<b>CAPSCRW,HX,1/4-20X1/2,18-8SS HX HD</b>	<b>1</b>
45	<b>GX5079602</b>	<b>LOCKNUT,1/4-20,18-8SS RC2 RCH2</b>	<b>1</b>
46	<b>GX5077100</b>	<b>CAPSCRW,HX,3/8-16X1,18-8SS HX HD</b>	<b>4</b>



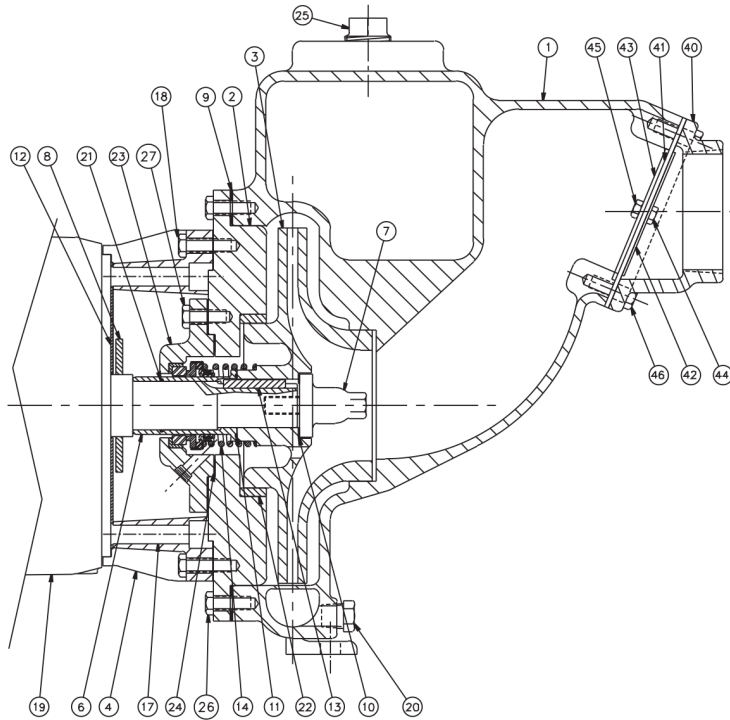
Ref #	Component
1	Casing
2	Cover
3	Impeller
4	Adapter
6	Shaft Sleeve
7	Impeller Screw
8	Slinger
9	Gasket, Casing
10	Gasket, Impeller Screw
11	Gasket Or O-Ring, Shaft Sleeve
12	Splashplate
13	Key, Impeller
14	Seal Kit
17	Capscrew (Motor/Adapter)
18	Capscrew (Casing/Adapter)
20	Plug, Drain
21*	O-Ring, Shaft Sleeve (Shaft/Sleeve)
22	Wear Ring
23	Stuffing Box
24	Gasket, Stuffing Box
25	Plug, Fill
26	Capscrew (Casing/Cover)
27	Capscrew (Cover/Stuffing Box)
40	Flapper Body
41	Flapper
42	Disc, Flapper, Round
43	Disc, Flapper, Flat Edge
44	Capscrew (Flapper Disc)
45	Locknut, (Flapper Disc)
46	Capscrew (Casing/Flapper Body)

\* RCH2 Only

**Exploded View**

*Optional Items Shown in ITALICS*

Ref #	Component Item No.	Description	Qty Per
1	BV8403191	CASING,3X3X7,SELF PRIME	1
2	BC8301731	COVER,3X2-1/2,BZ ZCH2	1
3	BI8203011	IMPELLER,3X2-1/2,BZ ZCH2	1
4	GX8401251	ADAPTER,250 JM FRAME ZCH2	1
	<i>SX8401252</i>	<i>ADAPTER,250 JM FRAME,SS NS ZCH2</i>	<i>1</i>
6	BX8104422	SLEEVE,SHFT,BZ ZCH2	1
7	BI8102721	SCREW,22/43/66/325/1515,IMP,BZ ECH/ZCH	1
8	GX5098700	SLINGER,1-23/32X3-3/4X 3/16 ZCH2	1
9	GX5041200	GASKET,7-47/64X7-1/8X 1/32 ,N-8090	1
10	GX5041400	GASKET,IMP SCR W,1-1/4X1-13/16 X1/32	1
11	GX5099800	O-RING,1-5/8X1-3/4X1/16,BUNA SLEEVE	1
	<i>GX5099802</i>	<i>O-RING,T2 T21,1-5/8,EPDM,SLV (1-5/8 X 1-3/4 X 1/16)</i>	<i>1</i>
	<i>GX5099801</i>	<i>O-RING,33/43,VIT,FDA COMPL DCH3</i>	<i>1</i>
12	GX5091400	SPLASHPLATE,EC2/KC2/RC2/ZC2,SS FR213-256	1
13	GX5051200	KEY,IMPLR/SLV,2.0X.25X.25 304-SS	1
14	GS8111060	KIT,1-5/8,3X3X7,CE/CA/BU RCH2	1
17	GX5077500	CAPSCRW,SH,1/2-13X3,BLK OX SCKT HD	4
18	GX5077200	CAPSCRW,HX,3/8-16X1-1/4,18-8SS HX HD	8
20	BX5075500	PLUG,PIPE,3/8IN,BZ RC2 ZC2	1
21	GX5099300	O-RING,1-3/8X1-1/2X1/16,BUNA SLEEVE	1
	<i>GX5099301</i>	<i>O-RING,T1 T21,1-5/8,EPDM,SLV (1-3/8 X 1-1/2 X 1/16)</i>	<i>1</i>
	<i>GX5099302</i>	<i>O-RING,33/43,VIT,FDA COMPL DCH3</i>	<i>1</i>
25	BX5107200	PLUG,PIPE,1IN,BZ RC2	1
40	BX8304271	VALVE,FLAPPER,BDY,3X3,BZ RCH2	1
41	GX8108441	FLAPPER,33/337/3310,3IN RC2 RCH2	1
42	SX8108452	DISK,3IN,FLAPPER VLV-SM RC2	1
43	SX8108451	DISK,3IN,FLAPPER VLV,LG RC2	1



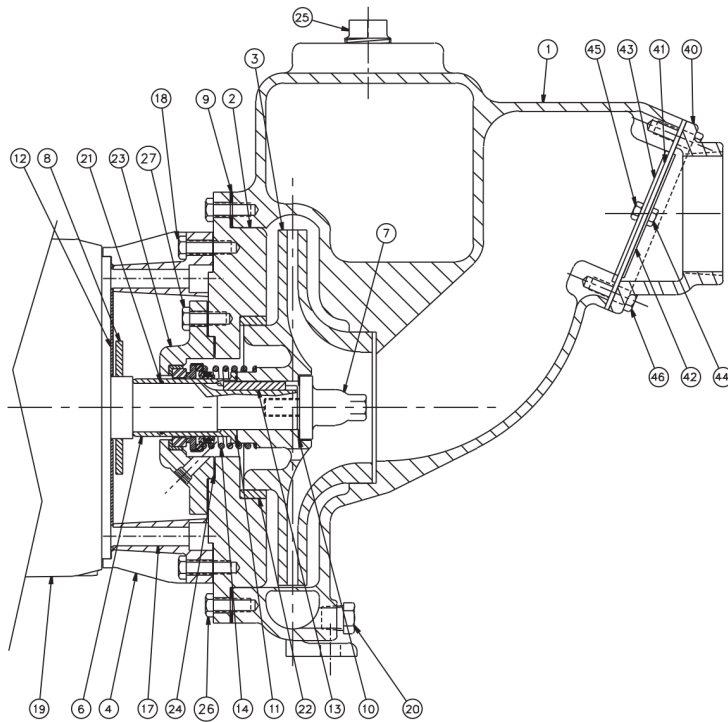
Ref #	Component
1	Casing
2	Cover
3	Impeller
4	Adapter
6	Shaft Sleeve
7	Impeller Screw
8	Slinger
9	Gasket, Casing
10	Gasket, Impeller Screw
11	Gasket Or O-Ring, Shaft Sleeve
12	Splashplate
13	Key, Impeller
14	Seal Kit
17	Capscrew (Motor/Adapter)
18	Capscrew (Casing/Adapter)
20	Plug, Drain
21*	O-Ring, Shaft Sleeve (Shaft/Sleeve)
22	Wear Ring
23	Stuffing Box
24	Gasket, Stuffing Box
25	Plug, Fill
26	Capscrew (Casing/Cover)
27	Capscrew (Cover/Stuffing Box)
40	Flapper Body
41	Flapper
42	Disc, Flapper, Round
43	Disc, Flapper, Flat Edge
44	Capscrew (Flapper Disc)
45	Locknut, (Flapper Disc)
46	Capscrew (Casing/Flapper Body)

\* RCH2 Only

**Exploded View**

*Optional Items Shown in ITALICS*

Ref #	Component Item No.	Description	Qty Per
44	GX5079603	CAPSCRW,HX,1/4-20X5/8,18-8SS HX HD	1
45	GX5079602	LOCKNUT,1/4-20,18-8SS RC2 RCH2	1
46	GX5077100	CAPSCRW,HX,3/8-16X1,18-8SS HX HD	4



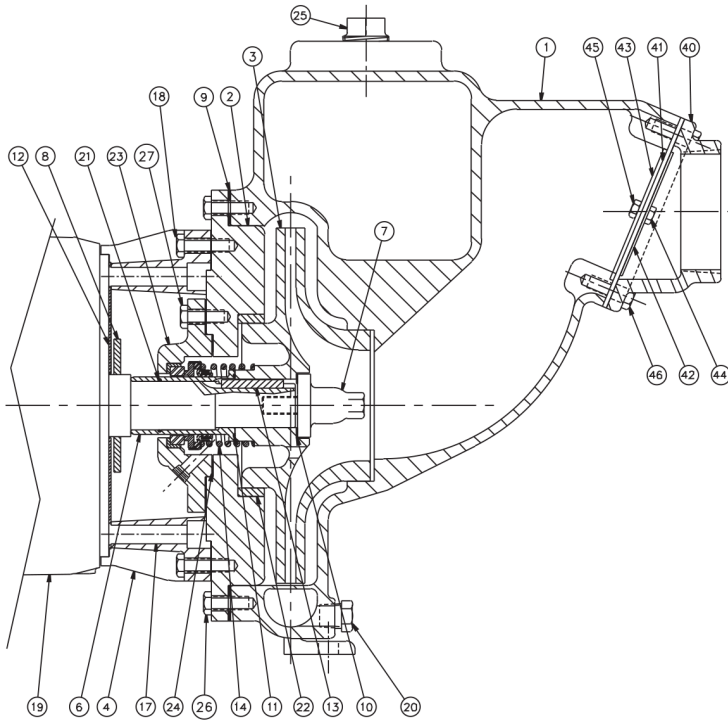
Ref #	Component
1	Casing
2	Cover
3	Impeller
4	Adapter
6	Shaft Sleeve
7	Impeller Screw
8	Slinger
9	Gasket, Casing
10	Gasket, Impeller Screw
11	Gasket Or O-Ring, Shaft Sleeve
12	Splashplate
13	Key, Impeller
14	Seal Kit
17	Capscrew (Motor/Adapter)
18	Capscrew (Casing/Adapter)
20	Plug, Drain
21*	O-Ring, Shaft Sleeve (Shaft/Sleeve)
22	Wear Ring
23	Stuffing Box
24	Gasket, Stuffing Box
25	Plug, Fill
26	Capscrew (Casing/Cover)
27	Capscrew (Cover/Stuffing Box)
40	Flapper Body
41	Flapper
42	Disc, Flapper, Round
43	Disc, Flapper, Flat Edge
44	Capscrew (Flapper Disc)
45	Locknut, (Flapper Disc)
46	Capscrew (Casing/Flapper Body)

\* RCH2 Only

**Exploded View**

*Optional Items Shown in ITALICS*

Ref #	Component Item No.	Description	Qty Per
1	BV8403191	CASING,3X3X7,SELF PRIME	1
2	BC8301731	COVER,3X2-1/2,BZ ZCH2	1
3	BI8203011	IMPELLER,3X2-1/2,BZ ZCH2	1
4	GX8401361	ADAPTER,280 JM FRAME ZCH2	1
6	BX8104422	SLEEVE,SHFT,BZ ZCH2	1
7	BI8102721	SCREW,22/43/66/325/1515,IMP,BZ ECH/ZCH	1
8	GX5098700	SLINGER,1-23/32X3-3/4X 3/16 ZCH2	1
9	GX5041200	GASKET,7-47/64X7-1/8X 1/32 ,N-8090	1
10	GX5041400	GASKET,IMP SCRW,1-1/4X1-13/16 X1/32	1
11	GX5099800	O-RING,1-5/8X1-3/4X1/16,BUNA SLEEVE	1
	<i>GX5099802</i>	<i>O-RING,T2 T21,1-5/8,EPDM,SLV (1-5/8 X 1-3/4 X 1/16)</i>	<i>1</i>
	<i>GX5099801</i>	<i>O-RING,33/43,VIT,FDA COMPL DCH3</i>	<i>1</i>
12	SX8101072	SPLASHPLATE,280JM FRM ZCH2	1
13	GX5051200	KEY,IMPLR/SLV,2.0X.25X.25 304-SS	1
14	GS8111060	KIT,1-5/8,3X3X7,CE/CA/BU RCH2	1
17	GX5076700	CAPSCRW,HX,5/8-11X1-1/2,18-8SS HX HD	4
18	GX5077200	CAPSCRW,HX,3/8-16X1-1/4,18-8SS HX HD	8
20	BX5075500	PLUG,PIPE,3/8IN,BZ RC2 ZC2	1
21	GX5099300	O-RING,1-3/8X1-1/2X1/16,BUNA SLEEVE	1
	<i>GX5099301</i>	<i>O-RING,T1 T21,1-5/8,EPDM,SLV (1-3/8 X 1-1/2 X 1/16)</i>	<i>1</i>
	<i>GX5099302</i>	<i>O-RING,33/43,VIT,FDA COMPL DCH3</i>	<i>1</i>
25	BX5107200	PLUG,PIPE,1IN,BZ RC2	1
40	BX8304271	VALVE,FLAPPER,BDY,3X3,BZ RCH2	1
41	GX8108441	FLAPPER,33/337/3310,3IN RC2 RCH2	1
42	SX8108452	DISK,3IN,FLAPPER VLV-SM RC2	1
43	SX8108451	DISK,3IN,FLAPPER VLV,LG RC2	1
44	GX5079603	CAPSCRW,HX,1/4-20X5/8,18-8SS HX HD	1



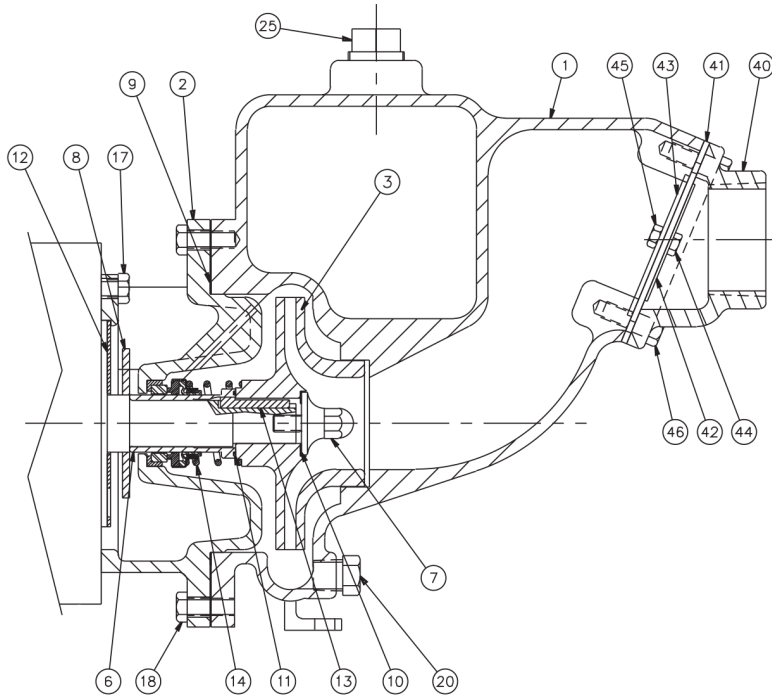
Ref #	Component
1	Casing
2	Cover
3	Impeller
4	Adapter
6	Shaft Sleeve
7	Impeller Screw
8	Slinger
9	Gasket, Casing
10	Gasket, Impeller Screw
11	Gasket Or O-Ring, Shaft Sleeve
12	Splashplate
13	Key, Impeller
14	Seal Kit
17	Capscrew (Motor/Adapter)
18	Capscrew (Casing/Adapter)
20	Plug, Drain
21*	O-Ring, Shaft Sleeve (Shaft/Sleeve)
22	Wear Ring
23	Stuffing Box
24	Gasket, Stuffing Box
25	Plug, Fill
26	Capscrew (Casing/Cover)
27	Capscrew (Cover/Stuffing Box)
40	Flapper Body
41	Flapper
42	Disc, Flapper, Round
43	Disc, Flapper, Flat Edge
44	Capscrew (Flapper Disc)
45	Locknut, (Flapper Disc)
46	Capscrew (Casing/Flapper Body)

\* RCH2 Only

**Exploded View**

*Optional Items Shown in ITALICS*

Ref #	Component Item No.	Description	Qty Per
45	GX5079602	LOCKNUT,1/4-20,18-8SS RC2 RCH2	1
46	GX5077100	CAPSCRW,HX,3/8-16X1,18-8SS HX HD	4

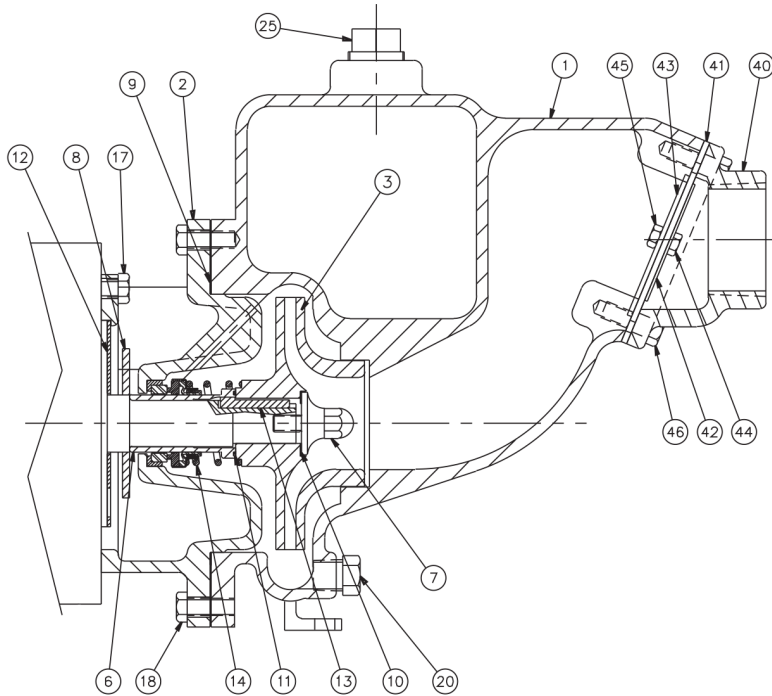


Ref #	Component
1	Casing
2	Cover
3	Impeller
6	Shaft Sleeve
7	Impeller Screw
8	Slinger
9	Gasket, Casing
10	Gasket, Impeller Screw
11	O-Ring, Shaft Sleeve (Sleeve/Impeller)
12	Splashplate
13	Key, Impeller
14	Seal Kit
17	Capscrew (Motor/Adapter)
18	Capscrew (Casing/Adapter)
20	Plug, Drain
25	Plug, Fill
40	Flapper Body
41	Flapper
42	Disc, Flapper, Round
43	Disc, Flapper, Flat Edge
44	Capscrew (Flapper Disc)
45	Locknut, (Flapper Disc)
46	Capscrew (Casing/Flapper Body)

**Exploded View**

*Optional Items Shown in ITALICS*

Ref #	Component Item No.	Description	Qty Per
1	SV8402682	CASING,2X2,A/B,SS,SELF PRIME RC2	1
2	SC8402702	COVER,2X2,SS,SELF PRIMR RC2	1
3	SI8201441	IMPELLER,2X1-1/2,SS ZC2	1
6	SX8103721	SLEEVE,SHFT,SS ZC2	1
7	SI8107270	SCREW,IMP,SS DC2 EC2 KC2 MC3 ZC2	1
8	GX5042301	SLINGER,1-7/32X3-1/4X5/32 80 DUR (180JM-210JM)	1
9	GX5107100	GASKET,2X2,SLF PRM,N-8090 6-11/64X5-5/8X1/32	1
10	GX5040500	GASKET,IMP SCRW,7/8X1-3/8X1/32	1
11	GX5098300	O-RING,T21,1-1/4,BUNA,SLV	1
	<i>GX5098301</i>	<i>O-RING,T21,1-1/4,EPDM,SLV (1-1/4 X 1-3/8 X 1/16)</i>	<i>1</i>
	<i>GX5098302</i>	<i>O-RING,43/252/325,VIT DC3</i>	<i>1</i>
12	GX5091600	SPLASHPLATE,EC2/KC2/RC2/ZC2,SS FR143-184	1
13	GX5051300	KEY,IMP, .187SQX1.5 EC KC RC ZC	1
14	GS8109040	KIT,1-1/4,T21,CE/CA/BU RC2	1
	<i>GS8108990</i>	<i>KIT,1-1/4,T21,SC/CAVI RC2</i>	<i>1</i>
17	GX5077100	CAPSCRW,HX,3/8-16X1,18-8SS HX HD	4
18	P1GX30-50	CAPSCRW,HX,3/8-16X3/4,18-8SS HEX HD	8
20	GX5075100	PLUG,PIPE,1/8IN,SS RC2 ZC2 ZCH2	1
25	SX5107201	PLUG,PIPE,HEX HD,1IN,316SS RC2	1
40	SX8304182	VALVE,CHK,BDY,2X2,SS RC2	1
41	GX8108343	FLAPPER,22,2IN,EPDM RC2	1
42	SX8108352	DISK,2X2FLAPPER VLV, ROUND RC2	1
43	SX8108351	DISK,2X2,FLAPPER VLV, FLAT EDG RC2	1
44	GX5079603	CAPSCRW,HX,1/4-20X5/8,18-8SS HX HD	1
45	GX5079602	LOCKNUT,1/4-20,18-8SS RC2 RCH2	1
46	GX5077100	CAPSCRW,HX,3/8-16X1,18-8SS HX HD	4

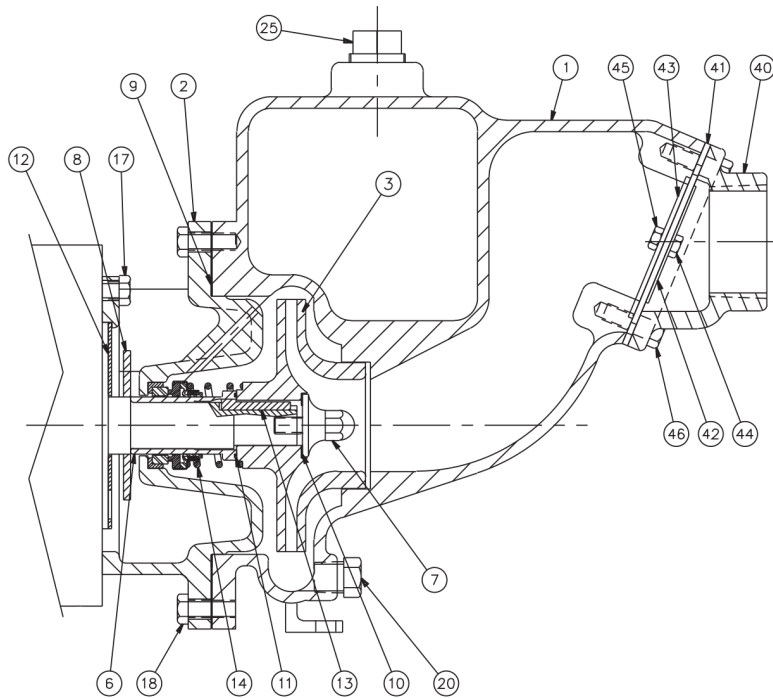


Ref #	Component
1	Casing
2	Cover
3	Impeller
6	Shaft Sleeve
7	Impeller Screw
8	Slinger
9	Gasket, Casing
10	Gasket, Impeller Screw
11	O-Ring, Shaft Sleeve (Sleeve/Impeller)
12	Splashplate
13	Key, Impeller
14	Seal Kit
17	Capscrew (Motor/Adapter)
18	Capscrew (Casing/Adapter)
20	Plug, Drain
25	Plug, Fill
40	Flapper Body
41	Flapper
42	Disc, Flapper, Round
43	Disc, Flapper, Flat Edge
44	Capscrew (Flapper Disc)
45	Locknut, (Flapper Disc)
46	Capscrew (Casing/Flapper Body)

**Exploded View**

*Optional Items Shown in ITALICS*

Ref #	Component Item No.	Description	Qty Per
1	SV8402682	CASING,2X2,A/B,SS,SELF PRIME RC2	1
2	SC8402702	COVER,2X2,SS,SELF PRIMR RC2	1
3	SI8304792	IMPELLER,2X2,B&C,SS RC2	1
6	SX8103721	SLEEVE,SHFT,SS ZC2	1
7	SI8107270	SCREW,IMP,SS DC2 EC2 KC2 MC3 ZC2	1
8	GX5042301	SLINGER,1-7/32X3-1/4X5/32 80 DUR (180JM-210JM)	1
9	GX5107100	GASKET,2X2,SLF PRM,N-8090 6-11/64X5-5/8X1/32	1
10	GX5038500	O-RING,.989X1.29X.070,BUNA 70 DUR, IMP SCRW	1
	<i>GX5038502</i>	<i>O-RING,T21,1-1/4,EPDM (2-022)</i>	<i>1</i>
	<i>GX5038501</i>	<i>O-RING,43/252/325,VIT,FDA CMPL DC3 ZC2</i>	<i>1</i>
11	GX5098300	O-RING,T21,1-1/4,BUNA,SLV	1
	<i>GX5098301</i>	<i>O-RING,T21,1-1/4,EPDM,SLV (1-1/4 X 1-3/8 X 1/16)</i>	<i>1</i>
	<i>GX5098302</i>	<i>O-RING,43/252/325,VIT DC3</i>	<i>1</i>
12	GX5091600	SPLASHPLATE,EC2 KC2 RC2 ZC2,SS FR143-184	1
13	GX5051300	KEY,IMP,.187SQX1.5 EC KC RC ZC	1
14	GS8109040	KIT,1-1/4,T21,CE/CA/BU RC2	1
	<i>GS8108990</i>	<i>KIT,1-1/4,T21,SC/CA/VI RC2</i>	<i>1</i>
17	GX5077100	CAPSCRW,HX,3/8-16X1,18-8SS HX HD	4
18	P1GX30-50	CAPSCRW,HX,3/8-16X3/4,18-8SS HEX HD	8
20	GX5075100	PLUG,PIPE,1/8IN,SS RC2 ZC2 ZCH2	1
25	SX5107201	PLUG,PIPE,HEX HD,1IN,316SS RC2	1
40	SX8304182	VALVE,CHK,BDY,2X2,SS RC2	1
41	GX8108343	FLAPPER,22,2IN,EPDM RC2	1
42	SX8108352	DISK,2X2FLAPPER VLV, ROUND RC2	1
43	SX8108351	DISK,2X2,FLAPPER VLV, FLAT EDG RC2	1
44	GX5079603	CAPSCRW,HX,1/4-20X5/8,18-8SS HX HD	1
45	GX5079602	LOCKNUT,1/4-20,18-8SS RC2 RCH2	1

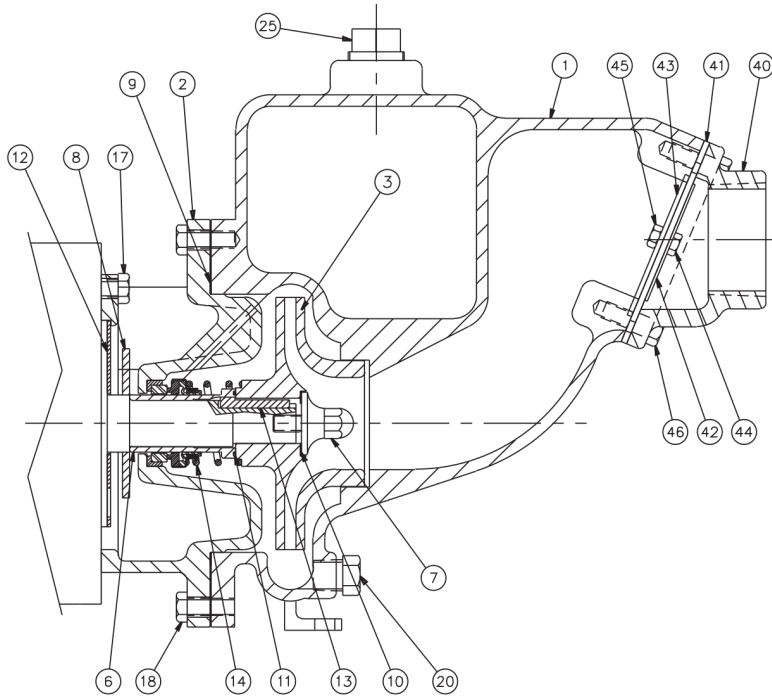


Ref #	Component
1	Casing
2	Cover
3	Impeller
6	Shaft Sleeve
7	Impeller Screw
8	Slinger
9	Gasket, Casing
10	Gasket, Impeller Screw
11	O-Ring, Shaft Sleeve (Sleeve/Impeller)
12	Splashplate
13	Key, Impeller
14	Seal Kit
17	Capscrew (Motor/Adapter)
18	Capscrew (Casing/Adapter)
20	Plug, Drain
25	Plug, Fill
40	Flapper Body
41	Flapper
42	Disc, Flapper, Round
43	Disc, Flapper, Flat Edge
44	Capscrew (Flapper Disc)
45	Locknut, (Flapper Disc)
46	Capscrew (Casing/Flapper Body)

**Exploded View**

*Optional Items Shown in ITALICS*

Ref #	Component Item No.	Description	Qty Per
46	GX5077100	CAPSCRW,HX,3/8-16X1,18-8SS HX HD	4

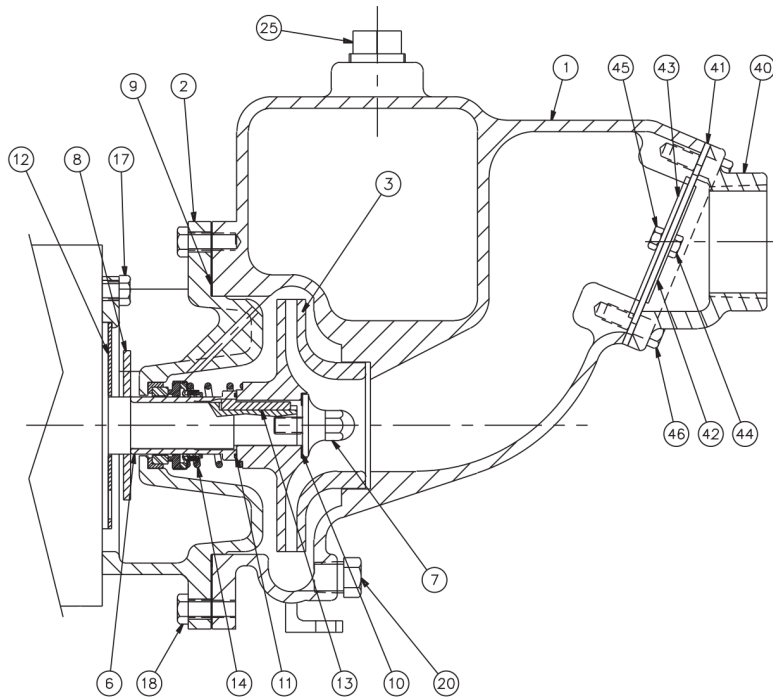


Ref #	Component
1	Casing
2	Cover
3	Impeller
6	Shaft Sleeve
7	Impeller Screw
8	Slinger
9	Gasket, Casing
10	Gasket, Impeller Screw
11	O-Ring, Shaft Sleeve (Sleeve/Impeller)
12	Splashplate
13	Key, Impeller
14	Seal Kit
17	Capscrew (Motor/Adapter)
18	Capscrew (Casing/Adapter)
20	Plug, Drain
25	Plug, Fill
40	Flapper Body
41	Flapper
42	Disc, Flapper, Round
43	Disc, Flapper, Flat Edge
44	Capscrew (Flapper Disc)
45	Locknut, (Flapper Disc)
46	Capscrew (Casing/Flapper Body)

**Exploded View**

*Optional Items Shown in ITALICS*

Ref #	Component Item No.	Description	Qty Per
1	SV8403012	CASING,2X2C,SS,SELF PRIME RC2	1
2	SC8403002	COVER,2X2C,SS,SELF PRIMR RC2	1
3	SI8304792	IMPELLER,2X2,B&C,SS RC2	1
6	SX8103721	SLEEVE,SHFT,SS ZC2	1
7	SI8107270	SCREW,IMP,SS DC2 EC2 KC2 MC3 ZC2	1
8	GX5042301	SLINGER,1-7/32X3-1/4X5/32 80 DUR (180JM-210JM)	1
9	GX5108400	GASKET,2X2C,CSNG,N-80 90 RC2	1
10	GX5038500	O-RING,.989X1.29X.070,BUNA 70 DUR, IMP SCRW	1
	<i>GX5038502</i>	<i>O-RING,T21,1-1/4,EPDM (2-022)</i>	<i>1</i>
	<i>GX5038501</i>	<i>O-RING,43/252/325,VIT,FDA CMPL DC3 ZC2</i>	<i>1</i>
11	GX5098300	O-RING,T21,1-1/4,BUNA,SLV	1
	<i>GX5098301</i>	<i>O-RING,T21,1-1/4,EPDM,SLV (1-1/4 X 1-3/8 X 1/16)</i>	<i>1</i>
	<i>GX5098302</i>	<i>O-RING,43/252/325,VIT DC3</i>	<i>1</i>
12	GX5091600	SPLASHPLATE,EC2 KC2 RC2 ZC2,SS FR143-184	1
13	GX5051300	KEY,IMP,.187SQX1.5 EC KC RC ZC	1
14	GS8109040	KIT,1-1/4,T21,CE/CA/BU RC2	1
	<i>GS8108990</i>	<i>KIT,1-1/4,T21,SC/CA/VI RC2</i>	<i>1</i>
17	GX5077100	CAPSCRW,HX,3/8-16X1,18-8SS HX HD	4
18	P1GX30-50	CAPSCRW,HX,3/8-16X3/4,18-8SS HEX HD	8
20	GX5075100	PLUG,PIPE,1/8IN,SS RC2 ZC2 ZCH2	1
25	SX5107201	PLUG,PIPE,HEX HD,1IN,316SS RC2	1
40	SX8304182	VALVE,CHK,BDY,2X2,SS RC2	1
41	GX8108343	FLAPPER,22,2IN,EPDM RC2	1
42	SX8108352	DISK,2X2FLAPPER VLV, ROUND RC2	1
43	SX8108351	DISK,2X2,FLAPPER VLV, FLAT EDG RC2	1
44	GX5079603	CAPSCRW,HX,1/4-20X5/8,18-8SS HX HD	1
45	GX5079602	LOCKNUT,1/4-20,18-8SS RC2 RCH2	1

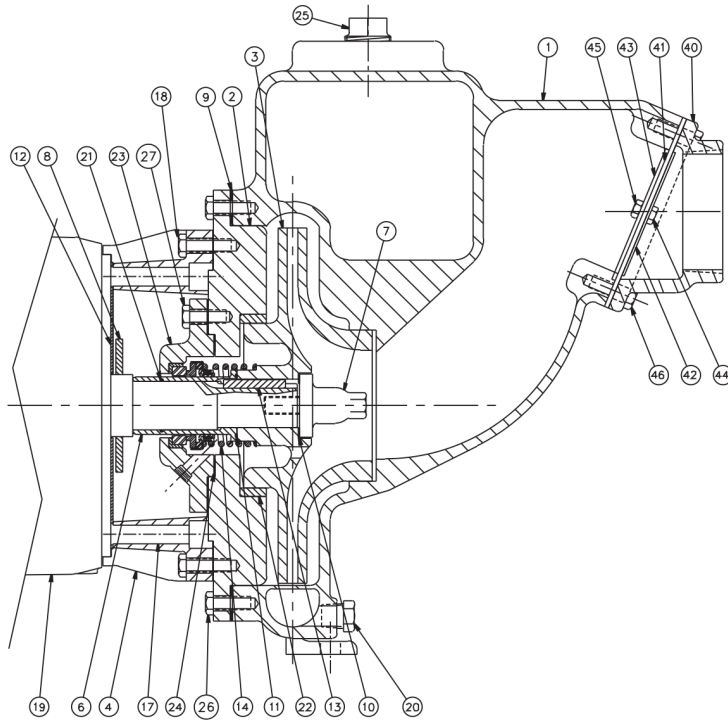


Ref #	Component
1	Casing
2	Cover
3	Impeller
6	Shaft Sleeve
7	Impeller Screw
8	Slinger
9	Gasket, Casing
10	Gasket, Impeller Screw
11	O-Ring, Shaft Sleeve (Sleeve/Impeller)
12	Splashplate
13	Key, Impeller
14	Seal Kit
17	Capscrew (Motor/Adapter)
18	Capscrew (Casing/Adapter)
20	Plug, Drain
25	Plug, Fill
40	Flapper Body
41	Flapper
42	Disc, Flapper, Round
43	Disc, Flapper, Flat Edge
44	Capscrew (Flapper Disc)
45	Locknut, (Flapper Disc)
46	Capscrew (Casing/Flapper Body)

**Exploded View**

*Optional Items Shown in ITALICS*

Ref #	Component Item No.	Description	Qty Per
46	GX5077100	CAPSCRW,HX,3/8-16X1,18-8SS HX HD	4



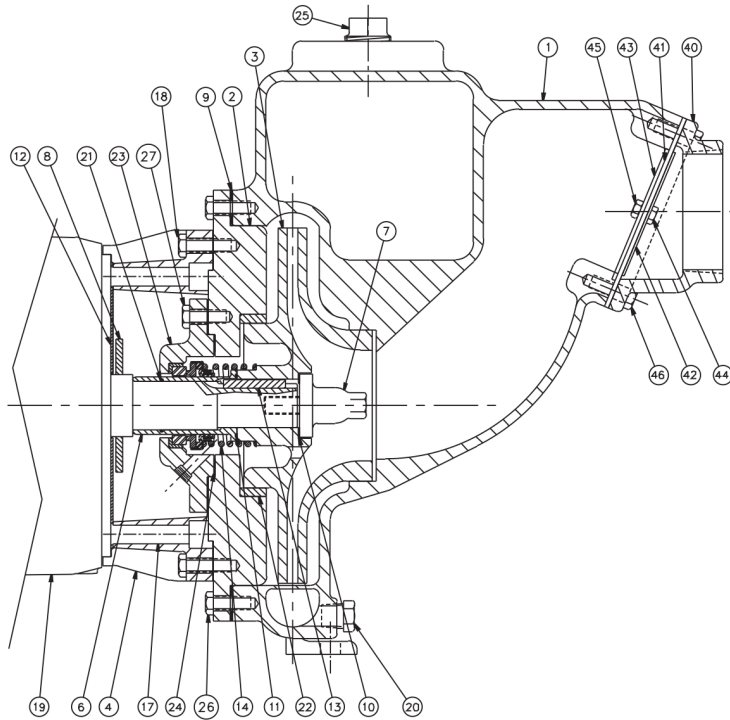
Ref #	Component
1	Casing
2	Cover
3	Impeller
4	Adapter
6	Shaft Sleeve
7	Impeller Screw
8	Slinger
9	Gasket, Casing
10	Gasket, Impeller Screw
11	Gasket Or O-Ring, Shaft Sleeve
12	Splashplate
13	Key, Impeller
14	Seal Kit
17	Capscrew (Motor/Adapter)
18	Capscrew (Casing/Adapter)
20	Plug, Drain
21*	O-Ring, Shaft Sleeve (Shaft/Sleeve)
22	Wear Ring
23	Stuffing Box
24	Gasket, Stuffing Box
25	Plug, Fill
26	Capscrew (Casing/Cover)
27	Capscrew (Cover/Stuffing Box)
40	Flapper Body
41	Flapper
42	Disc, Flapper, Round
43	Disc, Flapper, Flat Edge
44	Capscrew (Flapper Disc)
45	Locknut, (Flapper Disc)
46	Capscrew (Casing/Flapper Body)

\* RCH2 Only

**Exploded View**

*Optional Items Shown in ITALICS*

Ref #	Component Item No.	Description	Qty Per
1	SV8402892	CASING,3X3X10,SS RC2	1
2	SC8402262	COVER,4X3L,SS,JM ZC2	1
3	SI8303772	IMPELLER,3X2,SS,T21 ZC2	1
4	GX8400951	ADAPTER,100 JM FRAME ZC2	1
	<i>SX8400952</i>	<i>ADAPTER,100 JM FRAME,SS ZC2</i>	<i>1</i>
6	SX8107752	SLEEVE,SHFT,4X3L,SS ZC2	1
7	SI8107742	SCREW,32/43C/43L/3310,IMP,SS ZC2 RC2	1
8	GX5042301	SLINGER,1-7/32X3-1/4X5/32 80 DUR (180JM-210JM)	1
9	GX5106200	GASKET,3X2,CVR,CASING 10-1/8X 12-1/8 X 1/16 N-8090	1
10	GX5040500	GASKET,IMP SCRW,7/8X1-3/8X1/32	1
11	GX5040000	GASKET,7/8X1-1/2X1/32,N-8090	1
12	GX5091400	SPLASHPLATE,EC2/KC2/RC2/ZC2,SS FR213-256	1
13	GX5051300	KEY,IMP,,187SQX1.5 EC KC RC ZC	1
17	GX5077100	CAPSCRW,HX,3/8-16X1,18-8SS HX HD	4
18	GX5077100	CAPSCRW,HX,3/8-16X1,18-8SS HX HD	8
20	GX5075600	PLUG,PIPE,3/8IN,SS RC2 ZC2 ZCH2	1
21	GX5038500	O-RING,,989X1.29X.070,BUNA 70 DUR, IMP SCRW	1
	<i>GX5038502</i>	<i>O-RING,T21,1-1/4,EPDM (2-022)</i>	<i>1</i>
	<i>GX5038501</i>	<i>O-RING,43/252/325,VIT,FDA CMPL DC3 ZC2</i>	<i>1</i>
22	SW8107682	RING,WEAR,3X2 4X3 L ,SS,STUFF BX ZC2 ZCH2	1
23	SX8204302	STUFFING BOX,SS,JM,SGL SEAL ZC2	1
24	GX5041900	GASKET,4X3X1/32,N-8090,STFBX STUFFING BOX	1
25	SX5107201	PLUG,PIPE,HEX HD,1IN,316SS RC2	1
26	GX5077100	CAPSCRW,HX,3/8-16X1,18-8SS HX HD	12
27	GX5077100	CAPSCRW,HX,3/8-16X1,18-8SS HX HD	4
40	SX8304272	VALVE,FLAPPER,BDY,3X3,SS RCH2	1
41	GX8108441	FLAPPER,33/337/3310,3IN RC2 RCH2	1



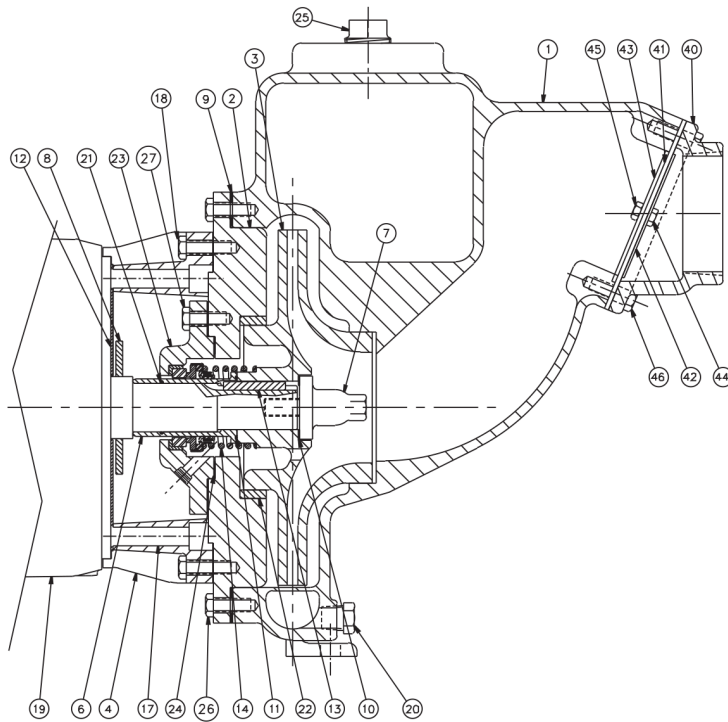
Ref #	Component
1	Casing
2	Cover
3	Impeller
4	Adapter
6	Shaft Sleeve
7	Impeller Screw
8	Slinger
9	Gasket, Casing
10	Gasket, Impeller Screw
11	Gasket Or O-Ring, Shaft Sleeve
12	Splashplate
13	Key, Impeller
14	Seal Kit
17	Capscrew (Motor/Adapter)
18	Capscrew (Casing/Adapter)
20	Plug, Drain
21*	O-Ring, Shaft Sleeve (Shaft/Sleeve)
22	Wear Ring
23	Stuffing Box
24	Gasket, Stuffing Box
25	Plug, Fill
26	Capscrew (Casing/Cover)
27	Capscrew (Cover/Stuffing Box)
40	Flapper Body
41	Flapper
42	Disc, Flapper, Round
43	Disc, Flapper, Flat Edge
44	Capscrew (Flapper Disc)
45	Locknut, (Flapper Disc)
46	Capscrew (Casing/Flapper Body)

\* RCH2 Only

**Exploded View**

*Optional Items Shown in ITALICS*

Ref #	Component Item No.	Description	Qty Per
42	SX8108452	DISK,3IN,FLAPPER VLV-SM RC2	1
43	SX8108451	DISK,3IN,FLAPPER VLV,LG RC2	1
44	GX5079603	CAPSCRW,HX,1/4-20X5/8,18-8SS HX HD	1
45	GX5079602	LOCKNUT,1/4-20,18-8SS RC2 RCH2	1
46	GX5077100	CAPSCRW,HX,3/8-16X1,18-8SS HX HD	4



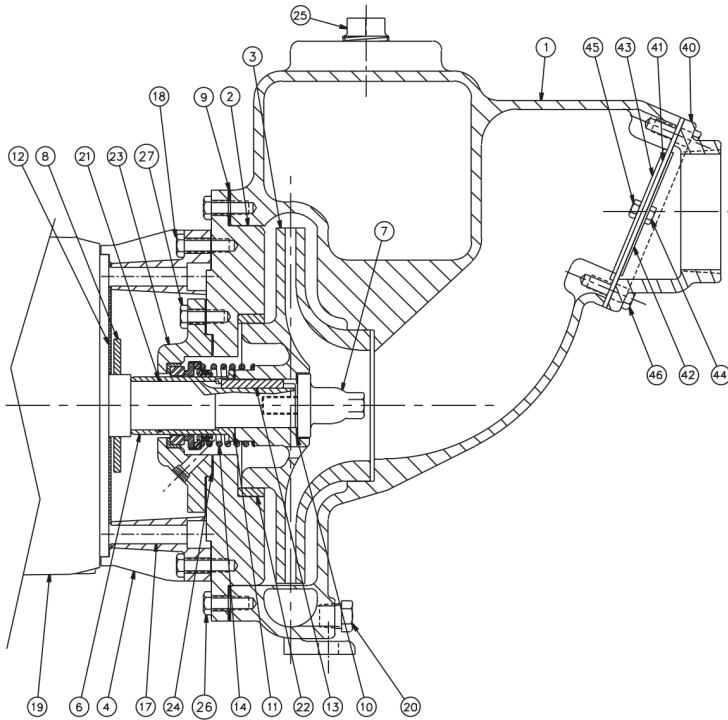
Ref #	Component
1	Casing
2	Cover
3	Impeller
4	Adapter
6	Shaft Sleeve
7	Impeller Screw
8	Slinger
9	Gasket, Casing
10	Gasket, Impeller Screw
11	Gasket Or O-Ring, Shaft Sleeve
12	Splashplate
13	Key, Impeller
14	Seal Kit
17	Capscrew (Motor/Adapter)
18	Capscrew (Casing/Adapter)
20	Plug, Drain
21*	O-Ring, Shaft Sleeve (Shaft/Sleeve)
22	Wear Ring
23	Stuffing Box
24	Gasket, Stuffing Box
25	Plug, Fill
26	Capscrew (Casing/Cover)
27	Capscrew (Cover/Stuffing Box)
40	Flapper Body
41	Flapper
42	Disc, Flapper, Round
43	Disc, Flapper, Flat Edge
44	Capscrew (Flapper Disc)
45	Locknut, (Flapper Disc)
46	Capscrew (Casing/Flapper Body)

\* RCH2 Only

**Exploded View**

*Optional Items Shown in ITALICS*

Ref #	Component Item No.	Description	Qty Per
1	SV8402892	CASING,3X3X10,SS RC2	1
2	SC8402262	COVER,4X3L,SS,JM ZC2	1
3	SI8303772	IMPELLER,3X2,SS,T21 ZC2	1
4	GX8301391	ADAPTER,210 JM FRAME ZC2	1
	<i>SX8301392</i>	<i>ADAPTER,210 JM FRAME,SS ZC2</i>	<i>1</i>
6	SX8107752	SLEEVE,SHFT,4X3L,SS ZC2	1
7	SI8107742	SCREW,32/43C/43L/3310,IMP,SS ZC2 RC2	1
8	GX5042301	SLINGER,1-7/32X3-1/4X5/32 80 DUR (180JM-210JM)	1
9	GX5106200	GASKET,3X2,CVR,CASING 10-1/8X 12-1/8 X 1/16 N-8090	1
10	GX5040500	GASKET,IMP SCRW,7/8X1-3/8X1/32	1
11	GX5040000	GASKET,7/8X1-1/2X1/32,N-8090	1
12	GX5091400	SPLASHPLATE,EC2/KC2/RC2/ZC2,SS FR213-256	1
13	GX5051300	KEY,IMP,.187SQX1.5 EC KC RC ZC	1
14	GS8110250	KIT,1-1/4,3X3,T21,CE/CA/BU RC2	1
	<i>GS8110255-316SS</i>	<i>KIT,1-1/4,337,T21,TC/SC/BU 316SS METALLICS, RC2</i>	<i>1</i>
17	GX5077400	CAPSCRW,SH,1/2-13X1-3/4,BLK OX SCKT HD	4
18	GX5077100	CAPSCRW,HX,3/8-16X1,18-8SS HX HD	8
22	SW8107682	RING,WEAR,3X2 4X3 L ,SS,STUFF BX ZC2 ZCH2	1
23	SX8204302	STUFFING BOX,SS,JM,SGL SEAL ZC2	1
24	GX5041900	GASKET,4X3X1/32,N-8090,STFBX STUFFING BOX	1
26	GX5077100	CAPSCRW,HX,3/8-16X1,18-8SS HX HD	12
27	GX5077100	CAPSCRW,HX,3/8-16X1,18-8SS HX HD	4
40	SX8304272	VALVE,FLAPPER,BDY,3X3,SS RCH2	1
41	GX8108441	FLAPPER,33/337/3310,3IN RC2 RCH2	1
42	SX8108452	DISK,3IN,FLAPPER VLV-SM RC2	1
43	SX8108451	DISK,3IN,FLAPPER VLV,LG RC2	1
44	GX5079603	CAPSCRW,HX,1/4-20X5/8,18-8SS HX HD	1



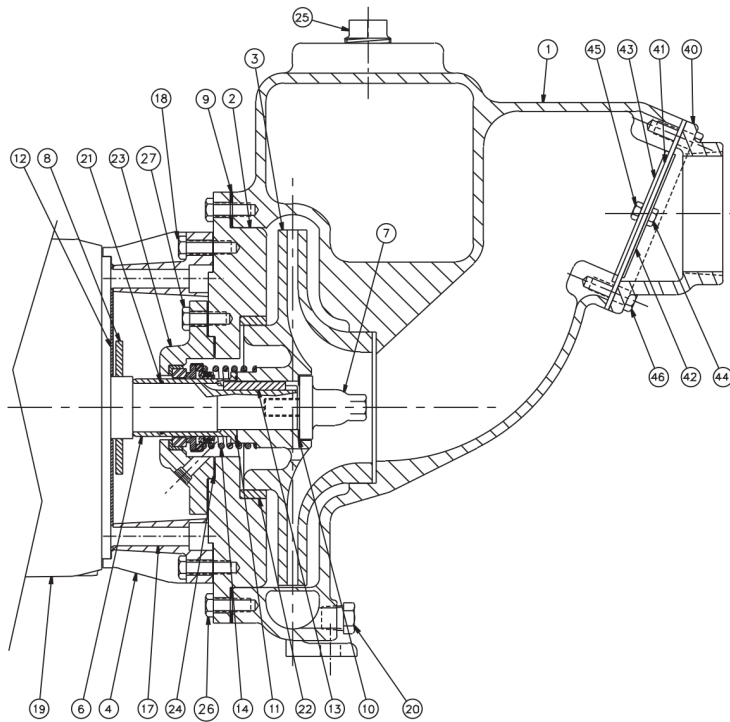
Ref #	Component
1	Casing
2	Cover
3	Impeller
4	Adapter
6	Shaft Sleeve
7	Impeller Screw
8	Slinger
9	Gasket, Casing
10	Gasket, Impeller Screw
11	Gasket Or O-Ring, Shaft Sleeve
12	Splashplate
13	Key, Impeller
14	Seal Kit
17	Capscrew (Motor/Adapter)
18	Capscrew (Casing/Adapter)
20	Plug, Drain
21*	O-Ring, Shaft Sleeve (Shaft/Sleeve)
22	Wear Ring
23	Stuffing Box
24	Gasket, Stuffing Box
25	Plug, Fill
26	Capscrew (Casing/Cover)
27	Capscrew (Cover/Stuffing Box)
40	Flapper Body
41	Flapper
42	Disc, Flapper, Round
43	Disc, Flapper, Flat Edge
44	Capscrew (Flapper Disc)
45	Locknut, (Flapper Disc)
46	Capscrew (Casing/Flapper Body)

\* RCH2 Only

**Exploded View**

*Optional Items Shown in ITALICS*

Ref #	Component Item No.	Description	Qty Per
45	GX5079602	LOCKNUT,1/4-20,18-8SS RC2 RCH2	1
46	GX5077100	CAPSCRW,HX,3/8-16X1,18-8SS HX HD	4



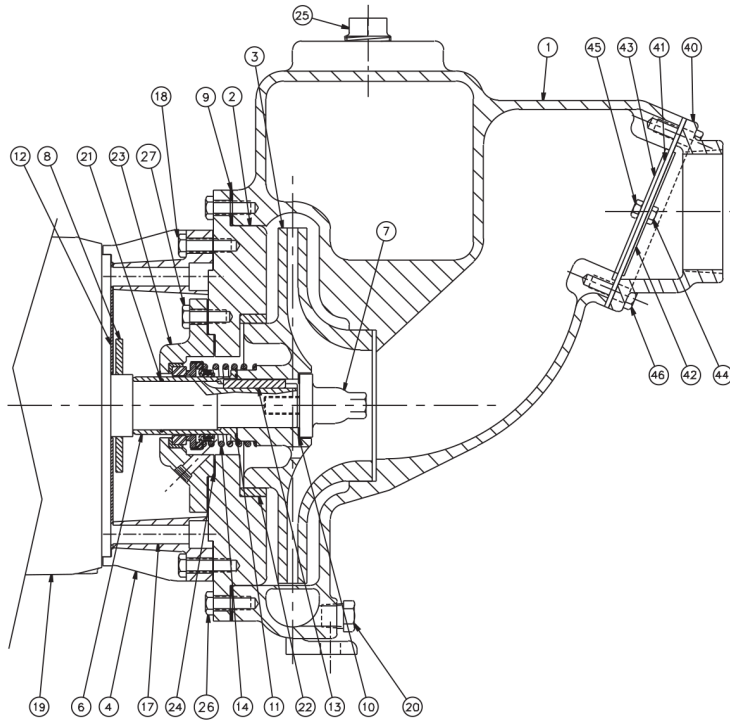
Ref #	Component
1	Casing
2	Cover
3	Impeller
4	Adapter
6	Shaft Sleeve
7	Impeller Screw
8	Slinger
9	Gasket, Casing
10	Gasket, Impeller Screw
11	Gasket Or O-Ring, Shaft Sleeve
12	Splashplate
13	Key, Impeller
14	Seal Kit
17	Capscrew (Motor/Adapter)
18	Capscrew (Casing/Adapter)
20	Plug, Drain
21*	O-Ring, Shaft Sleeve (Shaft/Sleeve)
22	Wear Ring
23	Stuffing Box
24	Gasket, Stuffing Box
25	Plug, Fill
26	Capscrew (Casing/Cover)
27	Capscrew (Cover/Stuffing Box)
40	Flapper Body
41	Flapper
42	Disc, Flapper, Round
43	Disc, Flapper, Flat Edge
44	Capscrew (Flapper Disc)
45	Locknut, (Flapper Disc)
46	Capscrew (Casing/Flapper Body)

\* RCH2 Only

**Exploded View**

*Optional Items Shown in ITALICS*

Ref #	Component Item No.	Description	Qty Per
1	SV8403192	CASING,3X3X7,SELF PRIME	1
2	SC8302511	COVER,3X2-1/2,SS DC2	1
3	SI8302601	IMPELLER,3X2-1/2,SS DC2	1
4	GX8400951	ADAPTER,100 JM FRAME ZC2	1
	<i>SX8400952</i>	<i>ADAPTER,100 JM FRAME,SS ZC2</i>	1
6	SX8103721	SLEEVE,SHFT,SS ZC2	1
7	SI8107270	SCREW,IMP,SS DC2 EC2 KC2 MC3 ZC2	1
8	GX5042301	SLINGER,1-7/32X3-1/4X5/32 80 DUR (180JM-210JM)	1
9	GX5041200	GASKET,7-47/64X7-1/8X 1/32 ,N-8090	1
10	GX5040500	GASKET,IMP SCRW,7/8X1-3/8X1/32	1
11	GX5098300	O-RING,T21,1-1/4,BUNA,SLV	1
	<i>GX5098301</i>	<i>O-RING,T21,1-1/4,EPDM,SLV (1-1/4 X 1-3/8 X 1/16)</i>	1
	<i>GX5098302</i>	<i>O-RING,43/252/325,VIT DC3</i>	1
12	GX5091600	SPLASHPLATE,EC2 KC2 RC2 ZC2,SS FR143-184	1
13	GX5051300	KEY,IMP, .187SQX1.5 EC KC RC ZC	1
14	GS8110250	KIT,1-1/4,3X3,T21,CE/CA/BU RC2	1
	<i>GS8110255-316SS</i>	<i>KIT,1-1/4,337,T21,TC/SC/BU 316SS METALLICS, RC2</i>	1
17	GX5077100	CAPSCRW,HX,3/8-16X1,18-8SS HX HD	4
18	GX5077100	CAPSCRW,HX,3/8-16X1,18-8SS HX HD	8
20	GX5075600	PLUG,PIPE,3/8IN,SS RC2 ZC2 ZCH2	1
25	SX5107201	PLUG,PIPE,HEX HD,1IN,316SS RC2	1
40	SX8304272	VALVE,FLAPPER,BDY,3X3,SS RCH2	1
41	GX8108441	FLAPPER,33/337/3310,3IN RC2 RCH2	1
42	SX8108452	DISK,3IN,FLAPPER VLV-SM RC2	1
43	SX8108451	DISK,3IN,FLAPPER VLV,LG RC2	1
44	GX5079602	LOCKNUT,1/4-20,18-8SS RC2 RCH2	1
45	GX5079603	CAPSCRW,HX,1/4-20X5/8,18-8SS HX HD	1



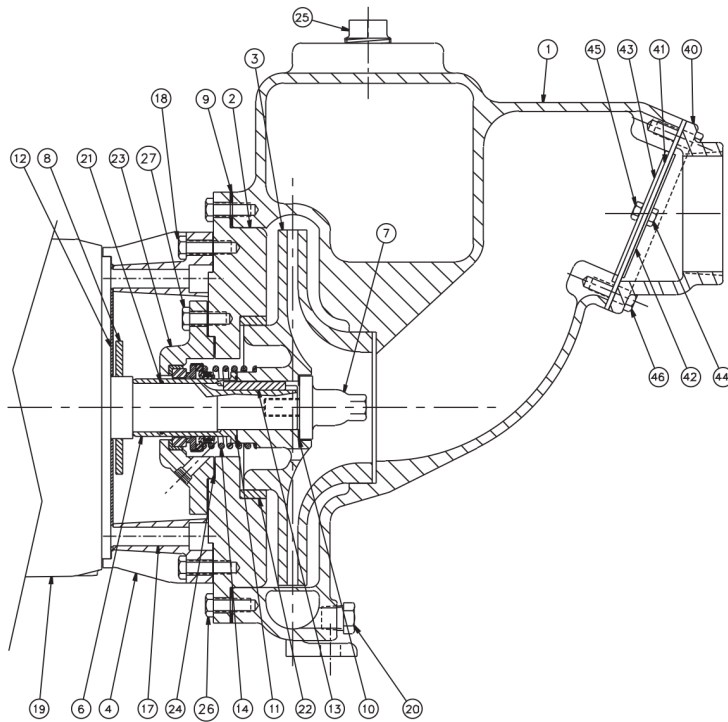
Ref #	Component
1	Casing
2	Cover
3	Impeller
4	Adapter
6	Shaft Sleeve
7	Impeller Screw
8	Slinger
9	Gasket, Casing
10	Gasket, Impeller Screw
11	Gasket Or O-Ring, Shaft Sleeve
12	Splashplate
13	Key, Impeller
14	Seal Kit
17	Capscrew (Motor/Adapter)
18	Capscrew (Casing/Adapter)
20	Plug, Drain
21*	O-Ring, Shaft Sleeve (Shaft/Sleeve)
22	Wear Ring
23	Stuffing Box
24	Gasket, Stuffing Box
25	Plug, Fill
26	Capscrew (Casing/Cover)
27	Capscrew (Cover/Stuffing Box)
40	Flapper Body
41	Flapper
42	Disc, Flapper, Round
43	Disc, Flapper, Flat Edge
44	Capscrew (Flapper Disc)
45	Locknut, (Flapper Disc)
46	Capscrew (Casing/Flapper Body)

\* RCH2 Only

**Exploded View**

*Optional Items Shown in ITALICS*

Ref #	Component Item No.	Description	Qty Per
46	GX5077100	CAPSCRW,HX,3/8-16X1,18-8SS HX HD	4



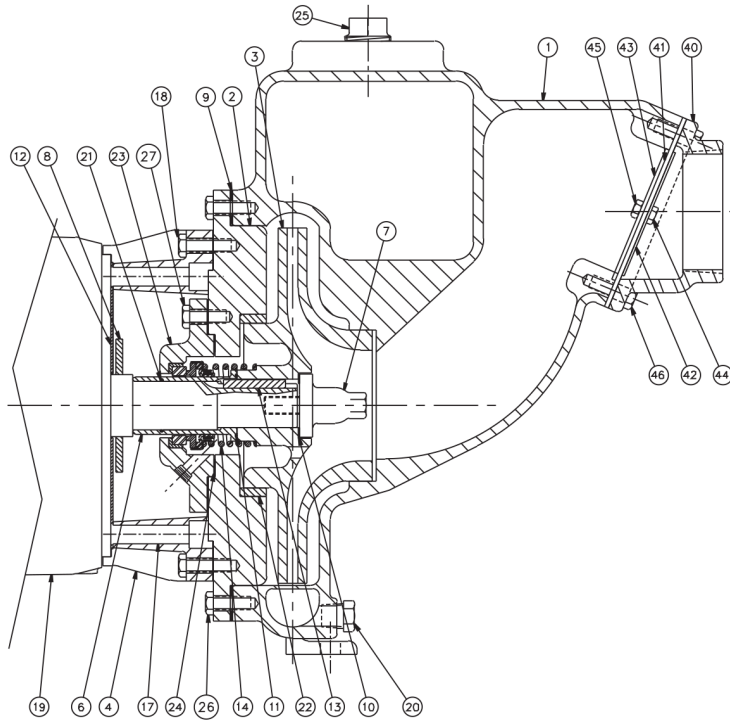
Ref #	Component
1	Casing
2	Cover
3	Impeller
4	Adapter
6	Shaft Sleeve
7	Impeller Screw
8	Slinger
9	Gasket, Casing
10	Gasket, Impeller Screw
11	Gasket Or O-Ring, Shaft Sleeve
12	Splashplate
13	Key, Impeller
14	Seal Kit
17	Capscrew (Motor/Adapter)
18	Capscrew (Casing/Adapter)
20	Plug, Drain
21*	O-Ring, Shaft Sleeve (Shaft/Sleeve)
22	Wear Ring
23	Stuffing Box
24	Gasket, Stuffing Box
25	Plug, Fill
26	Capscrew (Casing/Cover)
27	Capscrew (Cover/Stuffing Box)
40	Flapper Body
41	Flapper
42	Disc, Flapper, Round
43	Disc, Flapper, Flat Edge
44	Capscrew (Flapper Disc)
45	Locknut, (Flapper Disc)
46	Capscrew (Casing/Flapper Body)

\* RCH2 Only

**Exploded View**

*Optional Items Shown in ITALICS*

Ref #	Component Item No.	Description	Qty Per
1	SV8402892	CASING,3X3X10,SS RC2	1
2	SC8402262	COVER,4X3L,SS,JM ZC2	1
3	SI8303472	IMPELLER,3X2,SS,T21 ZCH2	1
4	GX8401251	ADAPTER,250 JM FRAME ZCH2	1
	<i>SX8401252</i>	<i>ADAPTER,250 JM FRAME,SS NS ZCH2</i>	<i>1</i>
6	SX8107642	SLEEVE,SHFT,4X3L,SS,JM FRM ZCH2	1
7	SI8107732	SCREW,32/43L/54P/3310,IMP,SS ZCH2 RCH2	1
8	GX5098700	SLINGER,1-23/32X3-3/4X 3/16 ZCH2	1
9	GX5106200	GASKET,3X2,CVR,CASING 10-1/8X 12-1/8 X 1/16 N-8090	1
10	GX5041400	GASKET,IMP SCRW,1-1/4X1-13/16 X1/32	1
	GX5041600	GASKET,1-1/4X1-3/4X1/32 1/4 KEYSLOT,SLV/IMP	1
12	GX5091400	SPLASHPLATE,EC2/KC2/RC2/ZC2,SS FR213-256	1
13	GX5051200	KEY,IMPLR/SLV,2.OX.25X.25 304-SS	1
14	GS8108790	KIT,1-5/8,3X3,CE/CA/BU RCH2	1
	<i>GS8108790-316SS</i>	<i>KIT,1-5/8,3X3,CE/CA/BU,316SS MET RCH2</i>	<i>1</i>
	<i>GS8108710</i>	<i>KIT,1-5/8,3X3,SC/CA/VI RCH2</i>	<i>1</i>
	<i>GS8111190-316SS</i>	<i>KIT,1-5/8,3X3,TC/SC/BU,316SS MET RCH2</i>	<i>1</i>
17	GX5077500	CAPSCRW,SH,1/2-13X3,BLK OX SCKT HD	4
18	GX5077100	CAPSCRW,HX,3/8-16X1,18-8SS HX HD	8
21	GX5099300	O-RING,1-3/8X1-1/2X1/16,BUNA SLEEVE	1
	<i>GX5099301</i>	<i>O-RING,T1 T21,1-5/8,EPDM,SLV (1-3/8 X 1-1/2 X 1/16)</i>	<i>1</i>
	<i>GX5099302</i>	<i>O-RING,33/43,VIT,FDA COMPL DCH3</i>	<i>1</i>
22	SW8107682	RING,WEAR,3X2 4X3 L,SS,STUFF BX ZC2 ZCH2	1
23	SX8204232	STUFFING BOX,SS,JM,SGL SEAL ZCH2	1
24	GX5041900	GASKET,4X3X1/32,N-8090,STFBX STUFFING BOX	1
25	SX5107201	PLUG,PIPE,HEX HD,1IN,316SS RC2	1
26	GX5077100	CAPSCRW,HX,3/8-16X1,18-8SS HX HD	12



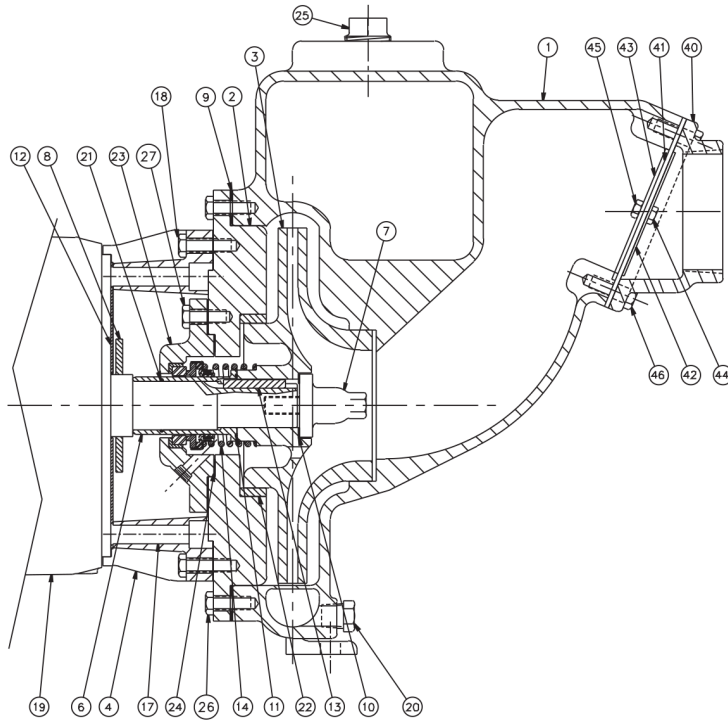
Ref #	Component
1	Casing
2	Cover
3	Impeller
4	Adapter
6	Shaft Sleeve
7	Impeller Screw
8	Slinger
9	Gasket, Casing
10	Gasket, Impeller Screw
11	Gasket Or O-Ring, Shaft Sleeve
12	Splashplate
13	Key, Impeller
14	Seal Kit
17	Capscrew (Motor/Adapter)
18	Capscrew (Casing/Adapter)
20	Plug, Drain
21*	O-Ring, Shaft Sleeve (Shaft/Sleeve)
22	Wear Ring
23	Stuffing Box
24	Gasket, Stuffing Box
25	Plug, Fill
26	Capscrew (Casing/Cover)
27	Capscrew (Cover/Stuffing Box)
40	Flapper Body
41	Flapper
42	Disc, Flapper, Round
43	Disc, Flapper, Flat Edge
44	Capscrew (Flapper Disc)
45	Locknut, (Flapper Disc)
46	Capscrew (Casing/Flapper Body)

\* RCH2 Only

**Exploded View**

*Optional Items Shown in ITALICS*

Ref #	Component Item No.	Description	Qty Per
27	GX5077100	CAPSCRW,HX,3/8-16X1,18-8SS HX HD	4
40	SX8304272	VALVE,FLAPPER,BDY,3X3,SS RCH2	1
41	GX8108441	FLAPPER,33/337/3310,3IN RC2 RCH2	1
42	SX8108452	DISK,3IN,FLAPPER VLV-SM RC2	1
43	SX8108451	DISK,3IN,FLAPPER VLV,LG RC2	1
44	GX5079600	CAPSCRW,HX,1/4-20X1/2,18-8SS HX HD	1
45	GX5079602	LOCKNUT,1/4-20,18-8SS RC2 RCH2	1
46	GX5077100	CAPSCRW,HX,3/8-16X1,18-8SS HX HD	4



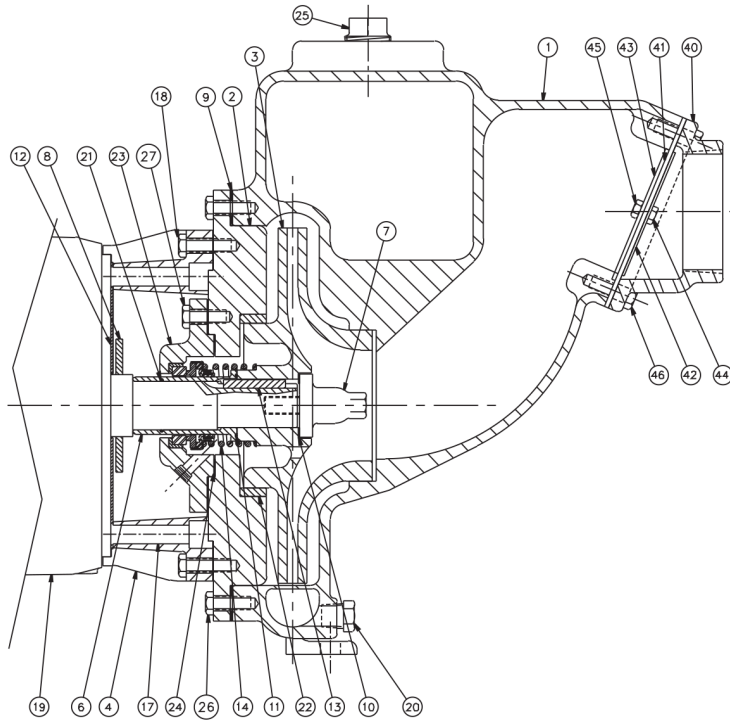
Ref #	Component
1	Casing
2	Cover
3	Impeller
4	Adapter
6	Shaft Sleeve
7	Impeller Screw
8	Slinger
9	Gasket, Casing
10	Gasket, Impeller Screw
11	Gasket Or O-Ring, Shaft Sleeve
12	Splashplate
13	Key, Impeller
14	Seal Kit
17	Capscrew (Motor/Adapter)
18	Capscrew (Casing/Adapter)
20	Plug, Drain
21*	O-Ring, Shaft Sleeve (Shaft/Sleeve)
22	Wear Ring
23	Stuffing Box
24	Gasket, Stuffing Box
25	Plug, Fill
26	Capscrew (Casing/Cover)
27	Capscrew (Cover/Stuffing Box)
40	Flapper Body
41	Flapper
42	Disc, Flapper, Round
43	Disc, Flapper, Flat Edge
44	Capscrew (Flapper Disc)
45	Locknut, (Flapper Disc)
46	Capscrew (Casing/Flapper Body)

\* RCH2 Only

**Exploded View**

*Optional Items Shown in ITALICS*

Ref #	Component Item No.	Description	Qty Per
1	SV8402892	CASING,3X3X10,SS RC2	1
2	SC8402262	COVER,4X3L,SS,JM ZC2	1
3	SI8303472	IMPELLER,3X2,SS,T21 ZCH2	1
4	GX8401361	ADAPTER,280 JM FRAME ZCH2	1
6	SX8107642	SLEEVE,SHFT,4X3L,SS,JM FRM ZCH2	1
7	SI8107732	SCREW,32/43L/54P/3310,IMP,SS ZCH2 RCH2	1
8	GX5098700	SLINGER,1-23/32X3-3/4X 3/16 ZCH2	1
9	GX5106200	GASKET,3X2,CVR,CASING 10-1/8X 12-1/8 X 1/16 N-8090	1
10	GX5041400	GASKET,IMP SCRW,1-1/4X1-13/16 X1/32	1
	GX5041600	GASKET,1-1/4X1-3/4X1/32 1/4 KEYSLOT,SLV/IMP	1
12	SX8101072	SPLASHPLATE,280JM FRM ZCH2	1
13	GX5051200	KEY,IMPLR/SLV,2.0X.25X.25 304-SS	1
14	GS8108790	KIT,1-5/8,3X3,CE/CA/BU RCH2	1
	GS8108790-316SS	KIT,1-5/8,3X3,CE/CA/BU,316SS MET RCH2	1
	GS8108710	KIT,1-5/8,3X3,SC/CA/VI RCH2	1
	GS8111190-316SS	KIT,1-5/8,3X3,TC/SC/BU,316SS MET RCH2	1
17	GX5076700	CAPSCRW,HX,5/8-11X1-1/2,18-8SS HX HD	4
18	GX5077100	CAPSCRW,HX,3/8-16X1,18-8SS HX HD	8
21	GX5099300	O-RING,1-3/8X1-1/2X1/16,BUNA SLEEVE	1
	GX5099301	O-RING,T1 T21,1-5/8,EPDM,SLV (1-3/8 X 1-1/2 X 1/16)	1
	GX5099302	O-RING,33/43,VIT,FDA COMPL DCH3	1
22	SW8107682	RING,WEAR,3X2 4X3 L,SS,STUFF BX ZC2 ZCH2	1
23	SX8204232	STUFFING BOX,SS,JM,SGL SEAL ZCH2	1
24	GX5041900	GASKET,4X3X1/32,N-8090,STFBX STUFFING BOX	1
25	SX5107201	PLUG,PIPE,HEX HD,1IN,316SS RC2	1
26	GX5077100	CAPSCRW,HX,3/8-16X1,18-8SS HX HD	12
27	GX5077100	CAPSCRW,HX,3/8-16X1,18-8SS HX HD	4



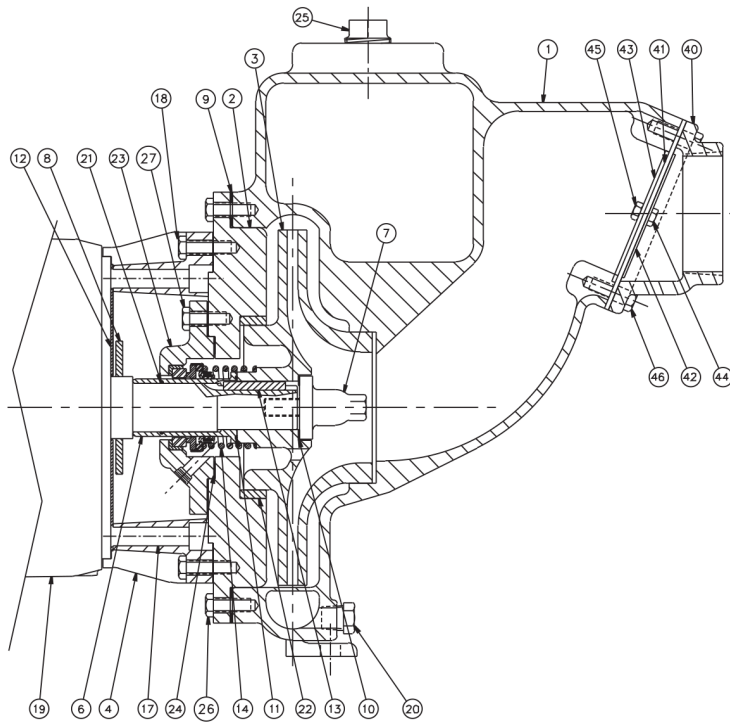
Ref #	Component
1	Casing
2	Cover
3	Impeller
4	Adapter
6	Shaft Sleeve
7	Impeller Screw
8	Slinger
9	Gasket, Casing
10	Gasket, Impeller Screw
11	Gasket Or O-Ring, Shaft Sleeve
12	Splashplate
13	Key, Impeller
14	Seal Kit
17	Capscrew (Motor/Adapter)
18	Capscrew (Casing/Adapter)
20	Plug, Drain
21*	O-Ring, Shaft Sleeve (Shaft/Sleeve)
22	Wear Ring
23	Stuffing Box
24	Gasket, Stuffing Box
25	Plug, Fill
26	Capscrew (Casing/Cover)
27	Capscrew (Cover/Stuffing Box)
40	Flapper Body
41	Flapper
42	Disc, Flapper, Round
43	Disc, Flapper, Flat Edge
44	Capscrew (Flapper Disc)
45	Locknut, (Flapper Disc)
46	Capscrew (Casing/Flapper Body)

\* RCH2 Only

**Exploded View**

*Optional Items Shown in ITALICS*

Ref #	Component Item No.	Description	Qty Per
40	SX8304272	VALVE,FLAPPER,BDY,3X3,SS RCH2	1
41	GX8108441	FLAPPER,33/337/3310,3IN RC2 RCH2	1
42	SX8108452	DISK,3IN,FLAPPER VLV-SM RC2	1
43	SX8108451	DISK,3IN,FLAPPER VLV,LG RC2	1
44	GX5079600	CAPSCRW,HX,1/4-20X1/2,18-8SS HX HD	1
45	GX5079602	LOCKNUT,1/4-20,18-8SS RC2 RCH2	1
46	GX5077100	CAPSCRW,HX,3/8-16X1,18-8SS HX HD	4



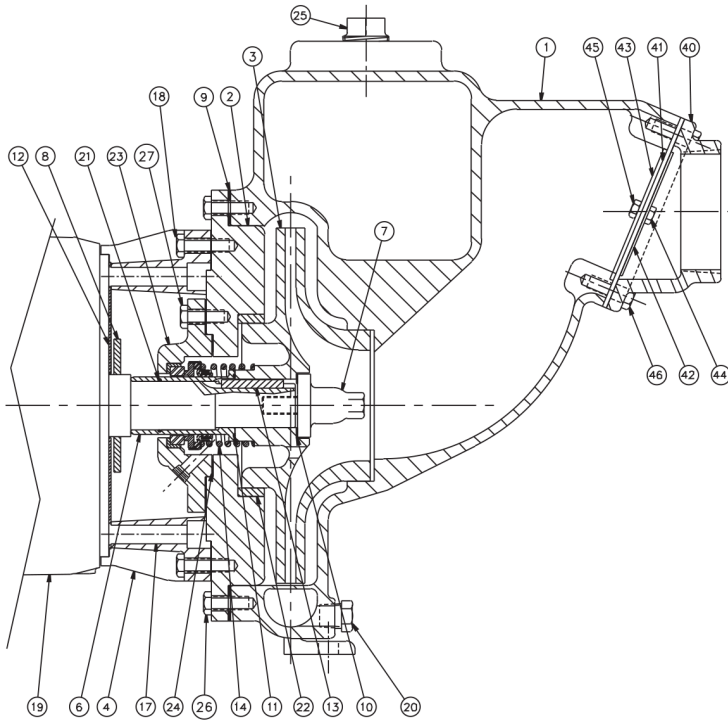
Ref #	Component
1	Casing
2	Cover
3	Impeller
4	Adapter
6	Shaft Sleeve
7	Impeller Screw
8	Slinger
9	Gasket, Casing
10	Gasket, Impeller Screw
11	Gasket Or O-Ring, Shaft Sleeve
12	Splashplate
13	Key, Impeller
14	Seal Kit
17	Capscrew (Motor/Adapter)
18	Capscrew (Casing/Adapter)
20	Plug, Drain
21*	O-Ring, Shaft Sleeve (Shaft/Sleeve)
22	Wear Ring
23	Stuffing Box
24	Gasket, Stuffing Box
25	Plug, Fill
26	Capscrew (Casing/Cover)
27	Capscrew (Cover/Stuffing Box)
40	Flapper Body
41	Flapper
42	Disc, Flapper, Round
43	Disc, Flapper, Flat Edge
44	Capscrew (Flapper Disc)
45	Locknut, (Flapper Disc)
46	Capscrew (Casing/Flapper Body)

\* RCH2 Only

**Exploded View**

*Optional Items Shown in ITALICS*

Ref #	Component Item No.	Description	Qty Per
1	SV8403192	CASING,3X3X7,SELF PRIME	1
2	SC8302581	COVER,3X2-1/2,SS DCH2	1
3	SI8302591	IMPELLER,3X2-1/2,SS (SEE NOTES) DCH2,ZCH2	1
4	GX8401251	ADAPTER,250 JM FRAME ZCH2	1
	<i>SX8401252</i>	<i>ADAPTER,250 JM FRAME,SS NS ZCH2</i>	<i>1</i>
6	SX8104421	SLEEVE,SHFT,SS ZCH2	1
7	SI8102722	SCREW,IMP,SS DCH2 RCH2 ZCH2	1
8	GX5098700	SLINGER,1-23/32X3-3/4X 3/16 ZCH2	1
9	GX5041200	GASKET,7-47/64X7-1/8X 1/32 ,N-8090	1
10	GX5099300	O-RING,1-3/8X1-1/2X1/16,BUNA SLEEVE	1
	<i>GX5099301</i>	<i>O-RING,T1 T21,1-5/8,EPDM,SLV (1-3/8 X 1-1/2 X 1/16)</i>	<i>1</i>
	<i>GX5099302</i>	<i>O-RING,33/43,VIT,FDA COMPL DCH3</i>	<i>1</i>
11	GX5099800	O-RING,1-5/8X1-3/4X1/16,BUNA SLEEVE	1
	<i>GX5099802</i>	<i>O-RING,T2 T21,1-5/8,EPDM,SLV (1-5/8 X 1-3/4 X 1/16)</i>	<i>1</i>
	<i>GX5099801</i>	<i>O-RING,33/43,VIT,FDA COMPL DCH3</i>	<i>1</i>
12	GX5091400	SPLASHPLATE,EC2/KC2/RC2/ZC2,SS FR213-256	1
13	GX5051200	KEY,IMPLR/SLV,2.0X.25X.25 304-SS	1
14	GS8111060	KIT,1-5/8,3X3X7,CE/CA/BU RCH2	1
17	GX5077500	CAPSCRW,SH,1/2-13X3,BLK OX SCKT HD	4
18	GX5077200	CAPSCRW,HX,3/8-16X1-1/4,18-8SS HX HD	8
20	GX5075600	PLUG,PIPE,3/8IN,SS RC2 ZC2 ZCH2	1
21	GX5099300	O-RING,1-3/8X1-1/2X1/16,BUNA SLEEVE	1
	<i>GX5099301</i>	<i>O-RING,T1 T21,1-5/8,EPDM,SLV (1-3/8 X 1-1/2 X 1/16)</i>	<i>1</i>
	<i>GX5099302</i>	<i>O-RING,33/43,VIT,FDA COMPL DCH3</i>	<i>1</i>
25	SX5107201	PLUG,PIPE,HEX HD,1IN,316SS RC2	1
40	SX8304272	VALVE,FLAPPER,BDY,3X3,SS RCH2	1
41	GX8108441	FLAPPER,33/337/3310,3IN RC2 RCH2	1



Ref #	Component
1	Casing
2	Cover
3	Impeller
4	Adapter
6	Shaft Sleeve
7	Impeller Screw
8	Slinger
9	Gasket, Casing
10	Gasket, Impeller Screw
11	Gasket Or O-Ring, Shaft Sleeve
12	Splashplate
13	Key, Impeller
14	Seal Kit
17	Capscrew (Motor/Adapter)
18	Capscrew (Casing/Adapter)
20	Plug, Drain
21*	O-Ring, Shaft Sleeve (Shaft/Sleeve)
22	Wear Ring
23	Stuffing Box
24	Gasket, Stuffing Box
25	Plug, Fill
26	Capscrew (Casing/Cover)
27	Capscrew (Cover/Stuffing Box)
40	Flapper Body
41	Flapper
42	Disc, Flapper, Round
43	Disc, Flapper, Flat Edge
44	Capscrew (Flapper Disc)
45	Locknut, (Flapper Disc)
46	Capscrew (Casing/Flapper Body)

\* RCH2 Only

**Exploded View**

*Optional Items Shown in ITALICS*

Ref #	Component Item No.	Description	Qty Per
42	SX8108452	DISK,3IN,FLAPPER VLV-SM RC2	1
43	SX8108451	DISK,3IN,FLAPPER VLV,LG RC2	1
44	GX5079603	CAPSCRW,HX,1/4-20X5/8,18-8SS HX HD	1
45	GX5079602	LOCKNUT,1/4-20,18-8SS RC2 RCH2	1
46	GX5077100	CAPSCRW,HX,3/8-16X1,18-8SS HX HD	4