

# **BALDOR**® • *RELIANCE*

## Product Information Packet

# **CSSEWDM3550T**

**1.5HP,3500RPM,3PH,60HZ,143TC,3532M,TENV**

| Part Detail |   |                |       |             |          |               |            |
|-------------|---|----------------|-------|-------------|----------|---------------|------------|
| Revision:   | S   | Status:        | PRD/A | Change #:   |          | Proprietary:  | No         |
| Type:       | AC  | Prod. Type:    | 3532M | Elec. Spec: | 35WGR929 | CD Diagram:   | CD0005     |
| Enclosure:  | TENV  | Mfg Plant:     |       | Mech. Spec: | 35Z200   | Layout:       | 35LYZ200   |
| Frame:      | 143TC   | Mounting:      | F1    | Poles:      | 02       | Created Date: | 01-18-2011 |
| Base:       | RG  | Rotation:      | R     | Insulation: | H        | Eff. Date:    | 11-01-2016 |
| Leads:      | 9#18 Dbl Dip & Bake,0#0 Phase Insulate,0#0 15" LEAD LENGY |                |       |             |          | Replaced By:  |            |
| Literature: |   | Elec. Diagram: |       |             |          |               |            |

|                            |              |  |             |            |                       |    |  |              |           |   |
|----------------------------|--------------|--|-------------|------------|-----------------------|----|--|--------------|-----------|---|
| <b>Nameplate NP1953A01</b> |              |  |             |            |                       |    |  |              |           |   |
| <b>CAT.NO.</b>             | CSSEWDM3550T |  |             |            |                       |    |  |              |           |   |
| <b>SPEC.</b>               | 35Z200R929G1 |  |             |            |                       |    |  |              |           |   |
| <b>HP</b>                  | 1.5          |  |             |            |                       |    |  |              |           |   |
| <b>VOLTS</b>               | 230/460      |  |             |            |                       |    |  |              |           |   |
| <b>AMP</b>                 | 3.6/1.8      |  |             |            |                       |    |  |              |           |   |
| <b>RPM</b>                 | 3500         |  |             |            |                       |    |  |              |           |   |
| <b>FRAME</b>               | 143TC        |  |             |            | <b>HZ</b>             | 60 |  |              | <b>PH</b> | 3 |
| <b>SER.F.</b>              | 1.15         |  | <b>CODE</b> | M          | <b>DES</b>            | B  |  | <b>CLASS</b> | H         |   |
| <b>NEMA-NOM-EFF</b>        | 85.5         |  |             | <b>PF</b>  | 90                    |    |  |              |           |   |
| <b>RATING</b>              | 40C AMB-CONT |  |             |            |                       |    |  |              |           |   |
| <b>CC</b>                  | 010A         |  |             |            | <b>USABLE AT 208V</b> |    |  | 3.7          |           |   |
| <b>DE</b>                  | 6205         |  |             | <b>ODE</b> | 6205                  |    |  |              |           |   |
| <b>ENCL</b>                | TENV         |  | <b>SN</b>   |            |                       |    |  |              |           |   |

| Parts List  |  |          |
|-------------|--|----------|
| Part Number | Description                              | Quantity |
| SA242943    | SA 35Z200R929G1                          | 1.000 EA |
| RA229844    | RA 35Z200R929G1                          | 1.000 EA |
| 11XW1032G06 | 10-32 X .38, TAPTITE II, HEX WSHR SLTD U | 1.000 EA |
| 35FE1917A10 | FREP TENV 205 BRG NO GRS 4X.125 NPT (SS) | 1.000 EA |
| RM1070A25   | O-RING,VITON 6.19 ID X .062 C.S. NOM     | 1.000 EA |
| HW4500A33   | 1/8 NPT STAINLESS,HOLO-KROME #13002,PRES | 3.000 EA |
| HW4500A33   | 1/8 NPT STAINLESS,HOLO-KROME #13002,PRES | 3.000 EA |
| HW5100A05   | WVY WSHR F/205 & 304 BRGS                | 1.000 EA |
| 35PE1916A05 | PUEP 56C ENC 205 BRG 4X.125 NPT (SS)     | 1.000 EA |
| RM1070A25   | O-RING,VITON 6.19 ID X .062 C.S. NOM     | 1.000 EA |
| HW4600E99   | AXIAL FACE SEAL 76925-9042-0447 SS CASE  | 1.000 EA |
| RM1070A26   | O-RING,4.5MM I.D.X1.5MM C.S. (VITON)     | 4.000 EA |
| 36GS3008SP  | WHITE NEOPREME KO BOX LID GASKET         | 1.000 EA |
| 35CB4515    | 35 CB LID #304 STAINLESS STEEL           | 1.000 EA |
| 59XN0832S07 | 8/32 X 7/16 HX WS HD SER X               | 4.000 EA |
| HW2502D13   | SS KEY, 3/16 SQ X 1.375                  | 1.000 EA |
| HA7000A01   | KEY RETAINER 7/8" DIA SHAFT              | 1.000 EA |
| MJ5001A27   | 32220KN GRAY SEALER *MIN BUY 4 QTS=1GAL  | 0.005 QT |
| MJ5004A37   | #76732 LOCTITE ANTISEIZE THRD COMPOUND   | 0.005 EA |
| HA5027A02   | HA4054 T-DRAIN X2 BAGGED WITH LABEL      | 1.000 EA |
| MJ1000A02   | GREASE, POLYREX EM EXXON (USe 4824-15A)  | 0.050 LB |
| WD5603A01   | KIT, CLOSED-END LEAD SPLICE (18-14GA)    | 1.000 EA |
| HA3100S05   | THRUBOLT - 10-32 X 10.125 302 OR 303     | 4.000 EA |
| 36PA1000    | PKG GRP, PRINT PK1016A06                 | 1.000 EA |

| <b>Parts List (continued)</b> |  |                 |
|-------------------------------|--|-----------------|
| <b>Part Number</b>            | <b>Description</b>                       | <b>Quantity</b> |
| MN416A01                      | TAG-INSTAL-MAINT no wire (1200/bx) 11/14 | 1.000 EA        |
| HA5027A07                     | 85XU1208S08 FACE DRAIN PINS BAGGED       | 1.000 EA        |

**AC Induction Motor Performance Data**

Record # 20333 - Typical performance - not guaranteed values

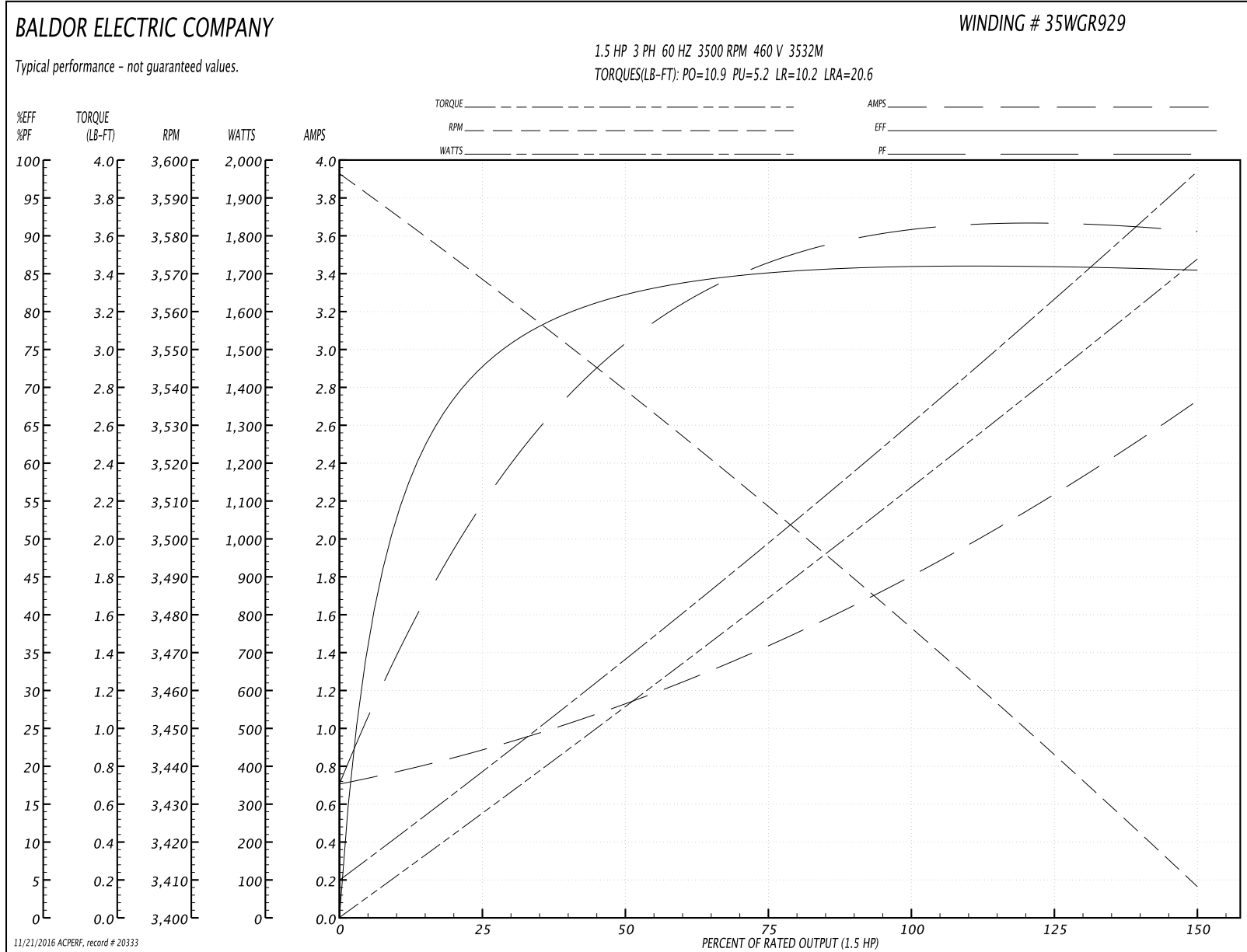
|                               |                    |                        |
|-------------------------------|--------------------|------------------------|
| <b>Winding:</b> 35WGR929-R003 | <b>Type:</b> 3532M | <b>Enclosure:</b> TENV |
|-------------------------------|--------------------|------------------------|

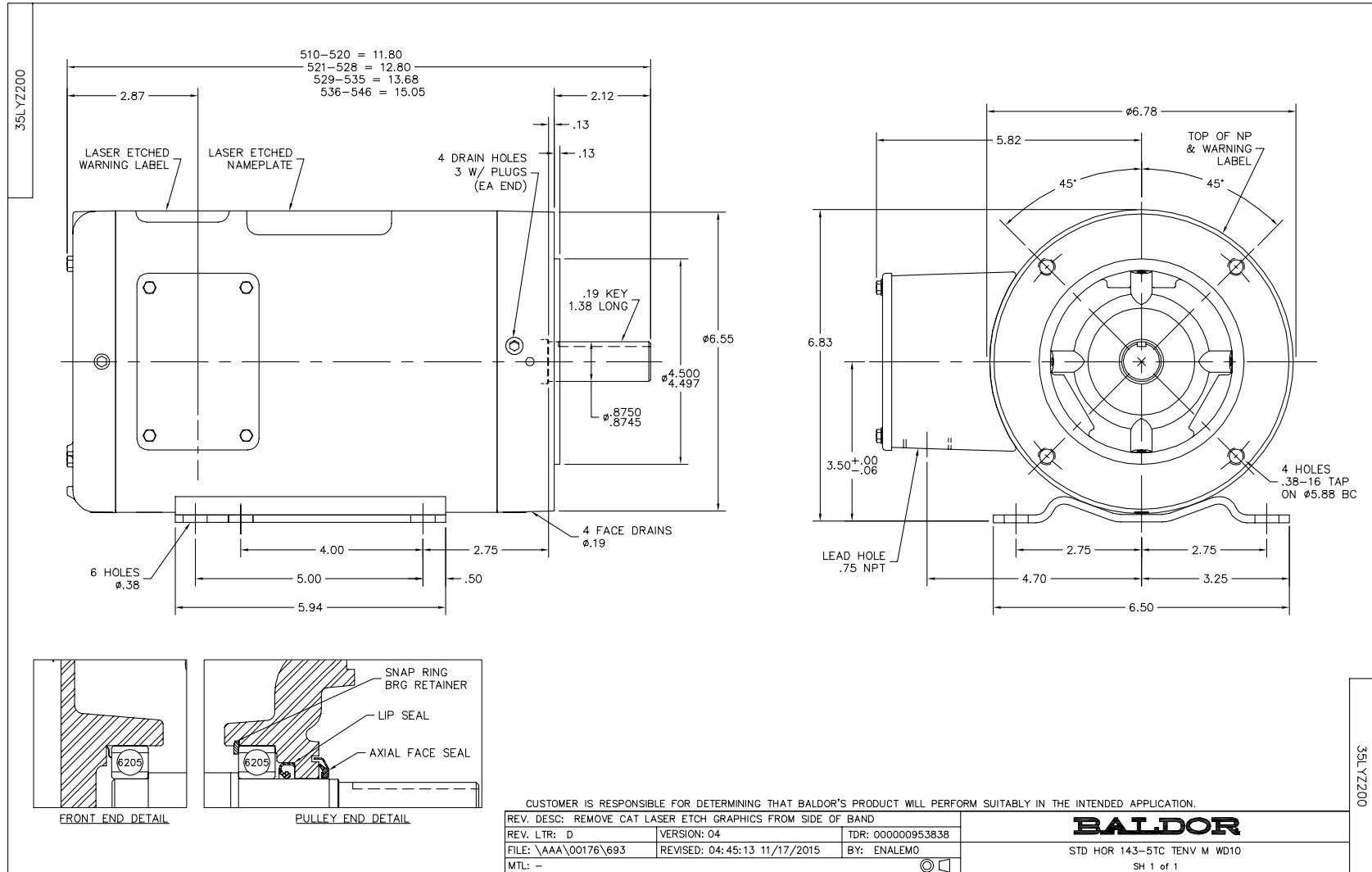
| Nameplate Data        |              |              |    | 460 V, 60 Hz:<br>High Voltage Connection |                           |
|-----------------------|--------------|--------------|----|--|---------------------------|
| Rated Output (HP)     | 1.5          |              |    | Full Load Torque                         | 2.31 LB-FT                |
| Volts                 | 208-230/460  |              |    | Start Configuration                      | direct on line            |
| Full Load Amps        | 3.7-3.6/1.8  |              |    | Breakdown Torque                         | 10.9 LB-FT                |
| R.P.M.                | 3500         |              |    | Pull-up Torque                           | 5.2 LB-FT                 |
| Hz                    | 60           | Phase        | 3  | Locked-rotor Torque                      | 10.2 LB-FT                |
| NEMA Design Code      | B            | KVA Code     | M  | Starting Current                         | 20.6 A                    |
| Service Factor (S.F.) | 1.15         |              |    | No-load Current                          | 0.694 A                   |
| NEMA Nom. Eff.        | 85.5         | Power Factor | 90 | Line-line Res. @ 25°C                    | 7.64 Ω                    |
| Rating - Duty         | 40C AMB-CONT |              |    | Temp. Rise @ Rated Load                  | 78°C                      |
| S.F. Amps             |              |              |    | Temp. Rise @ S.F. Load                   | 90°C                      |
|                       |              |              |    | Locked-rotor Power Factor                | 46                        |
|                       |              |              |    | Rotor inertia                            | 0.0885 LB-FT <sup>2</sup> |

Load Characteristics 460 V, 60 Hz, 1.5 HP

| % of Rated Load | 25    | 50   | 75   | 100  | 125  | 150  | S.F. |
|-----------------|-------|------|------|------|------|------|------|
| Power Factor    | 55    | 77   | 86   | 92   | 93   | 90   | 93   |
| Efficiency      | 73.8  | 82.3 | 85.2 | 86.1 | 85.9 | 85.5 | 86   |
| Speed           | 3564  | 3536 | 3507 | 3476 | 3444 | 3406 | 3457 |
| Line amperes    | 0.907 | 1.15 | 1.48 | 1.81 | 2.23 | 2.75 | 2.06 |

Performance Graph at 460V, 60Hz, 1.5HP Typical performance - Not guaranteed values





CD0005



LOW VOLTAGE  
(2Y)



LINE

HIGH VOLTAGE  
(1Y)



LINE

NOTES:

1. INTERCHANGE ANY TWO LINE LEADS TO REVERSE ROTATION.
2. OPTIONAL THERMOSTATS ARE PROVIDED WHEN SPECIFIED.
3. ACTUAL NUMBER OF INTERNAL PARALLEL CIRCUITS MAY BE A MULTIPLE OF THOSE SHOWN ABOVE.
4. LEAD COLORS ARE OPTIONAL. LEADS MUST ALWAYS BE NUMBERED AS SHOWN.

|   |         |                         |              |
|---|---------|-------------------------|--------------|
| REV. DESC: REVISE TO SHOW OPTIONAL COLORS |         |                         |              |
| REV. LTR: E                               | BY: JLP | REVISED: 01/19/99 10:15 | TDR: 0171435 |
| 9000D                                     |         | FILE: AAA00005140       | MDL: -       |
|   |         | MTL: -                  |              |

**BALDOR ELECTRIC Co.**

3PH, DV, 9 LEADS

CD0005