

# **BALDOR**® • **RELIANCE**

## **Product Information Packet**

# **ECP84313T-4**

**75HP,3555RPM,3PH,60HZ,365TS,TEFC,FOOT**

| Part Detail |       |                |         |             |           |               |            |
|-------------|-------|----------------|---------|-------------|-----------|---------------|------------|
| Revision:   | S     | Status:        | PRD/A   | Change #:   |           | Proprietary:  | No         |
| Type:       | AC    | Prod. Type:    | A36068M | Elec. Spec: | A36WG0179 | CD Diagram:   | 416820-036 |
| Enclosure:  | TEFC  | Mfg Plant:     |         | Mech. Spec: |           | Layout:       | 617428-001 |
| Frame:      | 365TS | Mounting:      | F1      | Poles:      | 02        | Created Date: | 10-19-2010 |
| Base:       |       | Rotation:      | RS      | Insulation: | F         | Eff. Date:    | 05-23-2016 |
| Leads:      | 3#2   |                |         |             |           | Replaced By:  |            |
| Literature: |       | Elec. Diagram: |         |             |           |               |            |

Nameplate 000613007EX

|                 |             |                          |            |      |
|-----------------|-------------|--------------------------|------------|------|
| CAT NO          | ECP84313T-4 | SPEC NO.                 | P36G5233   |      |
| NO. ROTOR BARS  | 38          | GREASE TYPE              | POLYREX EM |      |
| NO. SLOTS       | 48          | NL AMPS AT RATED VOLTAGE | 15.6       |      |
| 5 YEAR WARRANTY |             | WINDING RES @25 C        | .07452     | OHMS |
| MFG. DATE       |             | SER.NO                   |            |      |
|                 |             |                          |            |      |
|                 |             |                          |            |      |

| Nameplate NP3237   |             |                 |                  |               |                       |                     |      |      |      |        |             |   |
|--------------------|-------------|-----------------|------------------|---------------|-----------------------|---------------------|------|------|------|--------|-------------|---|
| CAT NO             | ECP84313T-4 | SPEC NO.        | P36G5233         |               |                       |                     |      |      |      |        |             |   |
| HP                 | 75          | AMPS            | 80.7             | VOLTS         | 460                   |                     |      |      |      |        |             |   |
| FRAME SIZE         | 365TS       | RPM             | 3555             | HZ            | 60                    | AMB                 | 40   | SF   | 1.15 | DESIGN | B           |   |
| D.E. BRG.DATA      | 6313        | O.D.E. BRG.DATA | 6313             |               | PH                    | 3                   |      | DUTY | CONT |        | INSUL.CLASS | F |
| D.E. BRG.          | 65BC03J30X  |                 | TYPE             | P             | ENCL                  | TEFC                |      | CODE | F    |        |             |   |
| O.D.E. BRG.        | 65BC03J30X  |                 | POWER FACTOR     | 92            |                       | NEMA-NOM-EFFICIENCY | 94.5 |      |      |        |             |   |
| 3/4 LOAD EFF.      | 95.4        | IP              | 56               | MAX CORR KVAR | 5                     |                     |      |      |      |        |             |   |
| TEMP CODE          | T3          | TEMP =          | 200              |               | GUARANTEED EFFICIENCY | 93.6                |      |      |      |        |             |   |
| CHP HZ             | 60-75       | CT HZ           | 15-60            |               | VT HZ                 | 0-60                |      |      |      |        |             |   |
| INVERTER-TEMP-CODE | T3          |                 | MOTOR WEIGHT 976 |               |                       |                     |      |      |      |        |             |   |
| SER.NO.            |             |                 |                  |               |                       |                     |      |      |      |        |             |   |

| Parts List  |  |          |
|-------------|--|----------|
| Part Number | Description                              | Quantity |
| SA206506    | SA P36G5233                              | 1.000 EA |
| RA193773    | RA P36G5233                              | 1.000 EA |
| 000613007EX | SS IEEE 841 EMBOSSED AUXILIARY NAMEPLATE | 1.000 EA |
| 000692000JP | N/P                                      | 1.000 EA |
| 000692000VD | LABEL WARNING                            | 1.000 EA |
| 000692000VH | N/P                                      | 1.000 EA |
| 004824015A  | GREASE POLYREX EM                        | 0.544 LB |
| 032018008AK | HHCS 1/4-20X1 PLATED                     | 4.000 EA |
| 032018012DK | HHCS 1/2-13X1-1/2 PLTD.                  | 4.000 EA |
| 032018024CK | HHCS 3/8-16X3 PLTD.                      | 3.000 EA |
| 034180012DA | KEY 1X4X1/4X1-1/2 L                      | 1.000 EA |
| 034530032BB | P/NIP 1/4X4" SCHED 40                    | 1.000 EA |
| 034530052AB | P/NIP 1/8X6-1/2 GALV.                    | 1.000 EA |
| 034600001AA | BUSH 1/4TO1/8 BLACK                      | 1.000 EA |
| 034630002AB | CPLG 1/4" PLATED                         | 1.000 EA |
| 085922083BH | BRKT 360 085922072WCC KB                 | 1.000 EA |
| 412118006A  | DRAIN                                    | 1.000 EA |
| 415028008E  | INPRO SEAL - 360                         | 1.000 EA |
| 415096002A  | CPLG 1/8 HEX TYPE                        | 1.000 EA |
| 423709011C  | WASHER                                   | 3.000 EA |
| 078559034A  | +F/C A 078559001A - 360                  | 1.000 EA |
| 410700004F  | WSHR                                     | 1.000 EA |
| 415072001B  | CLAMP                                    | 1.000 EA |
| 702675001C  | FAN 360                                  | 1.000 EA |

| Parts List (continued) |                                       |          |
|------------------------|---------------------------------------|----------|
| Part Number            | Description                           | Quantity |
| 032018012DK            | HHCS 1/2-13X1-1/2 PLTD.               | 4.000 EA |
| 032018024CK            | HHCS 3/8-16X3 PLTD.                   | 3.000 EA |
| 034530020BB            | P/NIP 1/4X2-1/2 PLATED                | 1.000 EA |
| 034530032AB            | P/NIP 1/8X4 PLATED                    | 1.000 EA |
| 034600001AA            | BUSH 1/4TO1/8 BLACK                   | 1.000 EA |
| 034630002AB            | CPLG 1/4" PLATED                      | 1.000 EA |
| 035000001G             | GREASE RELIEF FITTING, ALEMITE 317400 | 1.000 EA |
| 085922083BH            | BRKT 360 085922072WCC KB              | 1.000 EA |
| 412118006A             | DRAIN                                 | 1.000 EA |
| 415028008E             | INPRO SEAL - 360                      | 1.000 EA |
| 415096002A             | CPLG 1/8 HEX TYPE                     | 1.000 EA |
| 423709011C             | WASHER                                | 3.000 EA |
| 035000001G             | GREASE RELIEF FITTING, ALEMITE 317400 | 1.000 EA |
| 032018010CK            | HHCS 3/8-16X1-1/4 PLTD.               | 4.000 EA |
| 033512008LB            | HHTTS 1/4-20X1 PLATED                 | 4.000 EA |
| 034000014AB            | WSH ID.406 OD.812 TH.065              | 4.000 EA |
| 035000001A             | ALFTG 1/8" 1610-BL                    | 1.000 EA |
| 035000001A             | ALFTG 1/8" 1610-BL                    | 1.000 EA |
| 067053000B             | GASK 320-400                          | 1.000 EA |
| 076708000BB            | C/B - 360                             | 1.000 EA |
| 076709000A             | C/B - 360                             | 1.000 EA |
| 406099000A             | PLUG - FAN COVER 320-440              | 1.000 EA |
| 415000103H             | TERMINAL LUG                          | 1.000 EA |
| 415039016A             | TERBD, 360-400                        | 1.000 EA |

Product Information Packet: ECP84313T-4 - 75HP,3555RPM,3PH,60HZ,365TS,TEFC,FOOT

|              |  |          |
|--------------|--|----------|
| 418150003A   | GREASE FITTING CAP                     | 1.000 EA |
| 418150003A   | GREASE FITTING CAP                     | 1.000 EA |
| 033775004EA  | DRSCR #6-1/4 304 S.S.                  | 4.000 EA |
| 034180016GA  | KEY 1/2X1/2X2 L                        | 1.000 EA |
| MG1025N19    | WILKO 778.50 BLUE GREEN - 55 GAL DRUMS | 0.250 GA |
| 004824003CBY | WILKO PAINT 060.02 - ACTIVATOR         | 0.063 GA |
| 482403003BEF | RUST VETO 342                          | 0.013 GA |
| MG1500G03-5  | LACQUER PRIMER, GRAY                   | 0.063 GA |
| 421948051    | LABEL, MYLAR                           | 1.000 EA |
| 14PA1000     | PACKAGING 314 GROUP COMBINED PRINT     | 1.000 EA |
| LB1449       | DIV-2/NEC WARNING LABEL                | 1.000 EA |
| NP3237       | SS SUPER E INVERTER DUTY IEEE 841      | 1.000 EA |
| 000613006PU  | N/P (RELEASE QTY 10,000) UL CSA LABLE  | 1.000 EA |
| 032018005DL  | 1/2-13 X 5/8 SILICON BRONZE HHCS       | 1.000 EA |

|           |             |                |           |   |             |       |
|-----------|-------------|----------------|-----------|---|-------------|-------|
| REL. S.O. | FRAME       | HP             | TYPE      | PHASE/ HERTZ                            | RPM         | VOLTS |
|           | 365TS       | 75             | P         | 3/60                                    | 3555        | 460   |
| AMPS      | DUTY        | AMB °C/ INSUL. | S.F.      | NEMA DESIGN                             | CODE LETTER | ENCL. |
| 80.7      | CONT        | 40/F           | 1.15      | B                                       | F           | TEFC  |
| E/S       | ROTOR       | TEST S.O.      | TEST DATE | STATOR RES. @25 °C OHMS (BETWEEN LINES) |             |       |
| 892018    | 418141005TE | ---            | ---       | .0744                                   |             |       |

PERFORMANCE

| LOAD    | HP   | AMPERES | RPM  | POWER FACTOR % | EFFICIENCY % |
|---------|------|---------|------|----------------|--------------|
| NO LOAD | 0    | 15.5    | 3600 | 7.78           | 0            |
| 1/4     | 18.8 | 24.4    | 3589 | 77.5           | 92.8         |
| 2/4     | 37.6 | 40.7    | 3579 | 90.8           | 95.1         |
| 3/4     | 56.2 | 59.9    | 3568 | 92.1           | 95.4         |
| 4/4     | 75.0 | 80.7    | 3556 | 91.5           | 95.0         |
| 5/4     | 93.8 | 102     | 3543 | 90.9           | 94.4         |

SPEED TORQUE

|              | RPM  | TORQUE % FULL LOAD | TORQUE LB.-FT. | AMPERES |
|--------------|------|--------------------|----------------|---------|
| LOCKED ROTOR | 0    | 218                | 242            | 494     |
| PULL UP      | 1565 | 190                | 210            | 440     |
| BREAKDOWN    | 3395 | 228                | 253            | 259     |
| FULL LOAD    | 3556 | 100                | 111            | 80.7    |

AMPERES SHOWN FOR 460. VOLT CONNECTION. IF OTHER VOLTAGE CONNECTIONS ARE AVAILABLE, THE AMPERES WILL VARY INVERSELY WITH THE RATED VOLTAGE

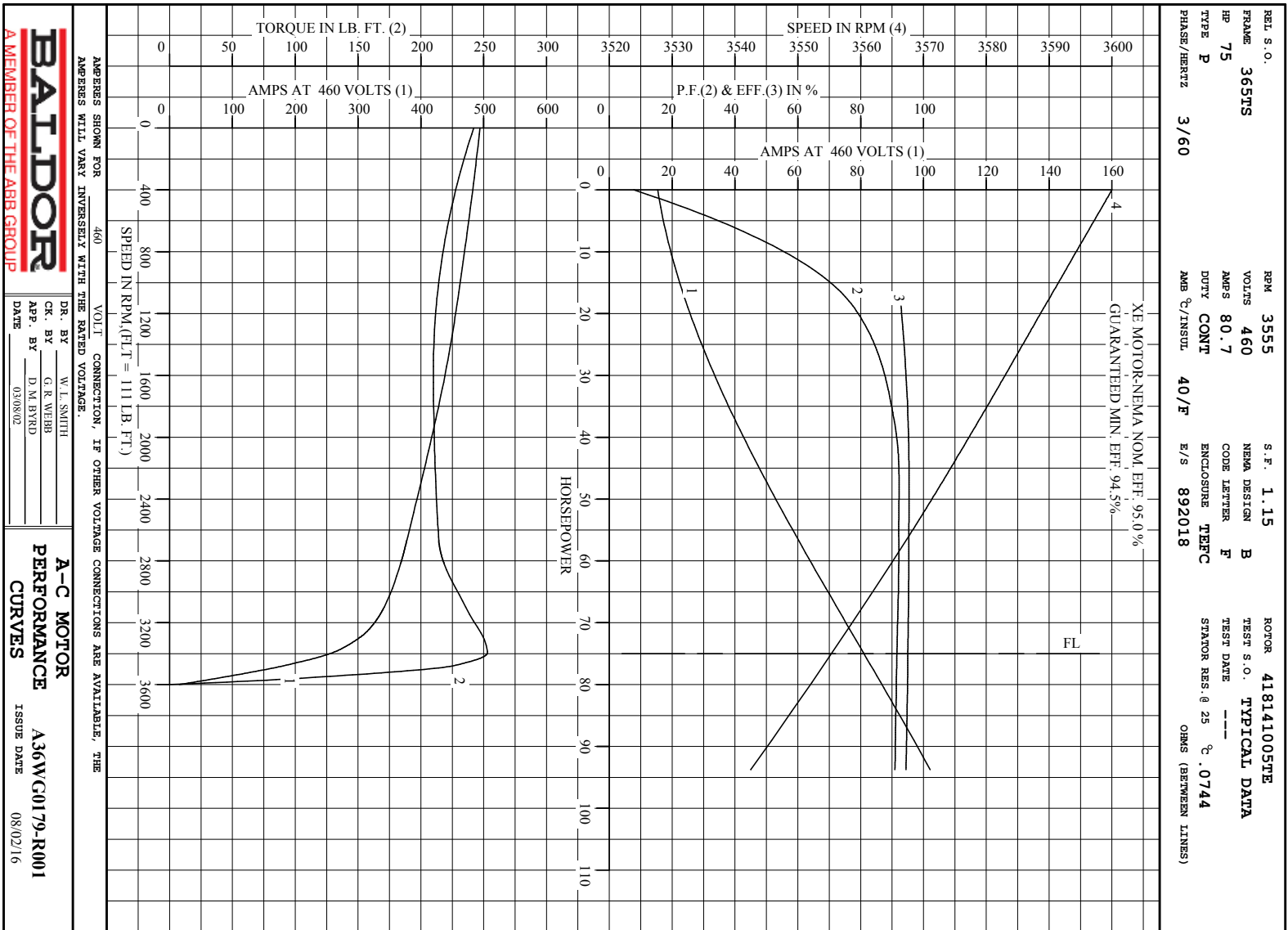
REMARKS: TYPICAL DATA  
 XE MOTOR-NEMA NOM. EFF. 95.0 %  
 GUARANTEED MIN. EFF. 94.5%



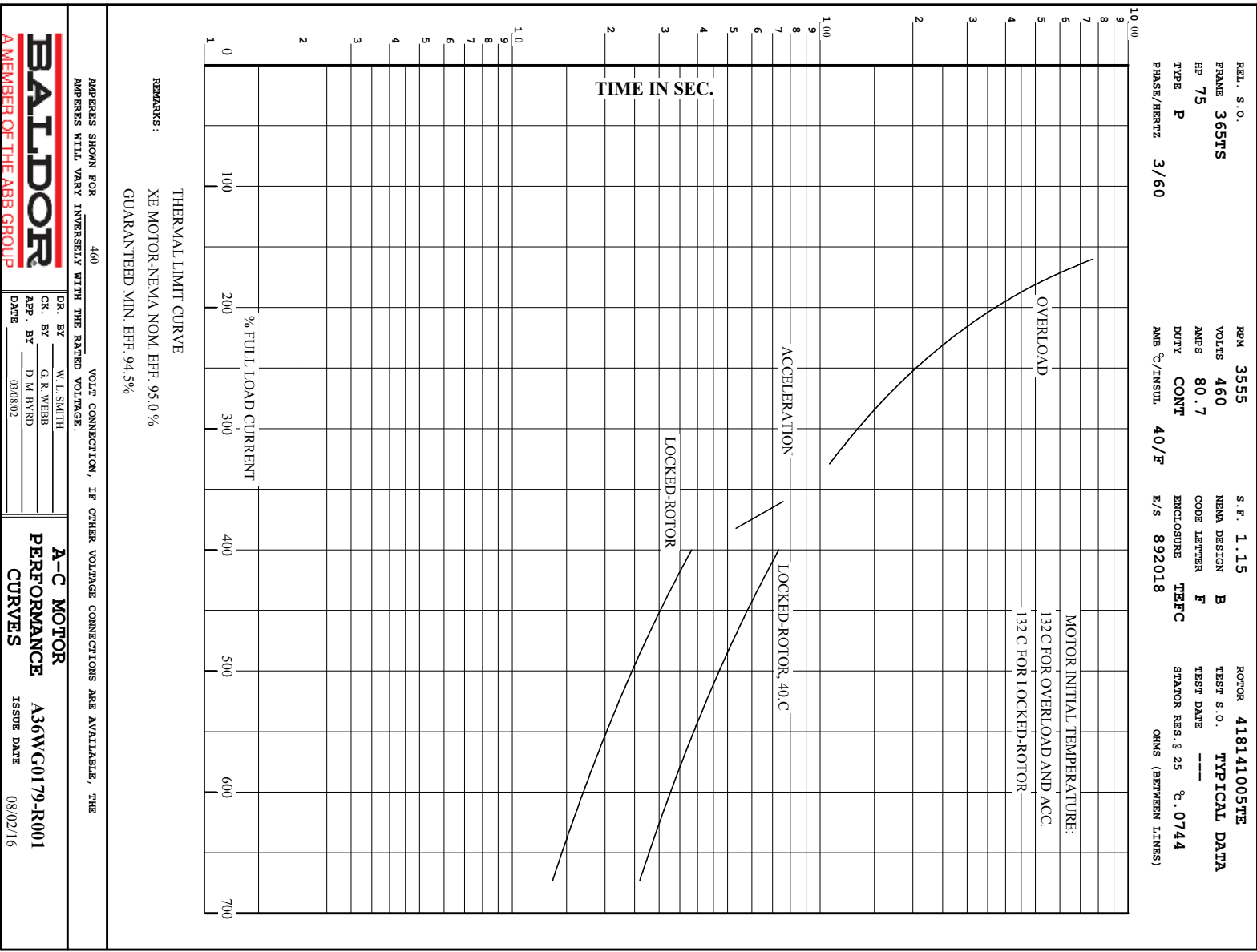
DR. BY W. I. SMITH  
 CK. BY G. R. WEBB  
 APP. BY D. M. BYRD  
 DATE 02/08/02

A-C MOTOR  
 PERFORMANCE DATA  
 A36WG0179-R001  
 ISSUE DATE 08/02/16

A MEMBER OF THE ABB GROUP



Printed on 8/2/16 10:26 @ bengap01.baldor.com



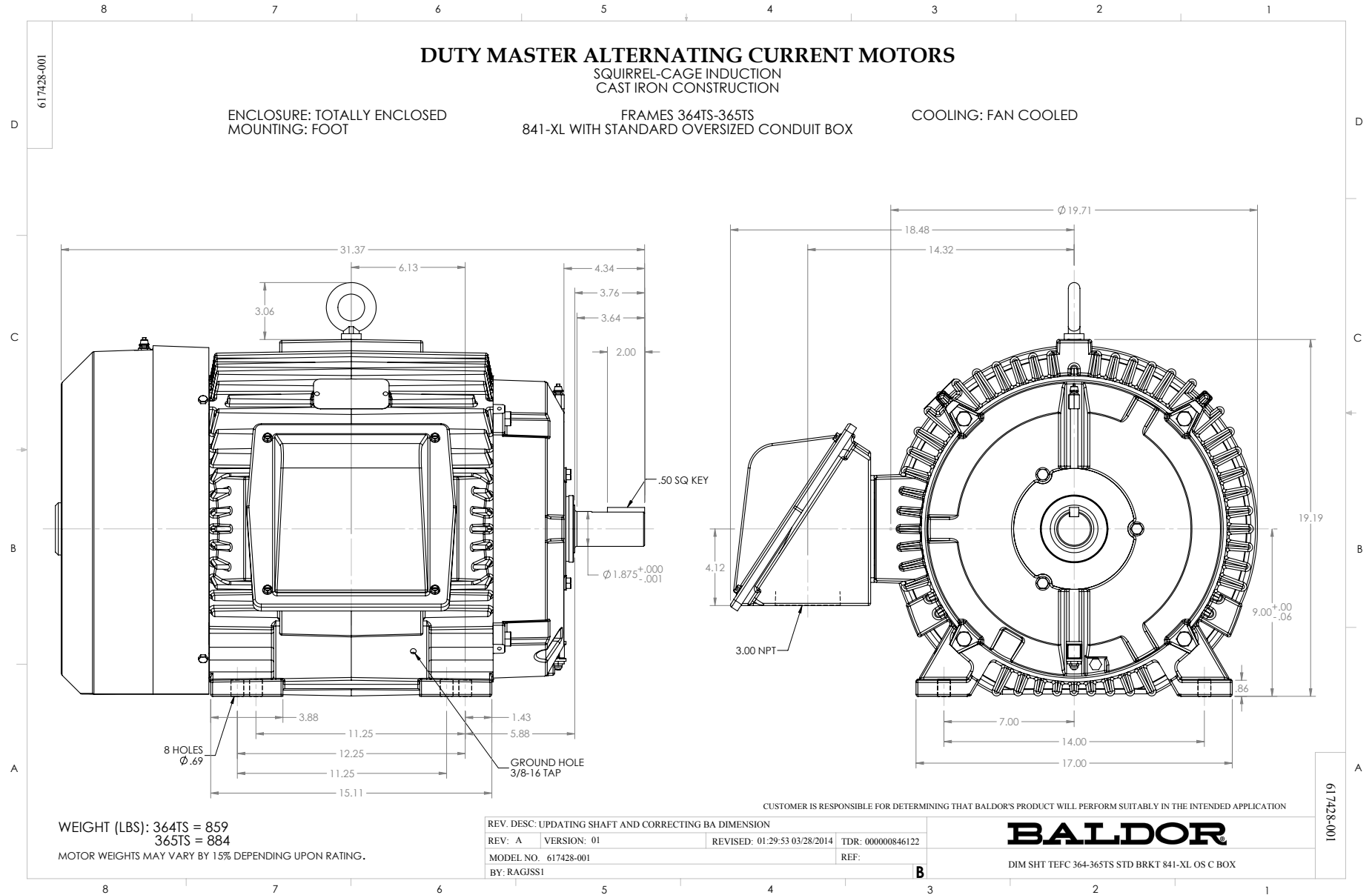
REMARKS: THERMAL LIMIT CURVE  
 XE MOTOR-NEMA NOM. EFF. 95.0 %  
 GUARANTEED MIN. EFF. 94.5%

AMPERES SHOWN FOR 460 VOLT CONNECTION, IF OTHER VOLTAGE CONNECTIONS ARE AVAILABLE, THE AMPERES WILL VARY INVERSELY WITH THE RATED VOLTAGE.



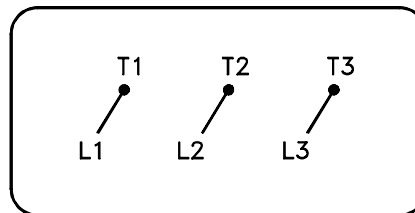
DR. BY W. L. SMITH  
 CK. BY G. R. WEBB  
 APP. BY D. M. BYRD  
 DATE 08/02/16

**A-C MOTOR PERFORMANCE CURVES**  
 A36WC0179-R001  
 ISSUE DATE 08/02/16



416820-036

A-C MOTOR  
 CONNECTION DIAGRAM  
 STANDARD 3 LEAD CONNECTED



(N.P. 1575-BA)

416820-036

|                                      |                              |                   |
|--------------------------------------|------------------------------|-------------------|
| REV. DESC: LOADED TO BUS, C/R 335225 |                              |                   |
| REV. LTR: -                          | VERSION: 00                  | TDR: 000000538207 |
| FILE: \MGA\00000\682                 | REVISED: 11:54:06 04/30/2010 |                   |
| MTL: -                               | BY: RAGRA                    |                   |

**BALDOR**

CONN DIAG - STANDARD 3 LEAD

SH 1 of 1

Marketing maintained PDF of MN408:

<http://www.baldor.com/support/Literature/Load.ashx/MN408?ManNumber=MN408>

Marketing maintained PDF of MN416:

<http://www.baldor.com/support/Literature/Load.ashx/MN416?ManNumber=MN416>