

# **BALDOR® • RELIANCE**

## **Product Information Packet**

### **JSL525A**

**1HP,3450RPM,1PH,60HZ,56Y,3424L,OPEN,F1,N**

Part Detail							
Revision:	G	Status:	PRD/A	Change #:		Proprietary:	No
Type:	AC	Prod. Type:	3424L	Elec. Spec:	34WGR051	CD Diagram:	CD0203
Enclosure:	OPEN	Mfg Plant:		Mech. Spec:	34M226	Layout:	34LYM226
Frame:	56Y	Mounting:	F1	Poles:	02	Created Date:	05-08-2013
Base:	N	Rotation:	FOS	Insulation:	B	Eff. Date:	08-26-2016
Leads:	5#16,1#14 #1TH					Replaced By:	
Literature:		Elec. Diagram:					

Nameplate NP1257L										
CAT.NO.	JSL525A									
SPEC.	34M226R051G1									
HP	1									
VOLTS	115/230									
AMP	12.6/6.3									
RPM	3450									
FRAME	56Y					HZ	60		PH	1
SER.F.	1.40		CODE	K		DES	-		CL	B
NEMA-NOM-EFF	70		PF	74						
RATING	40C AMB-CONT									
CC						USABLE AT 208V	7.5			
DE	6203		ODE	6203						
ENCL	OPEN		SN							
	SFA 15.8/7.9									

Parts List		
Part Number	Description	Quantity
SA262774	SA 34M226R051G1	1.000 EA
RA249498	RA 34M226R051G1	1.000 EA
TPCRJ49CY	THERMAL 1PH 1.00 AUT 120C	1.000 EA
EC1340A03	ELEC CAP, 340-408 MFD, 125V, 1.81D X 3.	1.000 EA
51XB1016A05	10-16X5/16HX WA SL SR TYB (F/S)	1.000 EA
WD1000B16	T&B CX70TN TERMINAL	1.000 EA
11XT0832G06	8-32 X 3/8 TY 23 TAPPING	1.000 EA
51XW0832A07	8-32 X .44, TAPTITE II, HEX WSHR SLTD SE	3.000 EA
WD1000A16	2-520128-2 AMP FLAG TERMINAL(4M/RL)	1.000 EA
NS2501A01	INSULATOR, CAPACITOR	1.000 EA
51XB1016A05	10-16X5/16HX WA SL SR TYB (F/S)	2.000 EA
WD4100A01	DP-875 HEYCO PLUG OR 62MP0875 MICRO PLAS	1.000 EA
WD4100A04	62MP0687 HOLE PLUG OR DP-687 HEYCO	1.000 EA
HW5100A03SP	WAVY WASHER (W1543-017)	1.000 EA
34EP3501A03	ENDPLATE, MACH POOL PUMP 17 FRAME-ASSY/K	1.000 EA
HA1005A05SP	SLINGER, OD 1.50, ID .659, 203 BRG	1.000 EA
51XN1032A20	10-32 X 1 1/4 HX WS SL SR	2.000 EA
34AD2007	BAFFLE PLATE INJECTION MOLD	1.000 EA
12XF0632A06	6-32X3/8 TY F HEX HD SLT	4.000 EA
34CB4501SP	TERMINAL BOX LID, STAMPED X (PLATED)	1.000 EA
34GS1018	GASKET, TERM PLATE LID BLACK NEOPRENE	1.000 EA
51XW0832A07	8-32 X .44, TAPTITE II, HEX WSHR SLTD SE	2.000 EA
RM1010A12	.437 I.D. 1" VINYL CAP (SHORT) MOCAP	1.000 EA
LB1009N	LABEL,ROTATION DIRECTION (ON ROLLS)	1.000 EA

<b>Parts List (continued)</b>		
<b>Part Number</b>	<b>Description</b>	<b>Quantity</b>
MG1000G27	MED CHARCOAL METALLIC GREY 400-0096	0.014 GA
10XF0440S02	04-40 X 1/8 TYPE F HEX HD STAINLESS STIC	2.000 EA
34EP3202A07	FR ENDPLATE, MACH	1.000 EA
33CB4800A02	CAPACITOR COVER, STAMPED	1.000 EA
35GS3003A02	1/16" NEOPRENE BOX GASKET FT. SMITH MADE	1.000 EA
HA3100A22	THRUBOLT 10-32 X 10.125	4.000 EA
SP5086A01	MODEL 34 TERMINAL PANEL SWITCH WITH LEAD	1.000 EA
LC0546	CONNECTION LABEL	1.000 EA
LB1118	LABEL,WARNING (ROLL LABEL)	1.000 EA
MN416A01	TAG-INSTAL-MAINT no wire (1200/bx) 11/14	1.000 EA
NP1257L	ALUM UL CSA CC THERMAL REV MTG	1.000 EA
PK3083T	STYROFOAM PACKING CRADLE W/TAPE	1.000 EA
35PA1066	PKG GRP, PRINT PK1008A06	1.000 EA

**AC Induction Motor Performance Data**

Record # 42892 - Typical performance - not guaranteed values

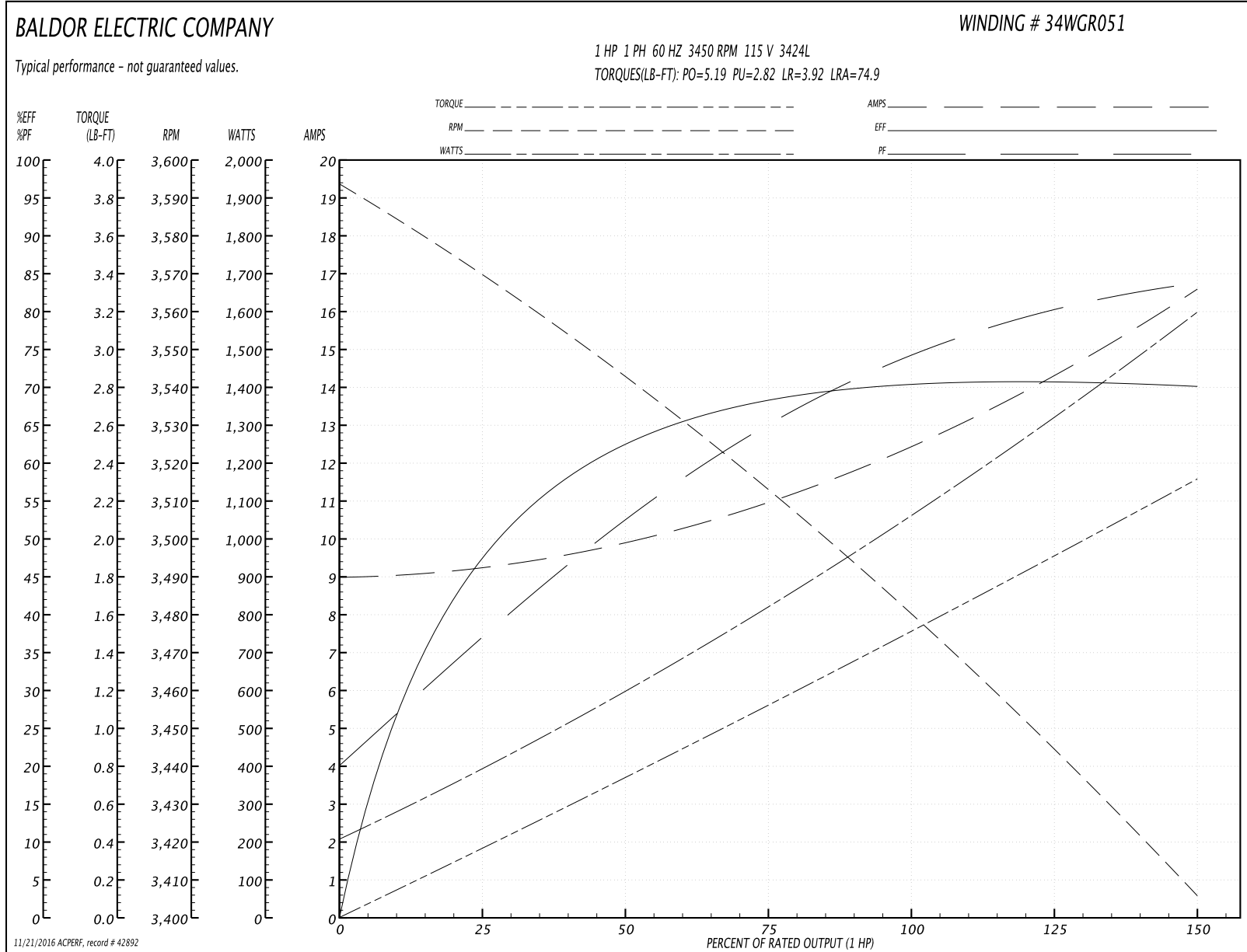
<b>Winding:</b> 34WGR051-R001	<b>Type:</b> 3424L	<b>Enclosure:</b> OPEN
-------------------------------	--------------------	------------------------

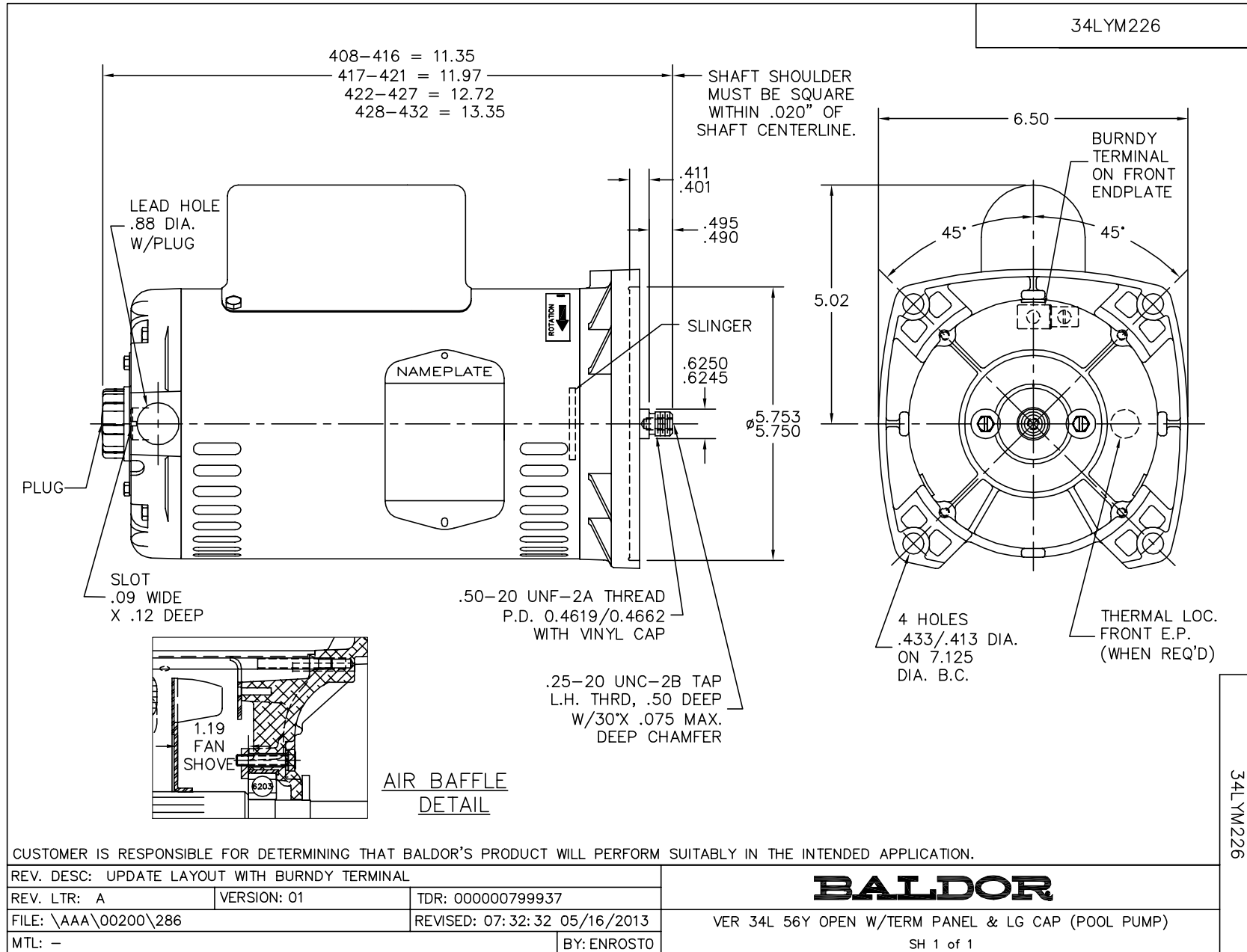
Nameplate Data				115 V, 60 Hz: Low Voltage Connection	
Rated Output (HP)	1			Full Load Torque	1.52 LB-FT
Volts	115/230			Start Configuration	direct on line
Full Load Amps	12.6/6.3			Breakdown Torque	5.19 LB-FT
R.P.M.	3450			Pull-up Torque	2.82 LB-FT
Hz	60	Phase	1	Locked-rotor Torque	3.92 LB-FT
NEMA Design Code	-	KVA Code	K	Starting Current	74.9 A
Service Factor (S.F.)	1.4			No-load Current	8.99 A
NEMA Nom. Eff.	70	Power Factor	74	Line-line Res. @ 25°C	0.41913 Ω A Ph 1.2803 Ω B Ph
Rating - Duty	40C AMB-CONT			Temp. Rise @ Rated Load	32°C
S.F. Amps	15.8/7.9			Temp. Rise @ S.F. Load	46°C

Load Characteristics 115 V, 60 Hz, 1 HP

% of Rated Load	25	50	75	100	125	150	S.F.
Power Factor	38	53	66	74	80	85	83
Efficiency	47.2	61.9	68.5	70.7	70.8	69.8	70.2
Speed	3565.2	3540.5	3512.2	3481.8	3448.7	3402.1	3421
Line amperes	9.26	9.87	11	12.5	14.3	16.6	15.7

Performance Graph at 115V, 60Hz, 1.0HP Typical performance - Not guaranteed values





CD0203

