

BALDOR® • ***RELIANCE***

Product Information Packet

L5023T

1HP,1725RPM,1PH,60HZ,143T,3528L,XPFC,F1

Part Detail							
Revision:	J	Status:	PRD/A	Change #:		Proprietary:	No
Type:	AC	Prod. Type:	3528L	Elec. Spec:	35WGN637	CD Diagram:	CD0001
Enclosure:	XPFC	Mfg Plant:		Mech. Spec:	35J659	Layout:	35LYJ659
Frame:	143T	Mounting:	F1	Poles:	04	Created Date:	12-05-2012
Base:	RG	Rotation:	R	Insulation:	B	Eff. Date:	07-18-2016
Leads:	6#18					Replaced By:	
Literature:		Elec. Diagram:					

Nameplate NP0015XPSL	
NO.	<input type="text"/>
SER.	<input type="text"/>
SPEC.	35J659N637G1
CAT.NO.	L5023T
HP	1
VOLTS	115/208-230
AMPS	11.8/6.3-5.9
RPM	1725
HZ	60
SER.F.	1.00
RATING	40C AMB-CONT
FRAME	143T
USABLE AT 208V	<input type="text"/>
BLANK	<input type="text"/>

CC	<input type="text"/>
T. CODE	T2C
PH	1
CL	B
DES	L
CODE	K
NEMA-NOM-EFF	72
PF	77

Parts List		
Part Number	Description	Quantity
SA255206	SA 35J659N637G1	1.000 EA
RA242011	RA 35J659N637G1	1.000 EA
EC1324A02	ELEC CAP, 324-389 MFD, 125V, 1.48D X 3.	2.000 EA
35CB3001A02SP	EXPL PROOF CONDUIT BOX, 3/4"PIPE TAP LEA	1.000 EA
11XW1032G06	10-32 X .38, TAPTITE II, HEX WSHR SLTD U	1.000 EA
HW3001B01	BRASS CUP WASHER, FOR #8 SCREW	1.000 EA
35EP3700A01SP	FR ENDPLATE, XPFC	1.000 EA
51XW0832A07	8-32 X .44, TAPTITE II, HEX WSHR SLTD SE	2.000 EA
HW5100A03SP	WAVY WASHER (W1543-017)	1.000 EA
35EP3701A01	PU ENDPLATE, XPFC - 205 BRG	1.000 EA
XY3118A12	5/16-18 HEX NUT DIRECTIONAL SERRATION	4.000 EA
51XB1214A16	12-14X1.00 HXWSSLD SERTYB	1.000 EA
35FH4005A01SP	IEC FH NO GREASER W/PRIMED	1.000 EA
51XW1032A06	10-32 X .38, TAPTITE II, HEX WSHR SLTD S	3.000 EA
35CB3500A01SP	CONDUIT BOX LID, MACH	1.000 EA
51XN2520A16	SCREW, HEX WS SLT, ZN, 1/4-20 X 1.00	4.000 EA
HW2501D13	KEY, 3/16 SQ X 1.375	1.000 EA
HA7000A01	KEY RETAINER 7/8" DIA SHAFT	1.000 EA
85XU0407S04	4X1/4 U DRIVE PIN STAINLESS	6.000 EA
NP0018F	ALUM UL XP CONDUIT BOX NAMEPLATE	1.000 EA
51XW0832A07	8-32 X .44, TAPTITE II, HEX WSHR SLTD SE	2.000 EA
HA6003A52	CLAMP, CAPACITOR, WHITE ZINC PLATED	2.000 EA
MJ1000A02	GREASE, POLYREX EM EXXON (USe 4824-15A)	0.050 LB
MG1025G29	WILKOFAS, 789.229, DARK CHARCOAL GRAY	0.017 GA

Parts List (continued)		
Part Number	Description	Quantity
35FN3002A05	EXFN, PLASTIC, 6.376 OD, .638 ID	1.000 EA
HA3104A08	THRUBOLT-5/16-18X9.375 X X	4.000 EA
SP5051A64	MODEL 35 TORQ STATIONARY SWITCH FOR XP	1.000 EA
LB1119N	WARNING LABEL	1.000 EA
LC0081	CONNECTION LABEL X	1.000 EA
NP0015XPSL	SS XP UL CSA CC CL-I GP-D	1.000 EA
36PA1000	PKG GRP, PRINT PK1016A06	1.000 EA
MN416A01	TAG-INSTAL-MAINT no wire (1200/bx) 11/14	1.000 EA

AC Induction Motor Performance Data

Record # 40779 - Typical performance - not guaranteed values

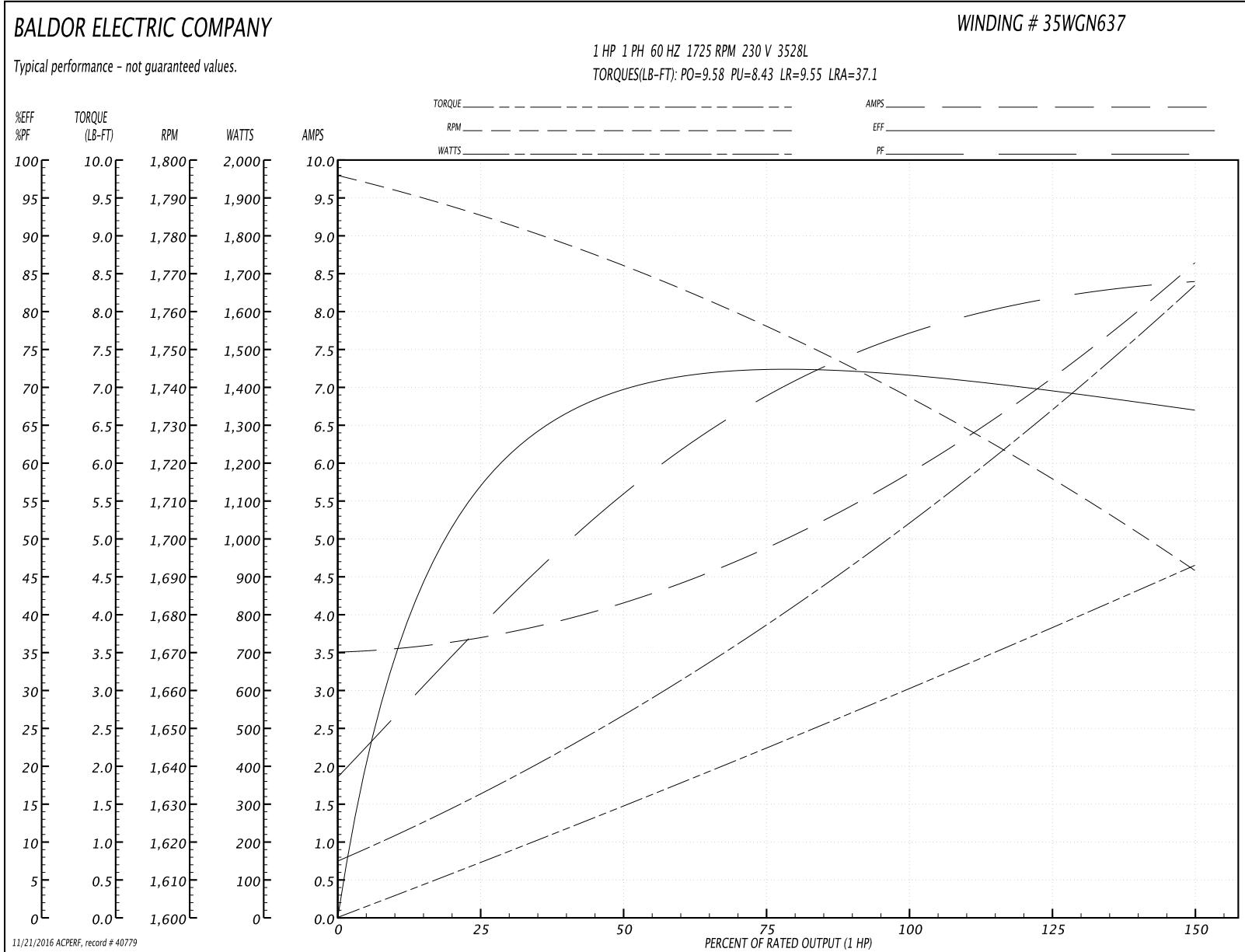
Winding: 35WGN637-R001	Type: 3528L	Enclosure: TEFC
-------------------------------	--------------------	------------------------

Nameplate Data				230 V, 60 Hz: High Voltage Connection	
Rated Output (HP)	1			Full Load Torque	3.02 LB-FT
Volts	115/208-230			Start Configuration	direct on line
Full Load Amps	11.8/6.3-5.9			Breakdown Torque	9.58 LB-FT
R.P.M.	1725			Pull-up Torque	8.43 LB-FT
Hz	60	Phase	1	Locked-rotor Torque	9.55 LB-FT
NEMA Design Code	L	KVA Code	K	Starting Current	37.1 A
Service Factor (S.F.)	1			No-load Current	3.5 A
NEMA Nom. Eff.	72	Power Factor	77	Line-line Res. @ 25°C	2.4797 Ω A Ph 1.1184 Ω B Ph
Rating - Duty	40C AMB-CONT			Temp. Rise @ Rated Load	63°C

Load Characteristics 230 V, 60 Hz, 1 HP

% of Rated Load	25	50	75	100	125	150
Power Factor	39	56	69	77	81	85
Efficiency	56.3	68.2	71.6	72.2	70.7	66.4
Speed	1783.5	1770.9	1755.8	1739.2	1718.6	1689.5
Line amperes	3.68	4.16	4.92	5.86	7.03	8.69

Performance Graph at 230V, 60Hz, 1.0HP Typical performance - Not guaranteed values



AC Induction Motor Performance Data

Record # 40780 - Typical performance - not guaranteed values

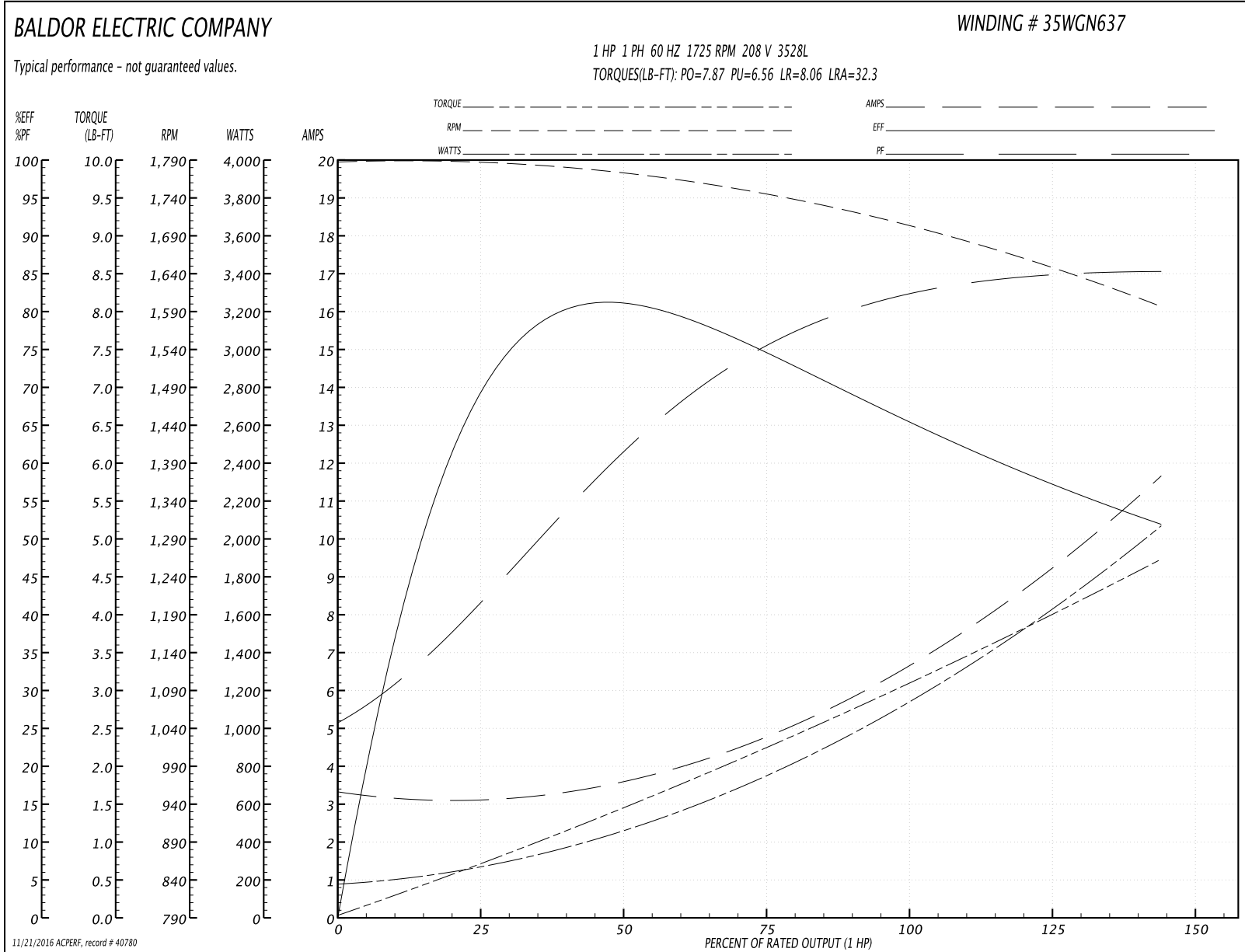
Winding: 35WGN637-R001	Type: 3528L	Enclosure: TEFC
-------------------------------	--------------------	------------------------

Nameplate Data				208 V, 60 Hz: High Voltage Connection	
Rated Output (HP)	1			Full Load Torque	3.03 LB-FT
Volts	115/208-230			Start Configuration	direct on line
Full Load Amps	11.8/6.3-5.9			Breakdown Torque	7.87 LB-FT
R.P.M.	1725			Pull-up Torque	6.56 LB-FT
Hz	60	Phase	1	Locked-rotor Torque	8.06 LB-FT
NEMA Design Code	L	KVA Code	K	Starting Current	32.3 A
Service Factor (S.F.)	1			No-load Current	3.01 A
NEMA Nom. Eff.	72	Power Factor	77	Line-line Res. @ 25°C	2.4797 Ω A Ph 1.1184 Ω B Ph
Rating - Duty	40C AMB-CONT			Temp. Rise @ Rated Load	73°C

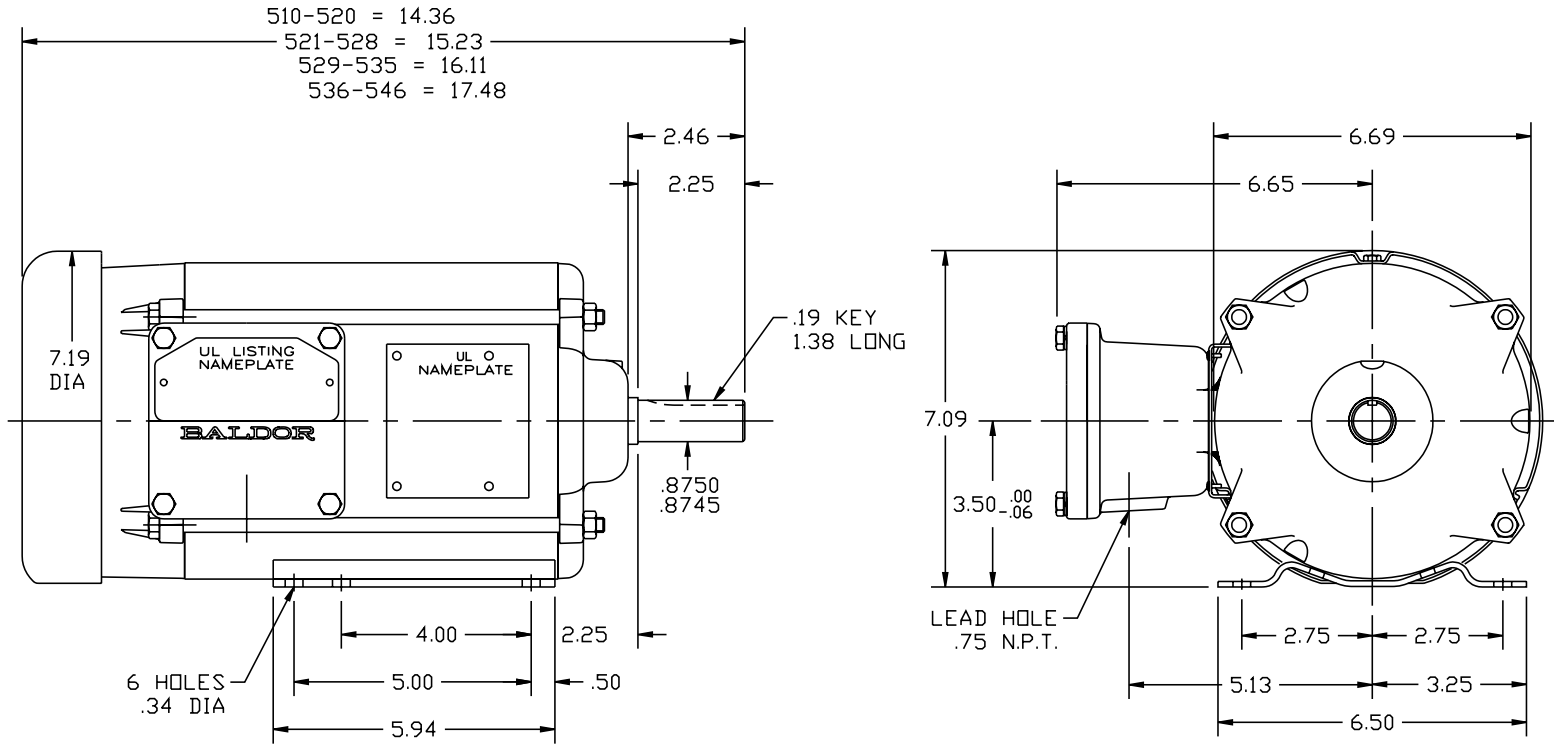
Load Characteristics 208 V, 60 Hz, 1 HP

% of Rated Load	25	50	75	100	125	150
Power Factor	45	64	75	82	85	86
Efficiency	58.2	69.5	71.6	69.4	63.9	48.7
Speed	1779.2	1762.5	1741.7	1714.9	1674.4	1576
Line amperes	3.3	3.94	4.94	6.28	8.24	12.4

Performance Graph at 208V, 60Hz, 1.0HP Typical performance - Not guaranteed values



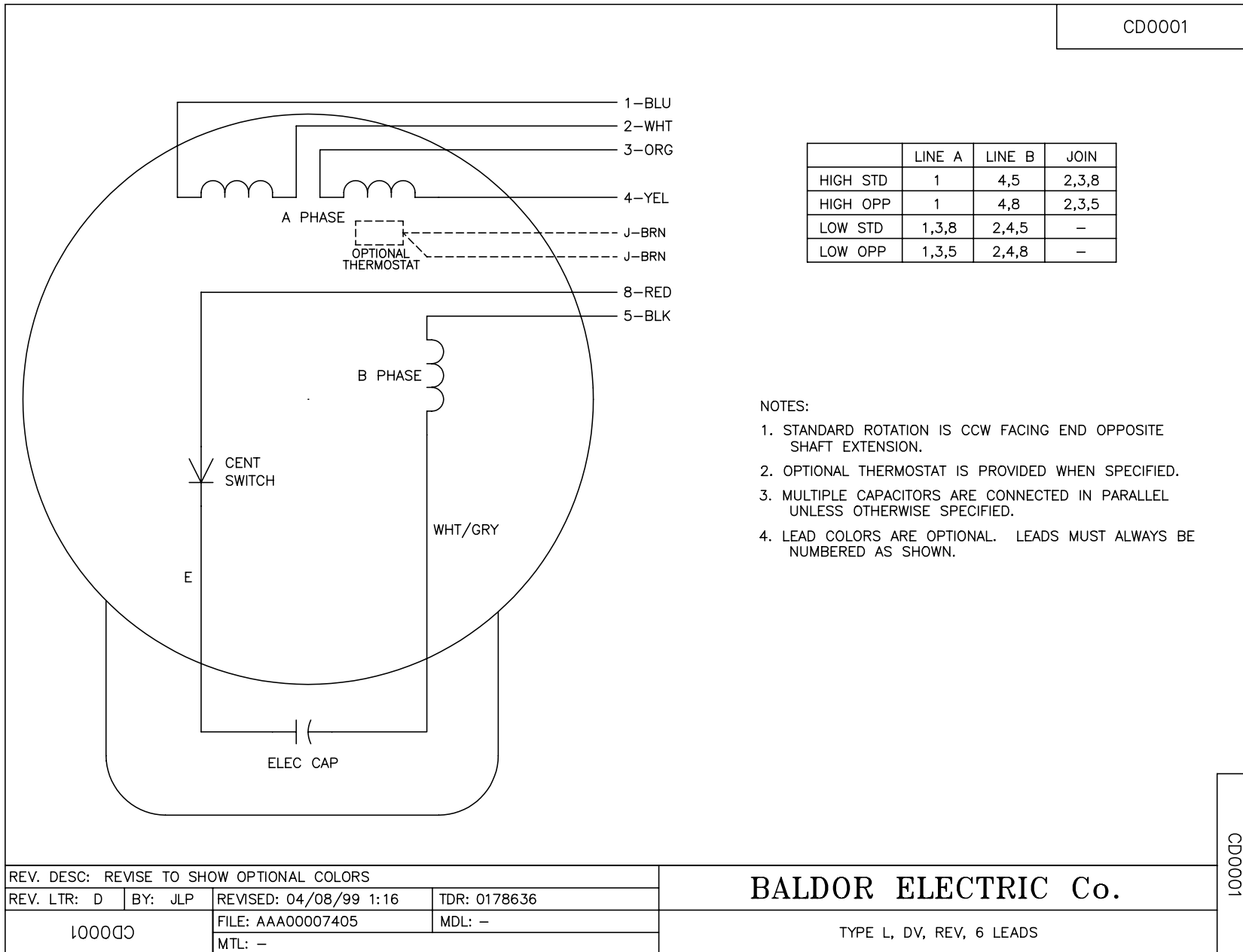
35J659



CUST. NAME		CUST. P.O.		CERTIFIED BY		MODEL		INSUL		AMB	
H.P.		MTG		TYPE		R.P.M.		VOLTS		ENCL	
PHASE		FREQ		FRAME		REMARKS:					
REV:	B	LOADED TO ACAD									
69999E		SCALE: .3	BY: JKH	REVISED: 10/05/94	BALDOR ELECTRIC Co. STD HDRZ X35L NEMA 143-5T TEFC UL CLASS I-GP D T'STATS						
		FILE: AAA00014073	TDR: 0051035								

35J659

CD0001



CD0001

REV. DESC: REVISE TO SHOW OPTIONAL COLORS			
REV. LTR: D	BY: JLP	REVISED: 04/08/99 1:16	TDR: 0178636
100000		FILE: AAA00007405	MDL: -
		MTL: -	

BALDOR ELECTRIC Co.

TYPE L, DV, REV, 6 LEADS