

BALDOR® • *RELIANCE*

Product Information Packet

PSC3416A

.33HP, 1625RPM, 1PH, 60HZ, 48Z, 3414C, TEAO, F1

Part Detail							
Revision:	J	Status:	PRD/A	Change #:		Proprietary:	No
Type:	AC	Prod. Type:	3414C	Elec. Spec:	34WGW426	CD Diagram:	CD0028
Enclosure:	TEAO	Mfg Plant:		Mech. Spec:	34G144	Layout:	34LYG144
Frame:	48Z	Mounting:	F1	Poles:	04	Created Date:	
Base:	RG	Rotation:	R	Insulation:	B	Eff. Date:	04-01-2011
Leads:	7#18					Replaced By:	
Literature:		Elec. Diagram:					

Nameplate NP1257L	
CAT.NO.	PSC3416A
SPEC.	34G144W426
HP	.33 AIR OVER
VOLTS	115/230
AMP	3.6/1.8
RPM	1625
FRAME	48Z HZ 60 PH 1
SER.F.	1.00 CODE - DES N CL B
NEMA-NOM-EFF	62 PF 95
RATING	40C AMB-CONT
CC	USABLE AT 208V
DE	6203 ODE 6203
ENCL	TEAO SN

Parts List		
Part Number	Description	Quantity
SA006247	SA 34G144W426	1.000 EA
RA002993	RA 34G144W426	1.000 EA
RM1001A01	GROMMET "MIDSTATES"	1.000 EA
WD4100A01	DP-875 HEYCO PLUG OR 62MP0875 MICRO PLAS	1.000 EA
11XT0832G06	8-32 X 3/8 TY 23 TAPPING	1.000 EA
34EP3204A01SP	FR ENDPLATE, MACH	1.000 EA
SP1000A01	TERM BOARD, MODEL 34 SW	1.000 EA
51XW0832A07	8-32 X .44, TAPTITE II, HEX WSHR SLTD SE	3.000 EA
NS2501A01	INSULATOR, CAPACITOR	1.000 EA
51XB1016A05	10-16X5/16HX WA SL SR TYB (F/S)	2.000 EA
HW5100A03SP	WAVY WASHER (W1543-017)	1.000 EA
34EP3102A02SP	FR/PU ENDPLATE, MACH	1.000 EA
XY1032A02	10-32 HEX NUT DIRECTIONAL SERRATION	4.000 EA
34CB4501SP	TERMINAL BOX LID, STAMPED X (PLATED)	1.000 EA
34GS1005	GASKET, TERM PLATE LID	1.000 EA
51XW0832A07	8-32 X .44, TAPTITE II, HEX WSHR SLTD SE	2.000 EA
MG1000G27	MED CHARCOAL METALLIC GREY 400-0096	0.014 GA
10XF0440S02	04-40 X 1/8 TYPE F HEX HD STAINLESS STIC	2.000 EA
OC3020F12	CYL OIL CAP 20MFD/370V	1.000 EA
33CB4800A01	CAPACITOR COVER, STAMPED	1.000 EA
35GS3001A01	GASKET, CAPACITOR COVER	1.000 EA
HA3100A17	THRUBOLT 10-32 X 9.000	4.000 EA
LB1118	LABEL,WARNING (ROLL LABEL)	1.000 EA
LC0008	CONNECTION LABEL	1.000 EA

Parts List (continued)		
Part Number	Description	Quantity
NP1257L	ALUM UL CSA CC THERMAL REV MTG	1.000 EA
34PA1002	PKG GRP, PRINT PK1001A01	1.000 EA

AC Induction Motor Performance Data
Record # 6977 - Typical performance - not guaranteed values

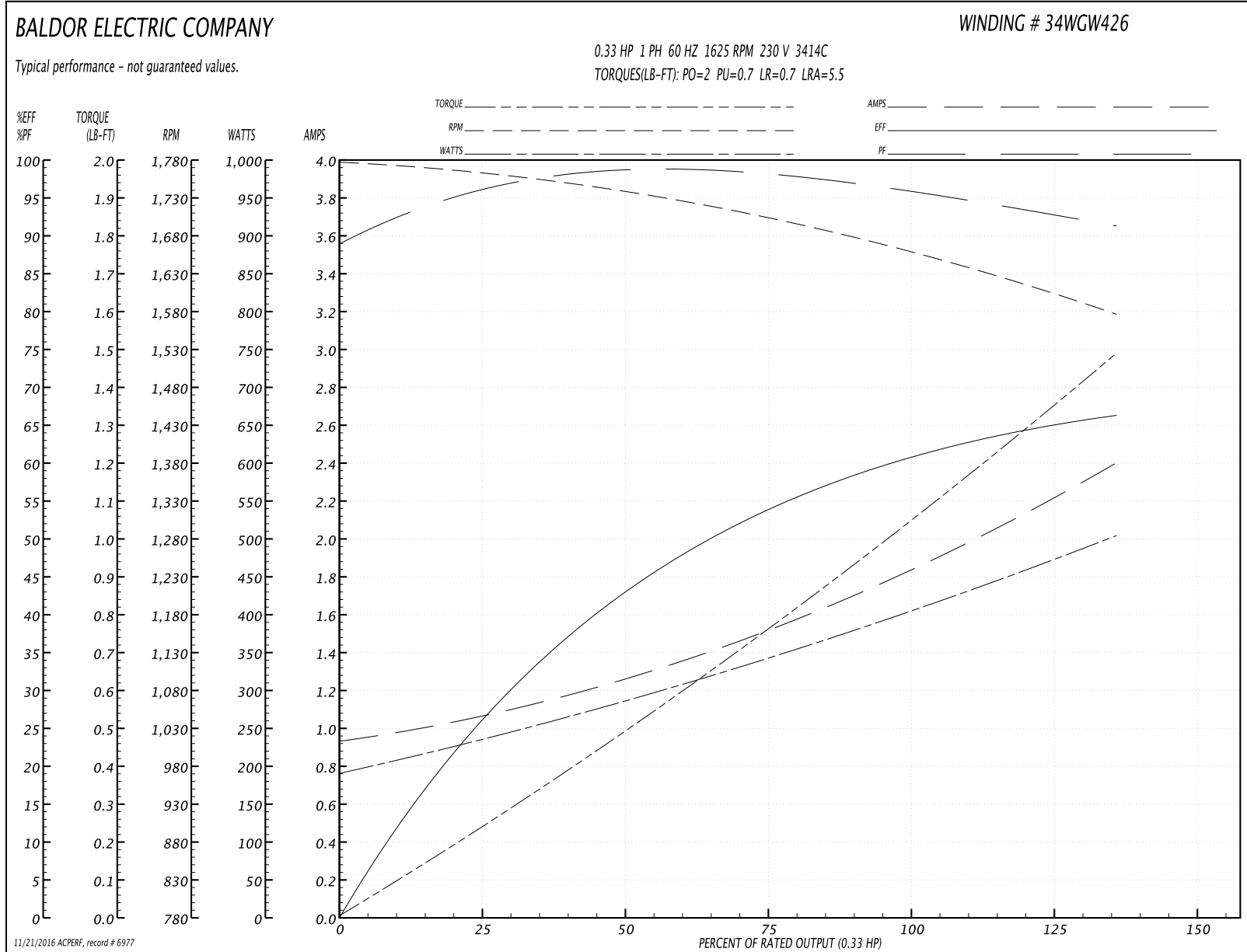
Winding: 34WGW426-R001	Type: 3414C	Enclosure: TEAO
-------------------------------	--------------------	------------------------

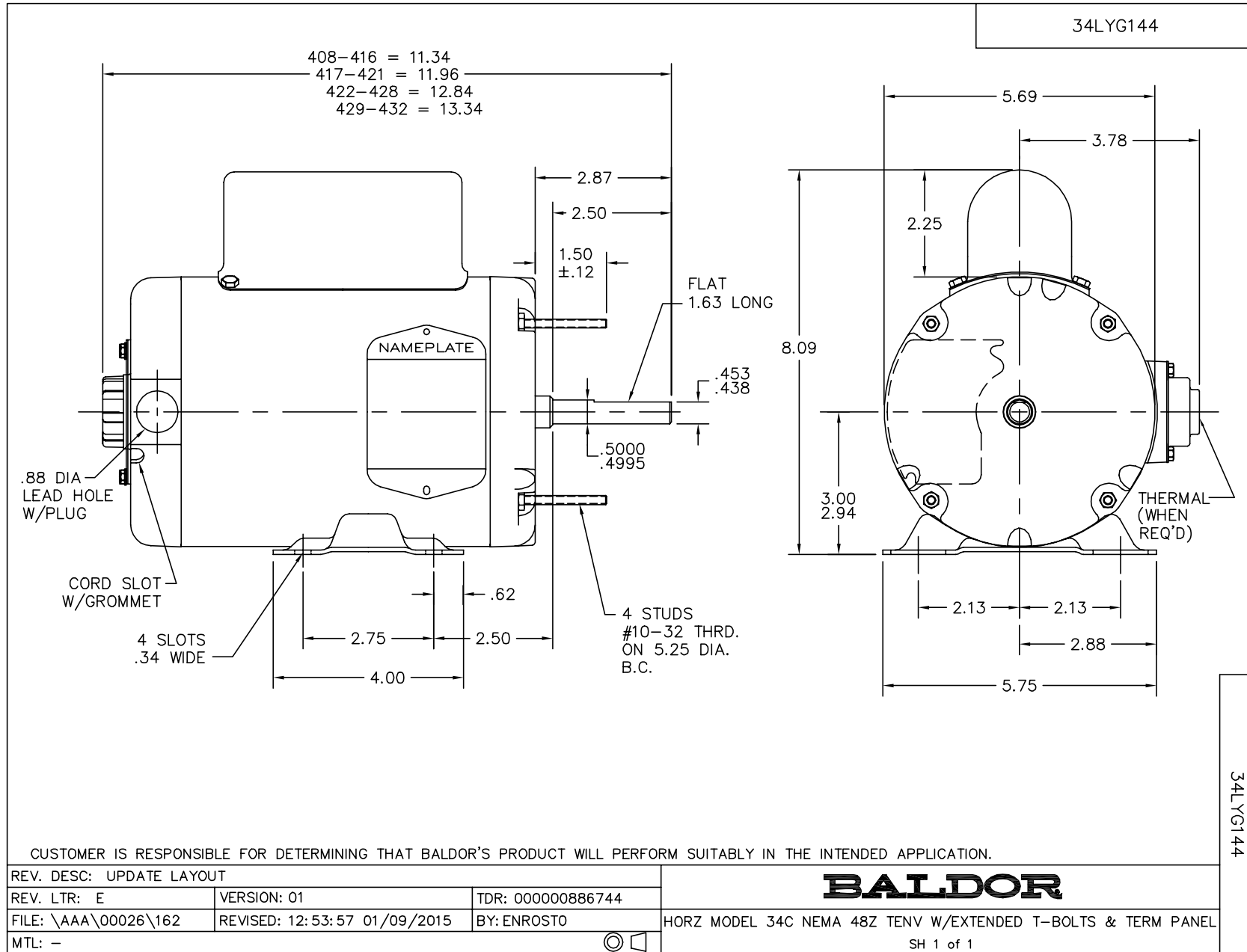
Nameplate Data				230 V, 60 Hz: High Voltage Connection	
Rated Output (HP)	.33 AIR OVER			Full Load Torque	1 LB-FT
Volts	115/230			Start Configuration	direct on line
Full Load Amps	3.6/1.8			Breakdown Torque	2 LB-FT
R.P.M.	1625			Pull-up Torque	0.7 LB-FT
Hz	60	Phase	1	Locked-rotor Torque	0.7 LB-FT
NEMA Design Code	N	KVA Code	-	Starting Current	5.5 A
Service Factor (S.F.)	1			No-load Current	0.9 A
NEMA Nom. Eff.	62	Power Factor	95	Line-line Res. @ 25°C	10.7 Ω A Ph 10.7 Ω B Ph
Rating - Duty	40C AMB-CONT			Temp. Rise @ Rated Load	

Load Characteristics 230 V, 60 Hz, 0.33 HP

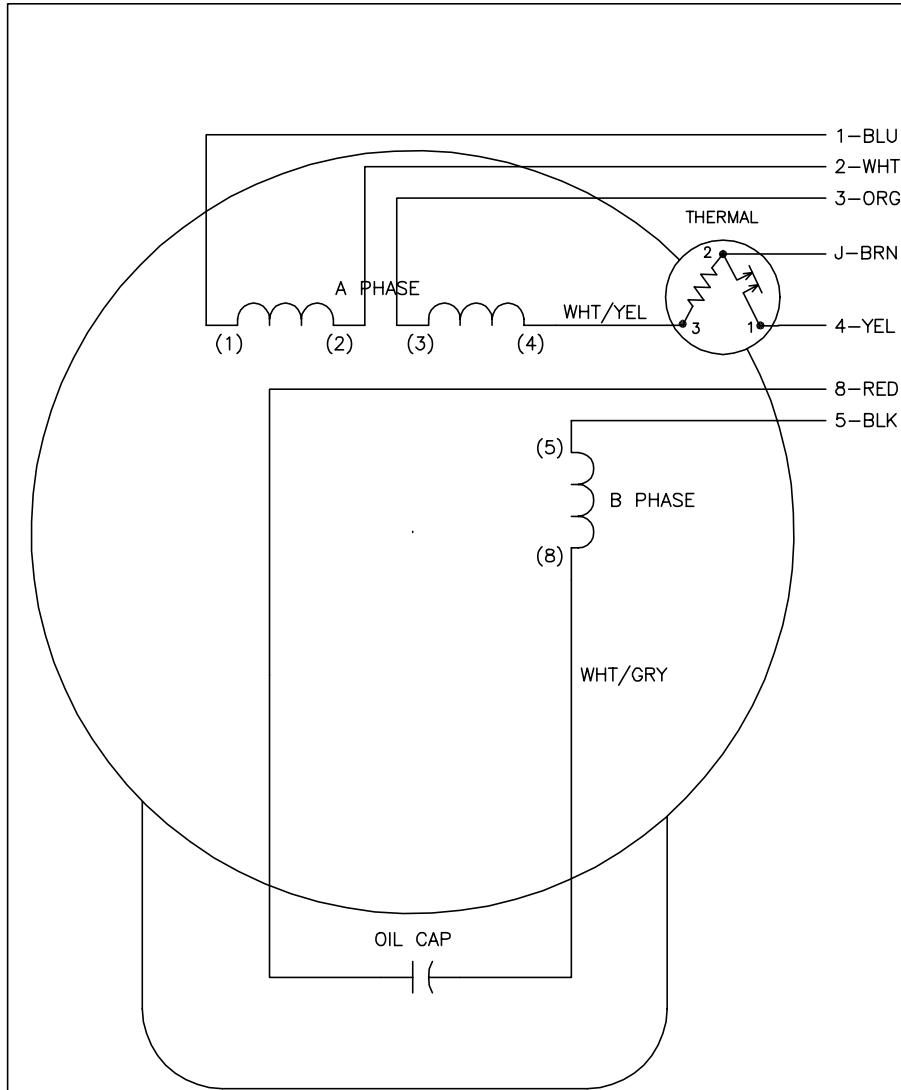
% of Rated Load	25	50	75	100	125	150
Power Factor	94	97	99	99	99	99
Efficiency	25.8	42.5	53.6	60.7	64.7	65.6
Speed	1759	1734	1705	1671	1628	1570
Line amperes	1.1	1.3	1.5	1.75	2.05	2.45

Performance Graph at 230V, 60Hz, 0.33HP Typical performance - Not guaranteed values





CD0028



	LINE A	LINE B	JOIN	JOIN
HIGH STD	1	4	2,3,8	J,5
HIGH OPP	1	4	2,3,5	J,8
LOW STD	1,3,8	4	-	2,J,5
LOW OPP	1,3,5	4	-	2,J,8

NOTES:

1. STANDARD ROTATION IS CCW FACING END OPPOSITE SHAFT EXTENSION.
2. MULTIPLE CAPACITORS ARE CONNECTED IN PARALLEL UNLESS OTHERWISE SPECIFIED.
3. LEAD COLORS ARE OPTIONAL. LEADS MUST ALWAYS BE NUMBERED AS SHOWN.

REV. DESC: REMOVE OPTIONAL THERMAL CONNECTION			
REV. LTR: E	VERSION: 01	TDR: 000000373051	
CD0028	FILE: \AAA\00007\413	REVISED: 15:17:57 09/07/2005	
	MTL: -	BY: ENJOEPO	

BALDOR ELECTRIC Co.

TYPE C, DV, REV, THERMAL, 7 LEADS

CD0028