

BALDOR® • RELIANCE

Product Information Packet

SUM21504

15HP,1800RPM,3PH,60HZ,210TY,TENV,FOOTLE

Part Detail							
Revision:	-	Status:	PRD/A	Change #:		Proprietary:	No
Type:	AC	Prod. Type:		Elec. Spec:	E02744-A-A007	CD Diagram:	416820-2
Enclosure:	TENV	Mfg Plant:		Mech. Spec:		Layout:	066930-502
Frame:	210TY	Mounting:	V1	Poles:	04	Created Date:	04-09-2015
Base:		Rotation:	R	Insulation:	F	Eff. Date:	04-13-2015
Leads:						Replaced By:	
Literature:		Elec. Diagram:					

Nameplate 000613007MN									
CAT NO	SUM21504	SPEC NO.	P21G2752						
HP	15	AMPS	40.2/20.1		VOLTS	230/ 460		DESIGN	B
FRAME SIZE	210TY	RPM	1745		HZ	60	AMB	SF	1.15
D.E. BRG.	60BC02JPP30A		PH	3	DUTY	*		INSUL	F
O.D.E. BRG.	30BC02JPG30A		TYPE	P	ENCL	TENV		CODE	G
			POWER FACTOR			NEMA-NOM-EFF			
			MAX CORR KVAR			GUARANTEED EFFICIENCY			
					NEMA NOM/CSA QUOTED EFF @	100% LOAD			
SER.NO.			MOTOR WEIGHT	380		LBS.			
	SUB. IN WATER ONLY; MAX DEPTH-								
	REFER TO INSTR MANUAL *15								
	MIN IN AIR FINAL CONN AT 230V;								

Nameplate 000613007MR									
CAT NO	SUM21504	SPEC NO.	P21G2752						
HP	15	AMPS	40.2/20.1		VOLTS	230/ 460		DESIGN	B
FRAME SIZE	210TY	RPM	1745		HZ	60	AMB	SF	1.15
D.E. BRG.	60BC02JPP30A		PH	3	DUTY	*		INSUL	F
O.D.E. BRG.	30BC02JPG30A		TYPE	P	ENCL	TENV		CODE	G
			POWER FACTOR			NEMA-NOM-EFF			
			MAX CORR KVAR			GUARANTEED EFFICIENCY			
					NEMA NOM/CSA QUOTED EFF @			100% LOAD	
SER.NO.					MOTOR WEIGHT	380	LBS.		
	SUB. IN WATER ONLY; MAX DEPTH-								
	REFER TO INSTR MANUAL *15								
	MIN IN AIR FINAL CONN AT 230V;								

Parts List		
Part Number	Description	Quantity
SA297398	SA P21G2752	1.000 EA
RA284367	RA P21G2752	1.000 EA
000613007MN	NP,MEDIUM AC,NO CERT,STD INDUSTRIAL	1.000 EA
000613007MR	NP, MEDIUM AC, CSA, STD INDUSTRIAL	1.000 EA
000692000EJ	NAME PLATE	1.000 EA
000901001AA	LABEL WARNING	1.000 EA
001575000B	WIRING DIAGRAM	1.000 EA
424476001A	NAME PLATE-RGG	1.000 EA
424476003WA	WIRING DIAGRAM MEDIUMA	1.000 EA
034692002AE	HCSPP 1/4" 304 S.S.	1.000 EA
004824015A	GREASE POLYREX EM	0.100 LB
032018012DG	HHCS 1/2-13X1-1/2 316S.S	4.000 EA
032130010DC	HSACS 1/2-13X1-1/4 304SS	4.000 EA
034692003AE	PPLG 3/8" 304 S.S.	2.000 EA
047174005C	SNAP RING	1.000 EA
047174005D	SNAP RING	1.000 EA
064262012C	SEAL	1.000 EA
064262012D	SEAL	1.000 EA
088207001AA	BRKT,DE,210SUB 88207-1WA	1.000 EA
088208001AA	MTG PLATE EX210Y SUBMERSIBLE 088208001WB	1.000 EA
413412004A	SUBM MOISTURE PROBE	2.000 EA
413412005S	LEAD WIRE ASSY(BLANKET	1.000 EA
413480001R	RESISTOR ASSEMBLY-BLANKET	1.000 EA
421900144FU	ORING	1.000 EA

Parts List (continued)		
Part Number	Description	Quantity
421900144FU	ORING	1.000 EA
032018006BM	HHCS 5/16-18X3/4 PLTGRN.	1.000 EA
032018010CG	HHCS 3/8-16X1-1/4L 316SS	4.000 EA
421900092FU	ORING	1.000 EA
700385014M	CCA #8 25' 210/250	1.000 EA
004824007K	SPECIAL PAINT	0.100 EA
033775004EA	DRSCR #6-1/4 304 S.S.	4.000 EA
034180009FD	KEY 3/8X3/8X1-1/8 303 SS	1.000 EA
088206001AB	BRKT,ODE,210SUB 88206-1WB	1.000 EA
421900144FU	ORING	1.000 EA
004824018AF	SHELL ROTELLA OIL 10W	2.500 LB
032018008BG	HHCS 5/16-18X1 BRASS-447	3.000 EA
032018012DG	HHCS 1/2-13X1-1/2 316S.S	4.000 EA
000901001AA	LABEL WARNING	1.000 EA

REL. S.O.	FRAME	HP	TYPE	PHASE/HERTZ	RPM	VOLTS
S1200208244	210TY	15	P	3/60	1745	230/460
AMPS	DUTY	AMB ^o C/ INSUL.	S.F.	NEMA DESIGN	CODE LETTER	ENCL.
40.2/20.1	CONT	40/F	1.15	B	G	TENV
E/S	ROTOR	TEST S.O.	TEST DATE	STATOR RES. @25 ^o C (OHMS BETWEEN LINES)		
534872	418425040EE	---	---	.237/.948		

PERFORMANCE


LOAD	HP	AMPERES	RPM	INPUT KW	POWER FACTOR	% EFFICIENCY
NO LOAD	0	8.0	1800	.878	13.8	0
1/4	3.75	9.5	1787	3.74	49.6	74.8
2/4	7.50	12.2	1775	6.72	69.2	83.3
3/4	11.3	15.8	1762	9.83	77.9	85.4
4/4	15.0	20.1	1747	13.1	82.0	85.4
5/4	18.7	24.8	1730	16.6	83.9	84.4

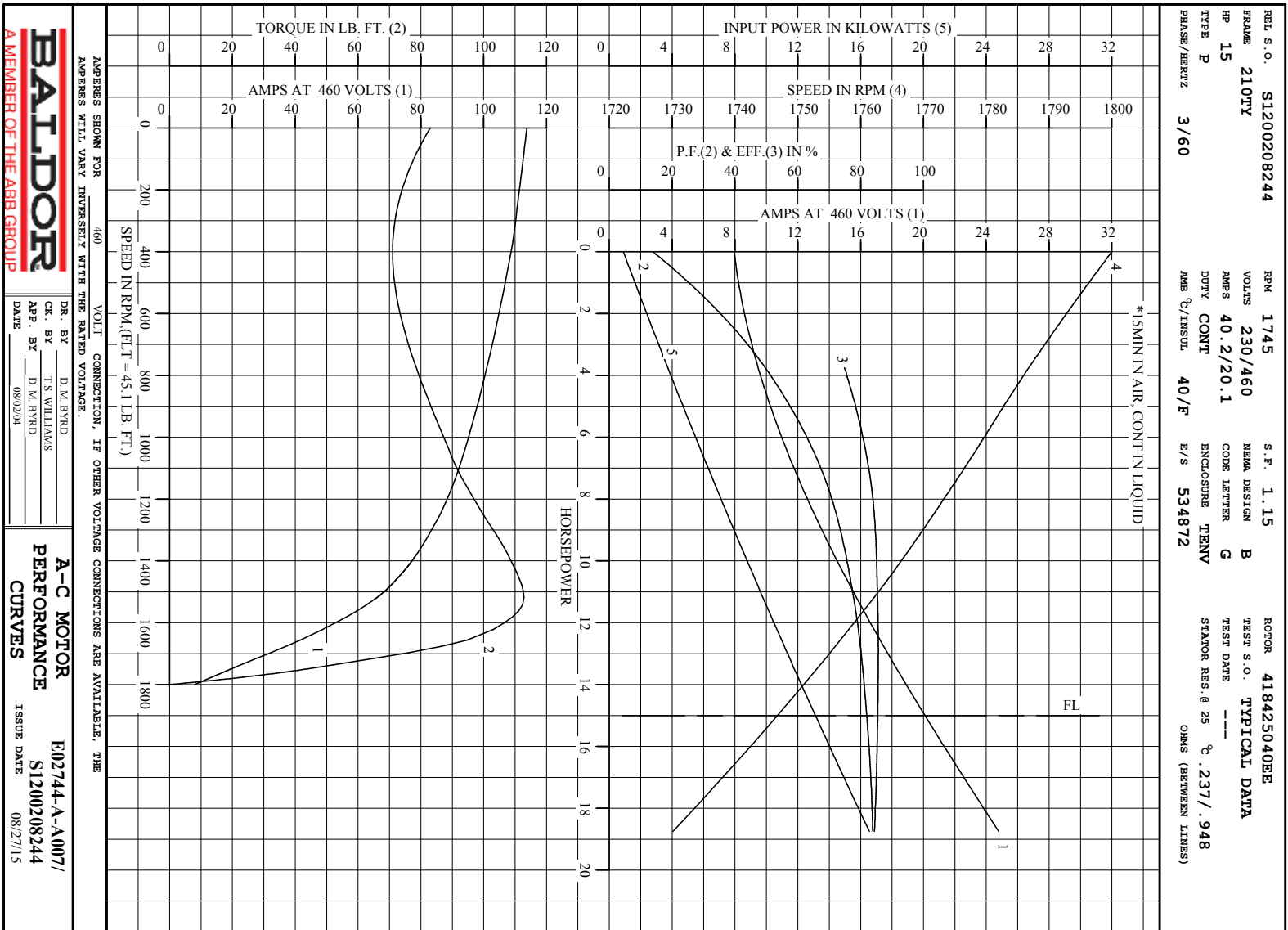
SPEED TORQUE

	RPM	TORQUE % FULL LOAD	TORQUE LB.-FT.	AMPERES
LOCKED ROTOR	0	184	83.0	114
PULL UP	400	157	71.0	109
BREAKDOWN	1522	250	113	65.6
FULL LOAD	1747	100	45.1	20.1

AMPERES SHOWN FOR 460. VOLT CONNECTION. IF OTHER VOLTAGE CONNECTIONS ARE AVAILABLE, THE AMPERES WILL VARY INVERSELY WITH THE RATED VOLTAGE

REMARKS: TYPICAL DATA
*15MIN IN AIR, CONT IN LIQUID

 A MEMBER OF THE ABB GROUP	DR. BY	D. M. BYRD	A-C MOTOR PERFORMANCE DATA E02744-A-A007/ S1200208244 ISSUE DATE 08/27/15
	CK. BY	T. S. WILLIAMS	
	APP. BY	D. M. BYRD	
	DATE	08/02/04	



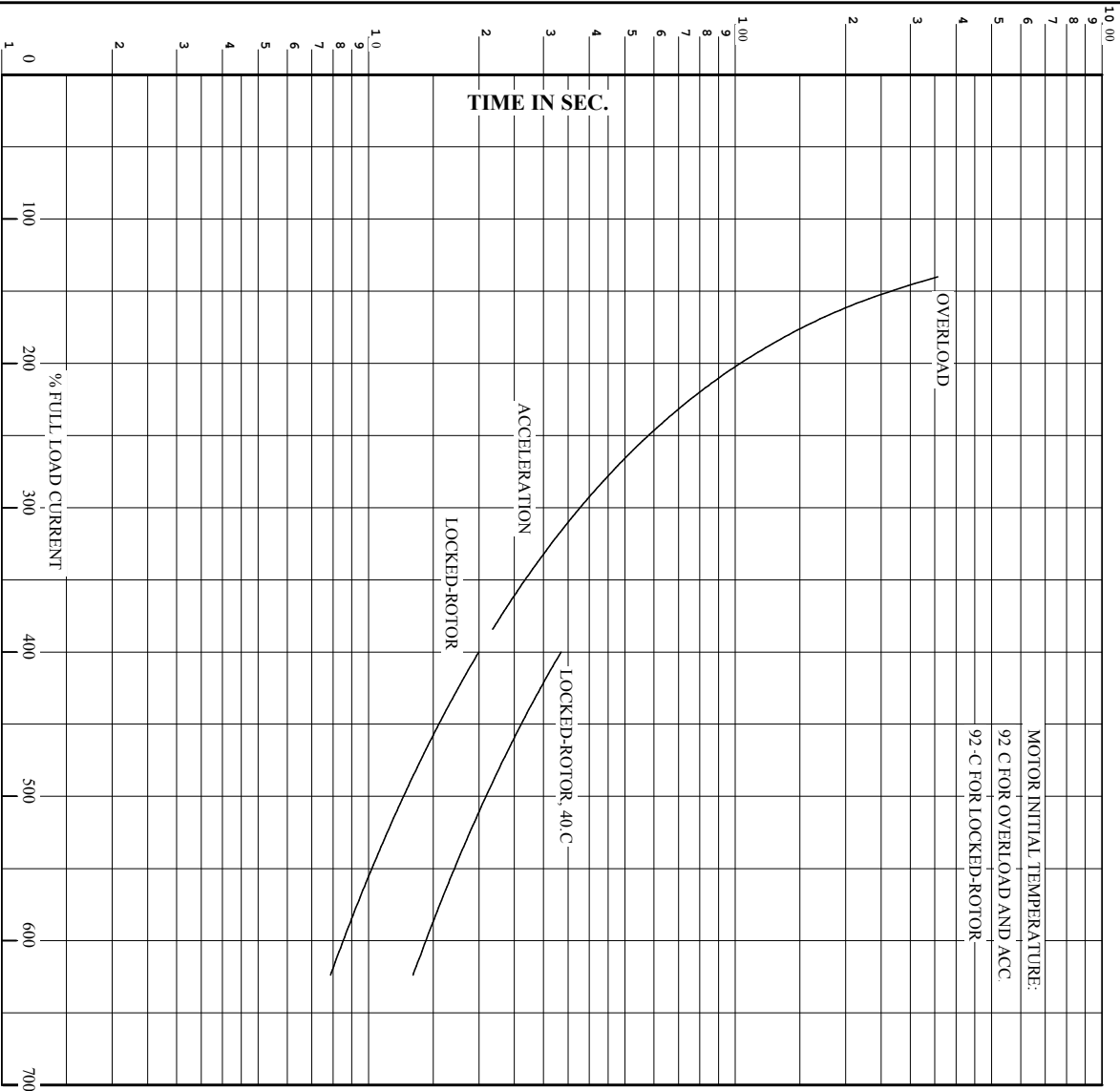
AMPERES SHOWN FOR 460 VOLT CONNECTION, IF OTHER VOLTAGE CONNECTIONS ARE AVAILABLE, THE AMPERES WILL VARY INVERSELY WITH THE RATED VOLTAGE.

BALDOR
A MEMBER OF THE ABB GROUP

DR. BY D.M. BYRD	A-C MOTOR	E02744-A-A007/
CHK. BY T.S. WILLIAMS	PERFORMANCE	S1200208244
APP. BY D.M. BYRD	CURVES	ISSUE DATE 08/27/15
DATE 08/20/14		

Printed on 8/27/15 14:56 @ bengap01.baldor.com

REL. S.O. S1200208244 RPM 1745 S.F. 1.15 ROTOR 418425040EE
 FRAME 210TY VOLTS 230/460 NEMA DESIGN B TEST S.O. TYPICAL DATA
 HP 15 AMPS 40.2/20.1 CODE LETTER G TEST DATE ---
 TYPE P DUTY CONT 40/F ENCLOSURE TENV SPATOR RES. @ 25 °. 237/. 948
 PHASE/HERTZ 3/60 AMB °C/INSUL E/S 534872 OHMS (BETWEEN LINES)



REMARKS: THERMAL LIMIT CURVE
 *15MIN IN AIR, CONT IN LIQUID

AMPERES SHOWN FOR 460 VOLT CONNECTION, IF OTHER VOLTAGE CONNECTIONS ARE AVAILABLE, THE AMPERES WILL VARY INVERSELY WITH THE RATED VOLTAGE.



DR. BY D.M.BYRD
 CK. BY T.S.WILLIAMS
 APP. BY D.M.BYRD
 DATE 08/20/14

A-C MOTOR PERFORMANCE CURVES

E02744-A-A007/
 S1200208244
 ISSUE DATE 08/27/15

