

BALDOR® • ***RELIANCE***

Product Information Packet

VSSEWDM3713T

15HP,3500RPM,3PH,60HZ,215TC,3756M,TEFC,F

Part Detail							
Revision:	E	Status:	PRD/A	Change #:		Proprietary:	No
Type:	AC	Prod. Type:	3756M	Elec. Spec:	37WGR515	CD Diagram:	CD0180
Enclosure:	TEFC	Mfg Plant:		Mech. Spec:	37N188	Layout:	37LYN188
Frame:	215TC	Mounting:	F1	Poles:	02	Created Date:	02-13-2015
Base:	N	Rotation:	R	Insulation:	H	Eff. Date:	02-29-2016
Leads:	9#14					Replaced By:	
Literature:		Elec. Diagram:					

Nameplate NP1953C02										
CAT.NO.	VSSEWDM3713T									
SPEC.	37N188R515G1									
HP	15									
VOLTS	230/460									
AMP	34/17									
RPM	3500									
FRAME	215TC				HZ	60			PH	3
SER.F.	1.15		CODE	L	DES	A		CLASS	H	
NEMA-NOM-EFF	91.7		PF	90						
RATING	40C AMB-CONT									
CC	010A				USABLE AT 208V					37
DE	6307			ODE	6307					
ENCL	TEFC		SN							

Parts List		
Part Number	Description	Quantity
SA294008	SA 37N188R515G1	1.000 EA
RA280094	RA 37N188R515G1	1.000 EA
36FN3000A02SP	EXFN, PLASTIC, 7.00 OD, 1.175 ID	1.000 EA
HW3200S01	EYEBOLT 3/8-16 X3/4 S.S. TDR #35988	1.000 EA
11XW1032G06	10-32 X .38, TAPTITE II, HEX WSHR SLTD U	1.000 EA
37FE1910A06	FREP TEFC 307 BRG NO GRSR W/SEAL 4X.125N	1.000 EA
RM1070A48	O-RING, .070 C.S. X 8.656 ID, VITON	1.000 EA
HW4600F34	35MM X 53MM X 4.5MM, VITON FACE SEAL	1.000 EA
HW4600F34	35MM X 53MM X 4.5MM, VITON FACE SEAL	1.000 EA
HW4500A33	1/8 NPT STAINLESS,HOLO-KROME #13002,PRES	3.000 EA
HW5100A08	W3118-035 WVY WSHR (WB)	1.000 EA
37PE1911A11	PUEP, MACH - 307 BRG WD8 (STAINLESS)	1.000 EA
RM1070A48	O-RING, .070 C.S. X 8.656 ID, VITON	1.000 EA
HW4500A33	1/8 NPT STAINLESS,HOLO-KROME #13002,PRES	3.000 EA
RM1070A47	O-RING, -011 VITON, .070 C.S. X .312 ID	4.000 EA
51XB1214A20	12-14X1.25 HXWSSLD SERTYB	1.000 EA
37FH4000A45	STAINLESS FAN COVER, NO GREASER SLOT (FO	1.000 EA
10XN1032S06	HEX HD CAP SCREW, SS	3.000 EA
36CB4517	LIPPED CB LID #304 STAINLESS - CLEANED	1.000 EA
37GS3010	1/16"WHITE LID GASKET	1.000 EA
59XN0832S07	8/32 X 7/16 HX WS HD SER X	4.000 EA
HW2502F21	#303 SS,SQ KEY 5/16 X 2.375	1.000 EA
HA7000A02	KEY RETAINER RING, 1 1/8 DIA, 1 3/8 DIA	1.000 EA
MJ5001A27	32220KN GRAY SEALER *MIN BUY 4 QTS=1GAL	0.005 QT

Parts List (continued)		
Part Number	Description	Quantity
MJ5004A37	#76732 LOCTITE ANTISEIZE THRD COMPOUND	0.005 EA
HA5027A02	HA4054 T-DRAIN X2 BAGGED WITH LABEL	1.000 EA
MJ1000A02	GREASE, POLYREX EM EXXON (USe 4824-15A)	0.050 LB
WD5603A01	KIT, CLOSED-END LEAD SPLICE (18-14GA)	1.000 EA
HA3104S25	THRUBOLT-5/16-18X14.75 SS	4.000 EA
37PA1039	PALLET PACK GRP, PRINT PK1026A06	1.000 EA
MN416A01	TAG-INSTAL-MAINT no wire (1200/bx) 11/14	1.000 EA
HA5027A07	85XU1208S08 FACE DRAIN PINS BAGGED	1.000 EA

AC Induction Motor Performance Data

Record # 43026 - Typical performance - not guaranteed values

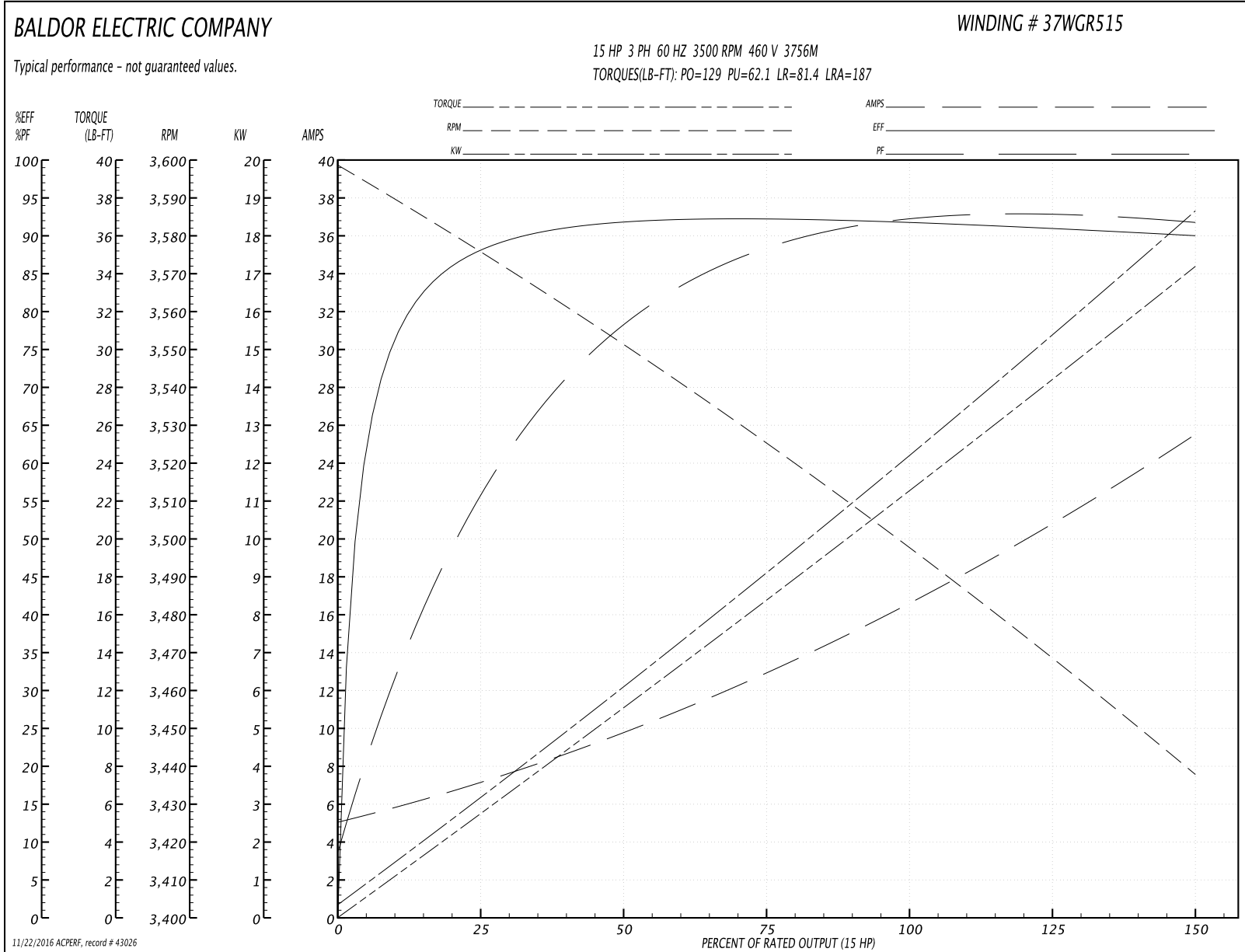
Winding: 37WGR515-R001	Type: 3756M	Enclosure: TEFC
-------------------------------	--------------------	------------------------

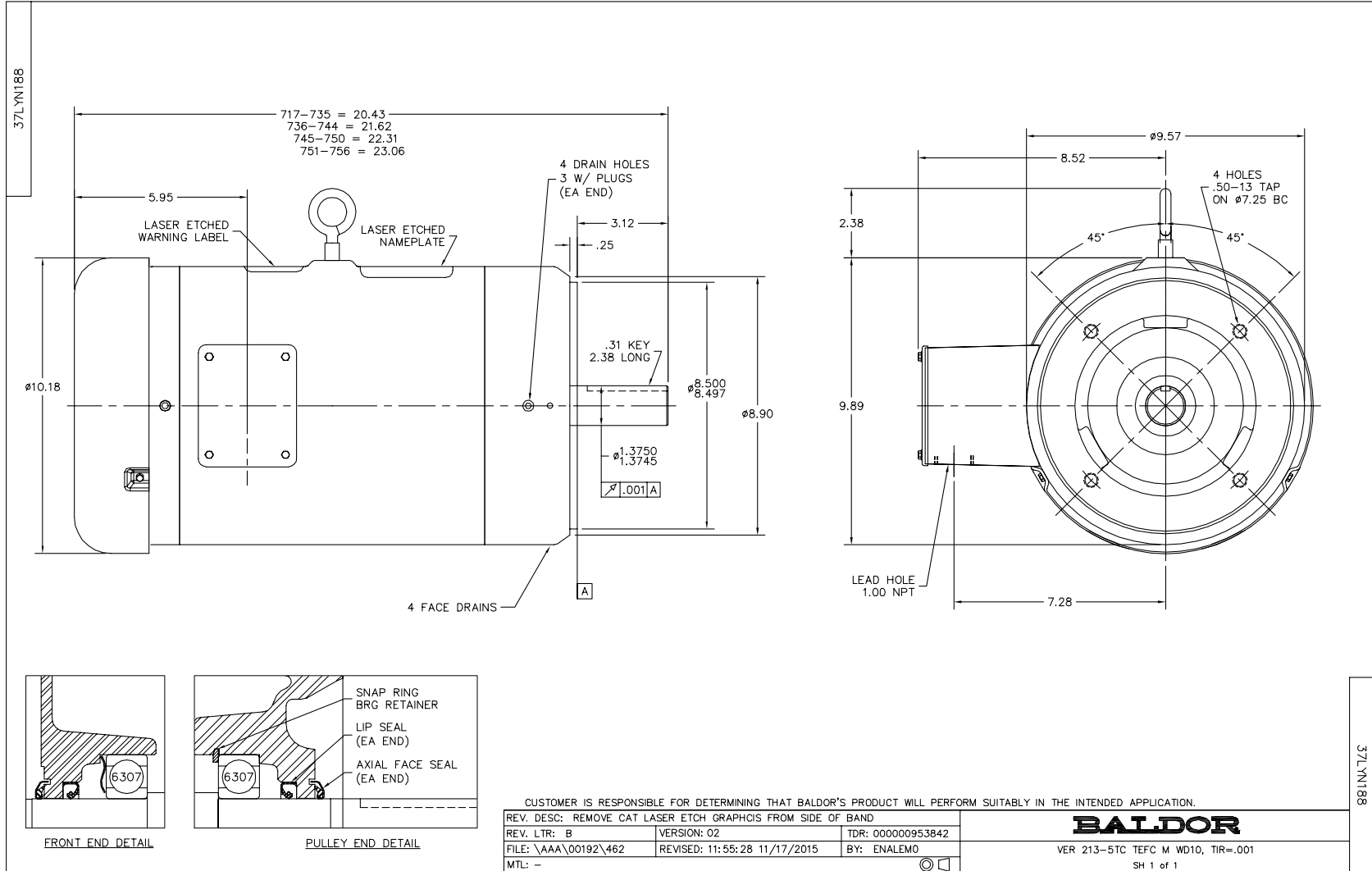
Nameplate Data				460 V, 60 Hz: High Voltage Connection	
Rated Output (HP)	15			Full Load Torque	22.4 LB-FT
Volts	230/460			Start Configuration	direct on line
Full Load Amps	34/17			Breakdown Torque	129 LB-FT
R.P.M.	3500			Pull-up Torque	62.1 LB-FT
Hz	60	Phase	3	Locked-rotor Torque	81.4 LB-FT
NEMA Design Code	A	KVA Code	L	Starting Current	187 A
Service Factor (S.F.)	1.15			No-load Current	5.43 A
NEMA Nom. Eff.	91.7	Power Factor	90	Line-line Res. @ 25°C	0.42167 Ω
Rating - Duty	40C AMB-CONT			Temp. Rise @ Rated Load	78°C
S.F. Amps				Temp. Rise @ S.F. Load	96°C
				Locked-rotor Power Factor	30
				Rotor inertia	0.512 LB-FT ²

Load Characteristics 460 V, 60 Hz, 15 HP

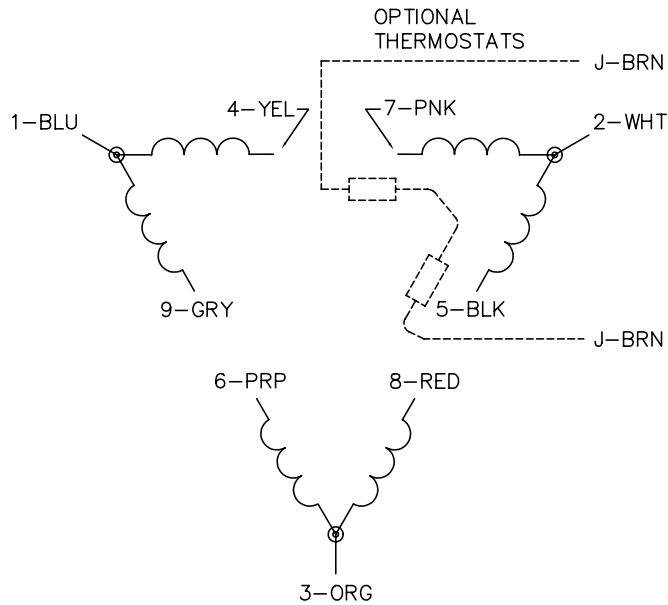
% of Rated Load	25	50	75	100	125	150	S.F.
Power Factor	59	82	87	90	92	93	91
Efficiency	88.1	92	92.4	91.9	91.1	89.9	91.4
Speed	3575.6	3551.4	3525.1	3498.7	3469.7	3437.4	3481
Line amperes	6.71	9.36	13.1	16.9	20.8	25.3	19.2

Performance Graph at 460V, 60Hz, 15.0HP Typical performance - Not guaranteed values

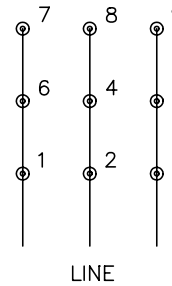




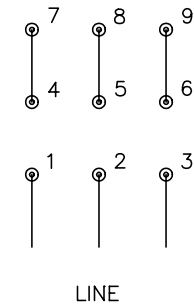
CD0180



LOW VOLTAGE
(2D)



HIGH VOLTAGE
(1D)



NOTES:

1. INTERCHANGE ANY TWO LINE LEADS TO REVERSE ROTATION.
2. OPTIONAL THERMOSTATS ARE PROVIDED WHEN SPECIFIED.
3. ACTUAL NUMBER OF INTERNAL PARALLEL CIRCUITS MAY BE A MULTIPLE OF THOSE SHOWN ABOVE.
4. LEAD COLORS ARE OPTIONAL. LEADS MUST ALWAYS BE NUMBERED AS SHOWN.

REV. DESC: REVISE TO SHOW OPTIONAL COLORS			
REV. LTR: C	BY: JLP	REVISED: 01/21/99 2:28	TDR: 0171435
0810D0		FILE: AAA00005148	MDL: -
		MTL: -	

BALDOR ELECTRIC Co.

3PH, DV, 9 LEADS, DELTA CONNECTION

CD0180