

END-SUCTION CENTRIFUGAL PUMPS

Series: BCSF
3 - 20 HP @ 3500 RPM
0.5 - 5 HP @ 1750 RPM
1 & 3 phases



SUCTION

2" or 3" horizontal

DISCHARGE

1½" or 2" vertical

MAX. WORKING PRESSURE

175 PSIG

MAX. TEMPERATURES

250 °F (121 °C)

BODY

AISI 316 stainless steel

FLANGES

Standard flange connections conforming to 150 lbs. ANSI drilling.

INTERMEDIATE COUPLING

Cast iron

IMPELLER

Design: closed

Material: AISI 316 stainless steel

SEAL

Design: mechanical, type 12.

Material: carbon/silicon-carbide faces, Viton elastomers and 316 stainless steel metal parts.

SEAL PLATE

AISI 316 stainless steel

SHAFT SLEEVE

AISI 316 stainless steel

O-RINGS

Viton

MOTOR

NEMA standard JM shaft extension from 3 to 20 HP at 3500 RPM and 0.5 to 5 HP at 1750 RPM. Single phase motors are 115/208–230 V. Three phase motors are 208–230/460V.

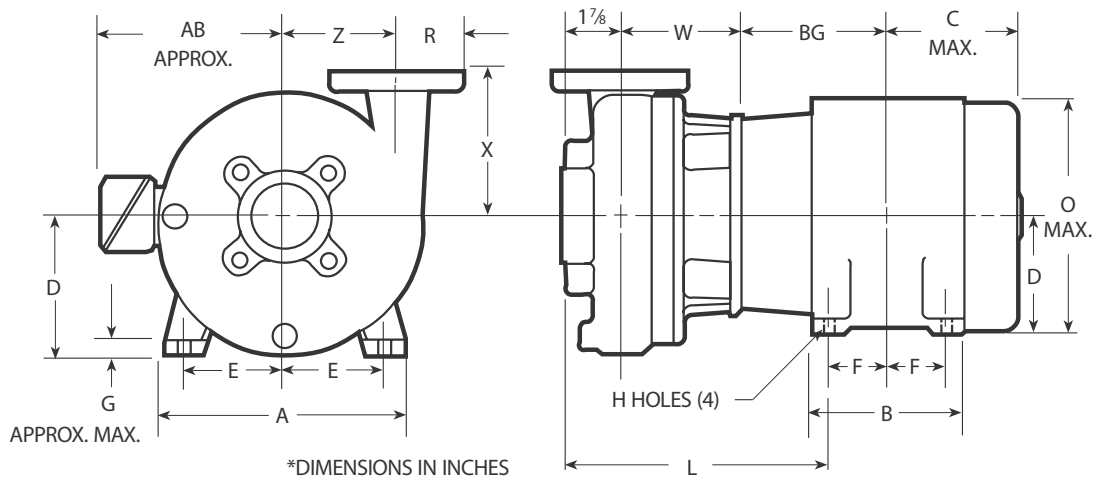
Overload protection must be provided.

HARDWARE

AISI 304 stainless steel

PAINT

Solvent based enamel (only intermediate coupling).



Liquid End Dimensions and Weights

MODEL	SIZE	DIMENSIONS					WEIGHT PUMP
		D	W	X	R	Z	
BCSF 1½ x 2-6	1½ x 2	4 ⁷ / ₃₂	4¼	5	2½	3½	35
BCSF 1½ x 2-8	1½ x 2	5¼	4¼	5½	2½	4¼	50
BCSF 2 x 3-7	2 x 3	5¼	4¼	6	3	4¼	50

(All dimensions are in inches and weight in pounds. Do not use for construction purposes.)

NOTE: Calculate total approximate weight by adding pump and motor weights.

Motor Frames

FRAME	MOTOR HORSEPOWER			
	SINGLE PHASE		THREE PHASE	
	ODP	TEFC	ODP	TEFC
145 JM	--	--	3	--
182 JM	3	--	5	3
184 JM	5	3	7½	5
213 JM	--	5	10	7½
215 JM	--	--	15	10/15
254 JM*	--	--	20	20
256 JM*	--	--	25	20

* With 215 JM shaft extension.

(ODP = Open Drip Proof)

(TEFC = Totally Enclosed Fan Cooled)

Motor Dimensions and Weights

FRAME JM	A	AB	B	BG	C MAX.	D	E	F	G	H	L	O MAX.	SINGLE PHASE		THREE PHASE	
													ODP	TEFC	ODP	TEFC
145	7	5 ⁷ / ₈	6	5 ³ / ₈	6 ¹ / ₈	3½	2 ³ / ₄	2½	7/16	11/32	9	7¼	--	--	39	--
182	9	8 ¹ / ₈	5 ³ / ₄	5 ⁷ / ₈	6 ³ / ₄	4½	3 ³ / ₄	2¼	9/16	13/32	9 ⁵ / ₈	9¼	75	--	69	62
184			6 ³ / ₄	6 ³ / ₈	7¼			2 ³ / ₄					--	82	78	74
213	10½	9 ¹ / ₁₆	7	7¼	8	5¼	4¼	3½	5/8	17/32	10 ⁵ / ₈	11¼	--	124	114	117
215			8½	8	8 ³ / ₄								--	--	136	147
254	12 ³ / ₈	10 ¹¹ / ₁₆	10½	9 ¹ / ₈	10	6¼	5	4 ¹ / ₈	5/8	10 ⁷ / ₈	13 ⁵ / ₃₂	--	--	--	205	256
256			12	10	10 ³ / ₄			5					--	--	221	--

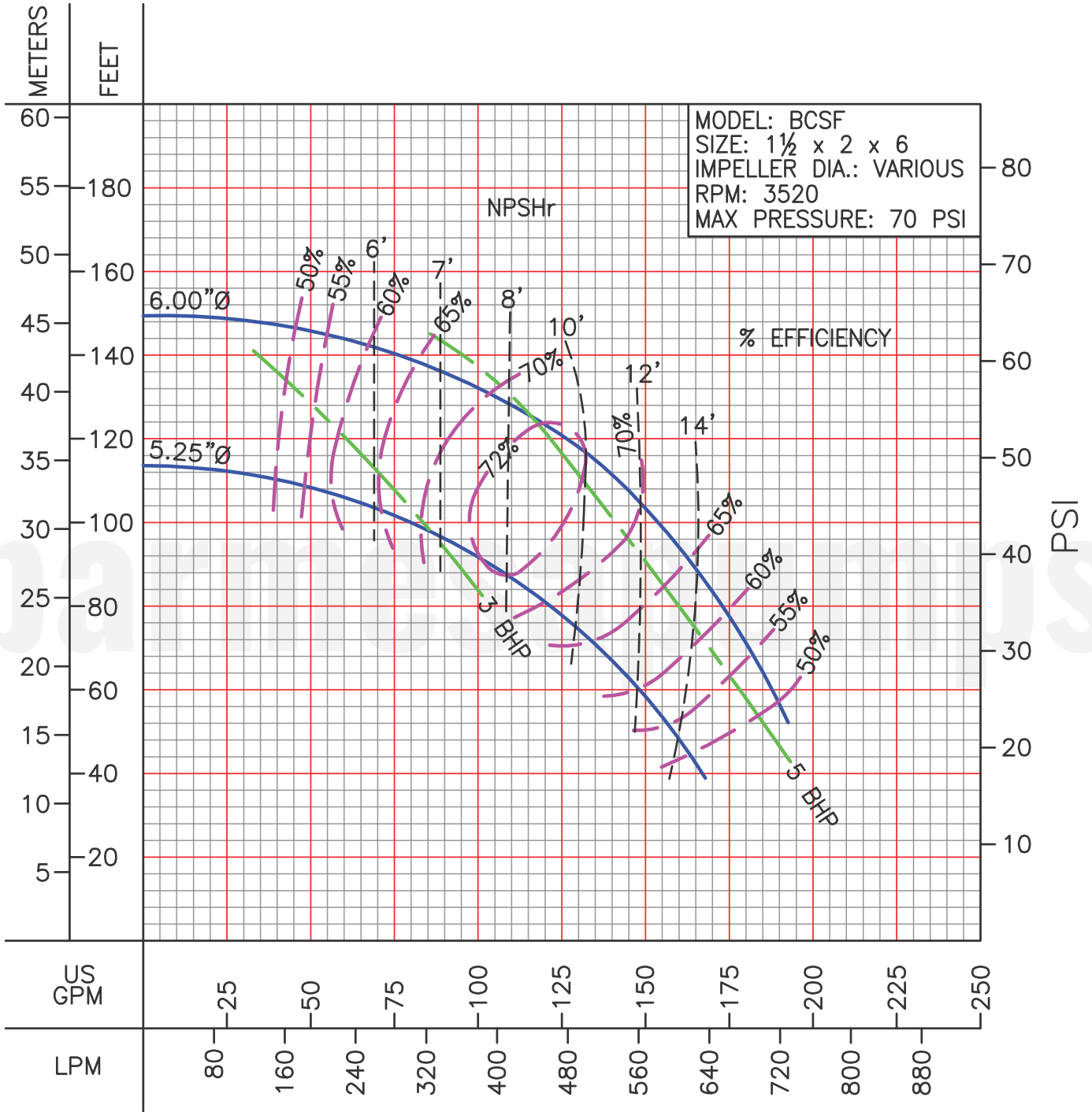
(All dimensions are in inches and weight in pounds. Do not use for construction purposes.)

Pumps will be shipped with top vertical discharge position as standard. For other orientations remove casing bolts, rotate discharge to desired position, replace and tighten bolts to 35 lbf-ft. Discharge may extend below motor mounting surface when using bottom horizontal position; adequate clearance must be provided. Standard casing will not be drilled and tapped for drain plugs; if tappings for 1/4" NPT drain plugs are required, order as options.

IMPORTANT!

1. Never use this pump to handle explosive liquids.

PERFORMANCE CURVES

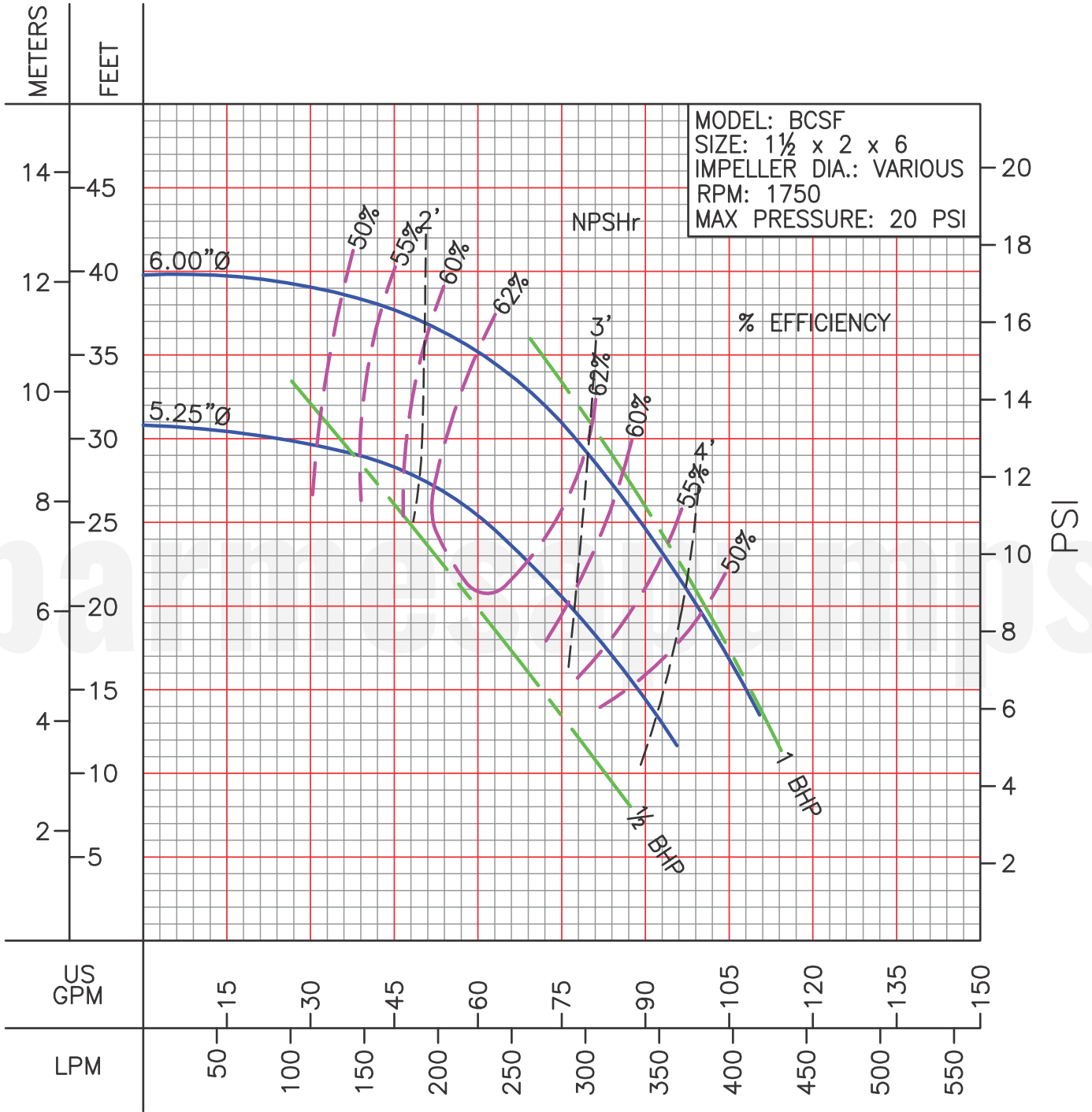


MODEL: BCSF
 SIZE: 1½ x 2 x 6
 IMPELLER DIA.: VARIOUS
 RPM: 3520
 MAX PRESSURE: 70 PSI

LIQUID: WATER
 SPECIFIC GRAVITY: 1.00

TEMPERATURE: 70° F (21° C)
 MAXIMUM DIA. SOLIDS: .38" in

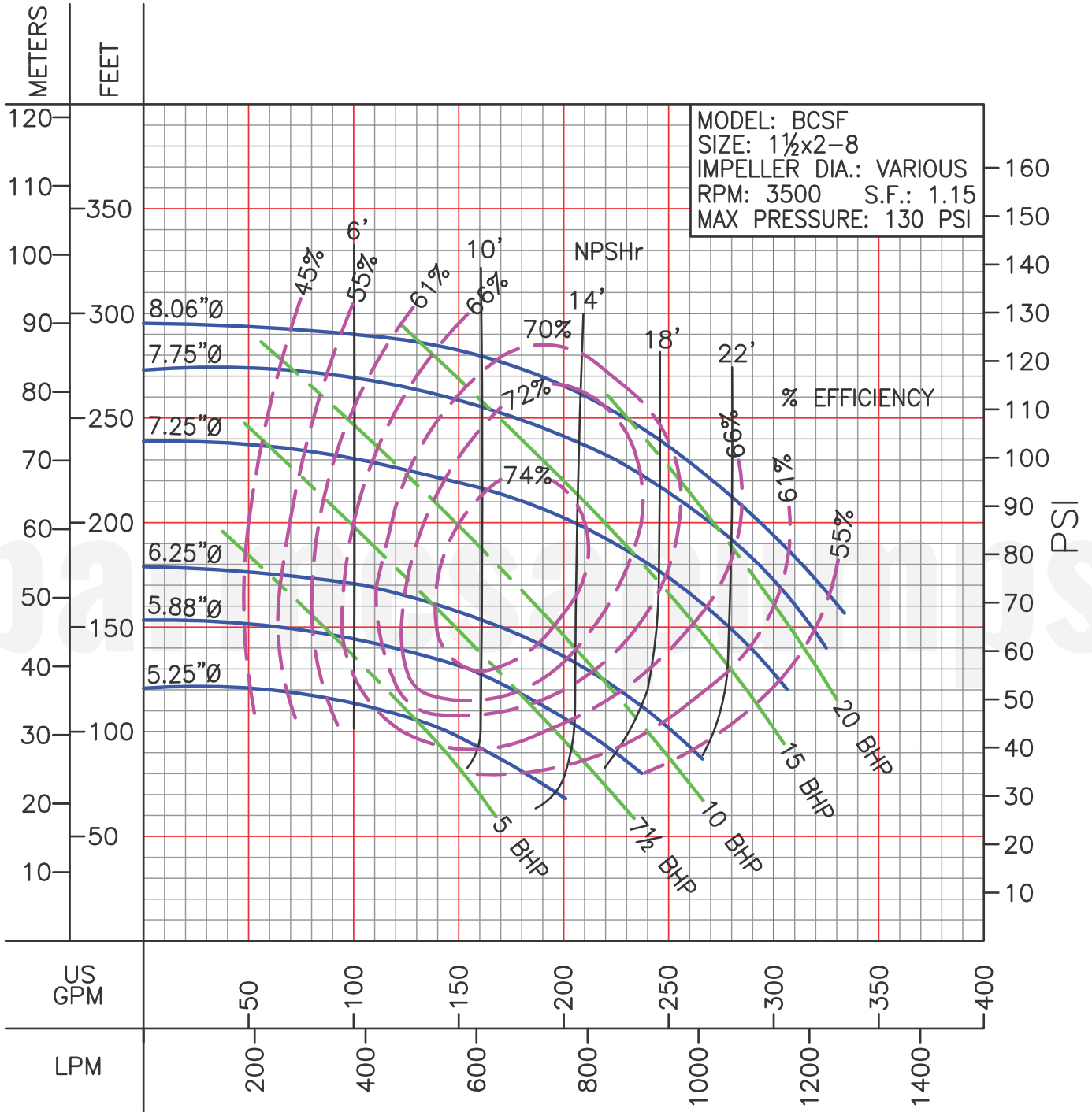
PERFORMANCE CURVES



LIQUID: WATER
 SPECIFIC GRAVITY: 1.00

TEMPERATURE: 70° F (21° C)
 MAXIMUM DIA. SOLIDS: .38" in

PERFORMANCE CURVES

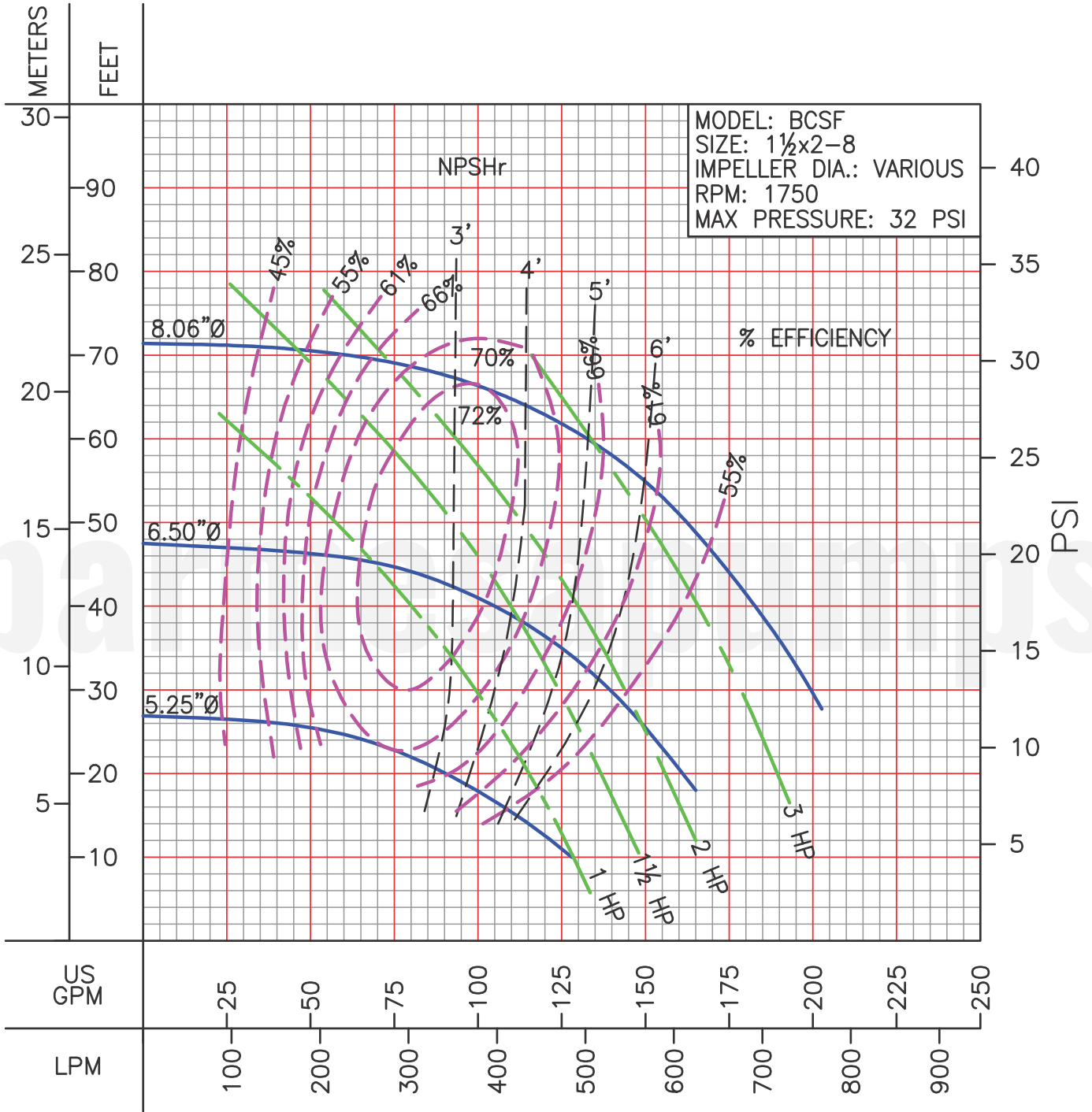


MODEL: BCSF
 SIZE: 1½x2-8
 IMPELLER DIA.: VARIOUS
 RPM: 3500 S.F.: 1.15
 MAX PRESSURE: 130 PSI

LIQUID: WATER
 SPECIFIC GRAVITY: 1.00

TEMPERATURE: 70° F (21° C)
 MAXIMUM DIA. SOLIDS: .38" in

PERFORMANCE CURVES

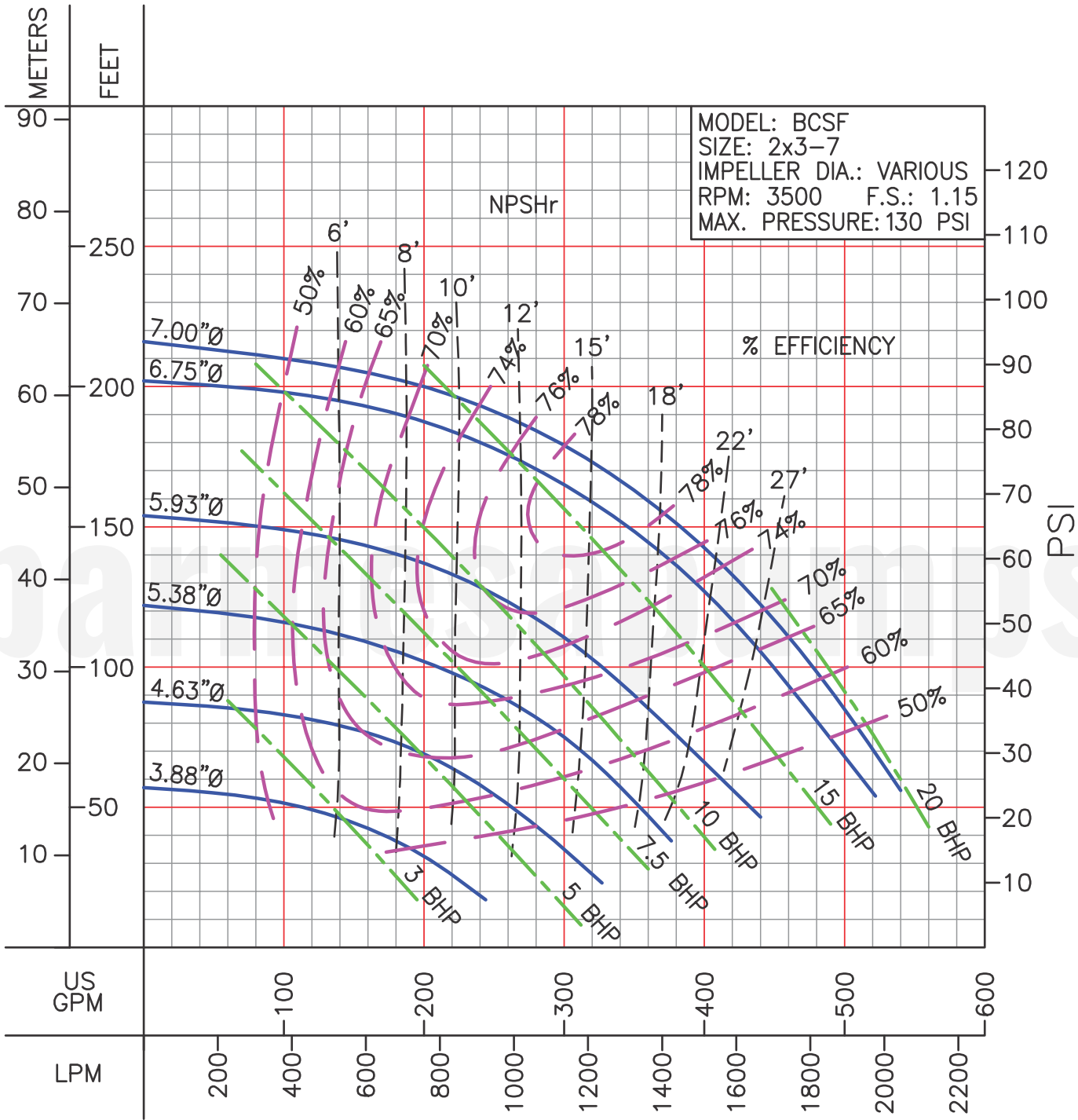


MODEL: BCSF
 SIZE: 1½x2-8
 IMPELLER DIA.: VARIOUS
 RPM: 1750
 MAX PRESSURE: 32 PSI

LIQUID: WATER
 SPECIFIC GRAVITY: 1.00

TEMPERATURE: 70° F (21° C)
 MAXIMUM DIA. SOLIDS: .38" in

PERFORMANCE CURVES

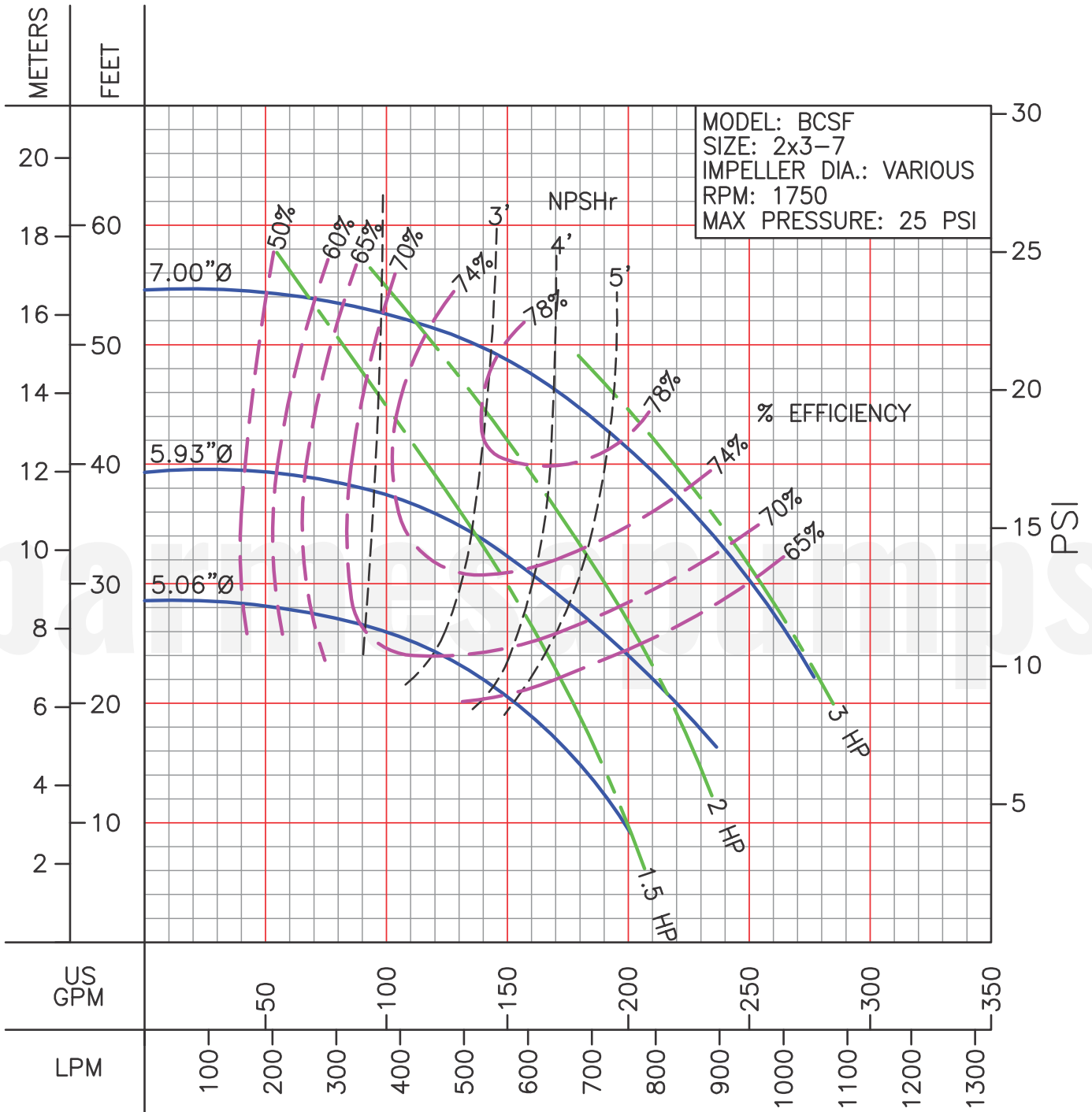


MODEL: BCSF
 SIZE: 2x3-7
 IMPELLER DIA.: VARIOUS
 RPM: 3500 F.S.: 1.15
 MAX. PRESSURE: 130 PSI

LIQUID: WATER
 SPECIFIC GRAVITY: 1.00

TEMPERATURE: 70° F (21° C)
 MAXIMUM DIA. SOLIDS: .56" in

PERFORMANCE CURVES



LIQUID: WATER
 SPECIFIC GRAVITY: 1.00

TEMPERATURE: 70° F (21° C)
 MAXIMUM DIA. SOLIDS: .56" in