



MARCH PUMPS

1819 PICKWICK AVE., GLENVIEW, IL 60026-1306, U.S.A
 PHONE: (847) 729-5300 - FAX: (847) 729-7062
 WWW.MARCHPUMP.COM

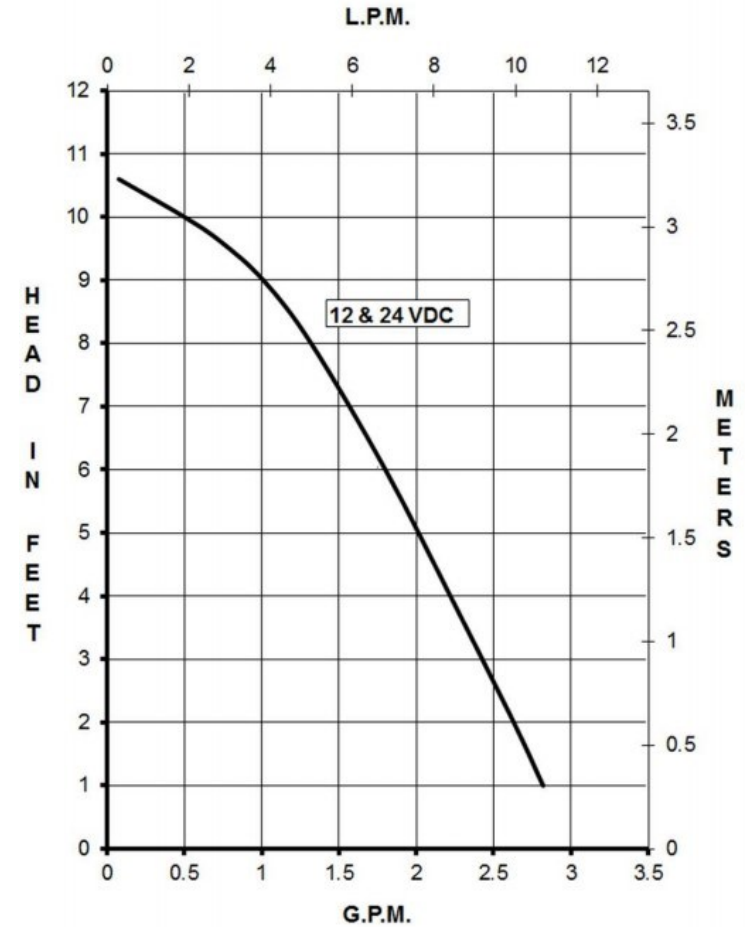
DESCRIPTION & OPERATION: Series 893 are centrifugal magnetic drive pumps, eliminating the need for a shaft seal. A flooded suction is essential for operation since the pump is not self-priming. Pumps cannot be run dry because the impeller requires the liquid being pumped for lubrication. The motor has a cap over the rear of the motor allowing the pump to be rated IP55. For application assistance, contact March Pump.

ELECTRICAL: The Brushless Motors have voltage protection. Red lead is positive, black lead is negative.

Model 893-13 (12 VDC) starts at 5.5 V \pm 0.5 V and turns off at 17.5 V \pm 0.5 V.

Model 893-14 (24 VDC) starts at 8.5 V \pm 0.5 V and turns off at 28 V \pm 0.5 V.

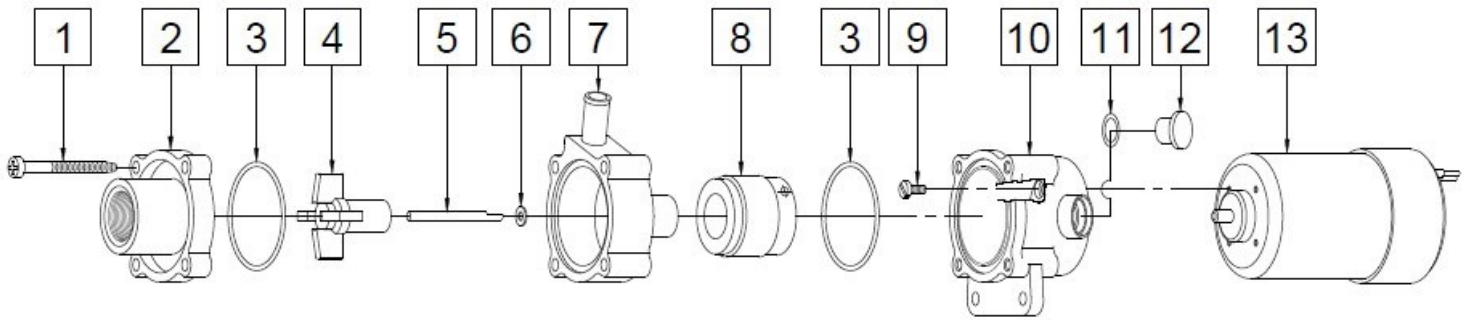
893 Brushless Paragon Motor w/Cap and Voltage Protection 893-15 & 893-16



Specifications		893-15 (12V DC)	893-16 (24V DC)
Product	P/N	0893-0081-0100	0893-0082-0100
Inlet-Outlet		3/8" FPT-3/8" OD	3/8" FPT-3/8" OD
Max Internal Pressure		50PSI (344 kPa)	50PSI (344 kPa)
Max Liquid Temperature		190F (87C)	190F (87C)

Model	Max Flow		Max Head			Electrical					Packed Weight
	GPM	LPM	FT	PSI	M	Voltage	Amps	HP	kW	RPM	Pounds
893-15	2.7	11	10.6	4.5	3.3	12	0.85	1/150	0.004	4000	1.5
893-16	2.7	11	10.6	4.5	3.3	24	0.5	1/150	0.004	4000	1.5

All specifications & data are based on pumping water & are intended as a guideline only. Specifications may vary with different motors.



NOTE

893-15 (12V DC)

893-16 (24V DC)

Item	Part Number	QTY REQ	Description	Item	Part Number	QTY REQ	Description
1	0115-0062-1000	4	#7-19 x 1-7/16" Long Self-Tapping Screw (Stainless)	1	0115-0062-1000	4	#7-19 x 1-7/16" Long Self-Tapping Screw (Stainless)
2	0893-0004-1000	1	3/8" FPT Inlet Cover (Noryl)	2	0893-0004-1000	1	3/8" FPT Inlet Cover (Noryl)
3	0115-0018-1000	2	1/16" CS x 1-7/16" OD "O" Ring (Buna N)	3	0115-0018-1000	2	1/16" CS x 1-7/16" OD "O" Ring (Buna N)
4	0115-0119-1000	1	Encapsulated Impeller (Polypropylene)	4	0115-0119-1000	1	Encapsulated Impeller (Polypropylene)
5	0115-0032-1000	1	Shaft (316 Stainless)	5	0115-0032-1000	1	Shaft (316 Stainless)
6	0115-0033-1000	1	Rear Thrust Washer (Carbon/Teflon)	6	0115-0033-1000	1	Rear Thrust Washer (Carbon/Teflon)
7	0893-0003-1000	1	3/8" OD Outlet Rear Housing (Noryl)	7	0893-0003-1000	1	3/8" OD Outlet Rear Housing (Noryl)
8	0115-0101-0100	1	Drive Magnet	8	0115-0101-0100	1	Drive Magnet
9	0893-0066-1000	4	#4-40 x 0.147" Long Screw (Stainless)	9	0893-0066-1000	4	#4-40 x 0.147" Long Screw (Stainless)
10	0893-0035-1000	1	Motor Bracket (Plastic)	10	0893-0035-1000	1	Motor Bracket (Plastic)
11	0210-0008-1000	1	1/16" CS x 7/16" OD O-Ring (Viton)	11	0210-0008-1000	1	1/16" CS x 7/16" OD O-Ring (Viton)
12	0125-0110-1000	1	Plug (Plastic)	12	0125-0110-1000	1	Plug (Plastic)
13	0893-0083-0100	1	12V DC Brushless Motor (Paragon) and Cap	13	0893-0084-0100	1	24V DC Brushless Motor (Paragon) and Cap

NOTE: Contact Factory for other materials and/or parts not listed.
 Special voltage motors are available upon special order.

Materials in contact with the liquid: Noryl, Polypropylene, Carbon/Teflon, Buna N, 316 Stainless Steel

LIMITED WARRANTY: March pumps are guaranteed only against defects in workmanship or materials for a period of one year from date of manufacture pumping water. For the complete warranty and to register online go to www.marchpump.com/warranty-registration

Order Online: www.PumpCatalog.com