

EXPLODED VIEW & PARTS LISTING




Model: DP-10BS[X]-D
Stainless-Steel Drum Pump Series





Air Operated Double Diaphragm Pump



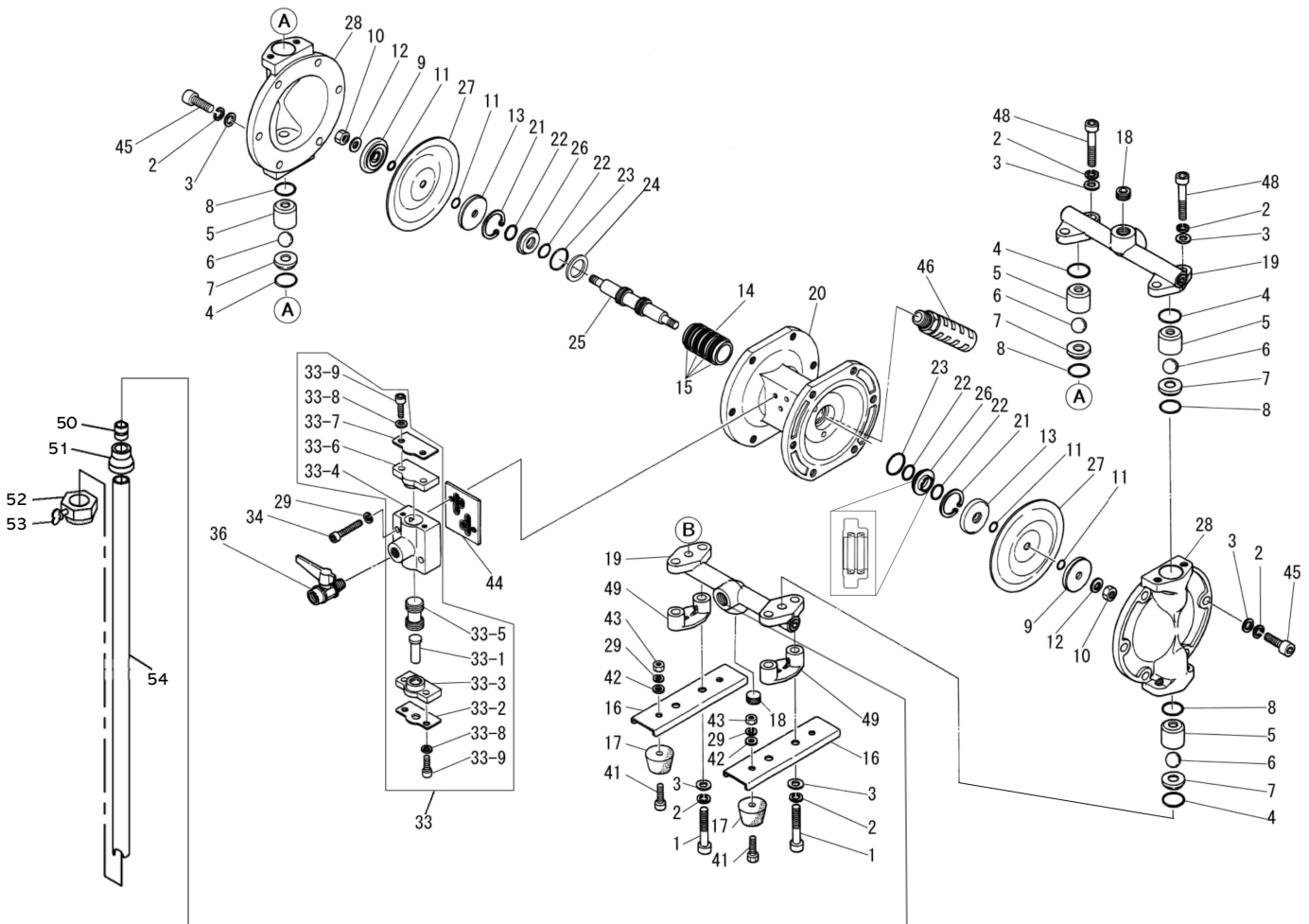
To Purchase:

-  800-990-7867
-  sales@yamadapump.com
-  Find My Rep

More Information:

-  YouTube: @yamadapump
-  yamadapump.com
- Data Sheets | CAD Drawings | Manuals Literature | BOM | Performance Curves*

Trial Program

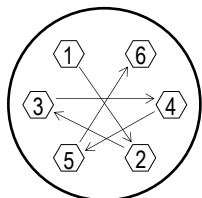


Order Online: www.PumpCatalog.com

Air Operated Double Diaphragm Pump

REF. No.	DP-10BSC-D PART No.	DP-10BSN-D PART No.	DP-10BSH-D PART No.	DP-10BSS-D PART No.	DP-10BST-D PART No.	DESCRIPTION	QTY.	REORDER
1	682971	682971	682971	682971	682971	HEXAGON BOLT	8	
2	681300	681300	681300	681300	681300	SPRING LOCK WASHER	20	
3	631329	631329	631329	631329	631329	PLAIN WASHER	20	
4	640018	640018	640018	684112	643018	O-RING	8	
5	710637	710637	710637	710637	710637	VALVE STOPPER	4	
6	770970	770972	773124	773168	770931	BALL	4	
7	708913	708913	708913	708913	708913	VALVE SEAT	4	
9	708506	708506	708506	708506	708506	CENTER DISK (OUTER)	2	
10	681849	681849	681849	681849	681849	NUT	2	
11	640005	640005	-	-	643005	O-RING	4	
12	684916	684916	684916	684916	684916	CONED DISK SPRING	2	
13	709512	709512	709512	709512	709512	CENTER DISK (INNER)	2	
14	714678	714678	714678	714678	714678	SLEEVE	1	
15	684900	684900	684900	684900	684900	O-RING	4	
16	717184	717184	717184	717184	717184	PUMP BASE	2	
17	771123	771123	771123	771123	771123	CUSHION	4	
18	710914	710914	710914	710914	710914	HEXAGON PLUG	2	
19	831559	831559	831559	831559	831559	MANIFOLD	2	
20	715107	715107	715107	715107	715107	BODY	1	
21	630807	630807	630807	630807	630807	RETAINER RING R TYPE	2	
22	684284	684284	684284	684284	684284	PACKING	4	
23	640131	640131	640131	640131	640131	O-RING	2	
24	772651	772651	772651	772651	772651	SPACER	1	
25	801785	801785	801785	801785	801785	CENTER ROD ASSY.	1	
26	772619	772619	772619	772619	772619	GUIDE BUSH	2	
27	770971	770973	771372	771972	770933	DIAPHRAGM	2	
28	710660	710660	710660	710660	710660	OUT CHAMBER	2	
29	681855	681855	681855	681855	681855	SPRING LOCK WASHER	6	
33	804505	804505	804505	804505	804505	VALVE BODY ASSY.	1	
33-1	706798	706798	706798	706798	706798	RESET BUTTON	1	
33-2	710587	710587	710587	710587	710587	REINFORCEMENT PLATE A	1	
33-3	771357	771357	771357	771357	771357	CAP	1	
33-4	710853	710853	710853	710853	710853	SPOOL VALVE CASE	1	
33-5	801404	801404	801404	801404	801404	SPOOL VALVE ASSY.	1	
33-6	771356	771356	771356	771356	771356	CAP	1	
33-7	710636	710636	710636	710636	710636	REINFORCEMENT PLATE B	1	
33-8	681855	681855	681855	681855	681855	SPRING LOCK WASHER	4	
33-9	682943	682943	682943	682943	682943	HEXAGON BOLT	4	
34	682918	682918	682918	682918	682918	HEXAGON BOLT	2	
36	686826	686826	686826	686826	686826	BALL VALVE	1	
41	621102	621102	621102	621102	621102	BOLT	4	
42	631328	631328	631328	631328	631328	PLAIN WASHER	4	
43	628010	628010	628010	628010	628010	NUT	4	
44	771358	771358	771358	771358	771358	GASKET	1	
45	682944	682944	682944	682944	682944	HEXAGON BOLT	12	
46	682520	682520	682520	682520	682520	SILENCER	1	
48	681297	681297	681297	681297	681297	HEXAGON BOLT	4	
49	771380	771380	771380	771380	771380	SPACER	2	
50	10A-NIPP	10A-NIPP	10A-NIPP	10A-NIPP	10A-NIPP	NIPPLE	1	
51	10A-BUSH	10A-BUSH	10A-BUSH	10A-BUSH	10A-BUSH	REDUCER BUSH	1	
52	15A-BUNG	15A-BUNG	15A-BUNG	15A-BUNG	15A-BUNG	BUNG ADAPTER	1	
53	91745A542	91745A542	91745A542	91745A542	91745A542	THUMB SCREW	1	
54	15A-PIPE	15A-PIPE	15A-PIPE	15A-PIPE	15A-PIPE	PIPE	1	
KIT	DP-10D					DRUM KIT		
KIT	K10-SC	K10-SN	K10-SH	K10-SS	K10-ST	LIQUID SIDE KIT		
KIT	K115-AM					AIR MOTOR KIT		

Air Operated Double Diaphragm Pump



Tightening torque for center rod and out chambers.

Center Rod	122 in-lbf {14 N-m}
Out Chambers	105 in-lbf {12 N-m}

Tightening torque for manifold retainer bolts.

BSC/H/N/S/T	105 in-lbf {12 N-m}
-------------	---------------------

General Tools:

- Socket wrench - 13mm
- Hexagonal box wrenches - 5mm, 6mm
- Snap ring pliers 12-25mm

Miscellaneous:

- Assembly Oil—turbine oil none additional class 1 (equivalent to ISO VG32 grade)
- Nuts—M8 x 1.25 (BS_)
- Urea grease grade (NLGI) No. 2

Order Online: www.PumpCatalog.com

Customer Notes

Model #: _____
 Description: _____
 Serial #: _____
 Date Installed: _____
 Department Location: _____
 Tag/Project: _____