

BALDOR® • *RELIANCE*

Product Information Packet

CESSWDM3558T

2HP, 1755RPM, 3PH, 60HZ, 145TC, 3536M, TEFC, F1

| Part Detail | | | | | | | |
|-------------|-------|----------------|-------|-------------|----------|---------------|------------|
| Revision: | Q | Status: | PRD/A | Change #: | | Proprietary: | No |
| Type: | AC | Prod. Type: | 3536M | Elec. Spec: | 35WGP883 | CD Diagram: | CD0005 |
| Enclosure: | TEFC | Mfg Plant: | | Mech. Spec: | 35VV818 | Layout: | 35LYVV818 |
| Frame: | 145TC | Mounting: | F1 | Poles: | 04 | Created Date: | 03-04-2010 |
| Base: | RG | Rotation: | R | Insulation: | F | Eff. Date: | 06-08-2016 |
| Leads: | 9#18 | | | | | Replaced By: | |
| Literature: | | Elec. Diagram: | | | | | |

| | | | | | | | | | | |
|----------------------------|---------------|--|-------------|------------|-----------------------|----|--|--------------|-----------|---|
| Nameplate NP1953A01 | | | | | | | | | | |
| CAT.NO. | CESSWDM3558T | | | | | | | | | |
| SPEC. | 35VV818P883G1 | | | | | | | | | |
| HP | 2 | | | | | | | | | |
| VOLTS | 230/460 | | | | | | | | | |
| AMP | 5.6/2.8 | | | | | | | | | |
| RPM | 1755 | | | | | | | | | |
| FRAME | 145TC | | | | HZ | 60 | | | PH | 3 |
| SER.F. | 1.15 | | CODE | M | DES | B | | CLASS | F | |
| NEMA-NOM-EFF | 88.5 | | | PF | 76 | | | | | |
| RATING | 40C AMB-CONT | | | | | | | | | |
| CC | 010A | | | | USABLE AT 208V | | | 5.9 | | |
| DE | 6205 | | | ODE | 6203 | | | | | |
| ENCL | TEFC | | SN | | | | | | | |

| Parts List | | |
|-------------|--|----------|
| Part Number | Description | Quantity |
| SA191851 | SA 35VV818P883G1 | 1.000 EA |
| RA179507 | RA 35VV818P883G1 | 1.000 EA |
| 35FN3002A05 | EXFN, PLASTIC, 6.376 OD, .638 ID | 1.000 EA |
| NS2512A01 | INSULATOR, CONDUIT BOX X | 1.000 EA |
| 35CB5001A17 | KOBX KIT, (ALL STAINLESS) W/ .75 NPT | 1.000 EA |
| HA5027A02 | HA4054 T-DRAIN X2 BAGGED WITH LABEL | 1.000 EA |
| 11XW1032G06 | 10-32 X .38, TAPTITE II, HEX WSHR SLTD U | 1.000 EA |
| HW3001B01 | BRASS CUP WASHER, FOR #8 SCREW | 1.000 EA |
| 35FE1913A02 | FR ENDPLATE ASSY | 1.000 EA |
| HW4606A01 | JM CLIPPER/SEAL (WDE-0667-1064-BH49) | 1.000 EA |
| HW5100A03SP | WAVY WASHER (W1543-017) | 1.000 EA |
| 35PE1914A02 | PU EP ASSY. FOR LOCKED BRG | 1.000 EA |
| HW4606A02 | JM CLIPPER/SEAL (LWE-0938-1624-AL23) | 1.000 EA |
| 12XN1032S22 | 10-32 X 1 3/8 SLOT HEX, STAINLESS STEEL | 2.000 EA |
| HA1049A01 | DUBO LOK WASHER SIZE 10 (NYLON LOCK SEAL | 2.000 EA |
| HA1049A01 | DUBO LOK WASHER SIZE 10 (NYLON LOCK SEAL | 4.000 EA |
| 51XB1214A16 | 12-14X1.00 HXWSSLD SERTYB | 1.000 EA |
| 35FH4005A39 | IEC FH NO GREASER (#304 SS)CLEAN ONLY | 1.000 EA |
| 10XN1032S06 | HEX HD CAP SCREW, SS | 3.000 EA |
| HW2502D13 | SS KEY, 3/16 SQ X 1.375 | 1.000 EA |
| HA7000A01 | KEY RETAINER 7/8" DIA SHAFT | 1.000 EA |
| MJ5001A02 | 732 CL SEALANT 3 OZ DIXIE BEARING 289100 | 0.001 EA |
| HW3001B01 | BRASS CUP WASHER, FOR #8 SCREW | 1.000 EA |
| MJ1000A02 | GREASE, POLYREX EM EXXON (USe 4824-15A) | 0.050 LB |

| Parts List (continued) | | |
|-------------------------------|--|-----------------|
| Part Number | Description | Quantity |
| 51XB1214A16 | 12-14X1.00 HXWSSLD SERTYB | 1.000 EA |
| HA3100S04 | THRUBOLT- 10-32 X 11.250 302 OR 303 SS | 4.000 EA |
| 36PA1000 | PKG GRP, PRINT PK1016A06 | 1.000 EA |
| MN416A01 | TAG-INSTAL-MAINT no wire (1200/bx) 11/14 | 1.000 EA |

AC Induction Motor Performance Data

Record # 57391 - Typical performance - not guaranteed values

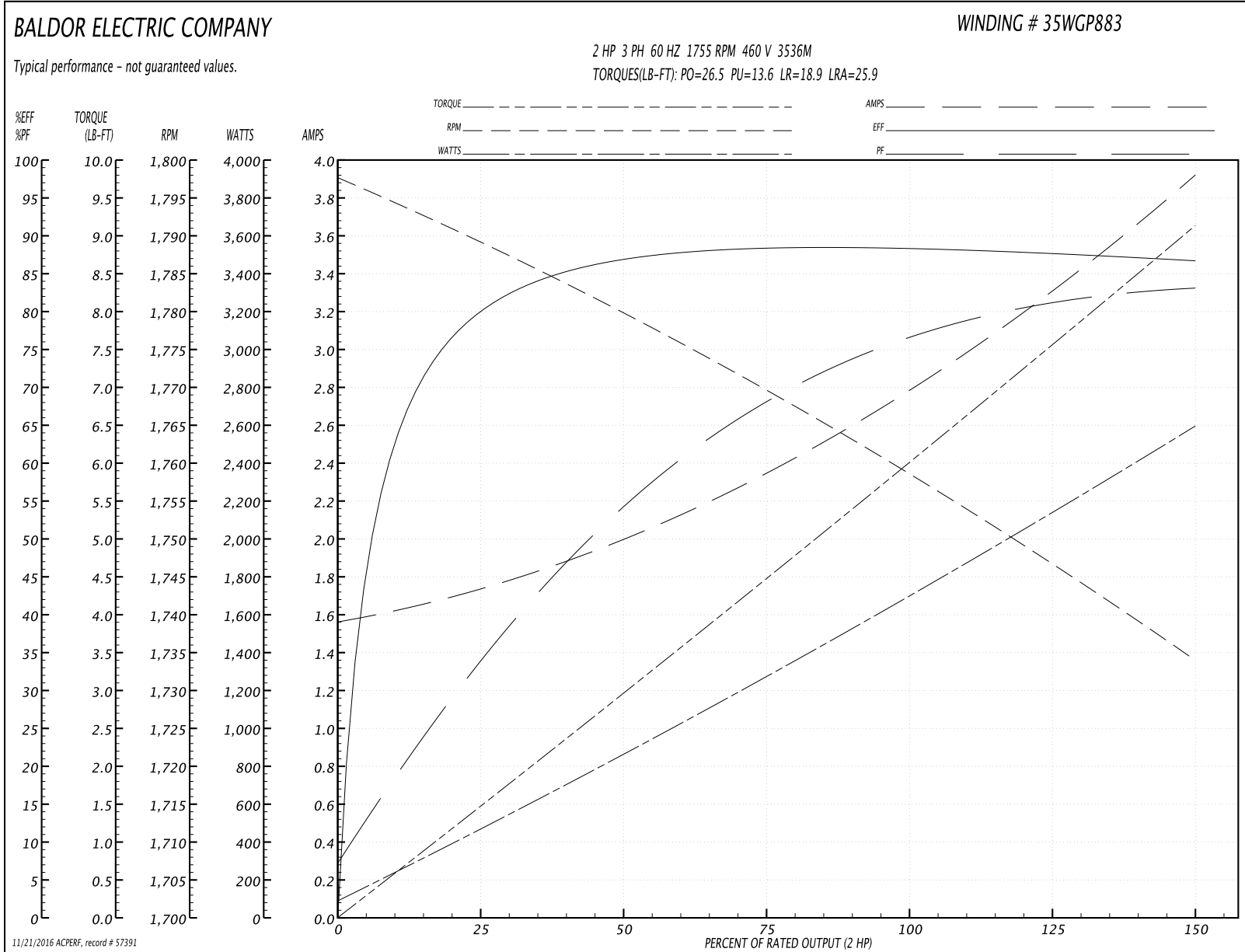
| | | |
|-------------------------------|--------------------|------------------------|
| Winding: 35WGP883-R006 | Type: 3536M | Enclosure: TEFC |
|-------------------------------|--------------------|------------------------|

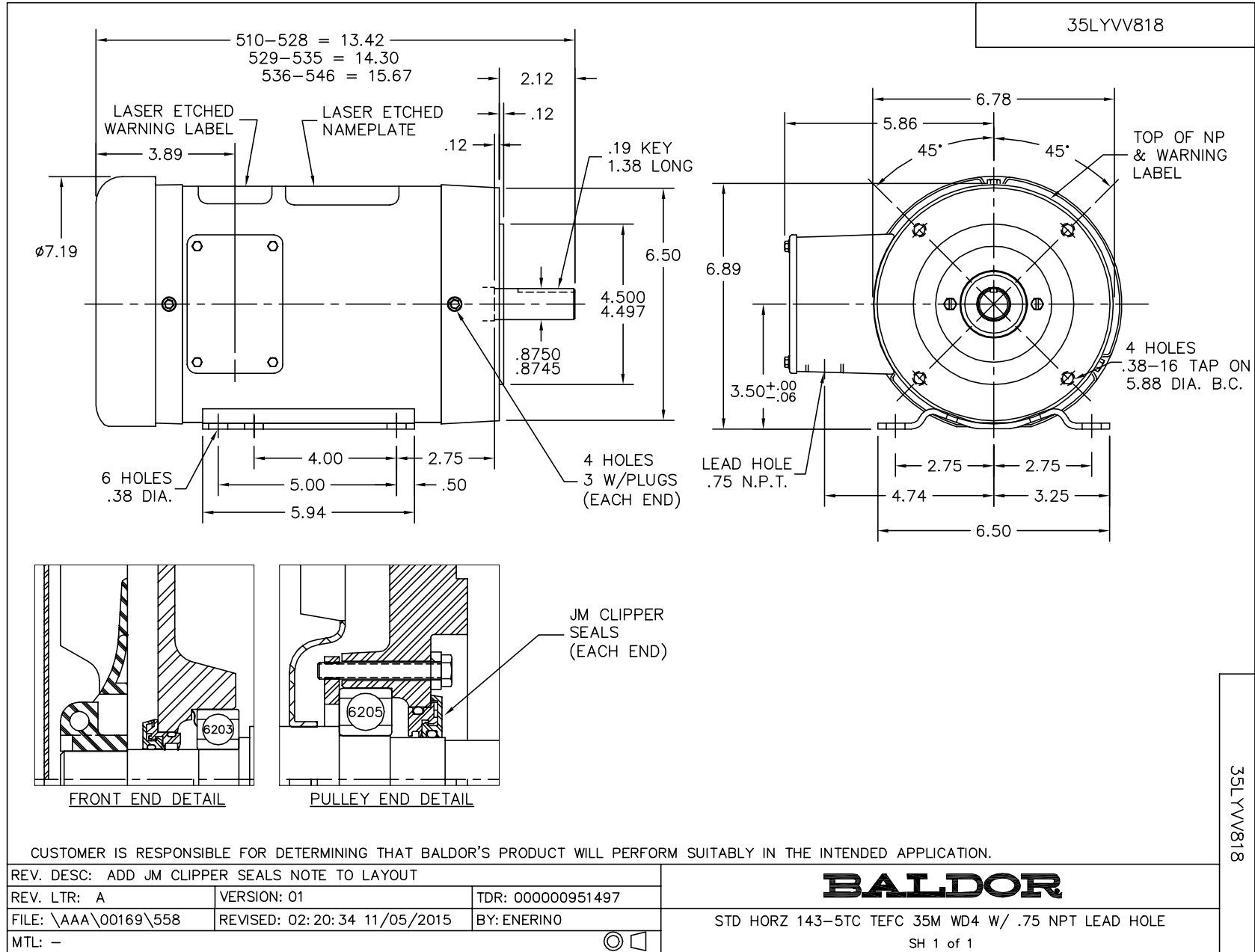
| Nameplate Data | | | | 460 V, 60 Hz: High Voltage Connection | |
|-----------------------|--------------|--------------|----|--|--------------------------|
| Rated Output (HP) | 2 | | | Full Load Torque | 5.934 LB-FT |
| Volts | 230/460 | | | Start Configuration | direct on line |
| Full Load Amps | 5.6/2.8 | | | Breakdown Torque | 26.5 LB-FT |
| R.P.M. | 1755 | | | Pull-up Torque | 13.6 LB-FT |
| Hz | 60 | Phase | 3 | Locked-rotor Torque | 18.9 LB-FT |
| NEMA Design Code | B | KVA Code | M | Starting Current | 25.9 A |
| Service Factor (S.F.) | 1.15 | | | No-load Current | 1.59 A |
| NEMA Nom. Eff. | 88.5 | Power Factor | 76 | Line-line Res. @ 25°C | 6.7876 Ω |
| Rating - Duty | 40C AMB-CONT | | | Temp. Rise @ Rated Load | 46°C |
| S.F. Amps | | | | Temp. Rise @ S.F. Load | 55°C |
| | | | | Locked-rotor Power Factor | 46 |
| | | | | Rotor inertia | 0.213 LB-FT ² |

Load Characteristics 460 V, 60 Hz, 2 HP

| % of Rated Load | 25 | 50 | 75 | 100 | 125 | 150 | S.F. |
|-----------------|--------|------|------|--------|--------|--------|------|
| Power Factor | 34 | 55 | 67 | 76 | 81 | 84 | 79 |
| Efficiency | 79.4 | 86.8 | 88.3 | 88.5 | 87.8 | 86.7 | 88.1 |
| Speed | 1788.9 | 1780 | 1770 | 1759.1 | 1747.2 | 1733.9 | 1752 |
| Line amperes | 1.7 | 1.97 | 2.35 | 2.78 | 3.31 | 3.9 | 3.1 |

Performance Graph at 460V, 60Hz, 2.0HP Typical performance - Not guaranteed values





CD0005

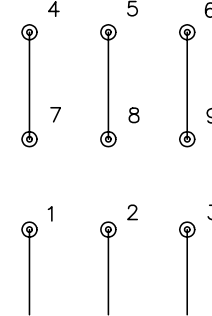


LOW VOLTAGE
(2Y)



LINE

HIGH VOLTAGE
(1Y)



LINE

NOTES:

1. INTERCHANGE ANY TWO LINE LEADS TO REVERSE ROTATION.
2. OPTIONAL THERMOSTATS ARE PROVIDED WHEN SPECIFIED.
3. ACTUAL NUMBER OF INTERNAL PARALLEL CIRCUITS MAY BE A MULTIPLE OF THOSE SHOWN ABOVE.
4. LEAD COLORS ARE OPTIONAL. LEADS MUST ALWAYS BE NUMBERED AS SHOWN.

| | | | |
|---|---------|-------------------------|--------------|
| REV. DESC: REVISE TO SHOW OPTIONAL COLORS | | | |
| REV. LTR: E | BY: JLP | REVISED: 01/19/99 10:15 | TDR: 0171435 |
| 9000D | | FILE: AAA00005140 | MDL: - |
| | | MTL: - | |

BALDOR ELECTRIC Co.

3PH, DV, 9 LEADS

CD0005