

BALDOR® • **RELIANCE**

Product Information Packet

IDDRPM445006R1

500HP, 1190/2400RPM, 460V, 3PH, DPGFV, RL4461

Part Detail							
Revision:	-	Status:	PRD/A	Change #:		Proprietary:	No
Type:	AC	Prod. Type:		Elec. Spec:	L2046A	CD Diagram:	422927-001
Enclosure:	DPFV	Mfg Plant:		Mech. Spec:		Layout:	617602-001
Frame:	RL4461	Mounting:	F1	Poles:	06	Created Date:	04-09-2015
Base:		Rotation:	R	Insulation:	H	Eff. Date:	04-13-2015
Leads:						Replaced By:	
Literature:		Elec. Diagram:					

		DUTY	HP	RPM	AMPS	VOLTS	HZ		
	CONT		500	1190	669	460	60		
	CONT		500	2400	604	460	121.1		
CAT.NO.	IDDRPM445006R1			SPEC. NO.		P44R1368			
SER.NO.				FR	RL 4461	INSUL	H		
PH.	3		MAX SAFE SPEED	2700		AMB.	50		
DESIGN NO.	L2046A			TYPE				ENCL.	DP
S.F.	1.00			D.E. BRG.	110BC02J30X				
ENCL MOD	FORCE VENT			O.D.E. BRG.	6222MCVL0241				
								MIN. AMB.	0

Parts List		
Part Number	Description	Quantity
WS286567	WS P44R1368	1.000 EA
RA282814	RA P44R1368	1.000 EA
000613006MY	NP-RPMAC INVERTER DUTY	1.000 EA
000692000EF	CAUTION LABEL	1.000 EA
000692000FP	NP, WARNING LIFT INSTRUCTIONS	1.000 EA
000692000VD	LABEL WARNING	1.000 EA
418057249A	LABEL (WARNING)	1.000 EA
418057747A	METAL FASTENER	8.000 EA
422927001	C/D LABEL	1.000 EA
004824007AB	PAINT,XT	0.300 EA
034141437AA	SNAP RING,BRG. LE	1.000 EA
004824015A	GREASE POLYREX EM	1.100 LB
034693003AB	PPLG 3/8" SLOT PIPE PLUG	1.000 EA
034693003AB	PPLG 3/8" SLOT PIPE PLUG	1.000 EA
035000001A	ALFTG 1/8" 1610-BL	1.000 EA
035000001BB	GREASE FTG,GRS.IN	1.000 EA
036000012JB	M8-1.25 X 12MM HXHDC	12.000 EA
036000070PB	HHCS M20-2.5X70MM PLTD.	4.000 EA
036000070PB	HHCS M20-2.5X70MM PLTD.	4.000 EA
036000080KB	HHCSM10-1.5X80MMPLTD-360	4.000 EA
036000090KB	HHCS,DE CAP - 400	4.000 EA
036140001F	M30-3.5 X 45MM EYEBOLT	2.000 EA
412118001B	3/8-16 X 3/4 DRAIN SSTL.	1.000 EA
412118001B	3/8-16 X 3/4 DRAIN SSTL.	1.000 EA

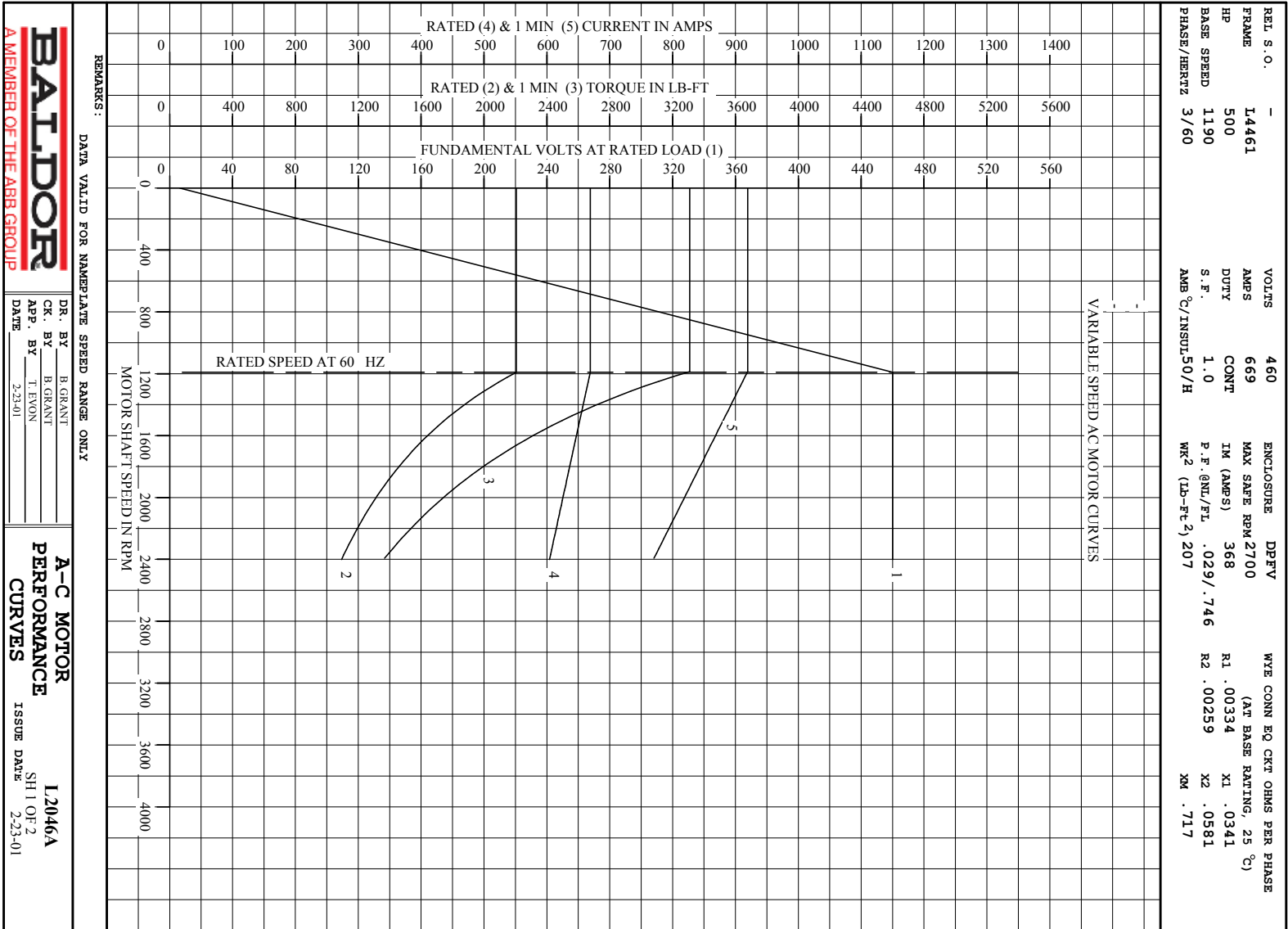
Parts List (continued)		
Part Number	Description	Quantity
418150003A	GREASE FITTING CAP	2.000 EA
424433001A	WAVY SPRING WSHER	1.000 EA
611917002Y	GASKET, NEOPRENE	1.000 EA
611917002Y	GASKET, NEOPRENE	1.000 EA
708518003A	COVER, HANDHOLE-SOLID	1.000 EA
708518003A	COVER, HANDHOLE-SOLID	1.000 EA
708532007A	L440 AIR BAFFLE	1.000 EA
804831001B	BRKT,DE,L440	1.000 EA
808011002AA	RL440, BRACKET	1.000 EA
000613006NT	NAME PLATE IEC	1.000 EA
032018008CK	HHCS 3/8-16X1L PLATED	4.000 EA
032018008DK	HHCS 1/2-13X1 PLATED	4.000 EA
036000012KB	M10 1.50 X 12MM HXHDCS	4.000 EA
036000016HD	HXHCS	8.000 EA
036000016KB	HHCSM10-1.5X16MM PLTD-280	2.000 EA
036000020JB	HHCS M8-1.25X20L PLTD-250	8.000 EA
036000020JD	HHCS M8X20MM LONG 304S.S	5.000 EA
036000025JB	HHCS M8X25MM LONG PLATED	8.000 EA
036000070LB	MHHCS M12-1.75X70M -360	4.000 EA
036100020JA	M8-1.25 X 20MM HXSOCHDCS	6.000 EA
036600008AD	FLTWSHR,T BLK SPT	8.000 EA
036620010AB	M10 EXT. TOOTH LK WASHER	1.000 EA
036620010AB	M10 EXT. TOOTH LK WASHER	2.000 EA
417733036B	GASKT,C/BOX BACKPLATE,REF 706310063E	1.000 EA

Product Information Packet: IDDRPM445006R1 - 500HP,1190/2400RPM,460V,3PH,DPGFV,RL4461

410978021A	FLANGE, INLET BLOWER HSG	1.000 EA
415000103F	TLUG	2.000 EA
417733004M	GASKT	2.000 EA
417733013E	GASKT L440	1.000 EA
417733014F	GASKT L440	1.000 EA
418010012F	COVER	1.000 EA
418018074A	GROUND LABEL G100 METRIC 160 D.C.	4.000 EA
418019012A	SETSCREW METRIC	2.000 EA
418057256C	HHCS M10 25MM 440 IEC	1.000 EA
422919315	CVRKT PHANTOM	1.000 EA
422919316	CVRKT PHANTOM	1.000 EA
422919316	CVRKT PHANTOM	1.000 EA
422919317	CVRKT PHANTOM	1.000 EA
422919317	CVRKT PHANTOM	1.000 EA
610409082A	ADAPTER	1.000 EA
610490003F	5HP,3450RPM,3PH,60HZ,184TC,3630M,TEFC,F1	1.000 EA
611917002Y	GASKET, NEOPRENE	1.000 EA
611917002Z	GASKT	1.000 EA
706305301A	GUARD, SHAFT	1.000 EA
706310058E	KOBX CVR - 18.90 [480] X 19.49 [495]	1.000 EA
706310059F	ADAPT L440 REK	1.000 EA
706310063E	CBOX L440 1260A MAX	1.000 EA
706310082A	ADAPT (CBOX) L440	1.000 EA
708520001C	BLOWER WHEEL	1.000 EA
708528008A	SCROLL WELDMENT	1.000 EA
000640000P	TAG WINDING THERMOST	1.000 EA

004824007K	SPECIAL PAINT	0.300 EA
034180056LA	KEY 1X1X7 L	1.000 EA
036000025NF	SCREW, HEX M16 BRASS	2.000 EA
417744143G	PACKAGING (PHANTOM)	1.000 EA
418018071	LABEL LABE	1.000 EA

1

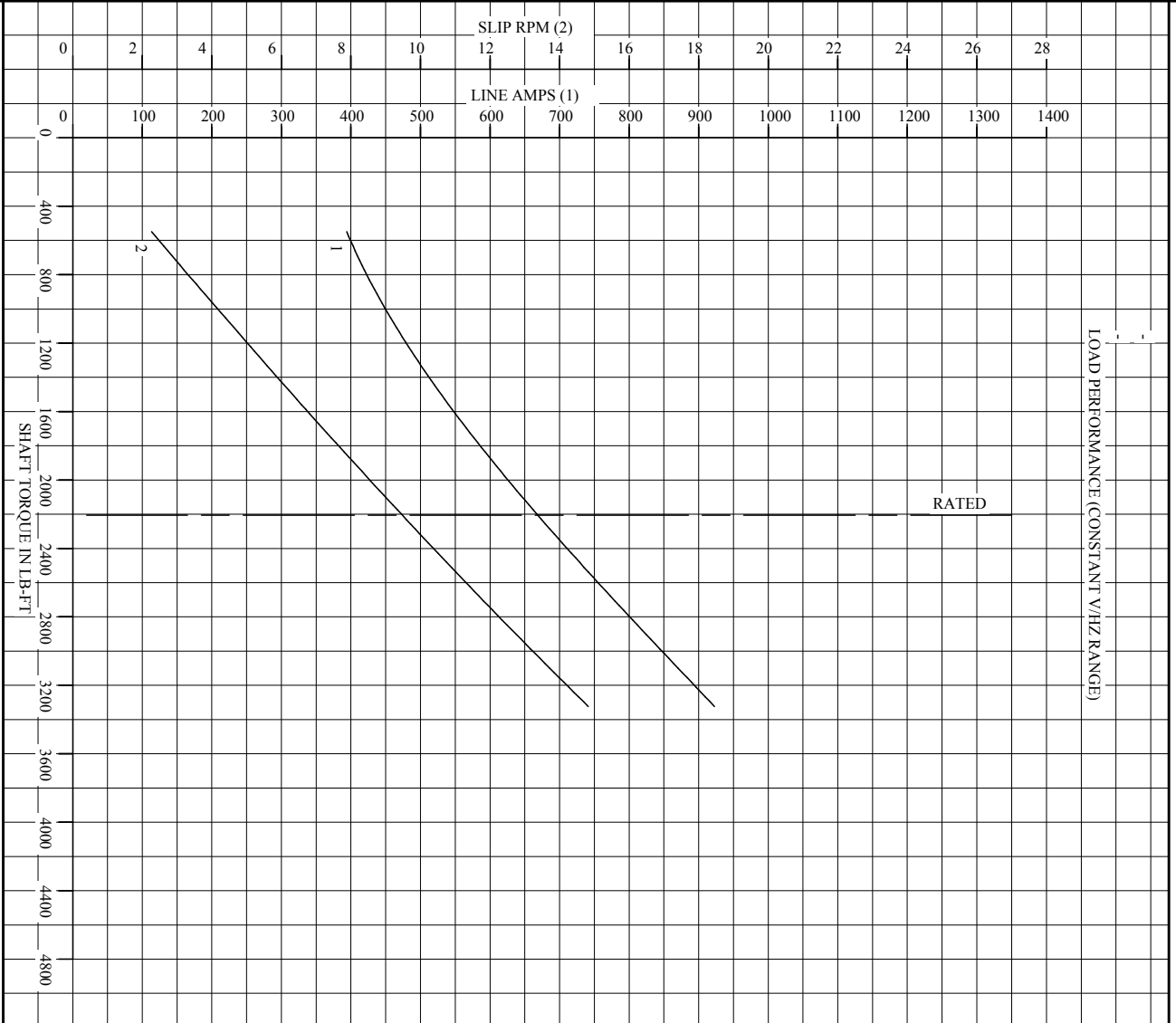


BALDOR
A MEMBER OF THE ABB GROUP

DR. BY B. GRANT
 CK. BY B. GRANT
 APP. BY T. EVON
 DATE 2-23-01

A-C MOTOR PERFORMANCE CURVES
 L2046A
 SH 1 OF 2
 ISSUE DATE 2-23-01

REL. S. O.	-	VOLTS	460	ENCLOSURE	DPFV	WYE CONN EQ CKT OHMS PER PHASE (AT BASE RATING, 25 °C)
FRAME	14461	AMPS	669	MAX SAFE RPM	2700	R1 .00334
HP	500	DUTY	CONT	IM (AMPS)	368	X1 .0341
BASE SPEED	1190	S.F.	1.0	P.F. @NL/FL	.029/.746	R2 .00259
PHASE/HERTZ	3/60	AMB °C/INSUL	50/H	Wk ² (I _D -Fl ²)	207	X2 .0581
						X3 .717



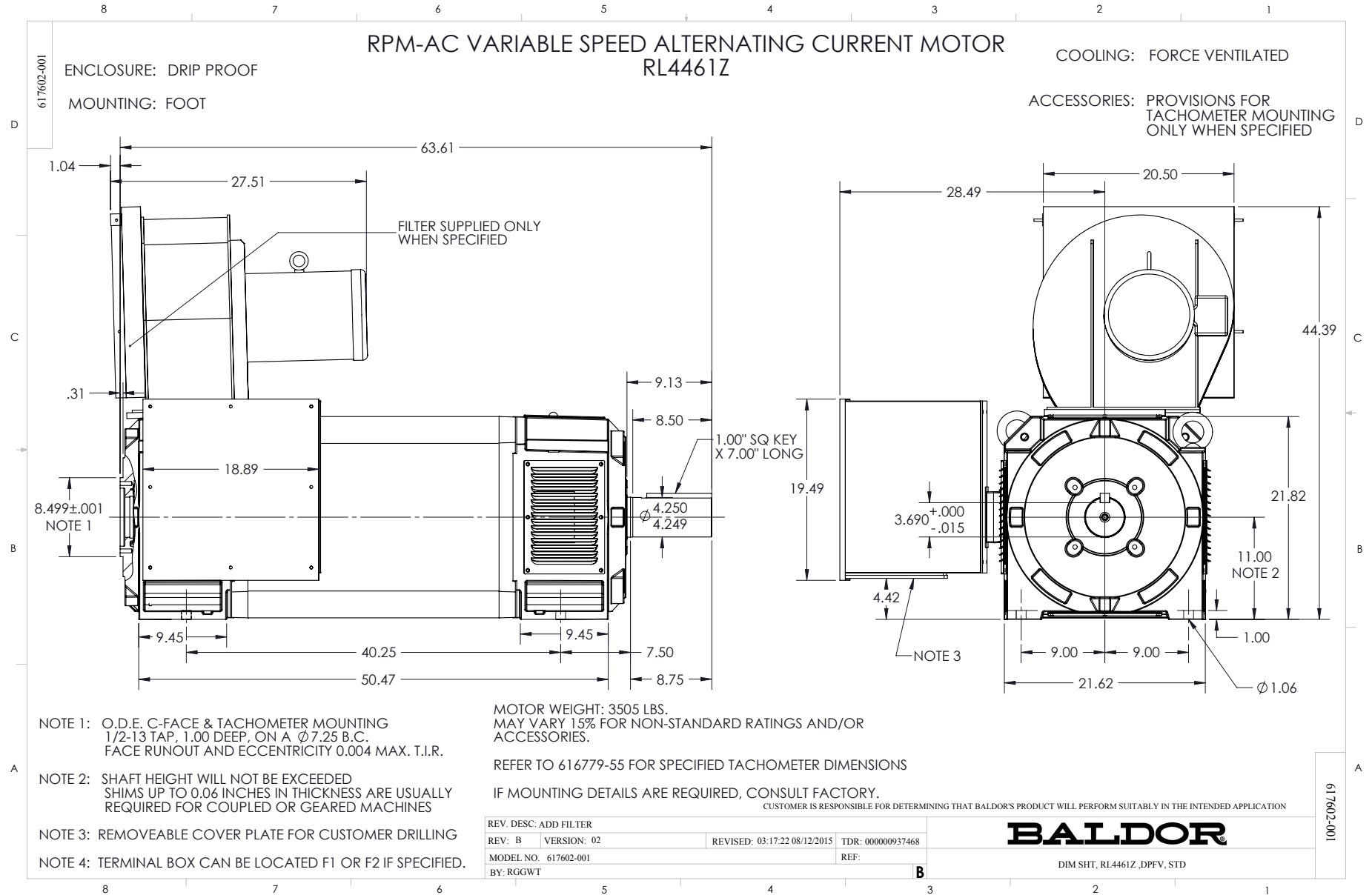
REMARKS: DATA VALID FOR NAMEPLATE SPEED RANGE ONLY

BALDOR
A MEMBER OF THE ABB GROUP

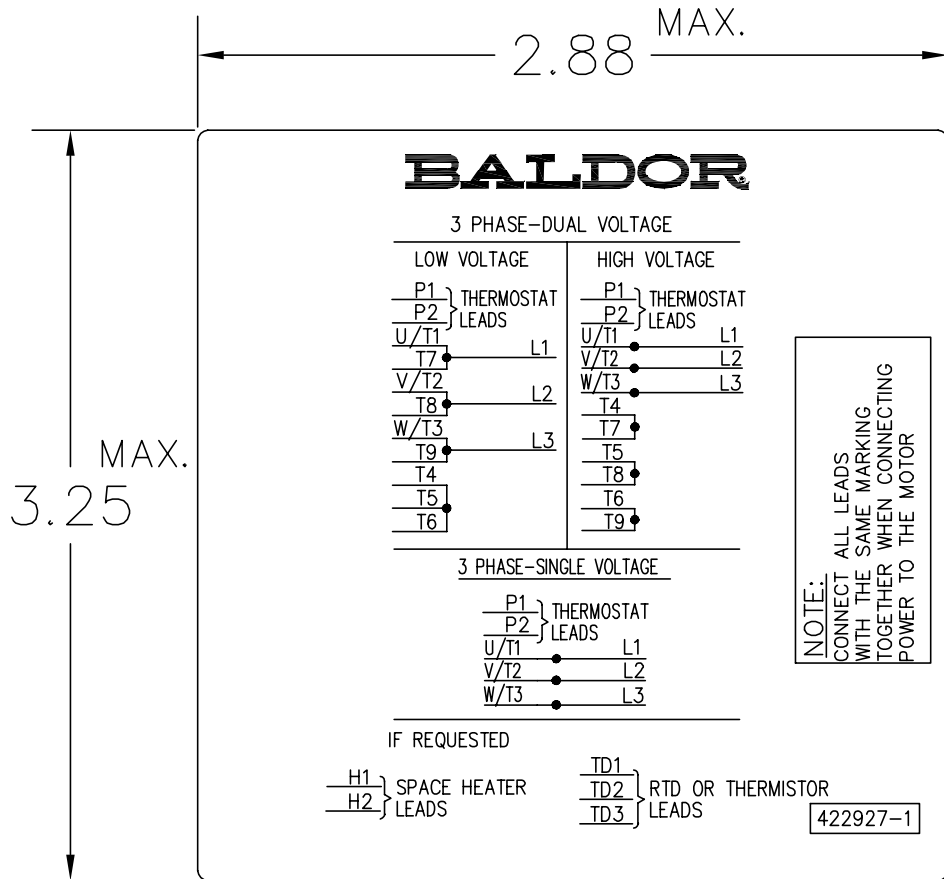
DR. BY B. GRANT
CK. BY B. GRANT
APP. BY T. EVON
DATE 2-23-01

A-C MOTOR PERFORMANCE CURVES

L2046A
SH 2 OF 2
ISSUE DATE 2-23-01



422927-001



NOTE:
DATA TO BE SIZED
SO THAT IT FITS INTO
MATERIAL DECAL
DIMENSIONS. MAKE
LETTERS & NUMBERS
AS LARGE AS POSSIBLE.

MATERIAL: CERAMATIC DGF-P4
PERMA GRIP ADHESIVE

ALL LETTERS, NUMBERS
AND LINES TO BE BLACK
ON WHITE BACKGROUND.

422927-001

REV. DESC: CHANGE BACKGROUND COLOR FROM GOLD TO WHITE			
REV. LTR: B	VERSION: 02	TDR: 00000788708	
FILE: \RGG\00000\203		REVISED: 08:09:29 03/04/2013	
MTL: -		BY: RGGWT	

BALDOR

EXTERNAL CONNECTION LABEL

SH 1 of 1

Marketing maintained PDF of MN406:

<http://www.baldor.com/support/Literature/Load.ashx/MN406?ManNumber=MN406>