

# **BALDOR**® • ***RELIANCE***

## **Product Information Packet**

# **M1704T**

**1/5HP, 1715/865RPM, 3PH, 60HZ, 143T, 3530M, T**

Part Detail							
Revision:	H	Status:	PRD/A	Change #:		Proprietary:	No
Type:	AC	Prod. Type:	3530M	Elec. Spec:	35WGP576	CD Diagram:	CD0011
Enclosure:	TEFC	Mfg Plant:		Mech. Spec:	35AA001	Layout:	35LYAA001
Frame:	143T	Mounting:	F1	Poles:	04/08	Created Date:	12-21-2009
Base:	RG	Rotation:	R	Insulation:	F	Eff. Date:	09-27-2016
Leads:	6#18					Replaced By:	
Literature:		Elec. Diagram:					

Nameplate NP1256L										
CAT.NO.	M1704T									
SPEC.	35AA001P576									
HP	1/5									
VOLTS	460									
AMP	1.4/1.55									
RPM	1715/865									
FRAME	143T				HZ	60			PH	3
SER.F.	1.15		CODE	J	DES	-		CLASS	F	
NEMA-NOM-EFF			PF							
RATING	40C AMB-CONT									
CC									USABLE AT 208V	
DE	6205				ODE	6203				
ENCL	TEFC		SN							

Parts List		
Part Number	Description	Quantity
SA188975	SA 35AA001P576	1.000 EA
RA176695	RA 35AA001P576	1.000 EA
35FN3002A05	EXFN, PLASTIC, 6.376 OD, .638 ID	1.000 EA
NS2512A01	INSULATOR, CONDUIT BOX X	1.000 EA
35CB3009	35 CB W/1.09 DIA. LEAD HOLE @ 6:	1.000 EA
36GS1000	GASKET-CONDUIT BOX, .06 THICK #SV-330 LE	1.000 EA
51XB1016A07	10-16 X 7/16 HXWSSLD SERTYB	2.000 EA
11XW1032G06	10-32 X .38, TAPTITE II, HEX WSHR SLTD U	1.000 EA
35FE3100M01	FREP TEFC ASSEMBLY FOR ROUTING	1.000 EA
HW4500A01	1641B(ALEMITE)400 UNIV, GREASE FITT	1.000 EA
HW5100A03SP	WAVY WASHER (W1543-017)	1.000 EA
35PE3101A01	PUEP ASSEMBLY FOR ROUTING	1.000 EA
HW4500A01	1641B(ALEMITE)400 UNIV, GREASE FITT	1.000 EA
XY1032A02	10-32 HEX NUT DIRECTIONAL SERRATION	4.000 EA
51XB1214A16	12-14X1.00 HXWSSLD SERTYB	1.000 EA
35FH4005A84SP	IEC FH W/GRSR, NO DIMPLES PRIMED	1.000 EA
51XW1032A06	10-32 X .38, TAPTITE II, HEX WSHR SLTD S	3.000 EA
35CB4521GX	CONDUIT BOX LID KIT	1.000 EA
51XW0832A07	8-32 X .44, TAPTITE II, HEX WSHR SLTD SE	4.000 EA
HW2501D13	KEY, 3/16 SQ X 1.375	1.000 EA
HA7000A01	KEY RETAINER 7/8" DIA SHAFT	1.000 EA
85XU0407S04	4X1/4 U DRIVE PIN STAINLESS	2.000 EA
MJ1000A02	GREASE, POLYREX EM EXXON (USe 4824-15A)	0.050 LB
HA3100A22	THRUBOLT 10-32 X 10.125	4.000 EA

<b>Parts List (continued)</b>		
<b>Part Number</b>	<b>Description</b>	<b>Quantity</b>
MG1000G27	MED CHARCOAL METALLIC GREY 400-0096	0.017 GA
LB1119N	WARNING LABEL	1.000 EA
LC0032	CONNECTION LABEL	1.000 EA
NP1256L	ALUM UL CSA CC	1.000 EA
36PA1000	PKG GRP, PRINT PK1016A06	1.000 EA
MN416A01	TAG-INSTAL-MAINT no wire (1200/bx) 11/14	1.000 EA

<b>Accessories</b>		
<b>Part Number</b>	<b>Description</b>	<b>Multiplier</b>
35-8762	C FACE KIT	A8
35EP1506A01SP	D-FLANGE KIT	A8

**AC Induction Motor Performance Data**

Record # 43987 - Typical performance - not guaranteed values

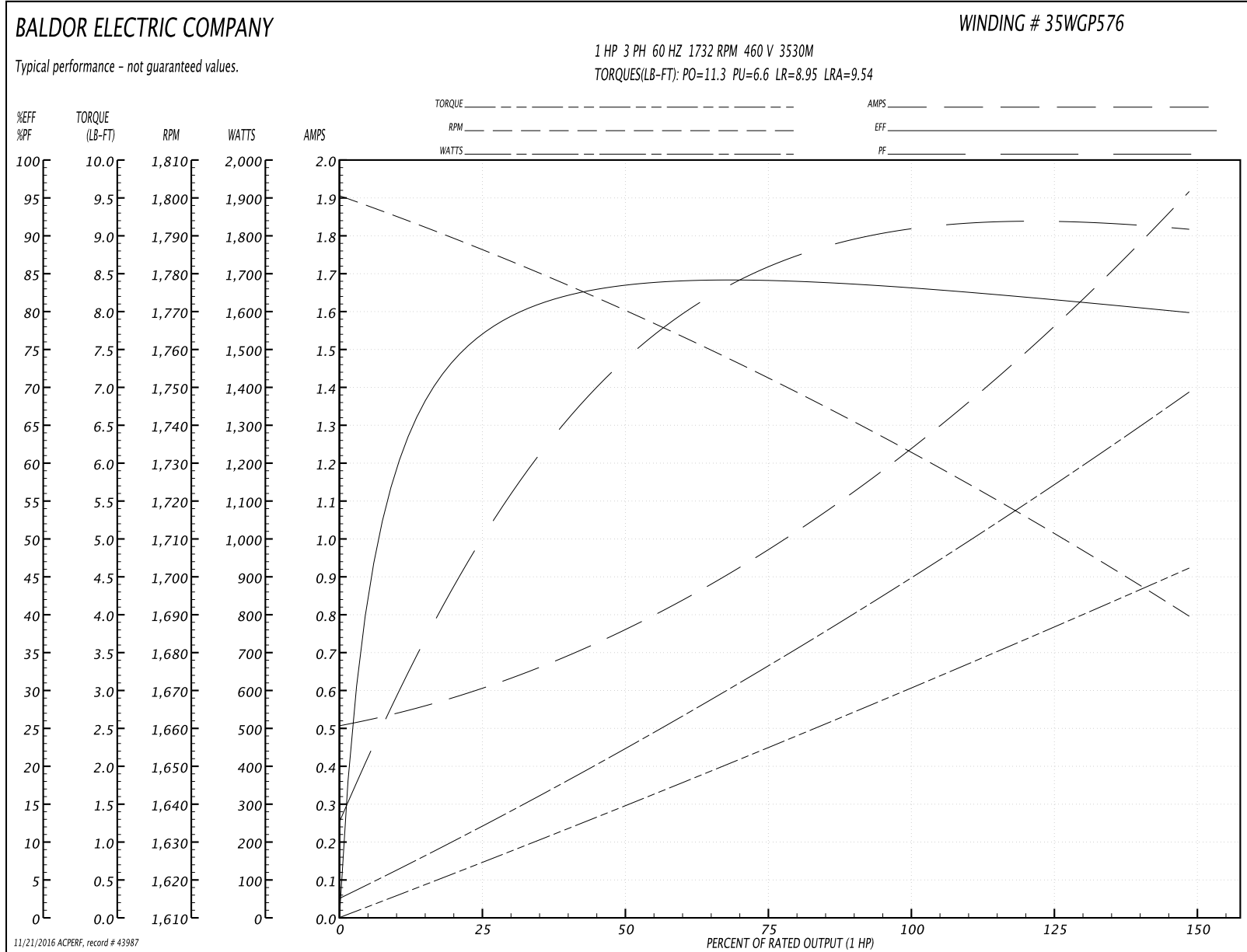
<b>Winding:</b> 35WGP576-R001	<b>Type:</b> 3530M	<b>Enclosure:</b> TEFC
-------------------------------	--------------------	------------------------

Nameplate Data				460 V, 60 Hz: Single Voltage Motor	
Rated Output (HP)	1/5			Full Load Torque	3.09 LB-FT
Volts	460			Start Configuration	direct on line
Full Load Amps	1.4/1.55			Breakdown Torque	11.3 LB-FT
R.P.M.	1715/865			Pull-up Torque	6.6 LB-FT
Hz	60	Phase	3	Locked-rotor Torque	8.95 LB-FT
NEMA Design Code	-	KVA Code	J	Starting Current	9.54 A
Service Factor (S.F.)	1.15			No-load Current	0.518 A
NEMA Nom. Eff.	0	Power Factor	0	Line-line Res. @ 25°C	22.6 Ω
Rating - Duty	40C AMB-CONT			Temp. Rise @ Rated Load	24°C
S.F. Amps				Temp. Rise @ S.F. Load	29°C
				Rotor inertia	0.178 LB-FT <sup>2</sup>

Load Characteristics 460 V, 60 Hz, 1 HP

% of Rated Load	25	50	75	100	125	150	S.F.
Power Factor	53	77	87	90	91	92	91
Efficiency	79.3	82.9	83.4	83.4	82.2	79.5	82.7
Speed	1785	1768	1750	1732	1711	1689	1719
Line amperes	0.6	0.77	1.01	1.27	1.58	1.91	1.46

Performance Graph at 460V, 60Hz, 1.0HP Typical performance - Not guaranteed values



**AC Induction Motor Performance Data**

Record # 43988 - Typical performance - not guaranteed values

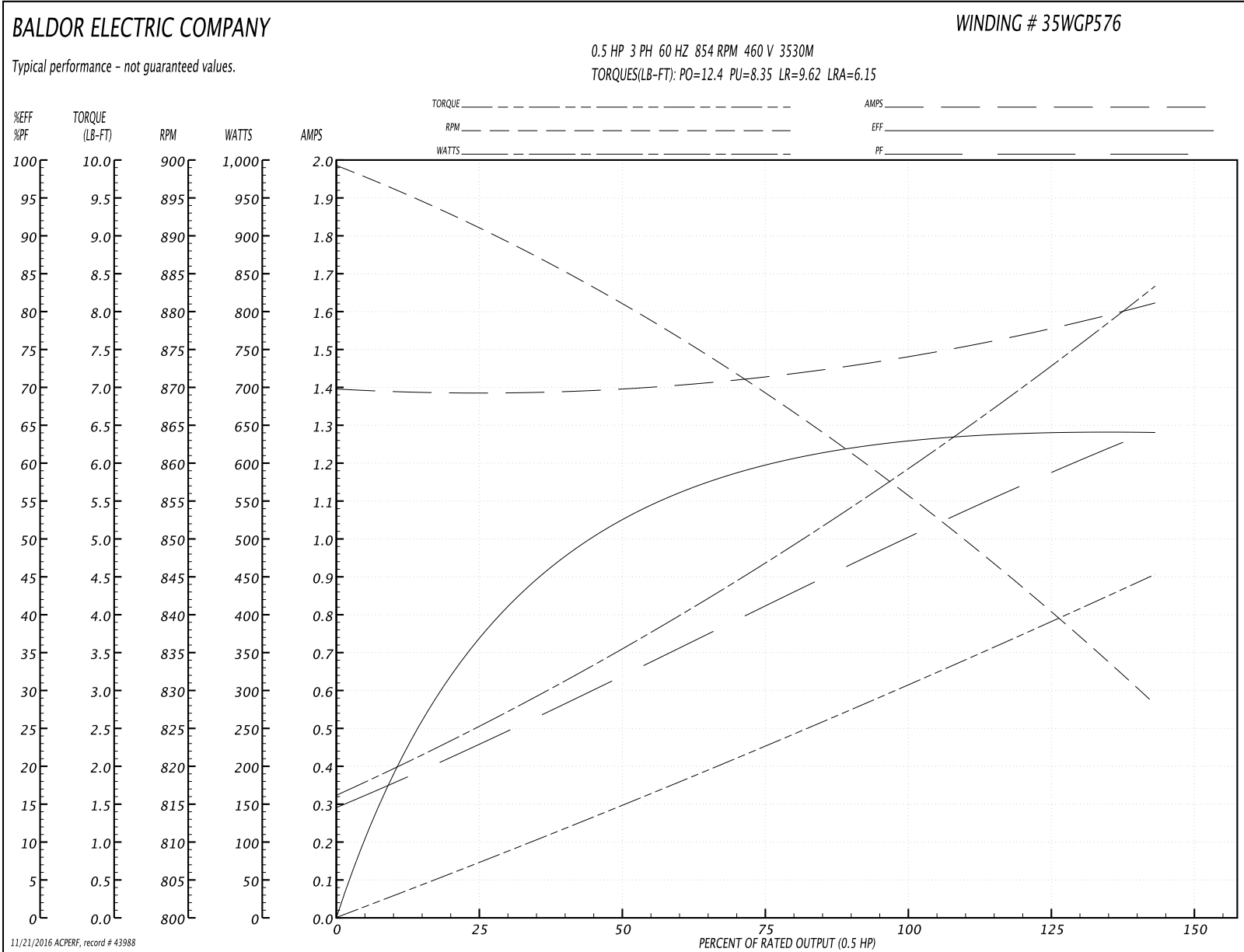
<b>Winding:</b> 35WGP576-R001	<b>Type:</b> 3530M	<b>Enclosure:</b> TEFC
-------------------------------	--------------------	------------------------

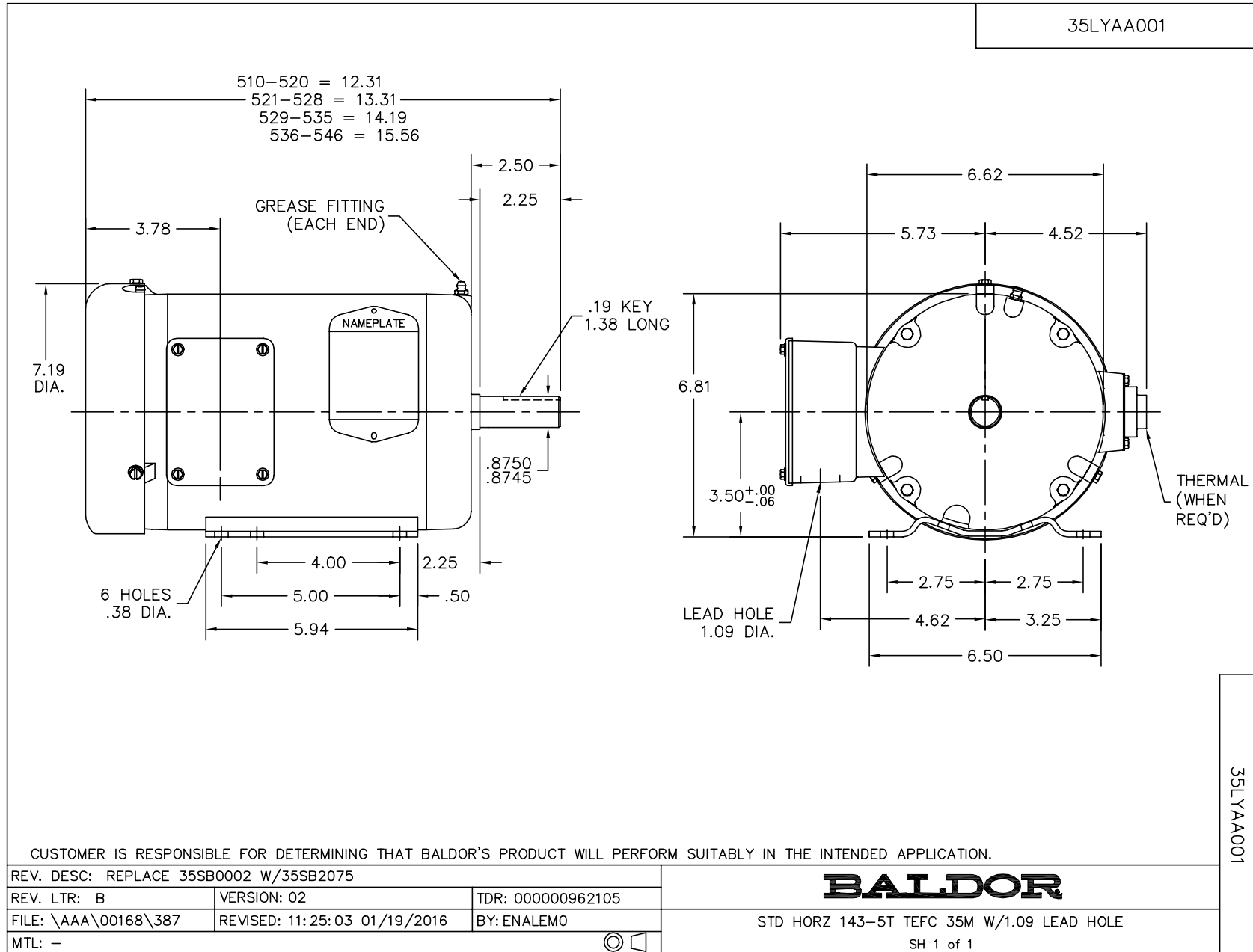
Nameplate Data				460 V, 60 Hz: Single Voltage Motor	
Rated Output (HP)	1/5			Full Load Torque	3.17 LB-FT
Volts	460			Start Configuration	direct on line
Full Load Amps	1.4/1.55			Breakdown Torque	12.4 LB-FT
R.P.M.	1715/865			Pull-up Torque	8.35 LB-FT
Hz	60	Phase	3	Locked-rotor Torque	9.62 LB-FT
NEMA Design Code	-	KVA Code	J	Starting Current	6.15 A
Service Factor (S.F.)	1.15			No-load Current	1.39 A
NEMA Nom. Eff.	0	Power Factor	0	Line-line Res. @ 25°C	30.9 Ω
Rating - Duty	40C AMB-CONT			Temp. Rise @ Rated Load	31°C
S.F. Amps				Temp. Rise @ S.F. Load	33°C
				Rotor inertia	0.178 LB-FT <sup>2</sup>

Load Characteristics 460 V, 60 Hz, 0.5 HP

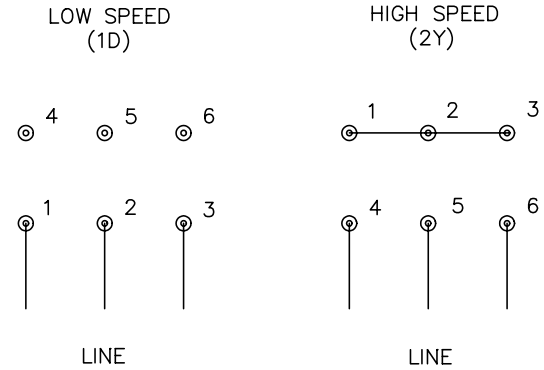
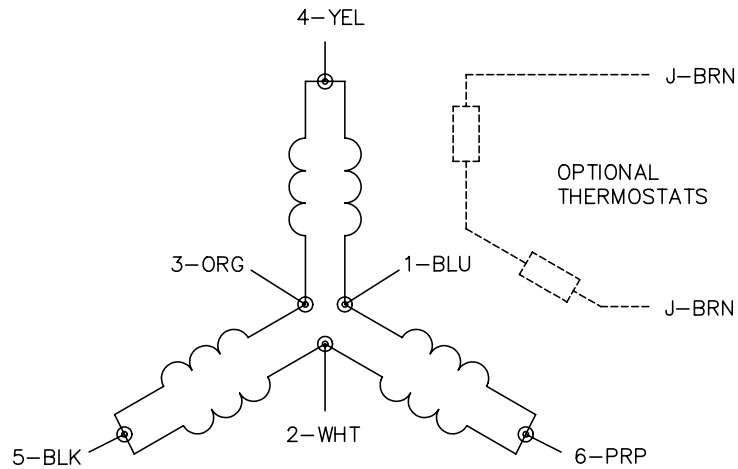
% of Rated Load	25	50	75	100	125	150	S.F.
Power Factor	24	33	43	51	58	65	55
Efficiency	38.2	54.1	59.6	64	64.6	63.6	64.4
Speed	891	879	867	854	841	828	846
Line amperes	1.39	1.41	1.43	1.48	1.55	1.63	1.52

Performance Graph at 460V, 60Hz, 0.5HP Typical performance - Not guaranteed values





CD0011



- NOTES:
1. INTERCHANGE ANY TWO LINE LEADS TO REVERSE ROTATION.
  2. OPTIONAL THERMOSTATS ARE PROVIDED WHEN SPECIFIED.
  3. ACTUAL NUMBER OF INTERNAL PARALLEL CIRCUITS MAY BE A MULTIPLE OF THOSE SHOWN ABOVE.
  4. LEAD COLORS ARE OPTIONAL. LEADS MUST ALWAYS BE NUMBERED AS SHOWN.

REV. DESC: REVISE TO SHOW OPTIONAL COLORS			
REV. LTR: F	BY: JLP	REVISED: 01/21/99 5:04	TDR: 0171435
110000		FILE: DWG\142.wg	MDL: -
		MTL: -	

**BALDOR ELECTRIC Co.**

3PH, SV, 6 LEADS, 2-SPEED 1-WINDING CONSTANT TORQUE

CD0011