

BALDOR® • *RELIANCE*

Product Information Packet

UCME759

7.5-9.2 AIR OVERHP,3450RPM,3PH,60HZ,184T

Part Detail							
Revision:	F	Status:	PRD/A	Change #:		Proprietary:	No
Type:	AC	Prod. Type:	3640M	Elec. Spec:	36WGW514	CD Diagram:	CD0005
Enclosure:	TEAO	Mfg Plant:		Mech. Spec:	36Q213	Layout:	36LYQ213
Frame:	184TZ	Mounting:	F1	Poles:	02	Created Date:	03-06-2014
Base:	RG	Rotation:	R	Insulation:	F	Eff. Date:	08-23-2016
Leads:	9#16 SEE NOTES Y					Replaced By:	
Literature:		Elec. Diagram:					

Nameplate NP1279L										
CAT.NO.	UCME759									
SPEC.	36Q213W514G1									
HP	7.5-9.2 AIR OVER									
VOLTS	208-230/460									
AMP	18.8-17/8.5									
RPM	3450									
FRAME	184TZ			HZ	60			PH	3	
SER.F.	1.00			CODE	M		DES	B	CL	F
NEMA-NOM-EFF	89.5			PF	90					
RATING	40C AMB-CONT									
CC							USABLE AT 208V	18.8		
DE	6206			ODE	6205					
ENCL	TEAO			SN						

Nameplate NP1263L											
CAT.NO.	UCME759										
SPEC.	36Q213W514G1										
HP	7.5-9.2 AIR OVER										
VOLTS	208-230/460										
AMP	18.8-17/8.5										
RPM	3450										
FRAME	184TZ				HZ	60			PH	3	
SER.F.	1.00			CODE	M		DES	B		CL	F
NEMA-NOM-EFF	89.5			PF	90						
RATING	40C AMB-CONT										
CC								USABLE AT 208V	18.8		
DE	6206			ODE	6205						
ENCL	TEAO			SN							

Parts List		
Part Number	Description	Quantity
SA277501	SA 36Q213W514G1	1.000 EA
RA264050	RA 36Q213W514G1	1.000 EA
HA6021A01SP	ADAPTOR, MACH	1.000 EA
36GS5000	GASKET CONDUIT ADAPTOR	1.000 EA
51XB1016A07	10-16 X 7/16 HXWSSLD SERTYB	2.000 EA
11XT0832G06	8-32 X 3/8 TY 23 TAPPING	1.000 EA
36EP3104A46	FREP TENV 36L/M 205 BRG NO GRSR, W/GND	1.000 EA
HW5100A05	WVY WSHR F/205 & 304 BRGS	1.000 EA
36PE3100B94	PUEP ASSEMBLY FOR ROUTING PURPOSES	1.000 EA
HW4600B50SP	SEAL 1.156 X 1.874 X 0.250 SINGLE LIP DB	1.000 EA
10XN2520A20	1/4-20X 1 1/4 HEX HD X	2.000 EA
XY2520A12	1/4-20 HEX NUT, DIRECTIONAL SERRATIONS	4.000 EA
HW4600B36SP	V-RING SLINGER 1.188 X 1.690 X .24 VITON	1.000 EA
HW2501E18	KEY, 1/4 SQ X 2.000	1.000 EA
HA7000A02	KEY RETAINER RING, 1 1/8 DIA, 1 3/8 DIA	1.000 EA
85XU0407S04	4X1/4 U DRIVE PIN STAINLESS	2.000 EA
MJ5001A27	32220KN GRAY SEALER *MIN BUY 4 QTS=1GAL	0.010 QT
HW3200A01	3/8-16X3/4 I-BLT WELDED F/S	1.000 EA
MJ1000A02	GREASE, POLYREX EM EXXON (USe 4824-15A)	0.050 LB
MG1025C02	WILKOFASST SG, 787.105, TAN	0.022 GA
LB1115N	LABEL,LIFTING DEVICE (ON ROLLS)	1.000 EA
LD5000A22	LEAD ASSY, ML1400DF14 W/#10 RING TERM	1.000 EA
HA3101A28	THRUBOLT 1/4-20 X 12.500 OHIO ROD	4.000 EA
LB1119N	WARNING LABEL	1.000 EA

Parts List (continued)		
Part Number	Description	Quantity
LC0145B01	CONNECTION LABEL	1.000 EA
NP1279L	ALUM FARM DUTY UL CSA CC	1.000 EA
NP1263L	AUX, GP, ALUM, CC, LASER ETCHED	1.000 EA
36PA1000	PKG GRP, PRINT PK1016A06	1.000 EA
MN416A01	TAG-INSTAL-MAINT no wire (1200/bx) 11/14	1.000 EA

Accessories		
Part Number	Description	Multiplier
36-3301	C FACE KIT	A8
36EP1304A62SP	FLANGE MTD ENDPLATE 182-4TD -ENCL (LESS	A8

AC Induction Motor Performance Data

Record # 10786 - Typical performance - not guaranteed values

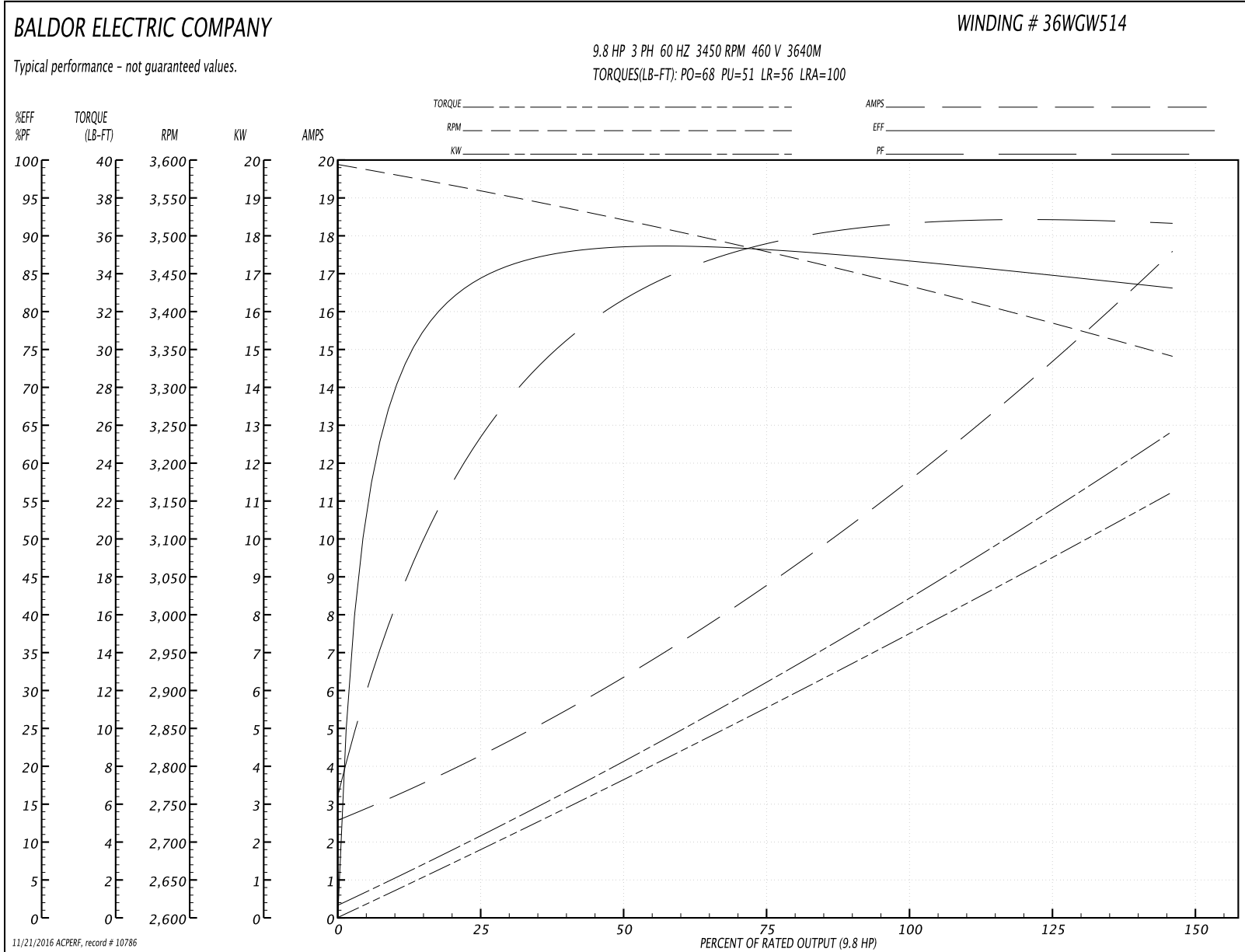
Winding: 36WGW514-R001	Type: 3640M	Enclosure: OPEN
-------------------------------	--------------------	------------------------

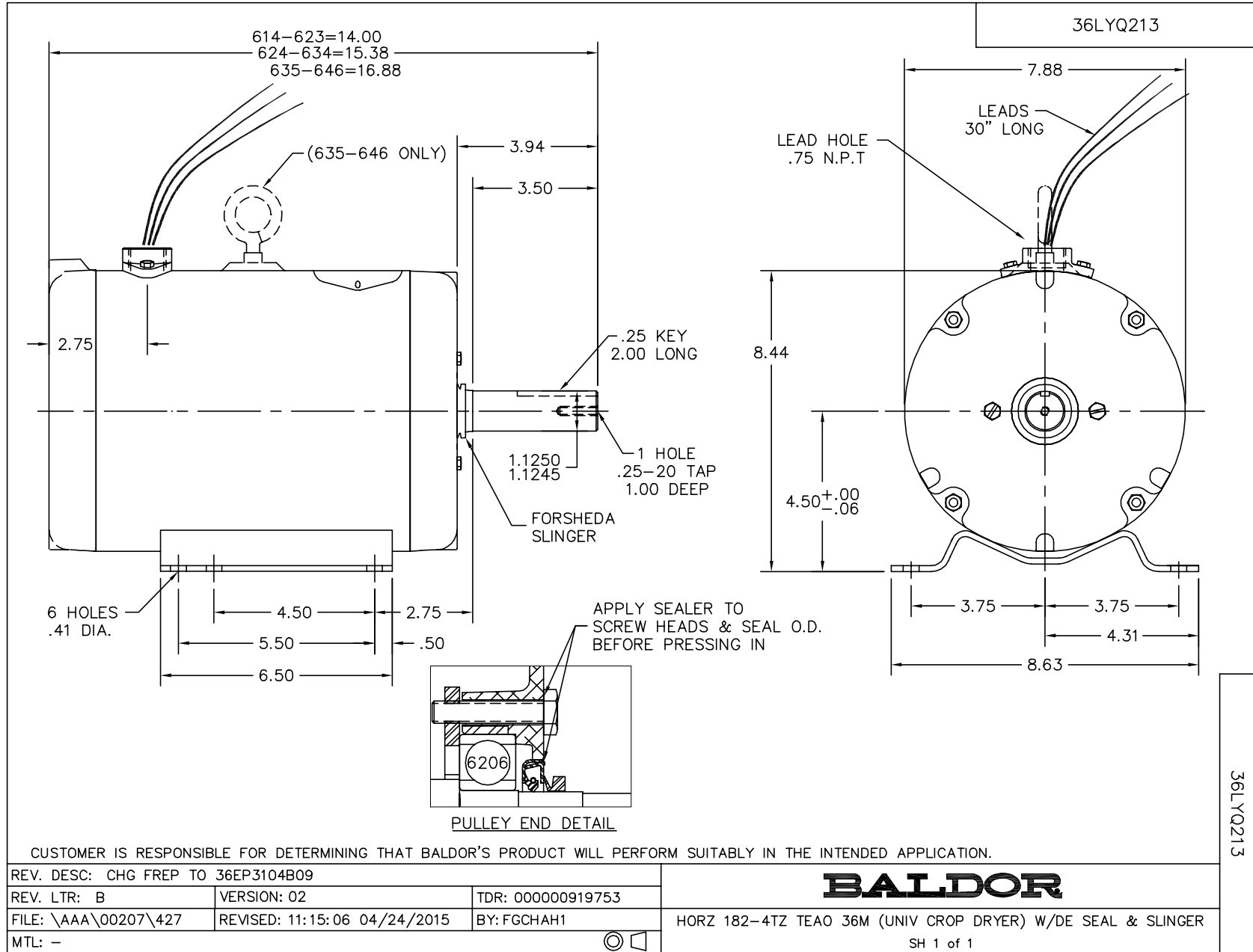
Nameplate Data				460 V, 60 Hz: High Voltage Connection	
Rated Output (HP)	7.5-9.2 AIR OVER			Full Load Torque	15 LB-FT
Volts	208-230/460			Start Configuration	direct on line
Full Load Amps	18.8-17/8.5			Breakdown Torque	68 LB-FT
R.P.M.	3450			Pull-up Torque	51 LB-FT
Hz	60	Phase	3	Locked-rotor Torque	56 LB-FT
NEMA Design Code	B	KVA Code	M	Starting Current	100 A
Service Factor (S.F.)	1			No-load Current	2.7 A
NEMA Nom. Eff.	89.5	Power Factor	90	Line-line Res. @ 25°C	1.32 Ω
Rating - Duty	40C AMB-CONT			Temp. Rise @ Rated Load	72°C

Load Characteristics 460 V, 60 Hz, 9.8 HP

% of Rated Load	25	50	75	100	125	150
Power Factor	76	89	93	95	95	94
Efficiency	85	88	88	87	85	83
Speed	3557	3518	3478	3434	3389	3340
Line amperes	4.1	6.5	9	11.6	14.4	17.6

Performance Graph at 460V, 60Hz, 9.8HP Typical performance - Not guaranteed values





CD0005

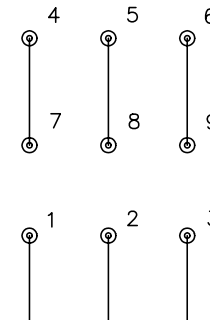


LOW VOLTAGE
(2Y)



LINE

HIGH VOLTAGE
(1Y)



LINE

NOTES:

1. INTERCHANGE ANY TWO LINE LEADS TO REVERSE ROTATION.
2. OPTIONAL THERMOSTATS ARE PROVIDED WHEN SPECIFIED.
3. ACTUAL NUMBER OF INTERNAL PARALLEL CIRCUITS MAY BE A MULTIPLE OF THOSE SHOWN ABOVE.
4. LEAD COLORS ARE OPTIONAL. LEADS MUST ALWAYS BE NUMBERED AS SHOWN.

REV. DESC: REVISE TO SHOW OPTIONAL COLORS			
REV. LTR: E	BY: JLP	REVISED: 01/19/99 10:15	TDR: 0171435
90000		FILE: AAA00005140	MDL: -
		MTL: -	

BALDOR ELECTRIC Co.

3PH, DV, 9 LEADS

CD0005