

# **BALDOR**® • ***RELIANCE***

## **Product Information Packet**

# **VSSEFWDM3538**

**.5HP, 1765RPM, 3PH, 60HZ, 56C, 3516M, TEFC, F1**

| Part Detail |      |                |       |             |          |               |            |
|-------------|------|----------------|-------|-------------|----------|---------------|------------|
| Revision:   | M    | Status:        | PRD/A | Change #:   |          | Proprietary:  | No         |
| Type:       | AC   | Prod. Type:    | 3516M | Elec. Spec: | 35WGP563 | CD Diagram:   | CD0005     |
| Enclosure:  | TEFC | Mfg Plant:     |       | Mech. Spec: | 35Z182   | Layout:       | 35LYZ182   |
| Frame:      | 56C  | Mounting:      | F1    | Poles:      | 04       | Created Date: | 04-19-2012 |
| Base:       | N    | Rotation:      | R     | Insulation: | H        | Eff. Date:    | 10-26-2016 |
| Leads:      | 9#18 |                |       |             |          | Replaced By:  |            |
| Literature: |      | Elec. Diagram: |       |             |          |               |            |

|                            |              |  |             |           |            |      |  |              |                       |   |
|----------------------------|--------------|--|-------------|-----------|------------|------|--|--------------|-----------------------|---|
| <b>Nameplate NP1953A01</b> |              |  |             |           |            |      |  |              |                       |   |
| <b>CAT.NO.</b>             | VSSEFWDM3538 |  |             |           |            |      |  |              |                       |   |
| <b>SPEC.</b>               | 35Z182P563G1 |  |             |           |            |      |  |              |                       |   |
| <b>HP</b>                  | .5           |  |             |           |            |      |  |              |                       |   |
| <b>VOLTS</b>               | 208-230/460  |  |             |           |            |      |  |              |                       |   |
| <b>AMP</b>                 | 1.8/.9       |  |             |           |            |      |  |              |                       |   |
| <b>RPM</b>                 | 1765         |  |             |           |            |      |  |              |                       |   |
| <b>FRAME</b>               | 56C          |  |             |           | <b>HZ</b>  | 60   |  |              | <b>PH</b>             | 3 |
| <b>SER.F.</b>              | 1.15         |  | <b>CODE</b> | N         | <b>DES</b> | B    |  | <b>CLASS</b> | H                     |   |
| <b>NEMA-NOM-EFF</b>        | 84           |  |             | <b>PF</b> | 64         |      |  |              |                       |   |
| <b>RATING</b>              | 40C AMB-CONT |  |             |           |            |      |  |              |                       |   |
| <b>CC</b>                  |              |  |             |           |            |      |  |              | <b>USABLE AT 208V</b> |   |
| <b>DE</b>                  | 6205         |  |             |           | <b>ODE</b> | 6205 |  |              |                       |   |
| <b>ENCL</b>                | TEFC         |  | <b>SN</b>   |           |            |      |  |              |                       |   |

| Parts List  |  |          |
|-------------|--|----------|
| Part Number | Description                              | Quantity |
| SA242925    | SA 35Z182P563G1                          | 1.000 EA |
| RA229826    | RA 35Z182P563G1                          | 1.000 EA |
| 11XW1032G06 | 10-32 X .38, TAPTITE II, HEX WSHR SLTD U | 1.000 EA |
| 35EP1917A09 | FREP TEFC 205 BRG NO GRS 4X.125 NPT (SS) | 1.000 EA |
| RM1070A25   | O-RING,VITON 6.19 ID X .062 C.S. NOM     | 1.000 EA |
| HW4600E99   | AXIAL FACE SEAL 76925-9042-0447 SS CASE  | 1.000 EA |
| HW4500A33   | 1/8 NPT STAINLESS,HOLO-KROME #13002,PRES | 3.000 EA |
| HW5100A05   | WVY WSHR F/205 & 304 BRGS                | 1.000 EA |
| 35PE1916A05 | PUEP 56C ENC 205 BRG 4X.125 NPT (SS)     | 1.000 EA |
| RM1070A25   | O-RING,VITON 6.19 ID X .062 C.S. NOM     | 1.000 EA |
| HW4600E99   | AXIAL FACE SEAL 76925-9042-0447 SS CASE  | 1.000 EA |
| HW4500A33   | 1/8 NPT STAINLESS,HOLO-KROME #13002,PRES | 3.000 EA |
| RM1070A26   | O-RING,4.5MM I.D.X1.5MM C.S. (VITON)     | 4.000 EA |
| 51XB1214A16 | 12-14X1.00 HXWSSLD SERTYB                | 1.000 EA |
| 35FH4005A39 | IEC FH NO GREASER (#304 SS)CLEAN ONLY    | 1.000 EA |
| 10XN1032S06 | HEX HD CAP SCREW, SS                     | 3.000 EA |
| 36GS3008SP  | WHITE NEOPREME KO BOX LID GASKET         | 1.000 EA |
| 35CB4515    | 35 CB LID #304 STAINLESS STEEL           | 1.000 EA |
| 59XN0832S07 | 8/32 X 7/16 HX WS HD SER X               | 4.000 EA |
| HW2502D13   | SS KEY, 3/16 SQ X 1.375                  | 1.000 EA |
| HA7000A04   | KEY RETAINER 0.625 DIA SHAFTS            | 1.000 EA |
| MJ5001A27   | 32220KN GRAY SEALER *MIN BUY 4 QTS=1GAL  | 0.005 QT |
| MJ5004A37   | #76732 LOCTITE ANTISEIZE THRD COMPOUND   | 0.005 EA |
| HA5027A02   | HA4054 T-DRAIN X2 BAGGED WITH LABEL      | 1.000 EA |

| <b>Parts List (continued)</b> |  |                 |
|-------------------------------|--|-----------------|
| <b>Part Number</b>            | <b>Description</b>                       | <b>Quantity</b> |
| MJ1000A02                     | GREASE, POLYREX EM EXXON (USe 4824-15A)  | 0.050 LB        |
| 35FN3002A05                   | EXFN, PLASTIC, 6.376 OD, .638 ID         | 1.000 EA        |
| WD5603A01                     | KIT, CLOSED-END LEAD SPLICE (18-14GA)    | 1.000 EA        |
| HA3100S01                     | THRUBOLT- 10-32 X 8.187 302 OR 303 SS    | 4.000 EA        |
| 36PA1000                      | PKG GRP, PRINT PK1016A06                 | 1.000 EA        |
| PK3082                        | STYROFOAM CRADLE                         | 1.000 EA        |
| MN416A01                      | TAG-INSTAL-MAINT no wire (1200/bx) 11/14 | 1.000 EA        |
| HA5027A07                     | 85XU1208S08 FACE DRAIN PINS BAGGED       | 1.000 EA        |

**AC Induction Motor Performance Data**

Record # 35643 - Typical performance - not guaranteed values

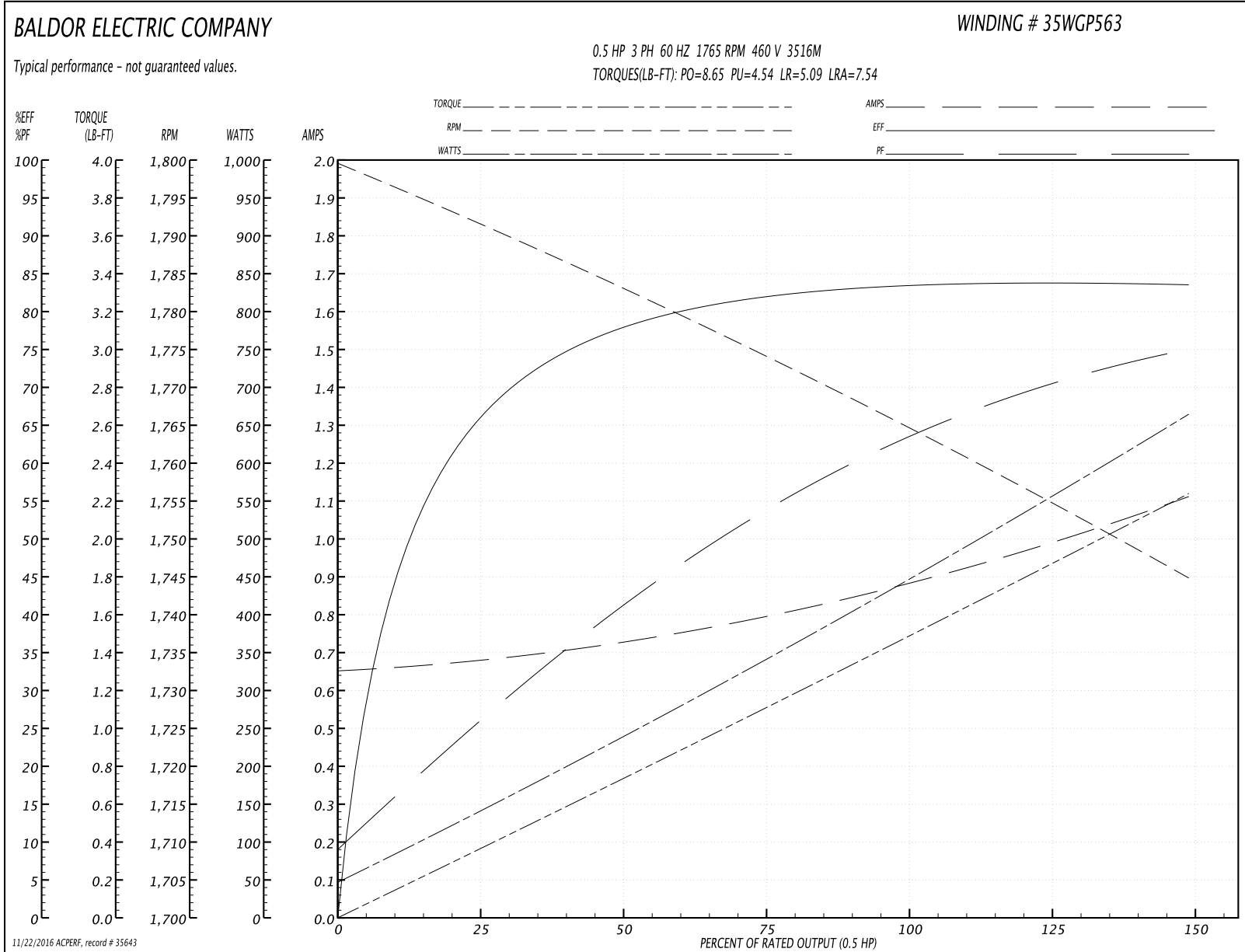
|                               |                    |                        |
|-------------------------------|--------------------|------------------------|
| <b>Winding:</b> 35WGP563-R007 | <b>Type:</b> 3516M | <b>Enclosure:</b> TEFC |
|-------------------------------|--------------------|------------------------|

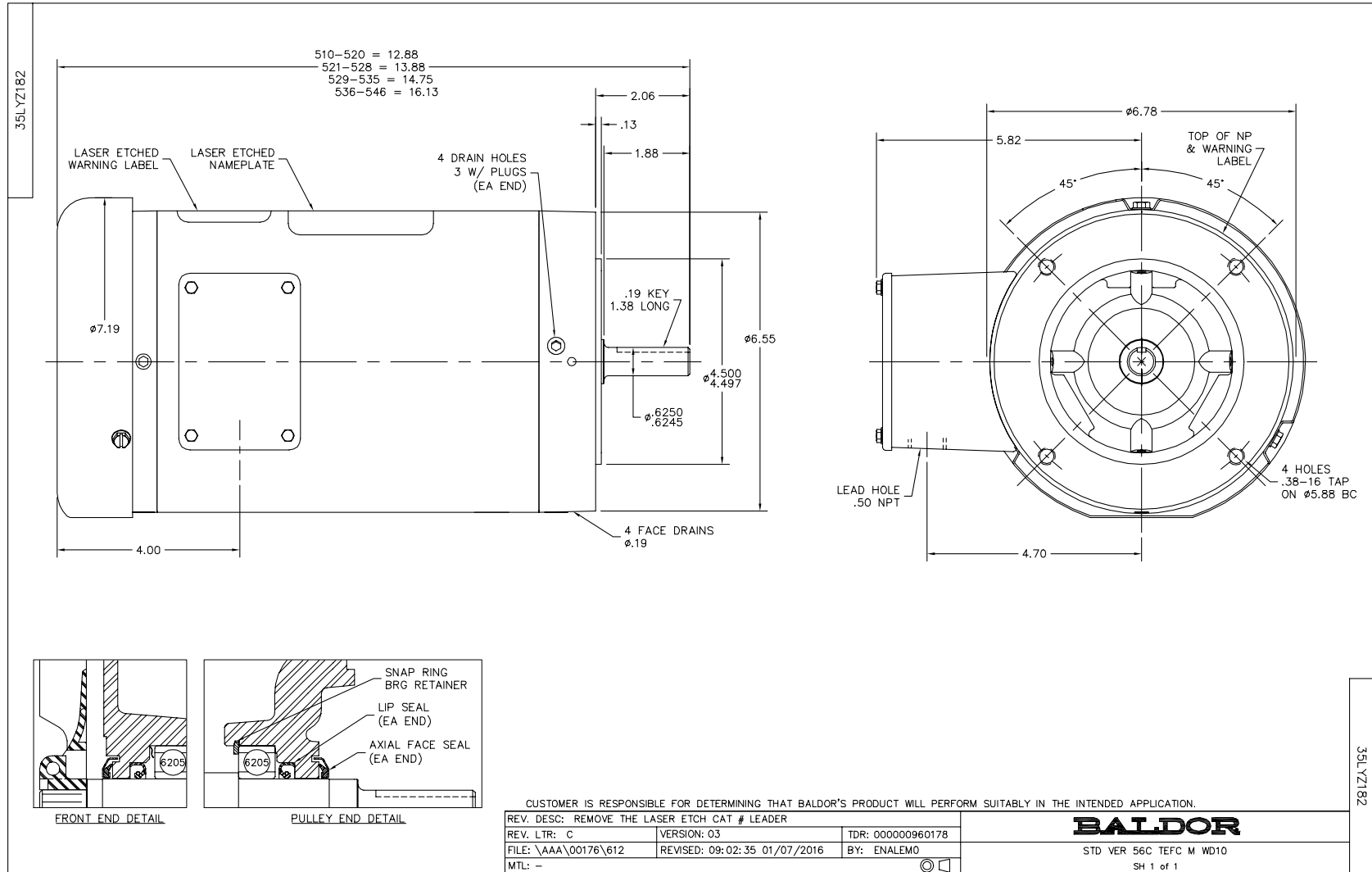
| Nameplate Data        |              |              |    | 460 V, 60 Hz:<br>High Voltage Connection |                |
|-----------------------|--------------|--------------|----|--|----------------|
| Rated Output (HP)     | .5           |              |    | Full Load Torque                         | 1.49 LB-FT     |
| Volts                 | 208-230/460  |              |    | Start Configuration                      | direct on line |
| Full Load Amps        | 1.8/.9       |              |    | Breakdown Torque                         | 8.65 LB-FT     |
| R.P.M.                | 1765         |              |    | Pull-up Torque                           | 4.54 LB-FT     |
| Hz                    | 60           | Phase        | 3  | Locked-rotor Torque                      | 5.09 LB-FT     |
| NEMA Design Code      | B            | KVA Code     | N  | Starting Current                         | 7.54 A         |
| Service Factor (S.F.) | 1.15         |              |    | No-load Current                          | 0.655 A        |
| NEMA Nom. Eff.        | 84           | Power Factor | 64 | Line-line Res. @ 25°C                    | 25.6 Ω         |
| Rating - Duty         | 40C AMB-CONT |              |    | Temp. Rise @ Rated Load                  | 54°C           |
| S.F. Amps             |              |              |    | Temp. Rise @ S.F. Load                   | 65°C           |

Load Characteristics 460 V, 60 Hz, 0.5 HP

| % of Rated Load | 25    | 50    | 75    | 100   | 125   | 150  | S.F.  |
|-----------------|-------|-------|-------|-------|-------|------|-------|
| Power Factor    | 26    | 41    | 53    | 63    | 70    | 75   | 67    |
| Efficiency      | 65    | 77.6  | 81.5  | 83.8  | 84    | 83.4 | 83.9  |
| Speed           | 1793  | 1783  | 1774  | 1765  | 1755  | 1745 | 1759  |
| Line amperes    | 0.674 | 0.725 | 0.793 | 0.885 | 0.986 | 1.11 | 0.946 |

Performance Graph at 460V, 60Hz, 0.5HP Typical performance - Not guaranteed values





CD0005



LOW VOLTAGE  
(2Y)



LINE

HIGH VOLTAGE  
(1Y)



LINE

NOTES:

1. INTERCHANGE ANY TWO LINE LEADS TO REVERSE ROTATION.
2. OPTIONAL THERMOSTATS ARE PROVIDED WHEN SPECIFIED.
3. ACTUAL NUMBER OF INTERNAL PARALLEL CIRCUITS MAY BE A MULTIPLE OF THOSE SHOWN ABOVE.
4. LEAD COLORS ARE OPTIONAL. LEADS MUST ALWAYS BE NUMBERED AS SHOWN.

|   |         |                         |              |
|---|---------|-------------------------|--------------|
| REV. DESC: REVISE TO SHOW OPTIONAL COLORS |         |                         |              |
| REV. LTR: E                               | BY: JLP | REVISED: 01/19/99 10:15 | TDR: 0171435 |
| 90000                                     |         | FILE: AAA00005140       | MDL: -       |
|   |         | MTL: -                  |              |

**BALDOR ELECTRIC Co.**

3PH, DV, 9 LEADS

CD0005