



MARCH PUMPS

1819 PICKWICK AVE., GLENVIEW, IL 60026-1306, U.S.A

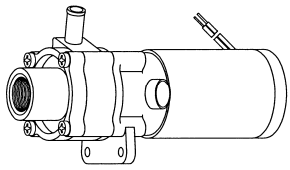
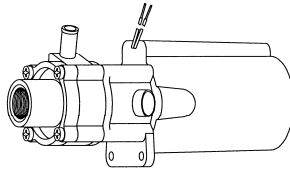
893 BRUSHLESS

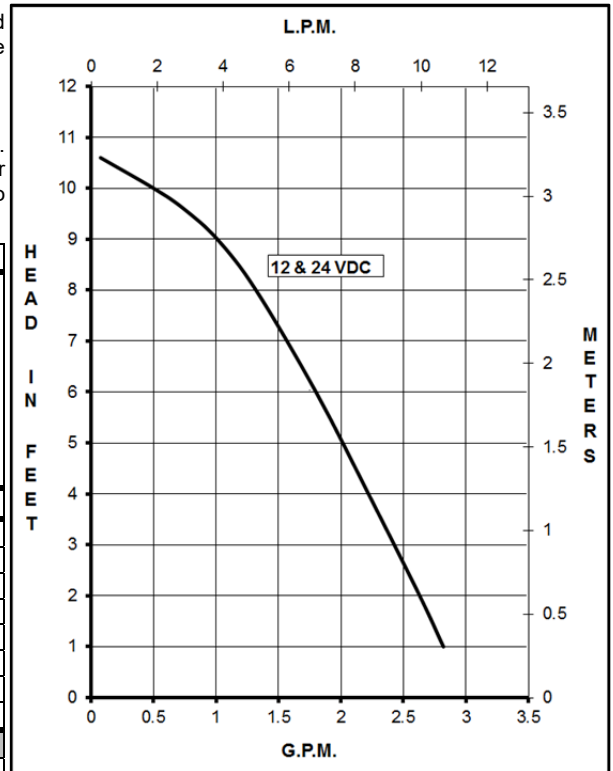
12 VDC Ametek Motor
893-07 & 893-09

DESCRIPTION: Series 893 are centrifugal magnetic drive pumps, eliminating the need for a shaft seal. Model 893-09 is restricted to submersible operation. Pumps are serviceable with a screwdriver. See the parts list for a breakdown of parts.

OPERATION:

Pumps are not self-priming, lack a suction lift, and thus require a **flooded suction**. Pumps **cannot be run dry** because the impeller requires the liquid being pumped for lubrication. Brushless motors must be operated within a restricted voltage range due to the electronics in the motor. For application assistance, contact March Pump.

MODELS & SPECIFICATIONS	893-07					893-09					
											
	Open Air					Submersible Only					
Product #	0893-0061-0100					0893-0061-0200					
Max Flow	2.7 gpm - 11 lpm					2.7 gpm - 11 lpm					
Max Head	10.6 ft / 4.5 psi - 3.3 m					10.6 ft / 4.5 psi - 3.3 m					
Inlet	3/8" FPT					3/8" FPT					
Outlet	3/8" OD					3/8" OD					
Max Internal Pressure	50 psi - 344 kPa					50 psi - 344 kPa					
Max Liquid Temperature	190 °F open air					120 °F sub					
	87 °C open air					49 °C sub					
Packed Weight	1.0 lbs / 0.45 kg					1.2 lbs / 0.54 kg					
ELECTRICAL	A	W	Hp	kW	Rpm	A	W	Hp	kW	Rpm	
Restricted Range 12 V	1.5	12	1/150	0.004	4000	1.5	12	1/150	0.004	4000	
Overall Size	Height	Width	Length				Height	Width	Length		
	2.96"	1.85"	5.21"	2.96"	3.00"	6.00"	2.96"	7.6 cm	15.2 cm		
	7.5 cm	4.6 cm	13.2 cm	7.5 cm	7.6 cm	15.2 cm					
Materials in Contact With Solution	Noryl, Nylon, Carbon/Teflon, Buna N, 316 Stainless Steel, Ceramic Magnet.					When pump is submerged the following additional materials are in contact: Epoxy, Delrin, & Motor Leads					



ELECTRICAL:

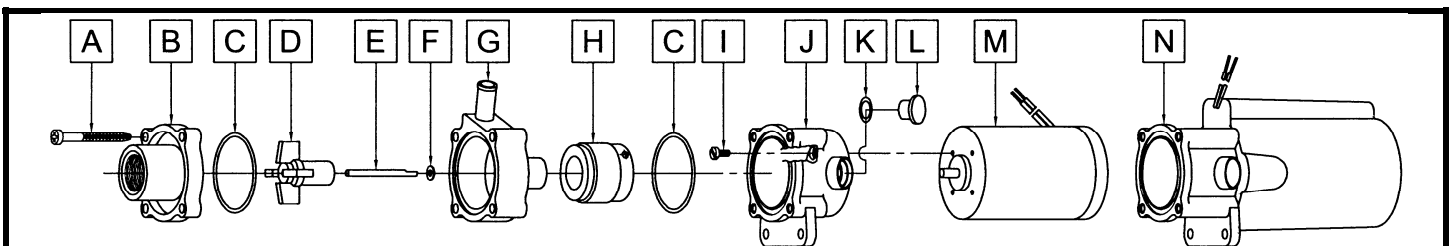
Motors are Brushless DC. 12 Volt Motor
Restricted Voltage Range (7V to 14V)
Red lead is positive, blue lead is negative

893-07 have 13" (33 cm) motor leads.
893-09 have 10" (25 cm) motor leads.

All specifications & data are based on pumping water & are intended as a guideline only. Specifications may vary with different motors.

LIMITED WARRANTY:

March pumps are guaranteed only against defects in workmanship or materials for a period of one year from date of manufacture pumping water.



#	DESCRIPTION	MATERIAL	SIZE (Inches)	QTY.	893-07	893-09
A	Screws, Self-Tapping	Stainless	#7-19 x 1-7/16 Lg.	4	0115-0062-1000	
B	Cover	Noryl	3/8 FPT Inlet	1	0893-0004-1000	
C	"O" Ring	Buna N	1/16 CS x 1-7/16 OD	2	0115-0018-1000	
D	Impeller	Nylon/Ceramic Magnet		1	0115-0008-0100	
E	Shaft	316 Stainless		1	0115-0032-1000	
F	Thrust Washer (Rear)	Carbon/Teflon		1	0115-0033-1000	
G	Rear Housing	Noryl	3/8 OD Outlet	1	0893-0003-1000	
H	Drive Magnet			1	0115-0101-0100	
I	Screws	Stainless	0.118 x 0.5 x 0.236 Lg.	4	0893-0029-1000	
J	Motor Bracket	Plastic		1	0893-0035-1000	
K	"O" Ring	Viton	1/16 CS x 7/16 OD	1	0210-0008-1000	
L	Plug	Plastic		1	0125-0110-1000	
M	Motor (Ametek) 12 VDC Brushless			1	0893-0058-1000	
N	Submersible Assy. 12 VDC Brushless			n/a		Not Available

NOTE: Contact Factory for other materials and/or parts not listed.

0893-0037-1100 R1