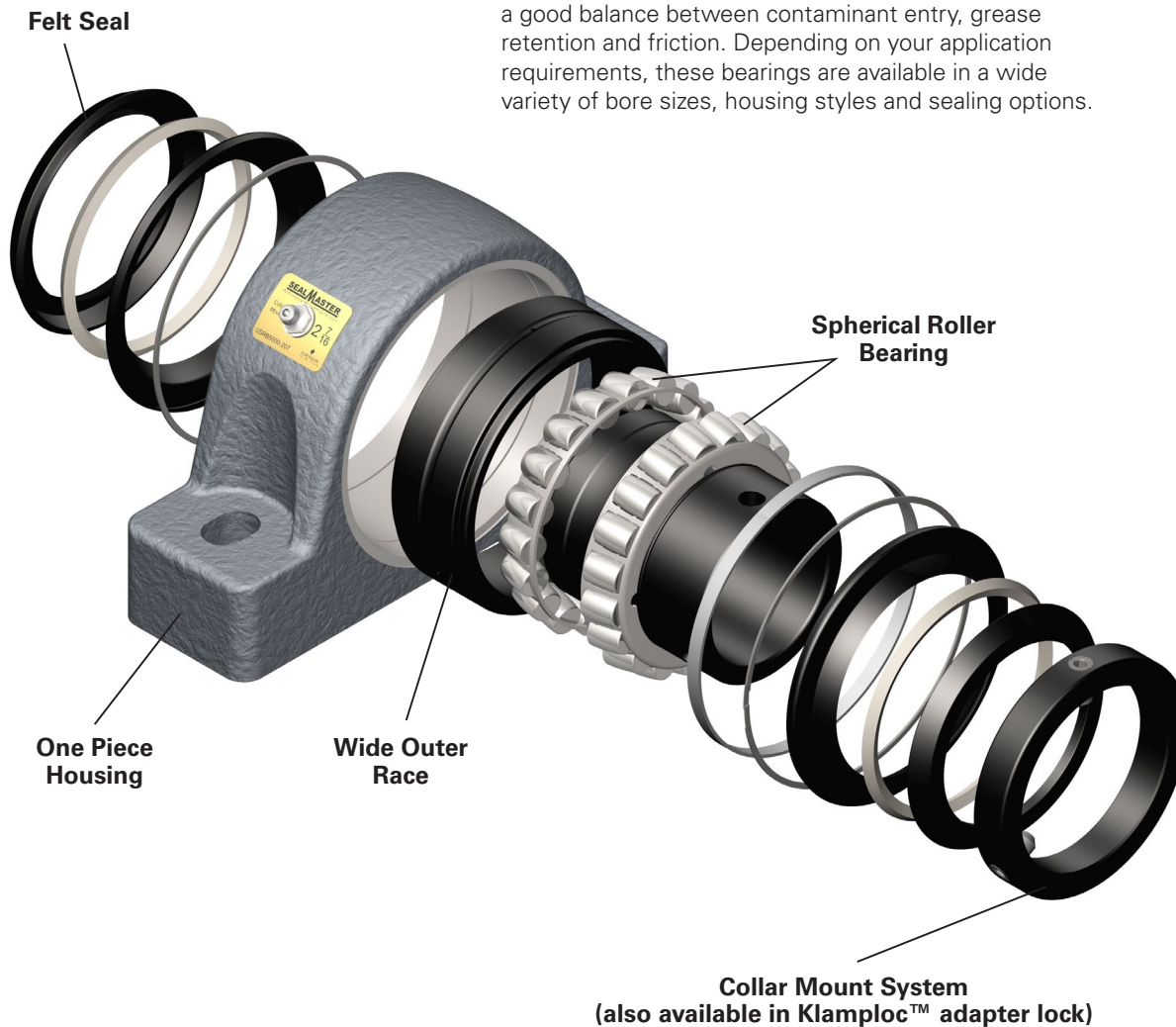


SEALMASTER® SPHERICAL ROLLER BEARING USRB™ SERIES

Sealmaster® USRB™ mounted spherical roller bearings feature black oxide treated bearing steel races with optimized bearing geometry for load capacity, misalignment and speed capabilities. The USRB bearing is available in both setscrew and Klamploc™ adapter locking mechanisms. The felt seal with flinger provides a good balance between contaminant entry, grease retention and friction. Depending on your application requirements, these bearings are available in a wide variety of bore sizes, housing styles and sealing options.



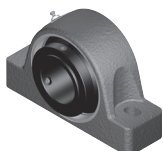
SEALMASTER® SPHERICAL ROLLER BEARING USRB™ SERIES

FEATURES AND BENEFITS



Double Row Spherical Roller Bearing

New Sealmaster® bearing geometries developed and manufactured by Regal engineers result in an innovative double-row spherical roller bearing with optimal load capacity, misalignment and speed capability.



One Piece Cast Iron and Ductile Iron Housings

Durable one piece cast iron (USRB5000) series and ductile iron (USRBE5000 series) housings provide load support. Two and four bolt pillow block housings have elongated bolt holes for interchangeability with competitive units.



Replaceable Cartridge Insert

The Sealmaster® performance mounted roller bearings have a replaceable cartridge insert that consists of a double-row spherical roller bearing with race-mounted seals. These integrally sealed, one-piece cartridge inserts can also be used for mounting in cylindrical-bore housings for an even wider range of applications.



Split Housings

Durable split housings (USRB5500 series) designed to the industry standard SAF footprint and replaceable cartridge inserts from 1 3/8" - 8" are shaft ready for easy installation.

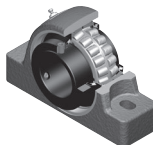


End Caps

Metal end caps push into USRB™ housings to cover rotating shafts, allowing users to better conform to OSHA requirements for personal protection from rotating shafts.

Available in sizes: 1 15/16, 2, 2 7/16, 2 1/2, 2 15/16, and 3.

MULTIPLE LOCKING SYSTEMS



Collar Mount System

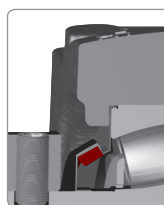
Sealmaster® performance mounted roller bearings feature locking collars and setscrews at 120°, providing a balanced three-point contact.



Klamploc™ Adapter Lock

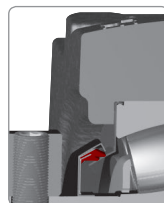
The Sealmaster® performance mounted roller bearings grip the shaft with a USRB™ Klamploc™ tapered adapter lock. This design reduces installation complexities by using the common sleeve-locknut installation process for roller bearings and has basic installation steps clearly marked on the collar. The new Sealmaster bearing innovation has a reduced length-through bore, similar to the setscrew collar mount system. Sealmaster Klamploc adapter lock bearings are also shaft ready and only require common tools such as a hammer & drift, spanner or pipe wrench.

MULTIPLE SEALING OPTIONS



Felt Seal

The Sealmaster® felt seal with flinger, mounted between races, can accommodate +/-2° of misalignment. The outer member rotates with the inner race, to help direct contamination away from the seal. Due to the unique spherical geometric design of the seal contact areas, sealing effectiveness is maintained throughout the entire specified range of misalignment. The design provides a tight labyrinth seal, which acts as a filter to help exclude foreign material and has low friction.



Contact Seal

The Sealmaster® double-lip contact seal, mounted between races, also can accommodate +/-2° of misalignment. The outer member rotates with the inner race, to help direct contamination away from the seal. Due to the unique spherical geometric design of the seal contact areas, sealing effectiveness is maintained throughout the entire specified range of misalignment. The rotating double-lip seal design allows for exceptional limiting speed.

SEALMASTER®

Regal Beloit America, Inc.

7120 New Buffington Road

Florence, KY 41042

Customer Service: 800-626-2120

Fax: 800-262-3292

Technical Service: 800-626-2093

www.RegalBeloit.com

APPLICATION CONSIDERATIONS

The proper selection and application of power transmission products and components, including the related area of product safety, is the responsibility of the customer. Operating and performance requirements and potential associated issues will vary appreciably depending upon the use and application of such products and components. The scope of the technical and application information included in this publication is necessarily limited. Unusual operating environments and conditions, lubrication requirements, loading supports, and other factors can materially affect the application and operating results of the products and components and the customer should carefully review its requirements. Any technical advice or review furnished by Regal Beloit America, Inc. and/or its affiliates ("Regal") with respect to the use of products and components is given in good faith and without charge, and Regal assumes no obligation or liability for the advice given, or results obtained, all such advice and review being given and accepted at customer's risk.

For a copy of our Standard Terms and Conditions of Sale, please visit <http://www.regalbeloit.com> (please see link at bottom of page to "Standard Terms and Conditions of Sale"). These terms and conditions of sale, disclaimers and limitations of liability apply to any person who may buy, acquire or use a Regal product referred to herein, including any person who buys from a licensed distributor of these branded products.

Regal, Klamploc, Sealmaster and USRB are trademarks of Regal Beloit Corporation or one of its affiliated companies.

©2015, 2018 Regal Beloit Corporation, All Rights Reserved. MCSSP18047E • Form# 9585E