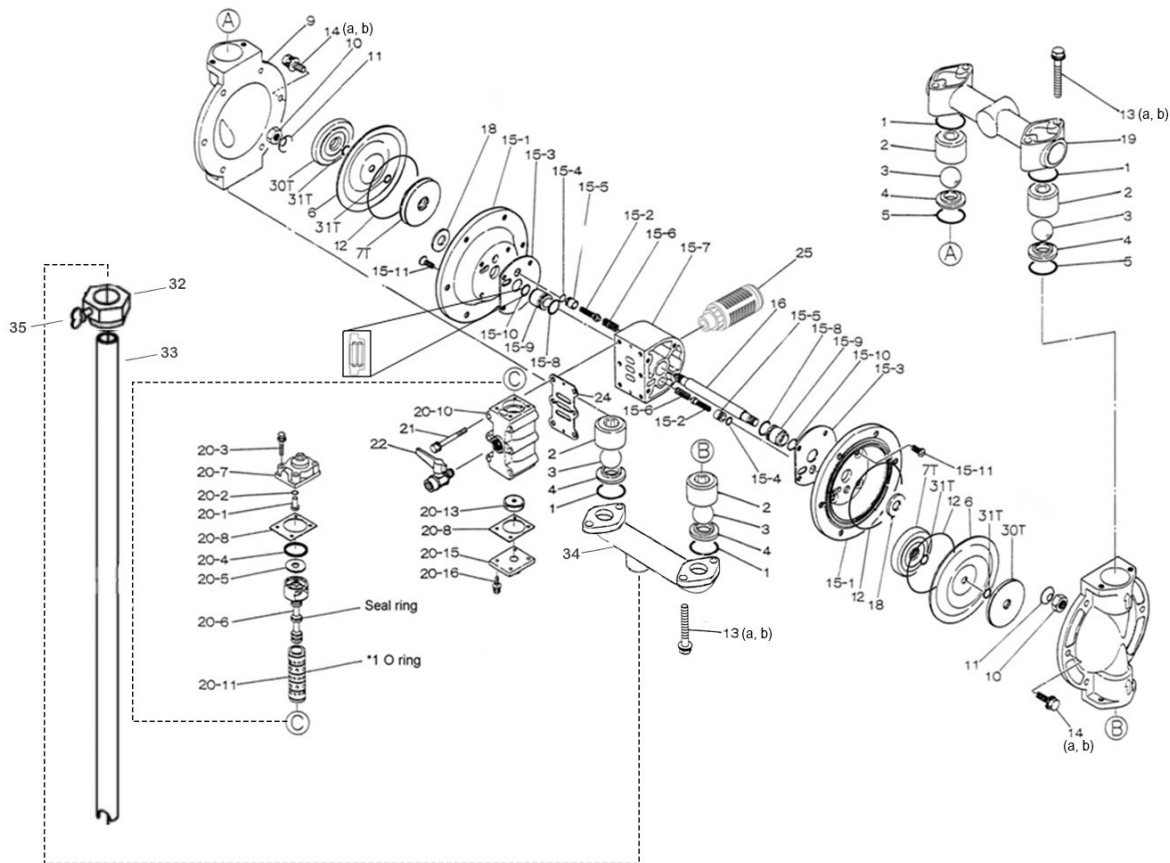


EXPLODED VIEW & PARTS LISTING

Model: NDP-20BST-D
Stainless Steel Drum Pump



Air Operated Double Diaphragm Pump



Air Operated Double Diaphragm Pump

REF. NO.	PART NO.	DESCRIPTION	QTY.	REORDER
1	643036	O-RING	4	
2	711701	BALL GUIDE	4	
3	770736	BALL	4	
4	711705	VALVE SEAT	4	
5	771131	O-RING	4	
6	771083	DIAPHRAGM	2	
7T	709456	CENTER DISK	2	
9	711693	OUT CHAMBER	2	
10	682263	NUT	2	
11	682730	CONED DISK SPRING	2	
12	640151	O-RING	2	
13a	621159	BOLT	8	
13b	631936	WAVE WASHER	8	
14a	621151	BOLT	12	
14b	631936	WAVE WASHER	12	
15	804878	BODY ASSY	1	
15-1	715937	AIR CHAMBER	2	
15-2	802360	PILO VALVE ASSY.	2	
15-3	771057	GASKET	2	
15-4	640009	O-RING	2	
15-5	771945	VALVE SEAT	2	
15-6	708666	SPRING	2	
15-7	709812	BODY	1	
15-8	685276	O-RING	2	
15-9	780324	THROAT BEARING	2	
15-10	685414	PACKING	2	
15-11	682486	FLAT HEAD BOLT	8	
16	709163	CENTER ROD	1	
18	771054	CUSHION	2	
19	831270	MANIFOLD	1	
20	802362	VALVE BODY ASSY.	1	
20-1	709161	RESET BUTTON	1	
20-2	640005	O-RING	1	
20-3	682704	BOLT	4	
20-4	771241	PACKING	1	
20-5	715961	PLAIN WASHER	1	
20-6	802400	C SPOOL VALVE ASSY.	1	
20-6 seal	771053	SEAL RING	5	
20-7	710221	CAP A	1	
20-8	771240	GASKET	2	
20-10	711639	VALVE BODY	1	
20-11	803931	SLEEVE ASSY.	1	
20-11-*1	771080	O-RING	6	
20-13	771914	CUSHION	1	
20-15	709305	CAP B	1	
20-16	682262	BOLT	4	
21	682265	BOLT	6	
22	686968	BALL VALVE	1	
24	771056	GASKET	1	
25	804697	SILENCER	1	
30T	709326	CENTER DISK	2	
31T	643013	O-RING	4	
32	20S-BUNG	BUNG ADAPTER	1	
33	20S-PIPE	PIPE	1	
34	20S-MANI	MANIFOLD	1	
35	91745A542	THUMB SCREW	1	
KIT	K20-MT-1	LIQUID SIDE KIT		
KIT	K225-AM	AIR MOTOR KIT		
KIT	NDP-20SD	DRUM KIT		

General Tools:

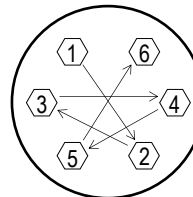
- Socket wrench - 10mm, 12mm, 13mm, 17mm, 22mm
- Hexagonal box wrenches - 5mm
- Open-end wrench - 22mm

Special Tools:

- Sleeve remover (713148) (sold separately)

Miscellaneous:

- Assembly Oil—turbine oil class 1 (equivalent to ISO VG32 grade)
- Nuts - M14x1.5
- Urea grease grade (NLGI) No. 2
- Lubricants equivalent to LOCTITE® Anti-Seize 767



Tightening Torques

- Center Rod 29 ft-lbf {40 N-m}
- Out Chamber 10 ft-lbf {13 N-m}
- Manifold Retainer Bolts 10 ft-lbf {13 N-m}
- Valve Body Bolts 5.5 ft-lbf {7.5 N-m}
- Cap A, Cap B 4.5 ft-lbf {6 N-m}

Customer Notes

Model #: _____
 Description: _____
 Serial #: _____
 Date Installed: _____
 Department Location: _____
 Tag/Project: _____