

BALDOR® • **RELIANCE**

Product Information Packet

CL5020

5HP, 1725RPM, 1PH, 60HZ, 215C, X3744LC, XPFC

Part Detail							
Revision:	AR	Status:	PRD/A	Change #:		Proprietary:	No
Type:	AC	Prod. Type:	3744LC	Elec. Spec:	37WGX011	CD Diagram:	CD0017A02
Enclosure:	XPFC	Mfg Plant:		Mech. Spec:	37J054	Layout:	37LYJ054
Frame:	215C	Mounting:	F1	Poles:	04	Created Date:	
Base:	RG	Rotation:	R	Insulation:	B	Eff. Date:	09-11-2015
Leads:	2#10 A PH,2#14 B PH					Replaced By:	
Literature:		Elec. Diagram:					

Nameplate NP0015XPSL	
NO.	<input type="text"/>
SER.	<input type="text"/>
SPEC.	37J54X11
CAT.NO.	CL5020
HP	5
VOLTS	230
AMPS	21
RPM	1725
HZ	60
SER.F.	1.00
RATING	40C AMB-CONT
FRAME	215C
USABLE AT 208V	<input type="text"/>
BLANK	<input type="text"/>

CC	<input type="text"/>
T. CODE	T2C
PH	1
CL	B
DES	L
CODE	J
NEMA-NOM-EFF	84
PF	92

Parts List		
Part Number	Description	Quantity
SA032949	SA 37J54X11	1.000 EA
RA028982	RA 37J54X11	1.000 EA
OC3030F11SP	CYL OIL CAP 30MFD/370V	1.000 EA
EC4270C06	ELEC CAP, 270-324 MFD, 250V, 2.06D X 4.	1.000 EA
35CB3001A02SP	EXPL PROOF CONDUIT BOX, 3/4"PIPE TAP LEA	1.000 EA
11XW1032G06	10-32 X .38, TAPTITE II, HEX WSHR SLTD U	1.000 EA
HW3001B01	BRASS CUP WASHER, FOR #8 SCREW	1.000 EA
37EP1703A01	FRONT EP, XPFC	1.000 EA
HW4500A19	1/4-28X1/4 SLOTTED PLUG F/S	2.000 EA
13XF0832A08	8-32 X.50 PAN HD,SLTD, TYPE F SCREW, ZIN	2.000 EA
HW5100A06	W2420-025 WVY WSHR (WB)	1.000 EA
60XN1032A07	10-32 X 1/2 TRUSS HEAD, TORX SERRATED ZN	2.000 EA
37EP1700A01	PU EP, XPFC, 213-5TC	1.000 EA
HW4001A02	3/8 HX SOC PIPE PLUG W/.75" TAPER (F/S)	2.000 EA
12XN2520A26	HX HD .25-20X1.625 ZN PLT	2.000 EA
HW1001A25	LOCKWASHER 1/4, ZINC PLT .493 OD, .255 I	2.000 EA
XY5013A12	NUT,1/2-13,HEX,STEEL,ZINCPLATED	4.000 EA
37FN3002A01SP	EXFN, PLASTIC, 9.00 OD, 1.155 ID	1.000 EA
51XB1214A20	12-14X1.25 HXWSSLD SERTYB	1.000 EA
37FH4000A02SP	FAN COVER, W/ PRIMER	1.000 EA
51XW1032A06	10-32 X .38, TAPTITE II, HEX WSHR SLTD S	3.000 EA
35CB3500A01SP	CONDUIT BOX LID, MACH	1.000 EA
51XN2520A16	SCREW, HEX WS SLT, ZN, 1/4-20 X 1.00	4.000 EA
HW2501E18	KEY, 1/4 SQ X 2.000	1.000 EA

Parts List (continued)		
Part Number	Description	Quantity
HA7000A02	KEY RETAINER RING, 1 1/8 DIA, 1 3/8 DIA	1.000 EA
85XU0407S04	4X1/4 U DRIVE PIN STAINLESS	6.000 EA
LB1115N	LABEL,LIFTING DEVICE (ON ROLLS)	1.000 EA
MJ1000A02	GREASE, POLYREX EM EXXON (USe 4824-15A)	0.050 LB
WD1000A15	3-520132-2 AMP FLAG (4M/RL NON-CANC/NON-	8.000 EA
HA6003A07	CAPACITOR CLAMP 37 XPROOF PLATED	2.000 EA
51XW1032A08	10/32X1/2 HXWSHR HD, SL, SERATED	2.000 EA
MG1025G29	WILKOFASST, 789.229, DARK CHARCOAL GRAY	0.028 GA
SP5172A33	.7 TYPE L TORQ STAT SWITCH LEAD ASSEMBLY	1.000 EA
NP0018F	ALUM UL XP CONDUIT BOX NAMEPLATE	1.000 EA
HA3106A03	THRUBOLT- 1/2-13 X 11.875 X	4.000 EA
LB1119N	WARNING LABEL	1.000 EA
LC0017A01	CONN LABEL-1 PHASE-SINGLE VOLT-REV ROT X	1.000 EA
NP0015XPSL	SS XP UL CSA CC CL-I GP-D	1.000 EA
37PA1039	PALLET PACK GRP, PRINT PK1026A06	1.000 EA
MN416A01	TAG-INSTAL-MAINT no wire (1200/bx) 11/14	1.000 EA

AC Induction Motor Performance Data

Record # 11965 - Typical performance - not guaranteed values

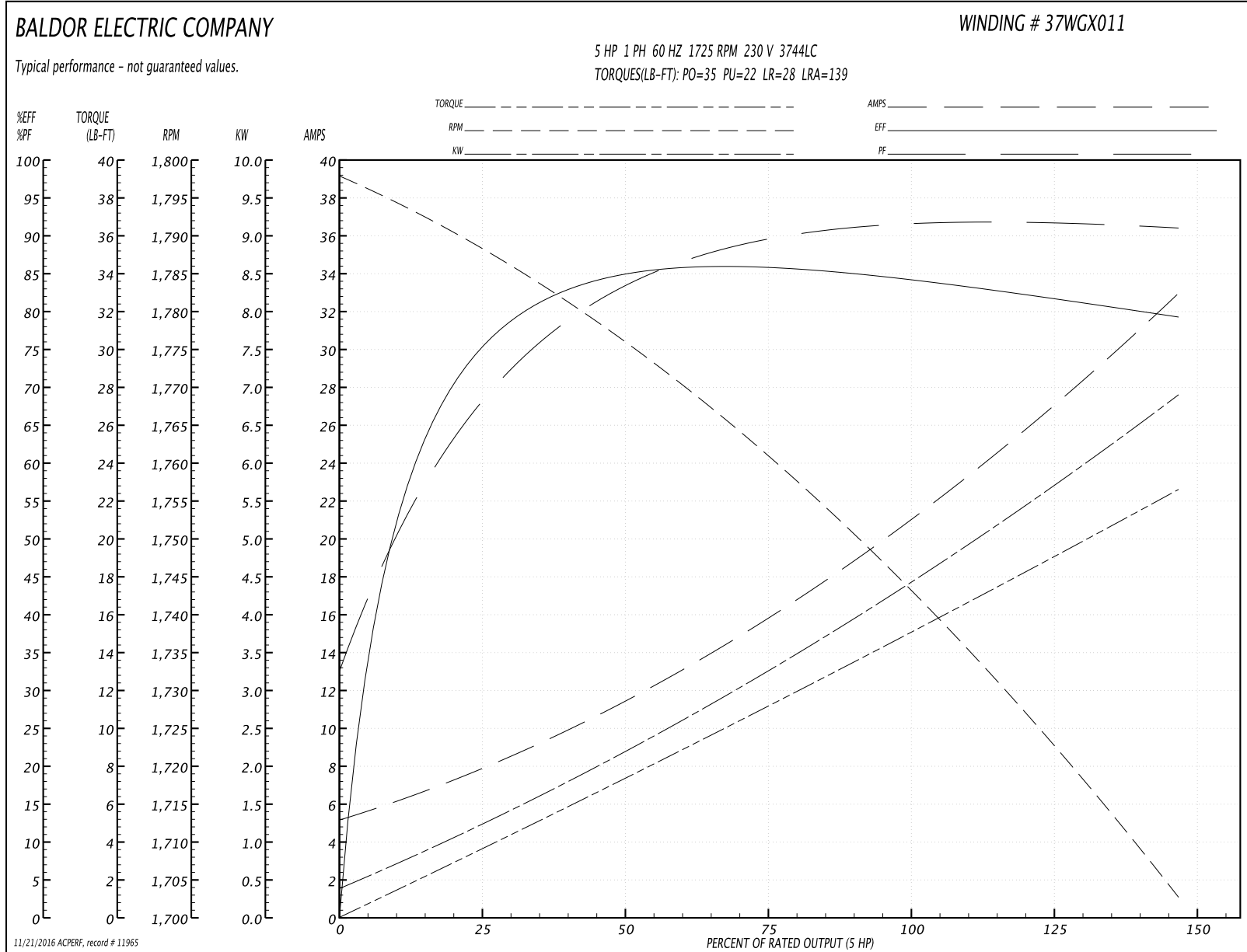
Winding: 37WX011-R001	Type: 3744LC	Enclosure: XPFC
------------------------------	---------------------	------------------------

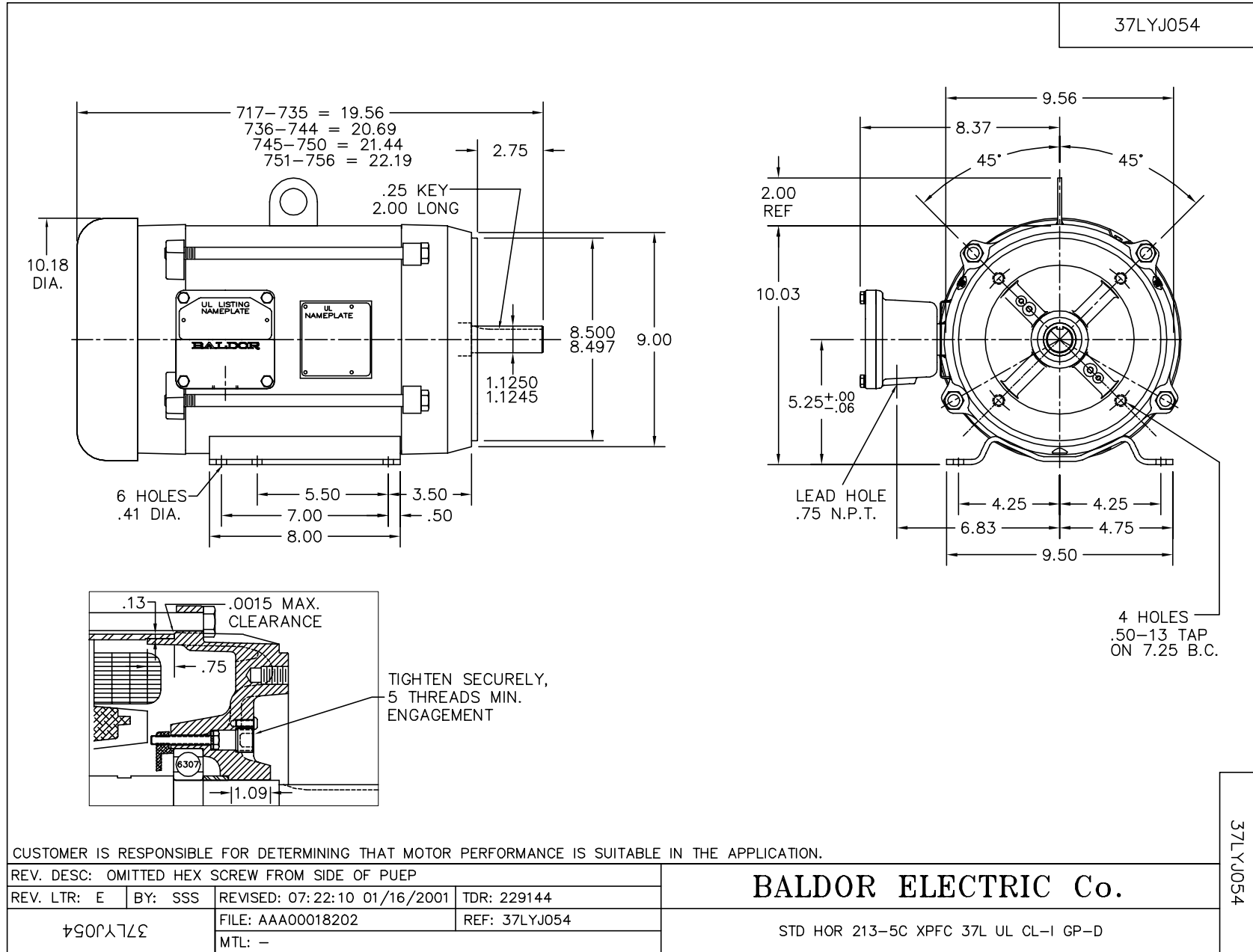
Nameplate Data				230 V, 60 Hz: Single Voltage Motor	
Rated Output (HP)	5			Full Load Torque	15.1 LB-FT
Volts	230			Start Configuration	direct on line
Full Load Amps	21			Breakdown Torque	35 LB-FT
R.P.M.	1725			Pull-up Torque	22 LB-FT
Hz	60	Phase	1	Locked-rotor Torque	28 LB-FT
NEMA Design Code	L	KVA Code	J	Starting Current	139 A
Service Factor (S.F.)	1			No-load Current	5.3 A
NEMA Nom. Eff.	84	Power Factor	92	Line-line Res. @ 25°C	0.298 Ω A Ph 2.17 Ω B Ph
Rating - Duty	40C AMB-CONT			Temp. Rise @ Rated Load	75°C

Load Characteristics 230 V, 60 Hz, 5 HP

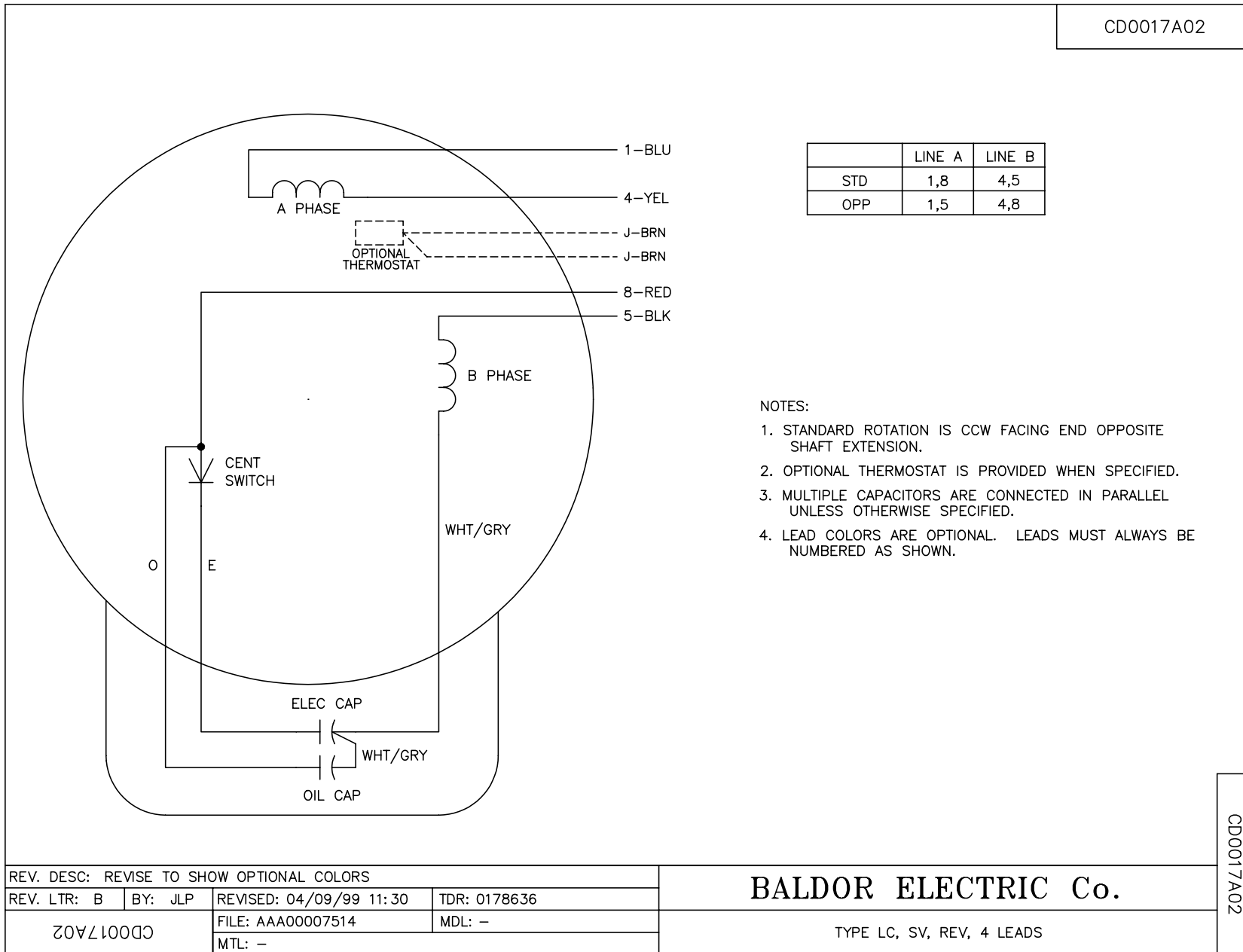
% of Rated Load	25	50	75	100	125	150
Power Factor	76	87	91	92	93	92
Efficiency	74.9	84.1	85.7	84.5	82.4	78.9
Speed	1787	1774	1761	1743	1726	1701
Line amperes	7.7	11.6	16.2	21.1	26.7	33

Performance Graph at 230V, 60Hz, 5.0HP Typical performance - Not guaranteed values





CD0017A02



	LINE A	LINE B
STD	1,8	4,5
OPP	1,5	4,8

NOTES:

1. STANDARD ROTATION IS CCW FACING END OPPOSITE SHAFT EXTENSION.
2. OPTIONAL THERMOSTAT IS PROVIDED WHEN SPECIFIED.
3. MULTIPLE CAPACITORS ARE CONNECTED IN PARALLEL UNLESS OTHERWISE SPECIFIED.
4. LEAD COLORS ARE OPTIONAL. LEADS MUST ALWAYS BE NUMBERED AS SHOWN.

CD0017A02

REV. DESC: REVISE TO SHOW OPTIONAL COLORS			
REV. LTR: B	BY: JLP	REVISED: 04/09/99 11:30	TDR: 0178636
CD0017A02		FILE: AAA00007514	MDL: -
		MTL: -	

BALDOR ELECTRIC Co.

TYPE LC, SV, REV, 4 LEADS