

BALDOR® • *RELIANCE*

Product Information Packet

EHM2528T

20HP, 1180RPM, 3PH, 60HZ, 286T, 4044M, OPSB, F1

Part Detail							
Revision:	B	Status:	PRD/A	Change #:		Proprietary:	No
Type:	AC	Prod. Type:	4044M	Elec. Spec:	40WGW958	CD Diagram:	CD0180
Enclosure:	OPSB	Mfg Plant:		Mech. Spec:	40J098	Layout:	40LYJ098
Frame:	286T	Mounting:	F1	Poles:	06	Created Date:	10-22-2013
Base:	RG	Rotation:	R	Insulation:	F	Eff. Date:	01-05-2017
Leads:	9#10					Replaced By:	
Literature:		Elec. Diagram:					

Nameplate NP2094E06B03										
CAT.NO.	EHM2528T									
SPEC.	40J098W958G1									
HP	20									
VOLTS	230/460									
AMPS	54/27									
RPM	1180									
FRAME	286T			HZ 60			PH 3			
SER.F.	1.15		CODE	F		DES	B		CL	F
NEMA-NOM-EFF	92.4		PF	77						
RATING	40C AMB-CONT									
CC	010A			USABLE AT 208V			56			
DE	6311			ODE	6309					
AUTO				MANUAL				NONE		
ENCL	OPSB			SN						
BLANK										

Parts List		
Part Number	Description	Quantity
SA271173	SA 40J098W958G1	1.000 EA
RA257803	RA 40J098W958G1	1.000 EA
S/P107-000-004	SUPER-E(284 FR. & UP)-CL PLANT,POLYREX E	1.000 EA
HA6361A01	LIFTING LUG FOR 37, 39 & 40 FRAME ZINC	2.000 EA
40CB4000A01	CONDUIT BOX 40, STAMPED	1.000 EA
51XF2520A08	SCREW, HEX SER SLT HD, ZN 1/4-20 X .50 L	2.000 EA
WD1000B16	T&B CX70TN TERMINAL	1.000 EA
40EP3200A02	STD FREP OPEN 309 BRG	1.000 EA
HW5100A11	W3917-042 WVY WSHR (WB)	1.000 EA
40EP3200B31	PUEP OPEN 311 BRG W/SH GND MTG	1.000 EA
84XN0540J08	5-40 X 1/2" SHCS, BLACK OXIDE	2.000 EA
XY3816A12	3/8-16 FINISHED NUT	8.000 EA
39CB4500A01	CONDUIT BOX LID 39, STAMPED, W/ PRIMER	1.000 EA
51XF2520A08	SCREW, HEX SER SLT HD, ZN 1/4-20 X .50 L	2.000 EA
HW2501H28	KEY, 1/2 SQ X 3.250	1.000 EA
MN416A01	TAG-INSTAL-MAINT no wire (1000/bx) 11/14	1.000 EA
HA4051A00	PLASTIC CAP FOR GREASE FITTING	1.000 EA
HW4500A20	1/8NPT SL PIPE PLUG	2.000 EA
MJ1000A02	GREASE, POLYREX EM EXXON (USe 4824-15A)	0.050 LB
HW4500A20	1/8NPT SL PIPE PLUG	2.000 EA
HA4051A00	PLASTIC CAP FOR GREASE FITTING	1.000 EA
MG1000G27	MED CHARCOAL METALLIC GREY 400-0096	0.070 GA
HA3154A03	STUD, 3/8-16 X 17.75	4.000 EA
40AD2002B01	LEXAN BAFFLE 40 FR OPEN	1.000 EA

Parts List (continued)		
Part Number	Description	Quantity
40AD2002B01	LEXAN BAFFLE 40 FR OPEN	1.000 EA
LC0181	CONNECTION LABEL	1.000 EA
NP2094E06B03	NP LABEL W/BARCODE (PREM EFF HVAC MTR)	1.000 EA
40PA1000	PACKAGING GROUP	1.000 EA

AC Induction Motor Performance Data

Record # 37004 - Typical performance - not guaranteed values

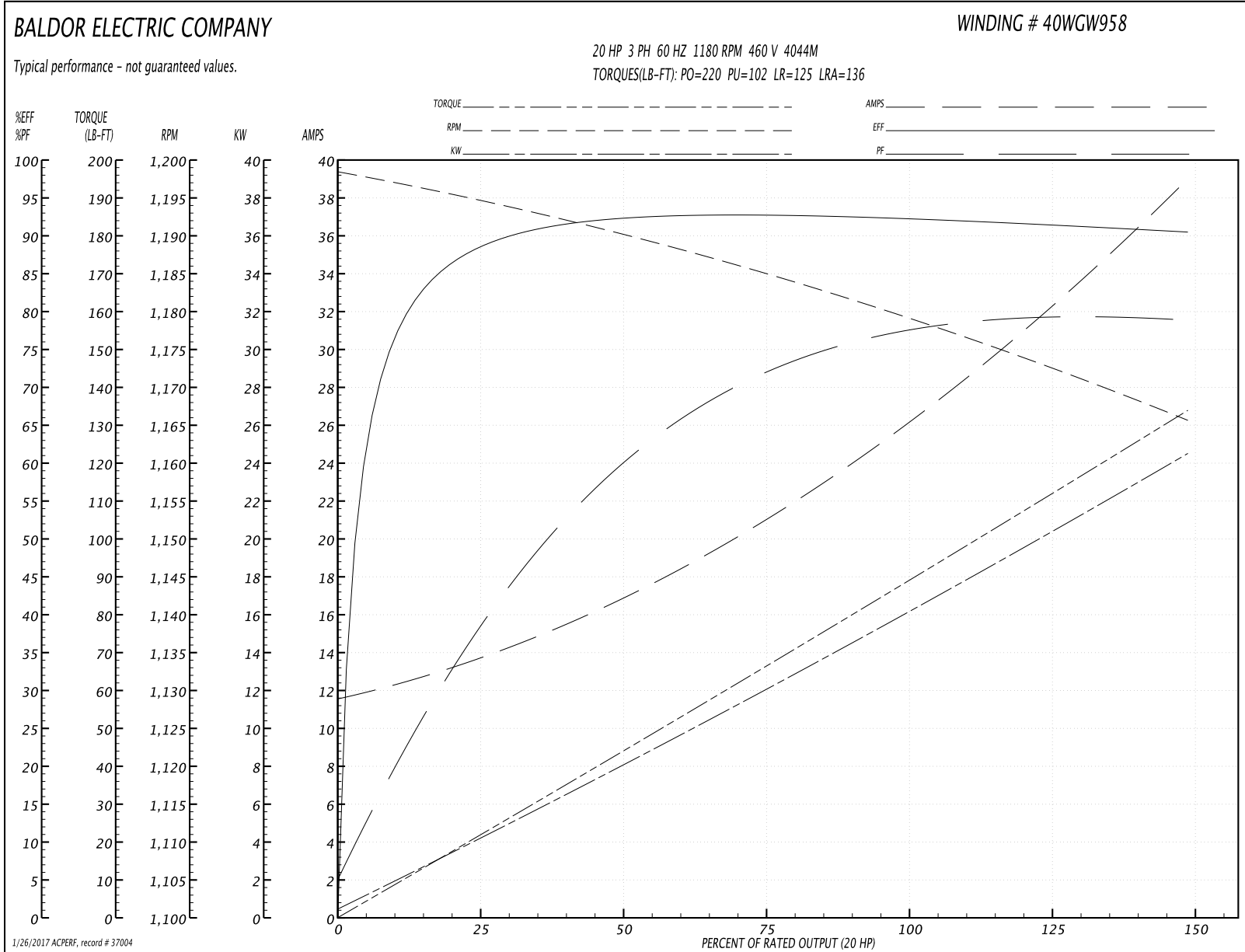
Winding: 40WGW958-R001	Type: 4044M	Enclosure: OPSB
-------------------------------	--------------------	------------------------

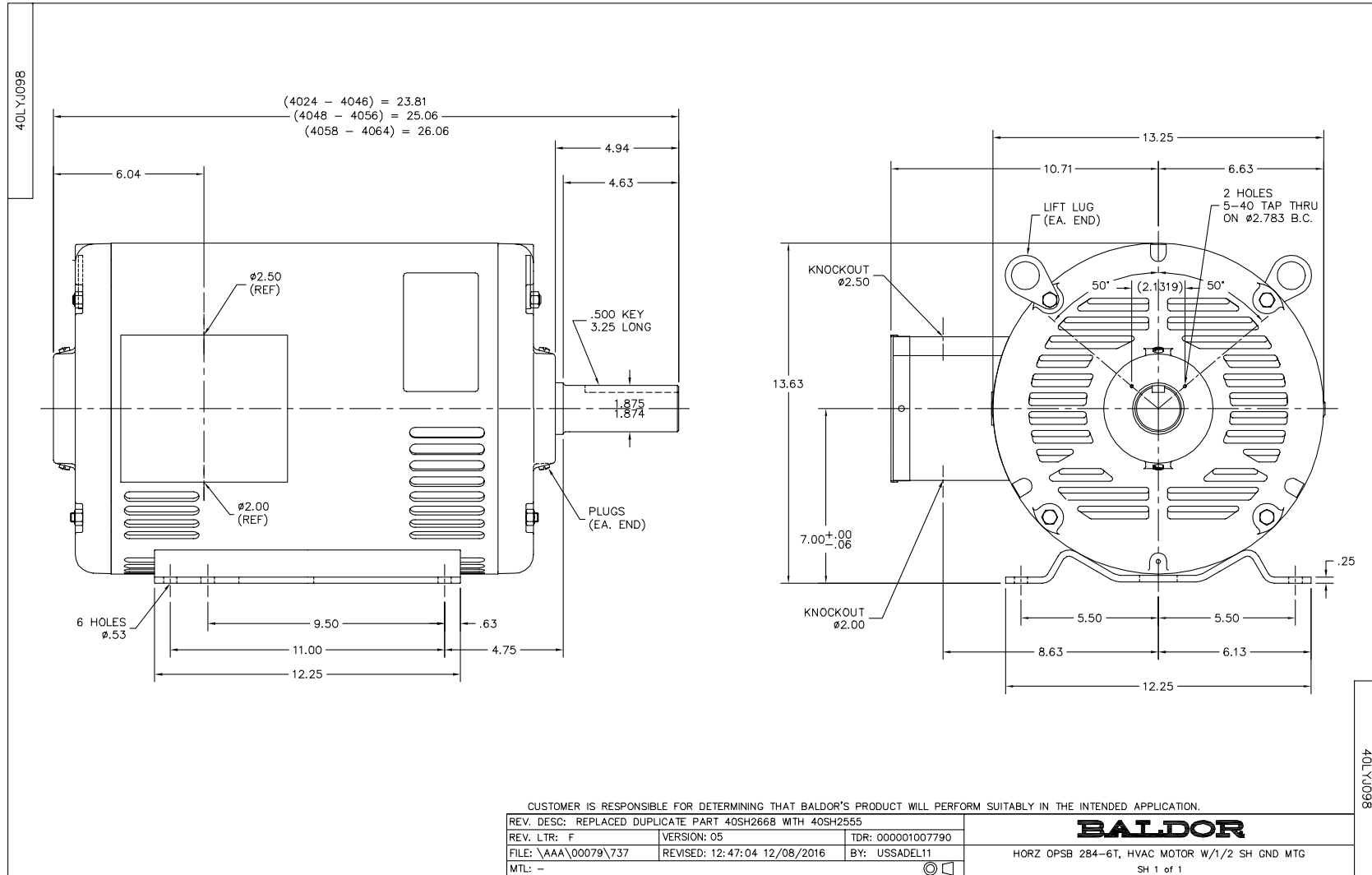
Nameplate Data				460 V, 60 Hz: High Voltage Connection	
Rated Output (HP)	20			Full Load Torque	90.2 LB-FT
Volts	230/460			Start Configuration	direct on line
Full Load Amps	54/27			Breakdown Torque	220 LB-FT
R.P.M.	1180			Pull-up Torque	102 LB-FT
Hz	60	Phase	3	Locked-rotor Torque	125 LB-FT
NEMA Design Code	B	KVA Code	F	Starting Current	136 A
Service Factor (S.F.)	1.15			No-load Current	11.8 A
NEMA Nom. Eff.	92.4	Power Factor	77	Line-line Res. @ 25°C	0.49446 Ω
Rating - Duty	40C AMB-CONT			Temp. Rise @ Rated Load	33°C
S.F. Amps				Temp. Rise @ S.F. Load	40°C
				Locked-rotor Power Factor	32
				Rotor inertia	5.39 LB-FT ²

Load Characteristics 460 V, 60 Hz, 20 HP

% of Rated Load	25	50	75	100	125	150	S.F.
Power Factor	38	60	72	77	79	79	78
Efficiency	87.7	92.1	92.8	92.4	91.5	90.3	91.9
Speed	1193.9	1190.8	1184.7	1178.8	1172.7	1165.5	1175
Line amperes	13.3	16.6	21.4	26.7	32.3	38.9	30.1

Performance Graph at 460V, 60Hz, 20.0HP Typical performance - Not guaranteed values





CD0180



LOW VOLTAGE
(2D)



HIGH VOLTAGE
(1D)



NOTES:

1. INTERCHANGE ANY TWO LINE LEADS TO REVERSE ROTATION.
2. OPTIONAL THERMOSTATS ARE PROVIDED WHEN SPECIFIED.
3. ACTUAL NUMBER OF INTERNAL PARALLEL CIRCUITS MAY BE A MULTIPLE OF THOSE SHOWN ABOVE.
4. LEAD COLORS ARE OPTIONAL. LEADS MUST ALWAYS BE NUMBERED AS SHOWN.

REV. DESC: REVISE TO SHOW OPTIONAL COLORS			
REV. LTR: C	BY: JLP	REVISED: 01/21/99 2:28	TDR: 0171435
0810D0		FILE: AAA00005148	MDL: -
		MTL: -	

BALDOR ELECTRIC Co.

3PH, DV, 9 LEADS, DELTA CONNECTION

CD0180