

BALDOR® • RELIANCE

Product Information Packet

IDCSWDM3542

.75HP,1745RPM,3PH,60HZ,56C,3519M,TENV,F1

Part Detail							
Revision:	R	Status:	PRD/A	Change #:		Proprietary:	No
Type:	AC	Prod. Type:	3518M	Elec. Spec:	35WGP559	CD Diagram:	CD0005
Enclosure:	TENV	Mfg Plant:		Mech. Spec:	35S638	Layout:	35LYS638
Frame:	56C	Mounting:	F1	Poles:	04	Created Date:	06-13-2008
Base:	RG	Rotation:	R	Insulation:	H	Eff. Date:	11-04-2016
Leads:	9#18					Replaced By:	
Literature:		Elec. Diagram:					

Nameplate NP1608L	
CAT NO	IDCSWDM3542
SPEC.	35S638P559G1
FRAME	56C HP .75 TE
VOLTS	208-230/460
MAG CUR	1.28/.64 FLA 2.36-2.16/1.08
RPM	1740 RPM MAX 6000
HZ	60 PH 3 CLASS H
SER.F.	1.00 DES B SL HZ 1.83
NEMA-NOM-EFF	82.5 WK2 0.106
BLWR V	PH HZ A
RATING	40C AMB-CONT
DE BRG	6205 ODE BRG 6203
CC	SN

Parts List		
Part Number	Description	Quantity
SA174395	SA 35S638P559G1	1.000 EA
RA162527	RA 35S638P559G1	1.000 EA
NS2512A01	INSULATOR, CONDUIT BOX X	1.000 EA
35CB5001A03	CONDUIT BOX KIT, FOR SUPER II WASHDOWN	1.000 EA
11XW1032G06	10-32 X .38, TAPTITE II, HEX WSHR SLTD U	1.000 EA
35EP3100M72MU	SPL FR EP-ENCL-203 BRG-DIE CAST ALUM(BAL	1.000 EA
HW4500A33	1/8 NPT STAINLESS,HOLO-KROME #13002,PRES	3.000 EA
HW5100A03SP	WAVY WASHER (W1543-017)	1.000 EA
35EP3300A75MU	PU E.P., CAST-FACE MTD-56C-205 BRG(BALL	1.000 EA
HW4500A33	1/8 NPT STAINLESS,HOLO-KROME #13002,PRES	3.000 EA
HW4606A02	JM CLIPPER/SEAL (LWE-0938-1624-AL23)	1.000 EA
12XN1032S20	10-32 X 1-1/4 HEX M.S. , STAINLESS STEEL	2.000 EA
HA1049A01	DUBO LOK WASHER SIZE 10 (NYLON LOCK SEAL	2.000 EA
HA1049A01	DUBO LOK WASHER SIZE 10 (NYLON LOCK SEAL	4.000 EA
HW2502D13	SS KEY, 3/16 SQ X 1.375	1.000 EA
HA7000A04	KEY RETAINER 0.625 DIA SHAFTS	1.000 EA
MJ5001A02	732 CL SEALANT 3 OZ DIXIE BEARING 289100	0.001 EA
85XU0407S04	4X1/4 U DRIVE PIN STAINLESS	2.000 EA
LB1164	LABEL,WARNING AND DRAIN	1.000 EA
HA5027A04	HA4054 T-DRAIN X2 BAGGED	1.000 EA
MJ1000A02	GREASE, POLYREX EM EXXON (USe 4824-15A)	0.050 LB
HA3100S12	THRUBOLT 7.625 LENGTH 1.250 TH LENGTH SS	4.000 EA
LC0145B01	CONNECTION LABEL	1.000 EA
NP1608L	SS WD INV UL CSA CC REV MTG	1.000 EA

Parts List (continued)		
Part Number	Description	Quantity
35PA1066	PKG GRP, PRINT PK1008A06	1.000 EA
MN416A01	TAG-INSTAL-MAINT no wire (1200/bx) 11/14	1.000 EA

AC Induction Motor Performance Data

Page 1 of 1



AC Induction Motor Performance Data
 Record # 26878
 Typical performance - not guaranteed values

Winding: 35WGP559	Type: 3519M	Enclosure: TENV
--------------------------	--------------------	------------------------

Nameplate Data			General Characteristics at 460 V, 60 Hz: High Volt Connection		
Rated Output (HP)	.75		Full Load Torque	2.27 LB-FT	
Volts	208-230/460		Start Configuration	DOL	
Full Load Amps	2.36-2.16/1.08		Break Down Torque	10.4 LB-FT	
R.P.M.	1740		Pull-Up Torque	6.61 LB-FT	
Hz	60	Phase	3	Locked-rotor Torque	7.4 LB-FT
NEMA Design Code	B	KVA Code	M	Starting Current	9.77 Amps
Service Factor	1		No-load Current	0.64 Amps	
NEMA Nom. Eff.	82.5	P.F.	78	Line-line Res. @ 25°C.	23.5 Ohms
Rating - Duty	40C AMB-CONT		Temp. Rise @ Rated Load	77°C	
S.F. Amps	2.8-2.54/1.27		Temp. Rise @ S.F. Load		

Load Characteristics at 460 Volts, 60 Hz, 0.75 HP

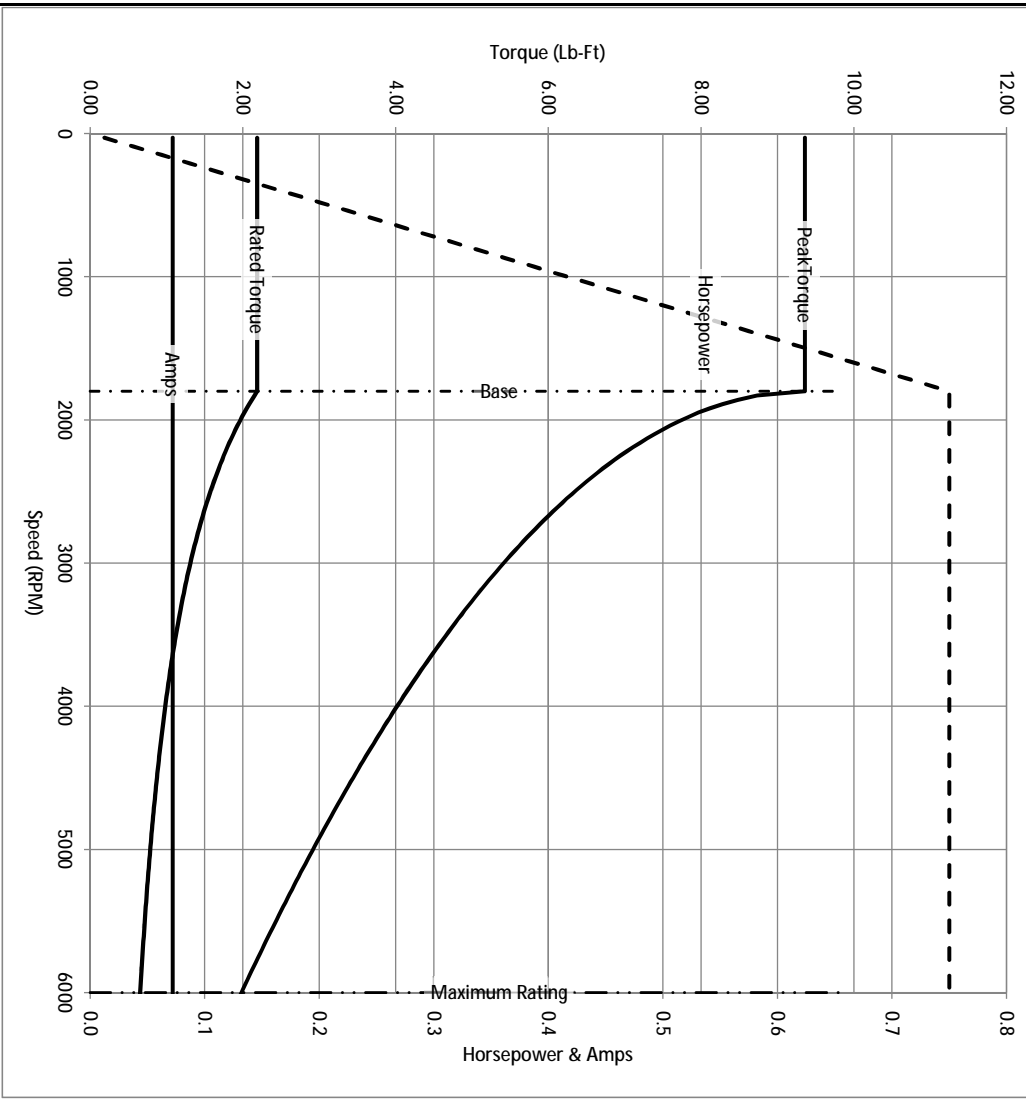
	25	50	75	100	125	150	S.F.
% of Rated Load	25	50	75	100	125	150	S.F.
Power Factor	35	56	70	78	84	88	
Efficiency	73	81.9	83.8	83.5	82.5	80.6	
Speed	1787	1773	1758	1743	1728	1709	
Line Amperes	0.679	0.776	0.909	1.08	1.27	1.49	

Baldor Electric Company Fort Smith, Arkansas

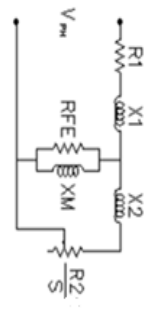


3/6/2013

Catalog	IDCSWDM3542	NP VOLTS	208-230/460	ENCLOSURE	TENV	WYE CONN EQ CRT OHMS PER PHASE (BASE RATING, 20C)
FRAME	56C	NP AMPS	2.36-2.16/1.08	Base Volts	460	R1 11.500
HP	0.75 HP	DUTY	Cont	Base AMPS	1.08	R2 6.840
BASE SPEED	1800	MAX SAFE RPM	6000	Slip Hz	1.90	XM1
PHASE/HZ	3/60	AMB ⁰ /TNSDL	40/H	WK ² (lb-ft ²)	0.112	X2 9.434
						368.350



Remarks: Calculated Data

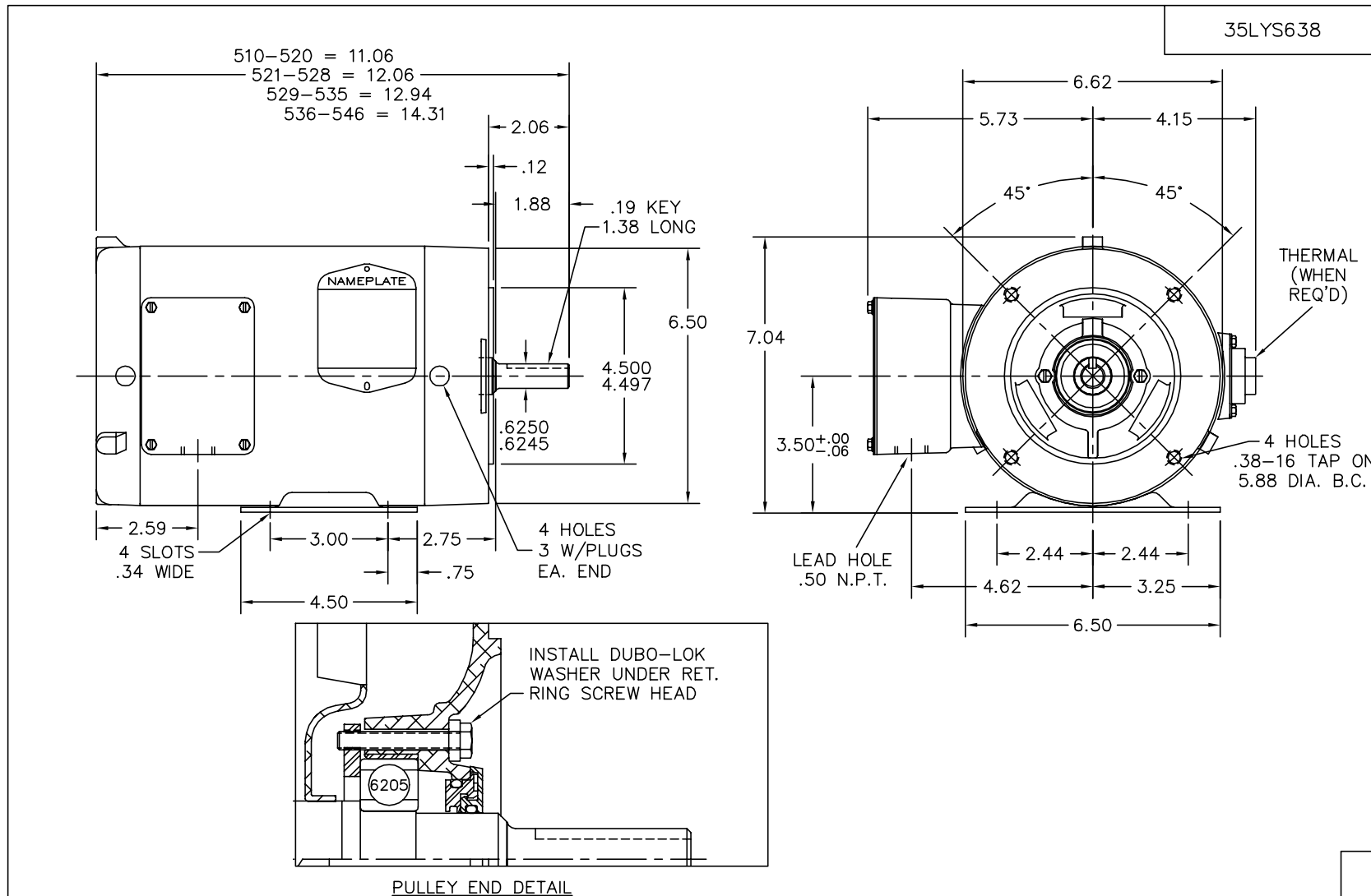


BALDOR
A MEMBER OF THE ABB GROUP

DR BY ENR
CK BY
APP BY ENR
DATE 3/6/2013

A-C MOTOR
PERFORMANCE CURVES

35S638P559G1
ISSUE DATE 3/6/2013



CUSTOMER IS RESPONSIBLE FOR DETERMINING THAT MOTOR PERFORMANCE IS SUITABLE IN THE APPLICATION.

REV. DESC: UPDATE LAYOUT PER BOM, FREP		
REV. LTR: B	VERSION: 02	TDR: 000000460581
8C9SΛ7C	FILE: \AAA\00093\289	REVISED: 13:08:35 03/27/2008
	MTL: -	BY: ENODIDO

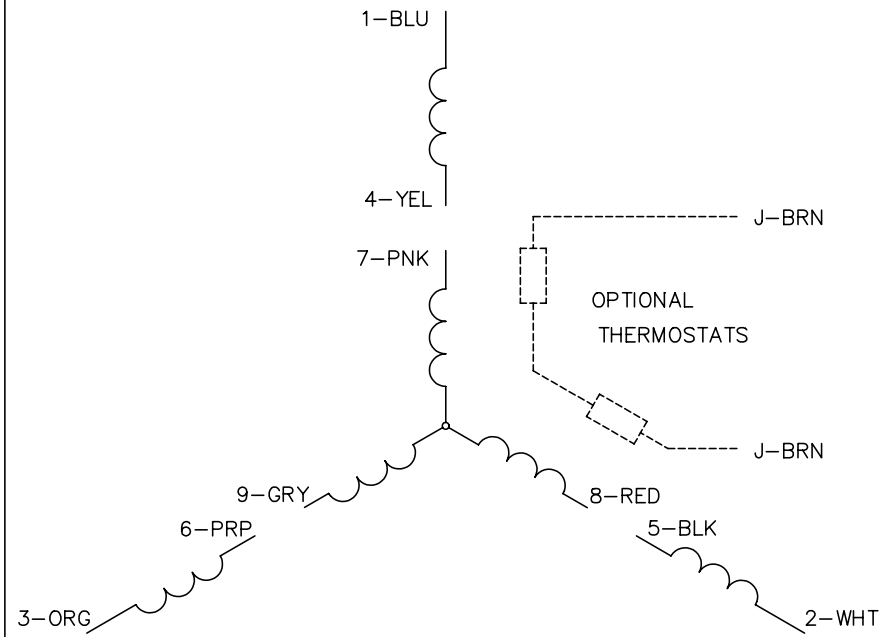
BALDOR • DODGE • RELIANCE

HOR 56C TENV 35M WD2 (PAINT FREE) INVERTER, RAISED LTR

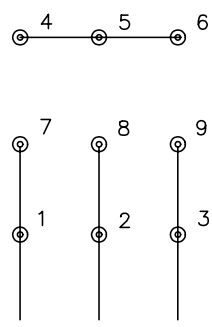
SH 1 of 1

35LYS638

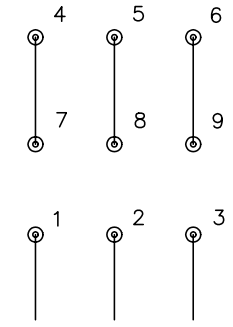
CD0005



LOW VOLTAGE (2Y)



HIGH VOLTAGE (1Y)



NOTES:

1. INTERCHANGE ANY TWO LINE LEADS TO REVERSE ROTATION.
2. OPTIONAL THERMOSTATS ARE PROVIDED WHEN SPECIFIED.
3. ACTUAL NUMBER OF INTERNAL PARALLEL CIRCUITS MAY BE A MULTIPLE OF THOSE SHOWN ABOVE.
4. LEAD COLORS ARE OPTIONAL. LEADS MUST ALWAYS BE NUMBERED AS SHOWN.

REV. DESC: REVISE TO SHOW OPTIONAL COLORS			
REV. LTR: E	BY: JLP	REVISED: 01/19/99 10:15	TDR: 0171435
9000D		FILE: AAA00005140	MDL: -
		MTL: -	

BALDOR ELECTRIC Co.

3PH, DV, 9 LEADS

CD0005