

BALDOR® • ***RELIANCE***

Product Information Packet

VSSEWDM3550T

1.5HP,3500RPM,3PH,60HZ,143TC,3532M,TENV

| Part Detail | | | | | | | |
|-------------|---|----------------|-------|-------------|----------|---------------|------------|
| Revision: | T | Status: | PRD/A | Change #: | | Proprietary: | No |
| Type: | AC | Prod. Type: | 3532M | Elec. Spec: | 35WGR929 | CD Diagram: | CD0005 |
| Enclosure: | TENV | Mfg Plant: | | Mech. Spec: | 35Z201 | Layout: | 35LYZ201 |
| Frame: | 143TC | Mounting: | F1 | Poles: | 02 | Created Date: | 01-20-2011 |
| Base: | N | Rotation: | R | Insulation: | H | Eff. Date: | 10-07-2016 |
| Leads: | 9#18 Dbl Dip & Bake,0#0 Phase Insulate,0#0 15" LEAD LENGY | | | | | Replaced By: | |
| Literature: | | Elec. Diagram: | | | | | |

| | | | | | | | | | | |
|----------------------------|--------------|--|-------------|------------|-----------------------|----|--|--------------|-----------|---|
| Nameplate NP1953A01 | | | | | | | | | | |
| CAT.NO. | VSSEWDM3550T | | | | | | | | | |
| SPEC. | 35Z201R929G1 | | | | | | | | | |
| HP | 1.5 | | | | | | | | | |
| VOLTS | 230/460 | | | | | | | | | |
| AMP | 3.6/1.8 | | | | | | | | | |
| RPM | 3500 | | | | | | | | | |
| FRAME | 143TC | | | | HZ | 60 | | | PH | 3 |
| SER.F. | 1.15 | | CODE | M | DES | B | | CLASS | H | |
| NEMA-NOM-EFF | 85.5 | | | PF | 90 | | | | | |
| RATING | 40C AMB-CONT | | | | | | | | | |
| CC | 010A | | | | USABLE AT 208V | | | 3.7 | | |
| DE | 6205 | | | ODE | 6205 | | | | | |
| ENCL | TENV | | SN | | | | | | | |

| Parts List | | |
|-------------|--|----------|
| Part Number | Description | Quantity |
| SA242949 | SA 35Z201R929G1 | 1.000 EA |
| RA229850 | RA 35Z201R929G1 | 1.000 EA |
| 11XW1032G06 | 10-32 X .38, TAPTITE II, HEX WSHR SLTD U | 1.000 EA |
| 35FE1917A10 | FREP TENV 205 BRG NO GRS 4X.125 NPT (SS) | 1.000 EA |
| HW4500A33 | 1/8 NPT STAINLESS,HOLO-KROME #13002,PRES | 3.000 EA |
| HW4500A33 | 1/8 NPT STAINLESS,HOLO-KROME #13002,PRES | 3.000 EA |
| RM1070A25 | O-RING,VITON 6.19 ID X .062 C.S. NOM | 1.000 EA |
| HW5100A05 | WVY WSHR F/205 & 304 BRGS | 1.000 EA |
| 35PE1916A05 | PUEP 56C ENC 205 BRG 4X.125 NPT (SS) | 1.000 EA |
| RM1070A25 | O-RING,VITON 6.19 ID X .062 C.S. NOM | 1.000 EA |
| HW4600E99 | AXIAL FACE SEAL 76925-9042-0447 SS CASE | 1.000 EA |
| RM1070A26 | O-RING,4.5MM I.D.X1.5MM C.S. (VITON) | 4.000 EA |
| 36GS3008SP | WHITE NEOPREME KO BOX LID GASKET | 1.000 EA |
| 35CB4515 | 35 CB LID #304 STAINLESS STEEL | 1.000 EA |
| 59XN0832S07 | 8/32 X 7/16 HX WS HD SER X | 4.000 EA |
| HW2502D13 | SS KEY, 3/16 SQ X 1.375 | 1.000 EA |
| HA7000A01 | KEY RETAINER 7/8" DIA SHAFT | 1.000 EA |
| MJ5001A27 | 32220KN GRAY SEALER *MIN BUY 4 QTS=1GAL | 0.005 QT |
| MJ5004A37 | #76732 LOCTITE ANTISEIZE THRD COMPOUND | 0.005 EA |
| HA5027A02 | HA4054 T-DRAIN X2 BAGGED WITH LABEL | 1.000 EA |
| MJ1000A02 | GREASE, POLYREX EM EXXON (USe 4824-15A) | 0.050 LB |
| WD5603A01 | KIT, CLOSED-END LEAD SPLICE (18-14GA) | 1.000 EA |
| HA3100S05 | THRUBOLT - 10-32 X 10.125 302 OR 303 | 4.000 EA |
| 36PA1000 | PKG GRP, PRINT PK1016A06 | 1.000 EA |

| Parts List (continued) | | |
|-------------------------------|--|-----------------|
| Part Number | Description | Quantity |
| PK3082 | STYROFOAM CRADLE | 1.000 EA |
| MN416A01 | TAG-INSTAL-MAINT no wire (1200/bx) 11/14 | 1.000 EA |
| LB1561 | INSTRUCTION TAG CLOSED-END SPLICE KIT AC | 1.000 EA |
| HA5027A07 | 85XU1208S08 FACE DRAIN PINS BAGGED | 1.000 EA |

AC Induction Motor Performance Data

Record # 20333 - Typical performance - not guaranteed values

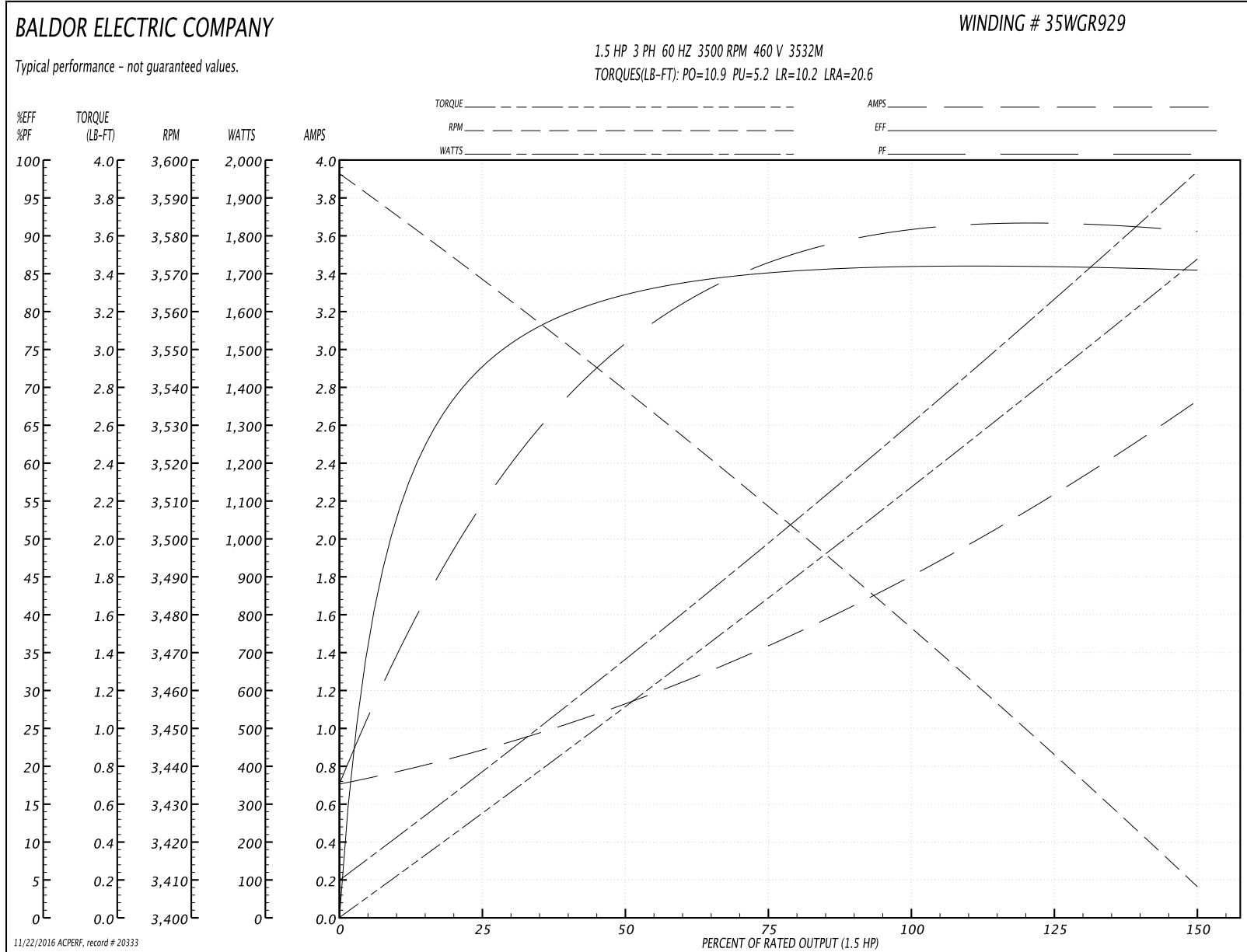
| | | |
|-------------------------------|--------------------|------------------------|
| Winding: 35WGR929-R003 | Type: 3532M | Enclosure: TENV |
|-------------------------------|--------------------|------------------------|

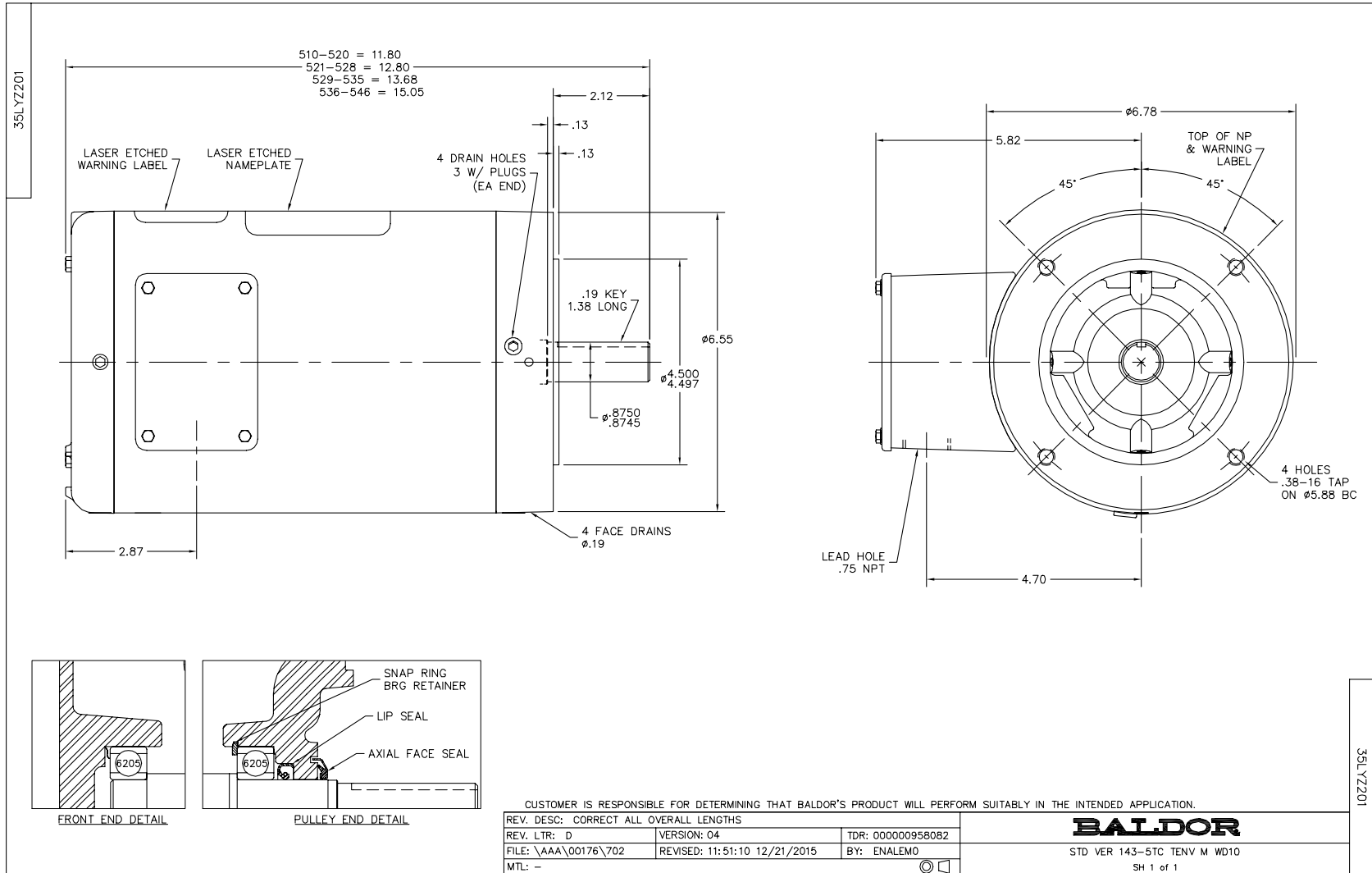
| Nameplate Data | | | | 460 V, 60 Hz: High Voltage Connection | |
|-----------------------|--------------|--------------|----|--|---------------------------|
| Rated Output (HP) | 1.5 | | | Full Load Torque | 2.31 LB-FT |
| Volts | 208-230/460 | | | Start Configuration | direct on line |
| Full Load Amps | 3.7-3.6/1.8 | | | Breakdown Torque | 10.9 LB-FT |
| R.P.M. | 3500 | | | Pull-up Torque | 5.2 LB-FT |
| Hz | 60 | Phase | 3 | Locked-rotor Torque | 10.2 LB-FT |
| NEMA Design Code | B | KVA Code | M | Starting Current | 20.6 A |
| Service Factor (S.F.) | 1.15 | | | No-load Current | 0.694 A |
| NEMA Nom. Eff. | 85.5 | Power Factor | 90 | Line-line Res. @ 25°C | 7.64 Ω |
| Rating - Duty | 40C AMB-CONT | | | Temp. Rise @ Rated Load | 78°C |
| S.F. Amps | | | | Temp. Rise @ S.F. Load | 90°C |
| | | | | Locked-rotor Power Factor | 46 |
| | | | | Rotor inertia | 0.0885 LB-FT ² |

Load Characteristics 460 V, 60 Hz, 1.5 HP

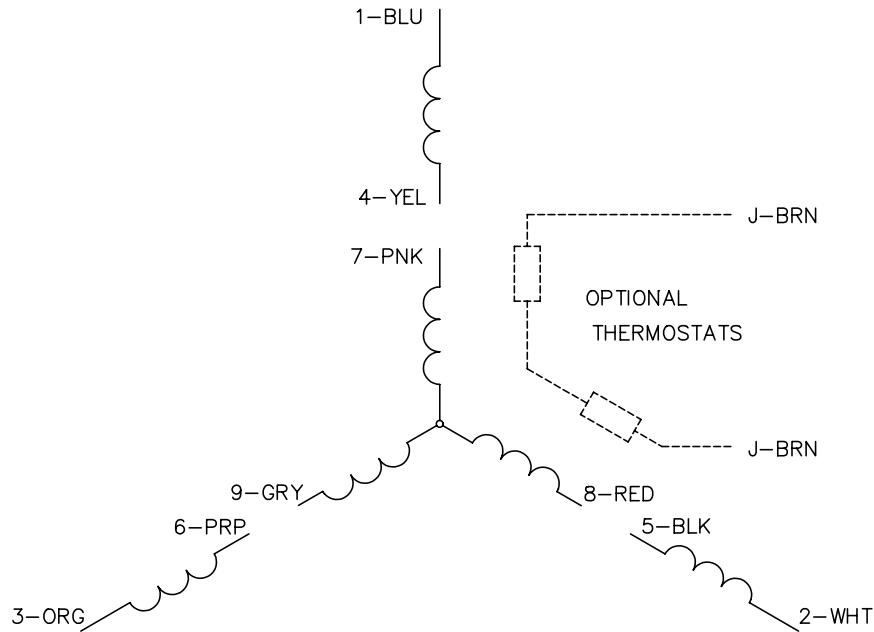
| % of Rated Load | 25 | 50 | 75 | 100 | 125 | 150 | S.F. |
|-----------------|-------|------|------|------|------|------|------|
| Power Factor | 55 | 77 | 86 | 92 | 93 | 90 | 93 |
| Efficiency | 73.8 | 82.3 | 85.2 | 86.1 | 85.9 | 85.5 | 86 |
| Speed | 3564 | 3536 | 3507 | 3476 | 3444 | 3406 | 3457 |
| Line amperes | 0.907 | 1.15 | 1.48 | 1.81 | 2.23 | 2.75 | 2.06 |

Performance Graph at 460V, 60Hz, 1.5HP Typical performance - Not guaranteed values





CD0005



LOW VOLTAGE
(2Y)



LINE

HIGH VOLTAGE
(1Y)



LINE

NOTES:

1. INTERCHANGE ANY TWO LINE LEADS TO REVERSE ROTATION.
2. OPTIONAL THERMOSTATS ARE PROVIDED WHEN SPECIFIED.
3. ACTUAL NUMBER OF INTERNAL PARALLEL CIRCUITS MAY BE A MULTIPLE OF THOSE SHOWN ABOVE.
4. LEAD COLORS ARE OPTIONAL. LEADS MUST ALWAYS BE NUMBERED AS SHOWN.

| | | | |
|---|---------|-------------------------|--------------|
| REV. DESC: REVISE TO SHOW OPTIONAL COLORS | | | |
| REV. LTR: E | BY: JLP | REVISED: 01/19/99 10:15 | TDR: 0171435 |
| 9000D | | FILE: AAA00005140 | MDL: - |
| | | MTL: - | |

BALDOR ELECTRIC Co.

3PH, DV, 9 LEADS

CD0005