

# **BALDOR**® • *RELIANCE*

## **Product Information Packet**

# **VSSEWDM3709T**

**7.5HP,3500RPM,3PH,60HZ,213TC,3735M,TEFC**

Part Detail							
Revision:	H	Status:	PRD/A	Change #:		Proprietary:	No
Type:	AC	Prod. Type:	3735M	Elec. Spec:	37WGS136	CD Diagram:	CD0005
Enclosure:	TEFC	Mfg Plant:		Mech. Spec:	37N188	Layout:	37LYN188
Frame:	213TC	Mounting:	F1	Poles:	02	Created Date:	01-27-2015
Base:	N	Rotation:	R	Insulation:	H	Eff. Date:	09-14-2016
Leads:	9#14					Replaced By:	
Literature:		Elec. Diagram:					

Nameplate NP1953C01											
CAT.NO.	VSSEWDM3709T										
SPEC.	37N188S136G1										
HP	7.5										
VOLTS	230/460										
AMP	16.8/8.3										
RPM	3500										
FRAME	213TC					HZ	60			PH	3
SER.F.	1.15			CODE	K		DES	A		CLASS	H
NEMA-NOM-EFF	91				PF	93					
RATING	40C AMB-CONT										
CC	010A					USABLE AT 208V			19.9		
DE	6307					ODE	6307				
ENCL	TEFC			SN							

Parts List		
Part Number	Description	Quantity
SA292854	SA 37N188S136G1	1.000 EA
RA278962	RA 37N188S136G1	1.000 EA
36FN3000C02	EXFN, PLASTIC, 5.25 OD, 1.175 ID	1.000 EA
HW3200S01	EYEBOLT 3/8-16 X3/4 S.S. TDR #35988	1.000 EA
11XW1032G06	10-32 X .38, TAPTITE II, HEX WSHR SLTD U	1.000 EA
37FE1910A06	FREP TEFC 307 BRG NO GRSR W/SEAL 4X.125N	1.000 EA
RM1070A48	O-RING, .070 C.S. X 8.656 ID, VITON	1.000 EA
HW4600F34	35MM X 53MM X 4.5MM, VITON FACE SEAL	1.000 EA
HW4600F34	35MM X 53MM X 4.5MM, VITON FACE SEAL	1.000 EA
HW4500A33	1/8 NPT STAINLESS,HOLO-KROME #13002,PRES	3.000 EA
HW5100A08	W3118-035 WVY WSHR (WB)	1.000 EA
37PE1911A11	PUEP, MACH - 307 BRG WD8 (STAINLESS)	1.000 EA
RM1070A48	O-RING, .070 C.S. X 8.656 ID, VITON	1.000 EA
HW4500A33	1/8 NPT STAINLESS,HOLO-KROME #13002,PRES	3.000 EA
RM1070A47	O-RING, -011 VITON, .070 C.S. X .312 ID	4.000 EA
51XB1214A20	12-14X1.25 HXWSSLD SERTYB	1.000 EA
37FH4000A45	STAINLESS FAN COVER, NO GREASER SLOT (FO	1.000 EA
10XN1032S06	HEX HD CAP SCREW, SS	3.000 EA
36CB4517	LIPPED CB LID #304 STAINLESS - CLEANED	1.000 EA
37GS3010	1/16"WHITE LID GASKET	1.000 EA
59XN0832S07	8/32 X 7/16 HX WS HD SER X	4.000 EA
HW2502F21	#303 SS,SQ KEY 5/16 X 2.375	1.000 EA
HA7000A02	KEY RETAINER RING, 1 1/8 DIA, 1 3/8 DIA	1.000 EA
MJ5001A27	32220KN GRAY SEALER *MIN BUY 4 QTS=1GAL	0.005 QT

<b>Parts List (continued)</b>		
<b>Part Number</b>	<b>Description</b>	<b>Quantity</b>
MJ5004A37	#76732 LOCTITE ANTISEIZE THRD COMPOUND	0.005 EA
HA5027A02	HA4054 T-DRAIN X2 BAGGED WITH LABEL	1.000 EA
MJ1000A02	GREASE, POLYREX EM EXXON (USe 4824-15A)	0.050 LB
WD5603A01	KIT, CLOSED-END LEAD SPLICE (18-14GA)	1.000 EA
HA3104S14	300UBOLT 12.125LG SS	4.000 EA
G0PA1000	PKG GRP, PRINT PK1026A06	1.000 EA
MN416A01	TAG-INSTAL-MAINT no wire (1200/bx) 11/14	1.000 EA
HA5027A07	85XU1208S08 FACE DRAIN PINS BAGGED	1.000 EA

**AC Induction Motor Performance Data**

Record # 57387 - Typical performance - not guaranteed values

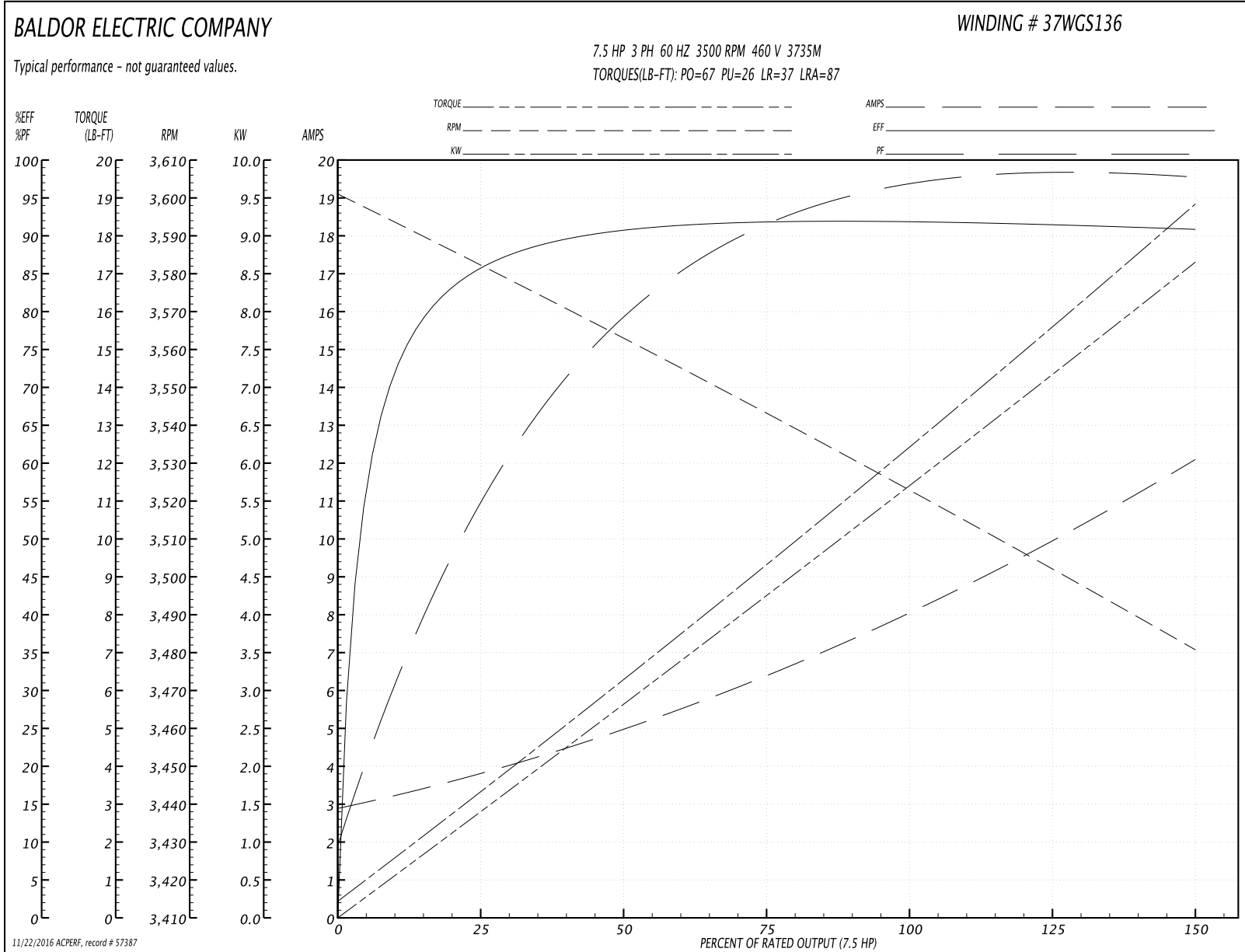
<b>Winding:</b> 37WGS136-R005	<b>Type:</b> 3735M	<b>Enclosure:</b> TEFC
-------------------------------	--------------------	------------------------

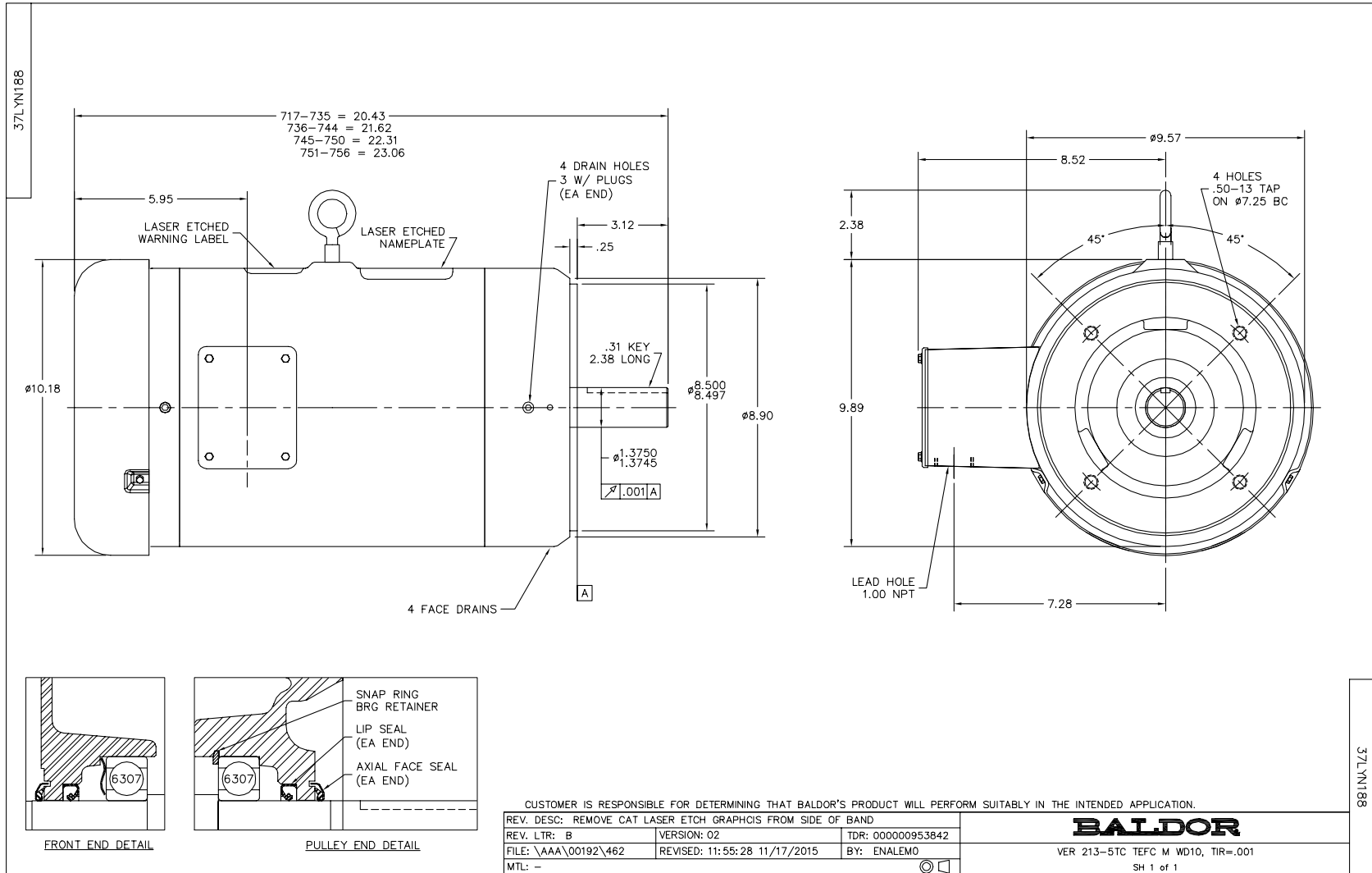
Nameplate Data				460 V, 60 Hz: High Voltage Connection	
Rated Output (HP)	7.5			Full Load Torque	11.5 LB-FT
Volts	230/460			Start Configuration	direct on line
Full Load Amps	16.8/8.3			Breakdown Torque	67 LB-FT
R.P.M.	3500			Pull-up Torque	26 LB-FT
Hz	60	Phase	3	Locked-rotor Torque	37 LB-FT
NEMA Design Code	A	KVA Code	K	Starting Current	87 A
Service Factor (S.F.)	1.15			No-load Current	3.2 A
NEMA Nom. Eff.	91	Power Factor	93	Line-line Res. @ 25°C	0.906 Ω
Rating - Duty	40C AMB-CONT			Temp. Rise @ Rated Load	47°C
S.F. Amps				Temp. Rise @ S.F. Load	57°C
				Locked-rotor Power Factor	32.4
				Rotor inertia	0.32 LB-FT <sup>2</sup>

Load Characteristics 460 V, 60 Hz, 7.5 HP

% of Rated Load	25	50	75	100	125	150	S.F.
Power Factor	62	86	90	95	95	100	95
Efficiency	84.6	90.9	92.2	91.9	91.4	90.9	91.6
Speed	3584	3564	3542	3521	3499	3483	3508
Line amperes	3.5	4.7	6.6	8.3	10.3	11.8	9.5

Performance Graph at 460V, 60Hz, 7.5HP Typical performance - Not guaranteed values





CD0005

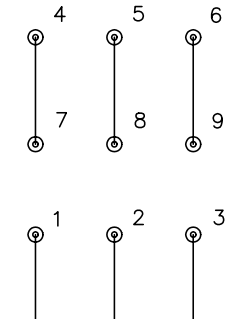


LOW VOLTAGE (2Y)



LINE

HIGH VOLTAGE (1Y)



LINE

NOTES:

1. INTERCHANGE ANY TWO LINE LEADS TO REVERSE ROTATION.
2. OPTIONAL THERMOSTATS ARE PROVIDED WHEN SPECIFIED.
3. ACTUAL NUMBER OF INTERNAL PARALLEL CIRCUITS MAY BE A MULTIPLE OF THOSE SHOWN ABOVE.
4. LEAD COLORS ARE OPTIONAL. LEADS MUST ALWAYS BE NUMBERED AS SHOWN.

REV. DESC: REVISE TO SHOW OPTIONAL COLORS			
REV. LTR: E	BY: JLP	REVISED: 01/19/99 10:15	TDR: 0171435
90000		FILE: AAA00005140	MDL: -
		MTL: -	

**BALDOR ELECTRIC Co.**

3PH, DV, 9 LEADS

CD0005