

DEF Diesel Exhaust Fluid Transfer Pump Systems

Diesel Exhaust Fluid (DEF) is for diesel engine vehicles which use Selective Catalytic Reduction (SCR) to control NOx emissions. Finish Thompson DEF Pump Systems easily, economically, and safely provide DEF transfer from a variety of containers into the vehicle's on-board storage tank. FTI DEF Pumps are designed for years of reliable service while maintaining the strict purity requirements for DEF (ISO 22241-3).

▼ EFP Series

– Economical 5 GPM Solution*

- Economical choice
- Available with a two-speed electric or air motor
- Ideal alternative to slow, troublesome hand pumps



DEF Pump Kits

Pump Kits Include:

- Pump tube matched to container size
- Choice of motor
- Sealed solution bung adapter with buttress thread
- 8-feet of Goodyear® DEF dispensing hose with stainless steel clamp
- Stainless steel automatic shutoff nozzle

Note: Individual kit components and options are also available separately. See page 2

DEF Pump Kits					
Container Size	Pump Length	Motor Type	EFP Kit	PFM Kit	SFM
5-gallon bucket	16"	115-volt electric	DEFP007	-	
		Air	DEFP008	-	
30-gallon carboy	27"	115-volt electric	DEFP008	-	
		Air	DEFP012	-	
55-gallon drum	40"	115-volt electric	DEFP009	DPFM011	DSFM029
		Air	DEFP013	DPFM012	DSFM033
275-gallon tote (IBC)	48"	115-volt electric	DEFP010	DPFM013	DSFM030
		Air	DEFP014	DPFM014	DSFM034
330-gallon tote (IBC)	54"	115-volt electric	DEFP032	-	DSFM031
		Air	DEFP033	-	DSFM035
450-gallon tote (IBC)	60"	115-volt electric			DSFM032
		Air			DSFM036

SFM Series

– High Performance 9 GPM Solution*

- Rugged, industrial quality
- Available with a variable speed 115V electric or air motor
- Integrated strainer
- Best choice for totes with smaller bunghole

PFM Series

– High Performance 10 GPM Solution*

- Rugged, industrial quality
- Available with a variable speed 115V electric or air motor
- Produces higher flows and higher pressures
- Best choice for totes

*Rates obtained with automatic nozzle.



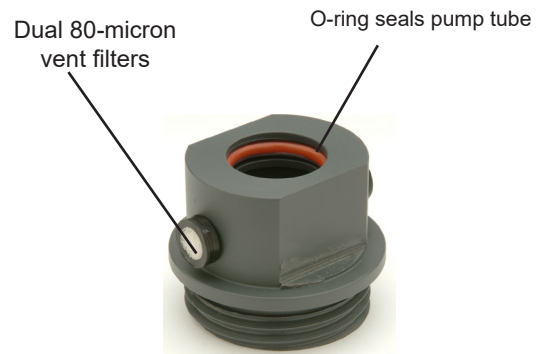
Options / Accessories

Sealed Solution Bung Adapter

Prevents dust and dirt from entering the container. Vents are easily removed for cleaning if necessary. Available in American buttress or NPT thread styles.

Note: Sealed Solution Bung Adapter included in pump kits.

Fits Model	Container Thread Type	Part Number
EFP	Buttress	107383
EFP	NPT	107384
PFM	Buttress	107418
PFM	NPT	107419
SFM	Buttress	111368
SFM	NPT	111369



Stainless Steel Nozzle

- **Stainless Steel Automatic Nozzle** with 19 mm spout. Automatically stops fluid flow when tank is full. P/N 107231



Automatic nozzle

Hose Hanger

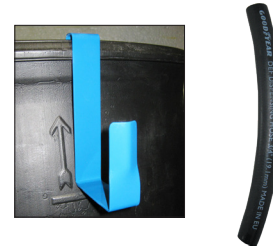
Stores hose on side of drum. Part number – 107443

Hose

EPDM hose is peroxide cured and flushed with deionized water for purity.

Part number - 8' x 3/4" ID of hose. P/N 107446

Part number - per foot, clamp not included. P/N J101756



Individual Pump Components

Build your own kit – complete pump requires pump tube and motor.

Complete the package with any of the options shown above.

Model	Description	Part Number
EF Series		
EPF-16 pump tube	16" polypropylene tube w/ 316SS shaft – 5-gallons per minute	DEFP001
EFP-27 pump tube	27" polypropylene tube w/ 316SS shaft – 5-gallons per minute	DEFP002
EFP-40 pump tube	40" polypropylene tube w/ 316SS shaft – 5-gallons per minute	DEFP003
EFP-48 pump tube	48" polypropylene tube w/ 316SS shaft – 5-gallons per minute	DEFP004
EFP-54 pump tube	54" polypropylene tube w/ 316SS shaft – 5-gallons per minute	DEFP038
S1 electric motor	1/5 hp, 115-volt, 1 phase, 60 Hz motor	107324-1
S4 air motor	Air motor w/muffler & control valve, 40 psi, 20 cfm air	107325
PFM/SFM Series		
PFM-40	40" polypropylene tube w/ 316SS shaft – 10-gallons per minute	DPFM015
PFM-48	48" polypropylene tube w/ 316SS shaft – 10-gallons per minute	DPFM016
SFM-40DEF	40" polypropylene tube w/ 316SS shaft – 9-gallons per minute	DSFM015
SFM-48DEF	48" polypropylene tube w/ 316SS shaft – 9-gallons per minute	DSFM017
M3V electric motor	1/2 hp, 115-volt, 1 phase, 60 Hz motor	106655
M6 air motor	Air motor w/muffler & control valve, 80 psi, 25 cfm	A100007

Note: Above PFM pumps have a 3/4" barb fitting for use with EPDM hose.

Other DEF dispensing options available. Contact FTI for more information.



FINISH THOMPSON INC.

921 Greengarden Road • Erie, PA 16501-1591 U.S.A.
Ph 814-455-4478 • Fax 814-455-8518
Email fti@finishthompson.com • www.finishthompson.com

Literature ID No. FT09-1101 8.11.11
Toll Free US & Canada 1-800-934-9384

Order Online: www.PumpCatalog.com