

---

**e-SV** REPAIR PARTS

---

### Table of Contents

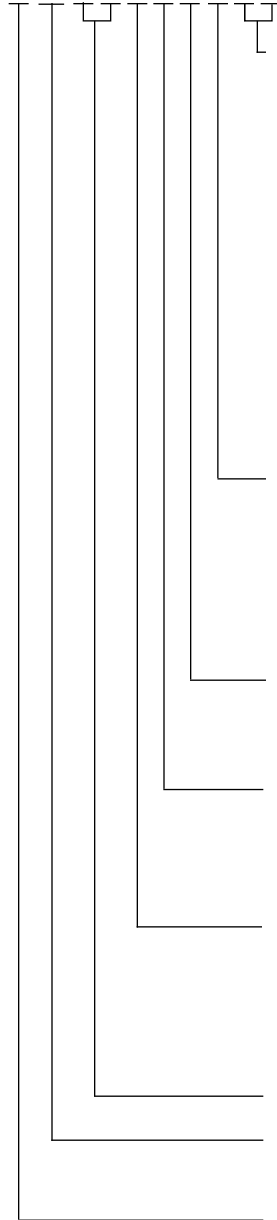
Numbering System for 1 - 22SV Liquid End Only . . . . .	3
Numbering System for 33 - 125SV Liquid End Only . . . . .	4
Numbering System for 1 - 22SV Pump & Motor Combination . . . . .	5
Numbering System for 33 - 125SV Pump & Motor Combination . . . . .	6
Numbering System for 1 - 22SV Repair Stack . . . . .	7
Numbering System for 33 - 125SV Repair Stack . . . . .	8
1 - 125SV Impellers and Intermediate Bearings Layout . . . . .	9
Coupling Tables . . . . .	10
Motor Adapter . . . . .	11
Major Components 1SV - 22SV . . . . .	12-13
Major Components 33SV - 92SV . . . . .	14-15
Major Components 125SV . . . . .	16-17
Shafts . . . . .	18
Casings . . . . .	19-20
Tie Rods . . . . .	21-22
Low NPSH Conversion Kits . . . . .	22
Horizontal Mounting . . . . .	23

### e-SV Product Line Numbering System for 1 - 22SV Liquid End Only

The various versions of the e-SV line are identified by a product code number on the pump label. This number is also the catalog number for the pump. The meaning of each digit in the product code number is shown below. Note: Not all combinations are possible.

#### Example Product Code

22 SV 0 2 F E 3 0



#### Special Configurations (optional Characters)

- A = Cooling Chamber only
- B = Cooling Chamber + Passivation
- C = Cooling Chamber + Low NPSH
- F = Destaged - 1 stage
- G = Destaged - 2 stage
- H = Horizontal mount only
- J = Horizontal mount + Passivation
- K = Horizontal mount + Low NPSH
- L = Horizontal mount + High Pressure
- N = Low NPSH only
- P = Passivation only
- Z = High pressure only

#### Seal Material

- 0 = Carb-SilCar-Viton (Standard)
- 1 = Carb-SilCar-AFLAS (HighTemp)
- 2 = SilCar-SilCar-Viton
- 4 = SilCar-SilCar-EPR
- 6 = Carb-SilCar-EPR

#### Pole-Hz

- 1 = 2-50      3 = 2-60
- 2 = 4-50      4 = 4-60

#### Motor Frame (NEMA)

- A = 56C      D = 250TC
- B = 180TC    E = 280TC
- C = 210TC

#### Configuration

- C = Clamp-316      P = Victaulic-316
- F = Round-304 (SVB)    T = Oval-304 (SVA)
- G = CI-304
- N = Round-316 (SVD)

	Top / Bottom
R =	(SVC) 12Suct-12Disch
W =	(SVC) 12Suct-03Disch
X =	(SVC) 12Suct-06Disch
Y =	(SVC) 12Suct-09Disch

Suction discharge location

#### Total Number of Impeller Stages (may be 1 or 2 characters)

#### Product Line:

SV - Stainless Vertical

#### Nominal Flow:

- 1 = 5 GPM      10 = 53 GPM
- 3 = 16 GPM    15 = 80 GPM
- 5 = 26 GPM    22 = 116 GPM

### e-SV Product Line Numbering System for 33 - 125SV Liquid End Only

The various versions of the e-SV line are identified by a product code number on the pump label. This number is also the catalog number for the pump. The meaning of each digit in the product code number is shown below. Note: Not all combinations are possible.

#### Example Product Code

125 SV 8 1 2 B F E 2 0

#### Special Configurations (optional Characters)

- F = Destaged - 1 stage (33 and 46 only)
- G = Destaged - 2 stage (33 and 46 only)
- H = Horizontal mount only
- J = Horizontal mount + Passivation
- K = Horizontal mount + Low NPSH (33, 46 and 66 only)
- L = Horizontal mount + High Pressure
- N = Low NPSH only (33, 46 and 66 only)
- Z = High pressure (250/300# pump body)

#### Seal Material

- 0 = Carb-SilCar-Viton
- 2 = SilCar-SilCar-Viton
- 4 = SilCar-SilCar-EPR
- 6 = Carb-SilCar-EPR
- 7 = Carb-SilCar-Viton (Cart)
- 8 = SilCar-SilCar-EPR (Cart)

#### Pole-Hz

- 1 = 2-50      3 = 2-60
- 2 = 4-50      4 = 4-60

#### Motor Frame (NEMA)

- B = 180TC      E = 280TC
- C = 210TC      F = 320TSC
- D = 250TC      G = 360TSC

#### Configuration

- G = Round-CI-304
- N = Round-316

#### 125SV ONLY

**Reduced Trim Diameter**  
**Blank if 33-92SV**

A = 141 mm

B = 136 mm

C = 145 mm (full dia.)

#### Number of Reduced Trim Impellers

#### Total Number of Impellers/Stages

**Product Line:** SV - Stainless Vertical

#### Nominal Flow:

- 33 = 175 GPM
- 46 = 240 GPM
- 66 = 350 GPM
- 92 = 485 GPM
- 125 = 660 GPM

### e-SV Product Line Numbering System for 1 - 22SV Pump & Motor Combination

The various versions of the e-SV line are identified by a product code number on the pump label. This number is also the catalog number for the pump. The meaning of each digit in the product code number is shown below. Note: Not all combinations are possible.

#### Example Product Code

2 SV 2 2 F A 2 F 5 1 A H

#### Special Configurations (1 or 2 Characters)

- |                                    |                                      |
|------------------------------------|--------------------------------------|
| A = Cooling Chamber only           | K = Horizontal mount + Low NPSH      |
| B = Cooling Chamber + Passivation  | L = Horizontal mount + High Pressure |
| C = Cooling Chamber + Low NPSH     | M = i-Alert                          |
| F = Destaged - 1 stage             | N = Low NPSH only                    |
| G = Destaged - 2 stage             | P = Passivation only                 |
| H = Horizontal mount only          | Z = High Press (250/300# pump body)  |
| J = Horizontal mount + Passivation |                                      |

#### Seal Material

- |                                  |                       |
|----------------------------------|-----------------------|
| 0 = Carb-SilCar-Viton            | 4 = SilCar-SilCar-EPR |
| 1 = Carb-SilCar-AFLAS (HighTemp) | 6 = Carb-SilCar-EPR   |
| 2 = SilCar-SilCar-Viton          |                       |

#### Motor Enclosure

- |                   |               |                   |
|-------------------|---------------|-------------------|
| 1 = ODP           | 5 = Prem-ODP  | 9 = Marine        |
| 2 = TEFC          | 6 = Prem-TEFC | A = Chem          |
| 3 = X-Proof       | 7 = Prem-XP   | B = Prem-Chem     |
| 4 = WD - Tropical | 8 = Prem-WD   | C = Class 1 Div 2 |

#### Voltage

- |                 |                 |                     |
|-----------------|-----------------|---------------------|
| A = 115/230     | H = 190/380     | R = 220             |
| B = 230         | J = 115/208-230 | S = 415             |
| C = 230/460     | K = 208         | T = 220/380 WYE     |
| D = 460         | L = 208-230     | U = 380-660 WYE     |
| E = 575         | M = 190-380/415 | V = 208-230/460 WYE |
| F = 208-230/460 | N = 380         |                     |
| G = 200         | P = 110/220     |                     |

#### Pole-Hz-Phase

- |            |            |            |
|------------|------------|------------|
| 1 = 2-50-1 | 4 = 2-60-3 | 7 = 4-60-1 |
| 2 = 2-50-3 | 5 = 4-50-1 | 8 = 4-60-3 |
| 3 = 2-60-1 | 6 = 4-50-3 |            |

#### HP Rating

- |          |         |        |
|----------|---------|--------|
| A = 0.50 | F = 3   | L = 20 |
| B = 0.75 | G = 5   | M = 25 |
| C = 1.00 | H = 7.5 | N = 30 |
| D = 1.50 | J = 10  | P = 40 |
| E = 2    | K = 15  |        |

#### Configuration OPTION

- |                     |     |                      |
|---------------------|-----|----------------------|
| C = Clamp-316       |     |                      |
| F = Round-304 (SVB) | R = | (SVC) 12Suct-12Disch |
| G = CI-304          | W = | (SVC) 12Suct-03Disch |
| N = Round-316 (SVD) | X = | (SVC) 12Suct-06Disch |
| P = Victaulic-316   | Y = | (SVC) 12Suct-09Disch |
| T = Oval-304 (SVA)  |     |                      |
- Top / Bottom
- Suction discharge location

#### Total Number of Impeller Stages (may be 1 or 2 characters)

#### Product Line:

SV - Stainless Vertical

#### Nominal Flow:

- |            |             |              |
|------------|-------------|--------------|
| 1 = 5 GPM  | 5 = 26 GPM  | 15 = 80 GPM  |
| 3 = 16 GPM | 10 = 53 GPM | 22 = 116 GPM |

### e-SV Product Line Numbering System for 33 - 125SV Pump & Motor Combination

The various versions of the e-SV line are identified by a product code number on the pump label. This number is also the catalog number for the pump. The meaning of each digit in the product code number is shown below. Note: Not all combinations are possible.

#### Example Product Code

125SV 8 2 A G K 3 F 2 0

#### Special Configurations (1 or 2 Characters)

F = Destaged - 1 stage (33 and 46 only)	L = Horizontal mount + High Pressure
G = Destaged - 2 stage (33 and 46 only)	M = i-Alert
H = Horizontal mount only	N = Low NPSH only (33, 46 and 66 only)
J = Horizontal mount + Passivation	P = Passivation only
K = Horizontal mount + Low NPSH	Z = High Press (250/300# pump body/Casing)

#### Seal Material

0 = Carb-SilCar-Viton	6 = Carb-SilCar-EPR
2 = SilCar-SilCar-Viton	7 = Carb-SilCar-Viton (Cart)
4 = SilCar-SilCar-EPR	8 = SilCar-SilCar-EPR (Cart)

#### Motor Enclosure

1 = ODP	5 = Prem-ODP	9 = Marine
2 = TEFC	6 = Prem-TEFC	A = Chem
3 = X-Proof	7 = Prem-XP	B = Prem-Chem
4 = WD - Tropical	8 = Prem-WD	C = Class 1 Div 2

#### Voltage

A = 115/230	H = 190/380	R = 220
B = 230	J = 115/208-230	S = 415
C = 230/460	K = 208	T = 220/380 WYE
D = 460	L = 208-230	U = 380-660 WYE
E = 575	M = 190-380/415	V = 208-230/460 WYE
F = 208-230/460	N = 380	
G = 200	P = 110/220	

#### Pole-Hz-Phase

1 = 2-50-1	4 = 2-60-3	7 = 4-60-1
2 = 2-50-3	5 = 4-50-1	8 = 4-60-3
3 = 2-60-1	6 = 4-50-3	

#### HP Rating

F = 3	L = 20	R = 50
G = 5	M = 25	S = 60
H = 7.5	N = 30	T = 75
J = 10	P = 40	U = 100
K = 15		

#### Configuration

G = Round-CI-304	N = Round-316
------------------	---------------

#### 125SV ONLY

**Reduced Trim Diameter**      A = 141 mm      B = 136 mm      C = 145 mm (full dia.)  
**Blank if 33-92SV**

#### Number of Reduced Trin Impeller

#### Total Number of Impeller Stages (may be 1 or 2 characters)

#### Product Line:

SV - Stainless Vertical

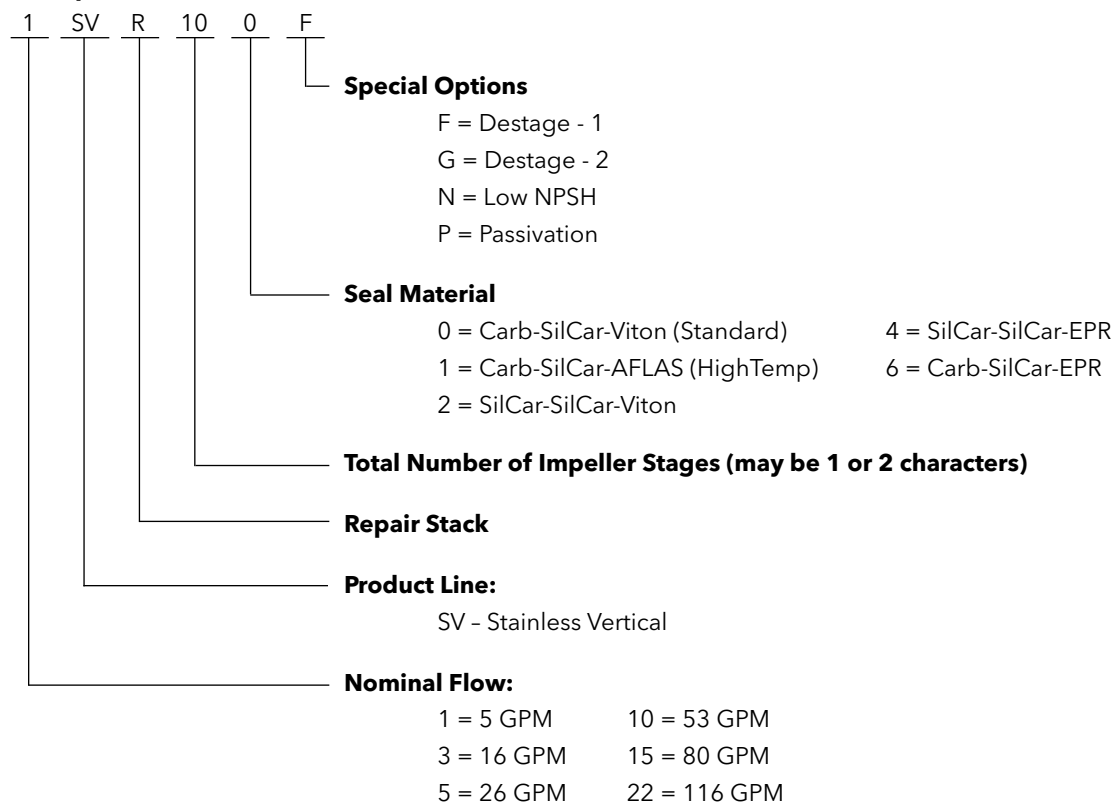
#### Nominal Flow:

33 = 175 GPM	66 = 350 GPM	125 = 660 GPM
46 = 240 GPM	92 = 485 GPM	

### e-SV Product Line Numbering System for 1 - 22SV Repair Stack

The various versions of the e-SV line are identified by a product code number on the pump label. This number is also the catalog number for the pump. The meaning of each digit in the product code number is shown below. Note: Not all combinations are possible.

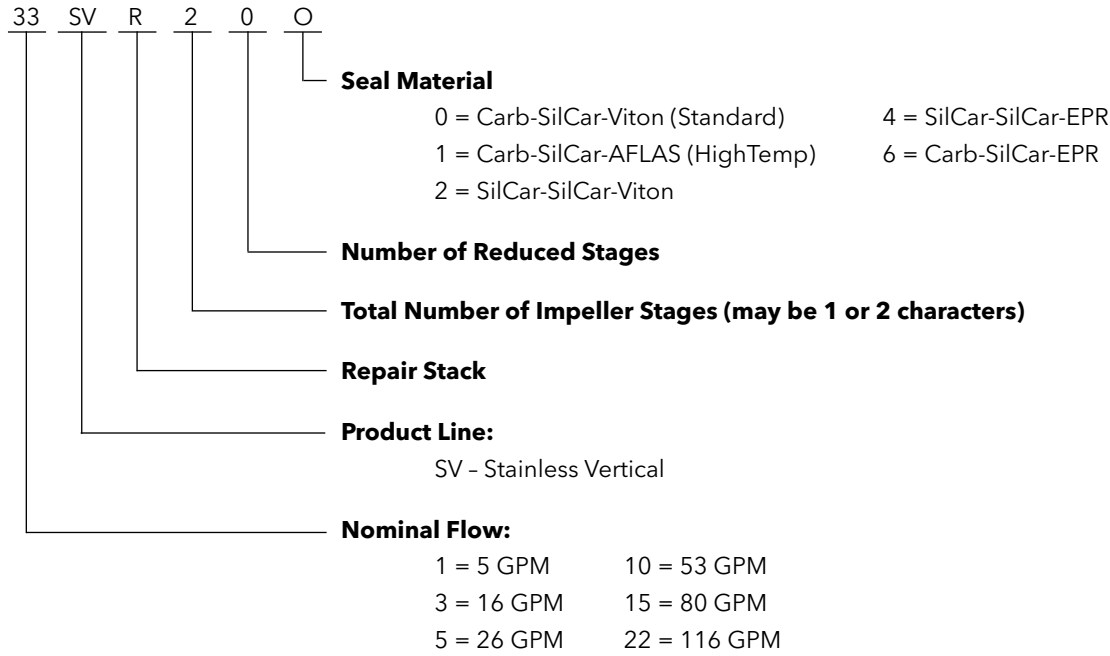
#### Example Product Code



### e-SV Product Line Numbering System for 33 - 125SV Repair Stack

The various versions of the e-SV line are identified by a product code number on the pump label. This number is also the catalog number for the pump. The meaning of each digit in the product code number is shown below. Note: Not all combinations are possible.

#### Example Product Code

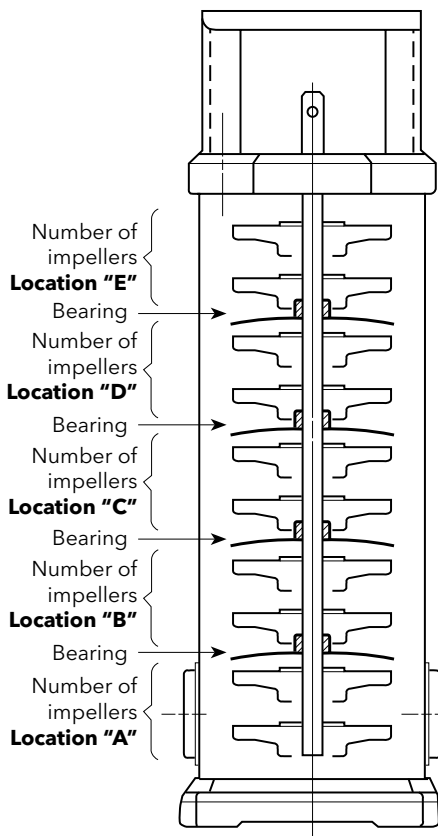




### e-SV Product Line

### 1 - 125SV Impellers and Intermediate Bearings Layout

Stages	1SV					3SV					5SV					10SV				15SV				22SV					
	Number of Bushings	A	B	C	D	E	Number of Bushings	A	B	C	D	E	Number of Bushings	A	B	C	D	E	Number of Bushings	A	B	C	D	Number of Bushings	A	B	C	D	
1																													
2		1	1				1	1					1	1						1	1				1	1			
3		1	2				1	2					1	2						1	2				1	2			
4		1	3				1	3					1	3						1	3				1	3			
5		1	4				1	4					1	4						1	4				1	4			
6		2	4				2	4					2	4						2	4				2	4			
7		2	5				2	5					2	5						2	5				2	5			
8		2	6				2	6					2	6						2	6				2	6			
9		2	7				2	7					2	7						2	7				2	7			
10		2	8				2	8					2	8						2	8				2	8			
11		2	6	3			2	6	3				2	6	3					2	6	3			2	6	3		
12		2	7	3			2	7	3				2	7	3					2	7	3			2	7	3		
13		2	7	4			2	7	4				2	7	4					2	7	4			2	7	4		
14		2	8	4			2	8	4				2	8	4					2	8	4			2	8	4		
15		2	9	4			2	9	4				2	9	4					2	9	4			2	9	4		
16		2	9	5			2	9	5				2	9	5					2	9	5			2	9	5		
17		2	10	5			2	10	5				2	10	5					2	10	5			2	10	5		
18		2	10	6			2	10	6				2	10	6					2	10	6			2	10	6		
19		2	10	7			2	10	7				2	10	7					2	10	7			2	10	7		
20		2	11	7			2	11	7				2	11	7					2	11	7			2	11	7		
21		2	7	7	5		2	7	7	5			2	7	7	5				2	7	7	5		2	7	7	5	
22		2	8	7	5		2	8	7	5			2	8	7	5				2	8	7	5		2	8	7	5	
23		2	8	8	5		2	8	8	5			2	8	8	5				2	8	8	5		2	8	8	5	
24		2	9	8	5		2	9	8	5			2	9	8	5				2	9	8	5		2	9	8	5	
25		2	9	9	5		2	9	9	5			2	9	9	5				2	9	9	5		2	9	9	5	
26		2	9	9	6		2	9	9	6			2	9	9	6				2	9	9	6		2	9	9	6	
27		2	10	9	6		2	10	9	6			2	10	9	6				2	10	9	6		2	10	9	6	
28		2	7	7	7	5	2	7	7	7	5		2	7	7	7	5			2	7	7	7	5	2	7	7	7	5
29		2	8	7	7	5	2	8	7	7	5		2	8	7	7	5			2	8	7	7	5	2	8	7	7	5
30		2	8	8	7	5	2	8	8	7	5		2	8	8	7	5			2	8	8	7	5	2	8	8	7	5



Stages	33SV			46SV			66SV			92SV			125SV			
	Number of Bushings	A	B	Number of Bushings	A	B	Number of Bushings	A	Number of Bushings	A	Number of Bushings	A	B	C	D	
1																
2																
3												1				
4												2				
5								1			2					
6										1	3					
7											3					
8																
9																
10																

The chart on this page is used to locate the correct bearing position(s) on the impeller stack of the e-SV series pumps. To use this chart:

1. Locate the number of stages in the left hand column of the above chart which corresponds to the pump you are working on.
2. Follow the selected row across to the pump size (1SV etc).
3. Under the "A" location, you will find the number of impellers on the bottom of the stack which come before the first bearing.
4. Under the "B" location, you will find the number of impellers which go above the first bearing and below the second bearing (if there is one).
5. Under the "C" location, you will find the number of impellers which go above the second bearing and below the third bearing (if there is one).
6. Under the "D" location, you will find the number of impellers which go above the third bearing.
7. Under the "E" location, you will find the number of impellers which go above the fourth bearing.

### e-SV Product Line Coupling Tables

Coupling Table - includes nuts, bolts and pin								
	56C	140TC	180TC	210TC	250TC	280TC	320TSC	360TSC
1SV	7K3333	7K3334	7K3335	7K3336	7K3337			
3SV								
5SV								
10SV	7K3338	7K3339	7K3340	7K3341	7K3342	7K3343		
15SV								
22SV								
33SV			4L553	4L554	4L555	4L556		
46SV								
66SV								
92SV								
125SV								

Coupling Guard Table - includes screws								
	56C	140TC	180TC	210TC	250TC	280TC	320TSC	360TSC
1SV	4K1006			4K1007				
3SV								
5SV								
10SV	4K1008			4K1009				
15SV								
22SV								
33SV						4L515		
46SV								
66SV								
92SV								
125SV								

Size	Coupling Pin Repair Part Number
1SV	4L170
3SV	
5SV	
10SV	4L171
15SV	
22SV	
33SV	4L83
46SV	
66SV	
92SV	
125SV	

## Commercial Water

### e-SV Product Line Motor Adapter

Model	Part	56C	140TC	180TC	210TC	250TC	280TC	320TSC	360TSC					
15V	Motor Adapter	1K702		1K703										
	Adapter Ring				1K706	1K707								
	Motor Hex Cap Screw	13K194		13K93'	13K435	13L40								
	Seal Gland O-Ring	5K516												
35V	Motor Adapter	1K702		1K703										
	Adapter Ring				1K706	1K707								
	Motor Hex Cap Screw	13K194		13K93'	13K435	13L40								
	Seal Gland O-Ring	5K516												
55V	Motor Adapter	1K702		1K703										
	Adapter Ring				1K706	1K707								
	Motor Hex Cap Screw	13K194		13K93'	13K435	13L40								
	Seal Gland O-Ring	5K516												
105V	Motor Adapter	1K704		1K705										
	Adapter Ring				1K706	1K707	1K708							
	Motor Hex Cap Screw	13K194		13K93'	13K435	13L40	13K93*							
	Seal Gland O-Ring	5K516												
155V	Motor Adapter	1K704		1K705										
	Adapter Ring				1K706	1K707	1K708							
	Motor Hex Cap Screw	13K194		13K93'	13K435	13L40	13K93*							
	Seal Gland O-Ring	5K516												
225V	Motor Adapter	1K704		1K705										
	Adapter Ring				1K706	1K707	1K708							
	Motor Hex Cap Screw	13K194		13K93'	13K435	13L40	13K93*							
	Seal Gland O-Ring	5K516												
335V	Motor Adapter			1L649										
	Motor Adapter Plate							1L646	1L647	1L648				
	Motor Hex Cap Screw			13K104			13K44 or 13K245	13K44 or 13K247	13K44 or 13K247					
	Motor Adapter Hex Cap Screw	13L127												
465V	Motor Adapter			1L649										
	Motor Adapter Plate							1L646	1L647	1L648				
	Motor Hex Cap Screw			13K104			13K44 or 13K245	13K44 or 13K247	13K44 or 13K247					
	Motor Adapter Hex Cap Screw	13L127												
665V	Motor Adapter			1L649										
	Motor Adapter Plate							1L646	1L647	1L648				
	Motor Hex Cap Screw			13K104			13K44 or 13K245	13K44 or 13K247	13K44 or 13K247					
	Motor Adapter Hex Cap Screw	13L127												
925V	Motor Adapter			1L649										
	Motor Adapter Plate							1L646	1L647	1L648				
	Motor Hex Cap Screw			13K104			13K44 or 13K245	13K44 or 13K247	13K44 or 13K247					
	Motor Adapter Hex Cap Screw	13L127												
1255V	Motor Adapter			1L649										
	Motor Adapter Plate							1L646	1L647	1L648				
	Motor Hex Cap Screw			13K104			13K44 or 13K245	13K44 or 13K247	13K44 or 13K247					
	Motor Adapter Hex Cap Screw	13L127												

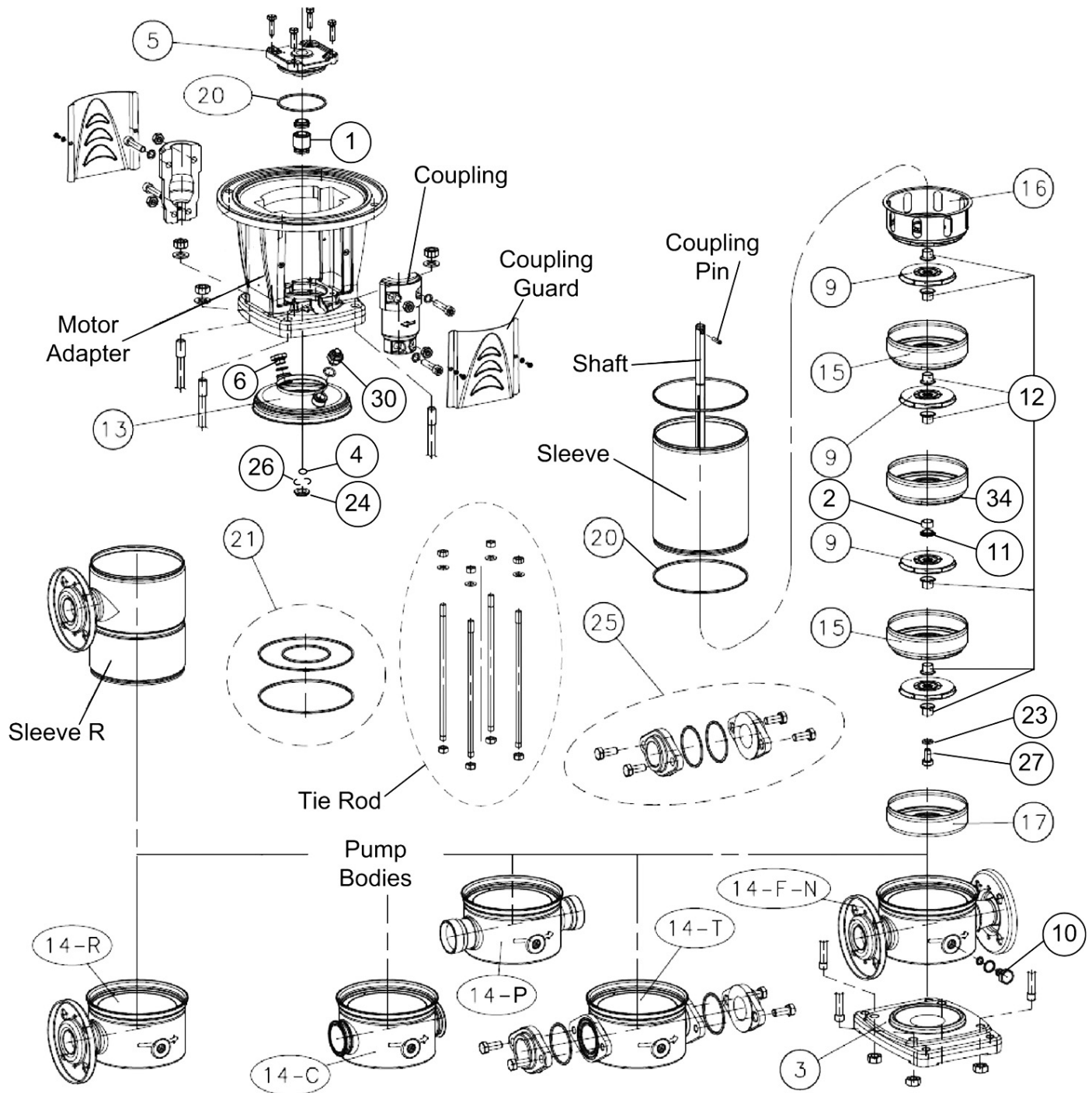
' QTY 4 Required

\* QTY 8 Required

## Commercial Water

### e-SV Product Line

### Major Components 1SV - 22SV



## Commercial Water

### e-SV Product Line Major Components 1SV - 22SV

Miscellaneous Parts							
Item Number	Part Name	1SV	3SV	5SV	10SV	15SV	22SV
2	Shaft Bushing (Bearing)		4L602			4L603	
20	Sleeve O-Ring		5K510 Viton Qty 2 5L88 EPDM Qty 2			5L89 EPDM Qty 1 5K511 Viton Qty 1	
5	Seal Gland		1K669			1K701	
20	Seal Gland O-Ring		5K516 Viton Qty 1 5L512 EPDM Qty 1				
13	Upper Pressed Holder		1L842			1L844	
4	Seal Washer		13L107			13L108	
24	Impeller Locking Cover		4K1025			4K1026	
26	Half Stop Ring		4L245			4L246	
12	Impeller Spacer	4L593		4L594	4L597		4L599
16	Final Diffuser	3L71		3L73	3L75		3L77
	Blank Final Diffuser		3L86			3L87	
15	Diffuser	3L55		3L57	3L59		3L61
34	Diffuser w/ Bushing (Bearing)	3L63		3L65	3L67		3L69
34	Blank Diffuser	3L92		3L93	3L94		3L95
9	Impeller	2L917	2L919	2L921	2L923	2L925	2L927
-	Impeller Substituion Spacer*	4K1021		4K1022	4K1023		4K1024
11	Bushing Spacer	4K1028		4K1004	4K1005		4L601
17	Initial Stage	3L79		3L81	3L83		3L85
23	Initial Stage Washer		13L105			13L106	
27	Impeller Stack Screw		13L95			13L96	
-	Tie Rod Nuts Qty 4		13L98 Qty 1			13K428 Qty 4	
-	Tie Rod Washers Qty 4		13L100 Qty 4			13L21 Qty 1	
25	T Config Counter Flange		6L30			6L57	
-	Coupling Shim			4L242			
-	Fill Funnel			4L247			
21	Complete O-Ring Kit		5K517 Viton 5K518 EPDM			5K519 Viton 5K520 EPDM	

\* Used in place of impeller when pump is destaged.

Pump Bodies							
Item Number	Flange Connection	1SV	3SV	5SV	10SV	15SV	22SV
14	F	1L656			1L661		
	N	1L657			1L662		
	G	1L664			1L665		
	R,W,X,Y	1L658			1L663		
	T	1L655			1L659		
	P	1L840			1L660		
	C	1L850			1L851		
Pump Bases							
Item Number	Flange Connection	1SV	3SV	5SV	10SV	15SV	22SV
3	F						
	N						
	R,W,X,Y		1K710			1K712	
	C						
	T						
	P		1K709			1K711	
G					N/A		
Mechanical Seals *							
Item Number	Seal Type	1SV	3SV	5SV	10SV	15SV	22SV
1	0 Seal Car/SilCar/Viton	10K168			10K169		
	1 Seal Car/SilCar/AFLAS	10K218			10K219		
	2 Seal SilCar/SilCar/Viton	10K172			10K173		
	4 Seal SilCar/Silcar/EPDM	10K174			10K175		
	6 Seal Car/Silcar/EPDM	10K170			10K171		

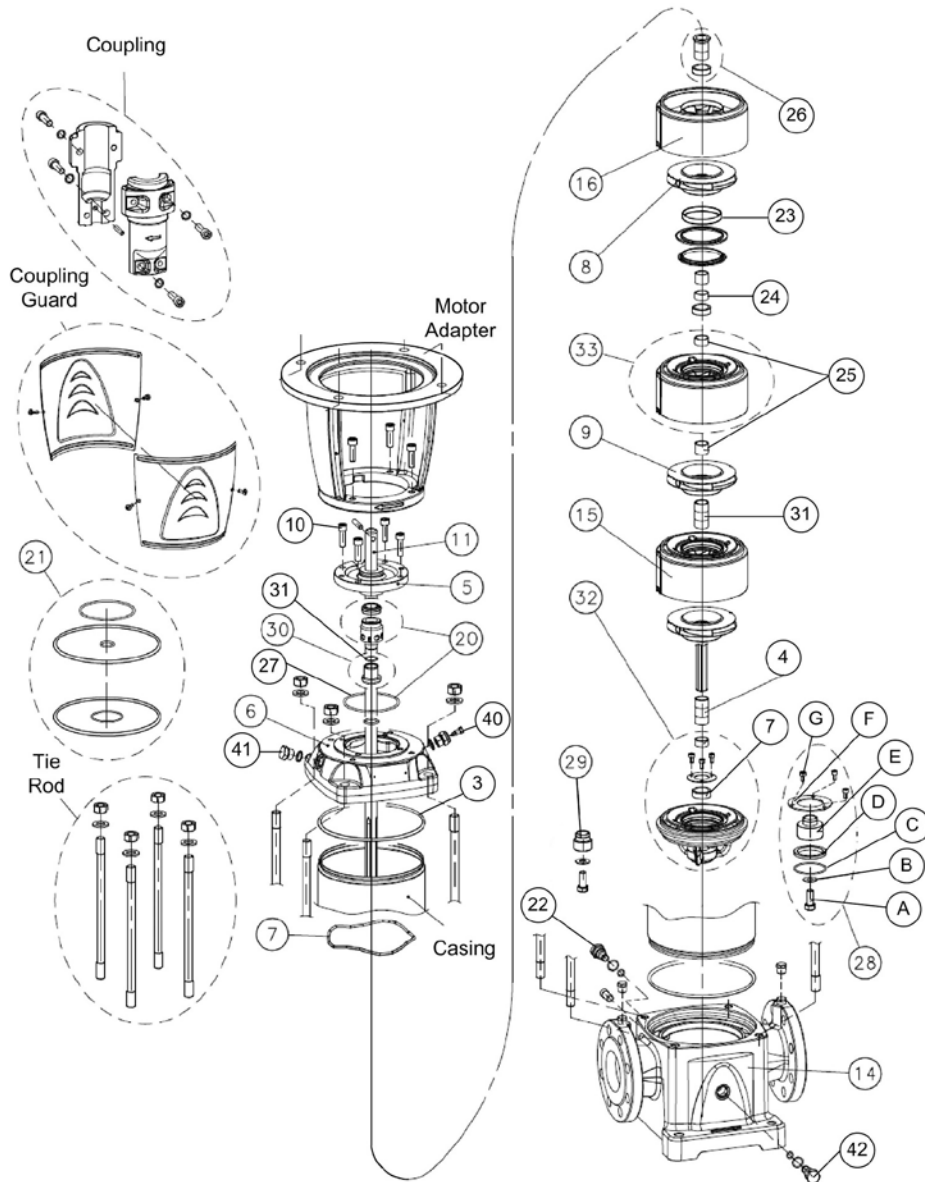
\* Seal Kits contain (1) seal gland o-ring and (2) casing o-rings.

Vent Plug with O-Ring							
Item Number	Elastomer Type	1SV	3SV	5SV	10SV	15SV	22SV
30	Viton				6L19		
	EPDM				6L55		
Fill Plug with O-Ring							
Item Number	Elastomer Type	1SV	3SV	5SV	10SV	15SV	22SV
6	Viton				6L60		
	EPDM				6L59		
Drain Plug with O-Ring							
Item Number	Elastomer Type	1SV	3SV	5SV	10SV	15SV	22SV
10	Viton			6L17		6L18	
	EPDM			6L23		6L24	
Opt. Victaulic Mating Components							
	Victaulic Coupling		4L194			4L195	
	Victaulic Threaded Coupling		4L196			4L197	
Replacement O-Ring for Oval Flange							
		1SV	3SV	5SV	10SV	15SV	22SV
			5K415			5L108	
¾" BSP with ¼" NPT Plug Connection							
4K537							

## Commercial Water

### e-SV Product Line

### Major Components 33SV - 92SV



#### Pump Bodies

Item Number	Flange Connection	33SV	46SV	66SV	92SV
14	G Class 125	1L640	1L642		1L644
	G Class 250	1L641	1L643		1L645
	N Class 150	1L634	1L636		1L638
	N Class 300	1L635	1L637		1L639

#### Mechanical Seals

Item Number	Seal Type	33SV	46SV	66SV	92SV
20	0 Seal Car/SilCar/Viton			10L38	
	2 Seal SilCar/SilCar/Viton			10L39	
	4 Seal SilCar/SilCar/EPR			10L37	
	6 Seal Car/SilCar/EPR			10L40	
	7 Cartridge Seal Car/SilCar/Viton			10K163	
	8 Cartridge Seal SilCar/SilCar/EPDM			10K166	

#### Vent Plug w/ O-Ring

Item Number	Elastomer Type	33SV	46SV	66SV	92SV
40	Viton			6L53	
	EPDM			6L49	

#### Fill Plug w/ O-Ring

Item Number	Elastomer Type	33SV	46SV	66SV	92SV
41	Viton			6L52	
	EPDM			6L48	

#### Drain Plug w/ O-Ring

Item Number	Elastomer Type	33SV	46SV	66SV	92SV
42	Viton			6L54 (qty. 2)	
	EPDM			6L50 (qty. 2)	

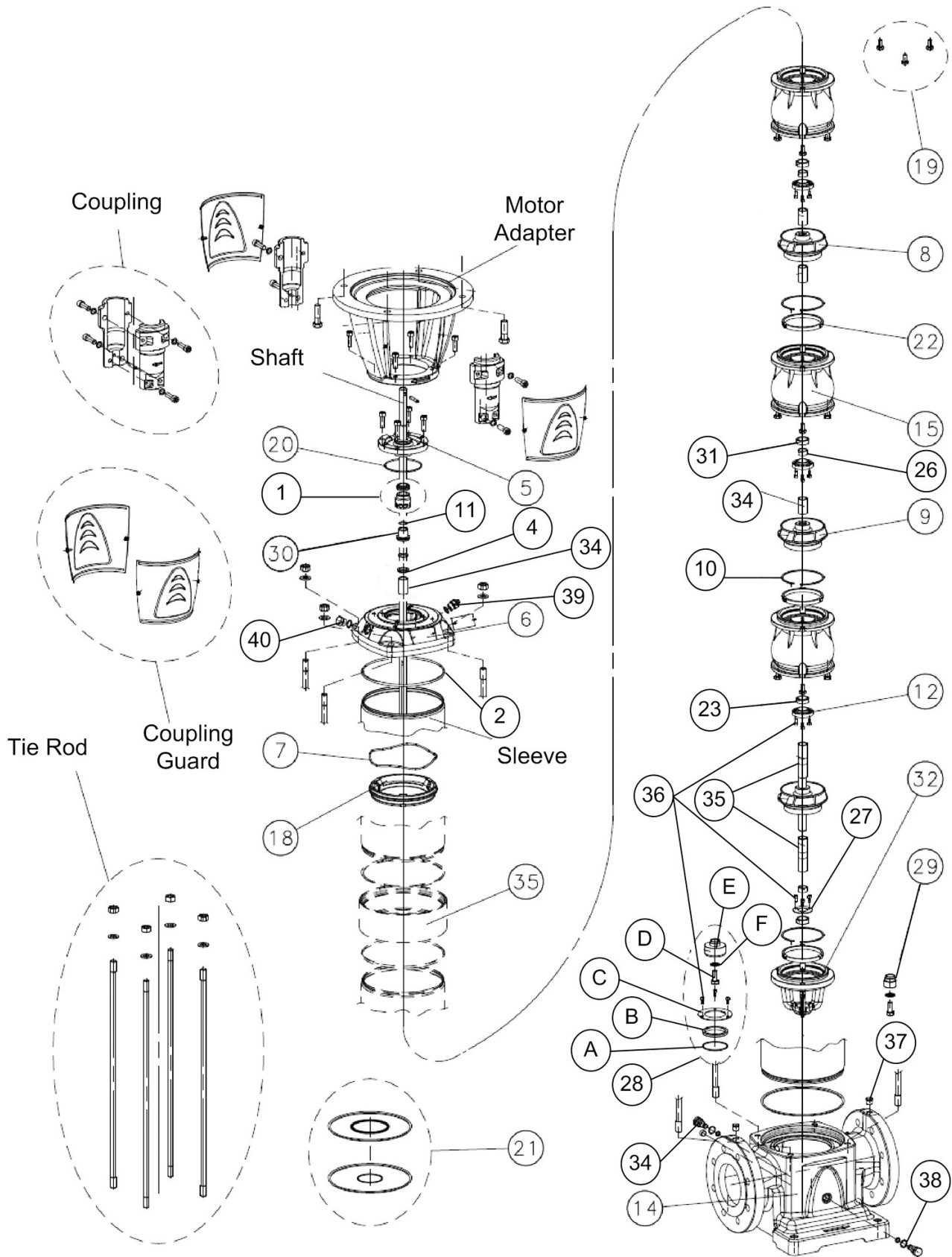
## Commercial Water

### e-SV Product Line Major Components 33SV - 92SV

Miscellaneous Parts					
Item Number	Part Name	33SV	46SV	66SV	92SV
6	Pump Head - G	1L632		1L633	
	Pump Head - N	1L630		1L631	
5	Seal Housing - G	1L629			
	Seal Housing - N	1L628			
10	Seal Housing Screw	13L127 (qty.4)			
28A	Impeller Bolt	13L109			
28B	Impeller Washer	13L129			
26	Final Spacer	4L509			
31	Impeller Spacer	4L511			
4	Lower Impeller Spacer	-	-	4L512	
30	Mechanical Seal Shaft Sleeve	4L531			
31	Impeller Stop Ring	4L550			
7	Diffuser Spring	4L551		4L552	
16	Final Stage Diffuser	3L42		3L43	
15	Carbon Bearing Diffuser	3L44	3L45	3L46	3L47
33	Tungsten Carbide Diffuser	3L48	3L49	3L50	3L51
25	Shaft Bushing Spacer	4L510 (qty.2)			
24	Tungsten Carbide Bushing	4L514			
23	Impeller/Diffuser Wear Ring (qty. 5)	15L47	15L48	15L49	15L50
32	Lower Bracket Assembly - G	15L39	15L40	15L41	15L42
	Lower Bracket Assembly - N	15L35	15L36	15L37	15L38
28	Complete Thrust Piston Assembly	15K51	15K52	15K53	
28E	Piston	4L494	4L495	4L496	
28D	Piston Seal	4L547	4L548	4L549	
28F	Retaining Plate	4L506	4L507	4L508	
22	Plug, 33-92SV w/piston	6L47			
28G	Hex Cap Screws	13L114 (qty. 3)			
7	Tungsten Carbide Bushing	4L514			
-	Complete Non-Piston Assembly	15K54			
29	Impeller Stack Bushing	4I513			
22	Plug, 33-92SV w/o Piston	6L51			
9	Full Diameter Impeller	2L899	2L900	2L901	2L902
8	Reduced Diameter Impeller	2L903	2L904	2L905	2L906
-	Tie Rod Washer	13K307			
-	Tie Rod Hex Nut	13K366			
-	Shim Fork	4L242			
21	Complete O-Ring Kit - EPDM	5K374	5K375	5K378	
	Complete O-Ring Kit - Viton	5K376	5K377	5K379	
27	Seal Housing O-Ring	5K404 Viton 5K390 EPDM			
-	Mech. Seal Sleeve O-Ring	5K401 Viton 5K387 EPDM			
3	Casing O-Ring	5K407 Viton 5K393 EPDM		5K408 Viton 5K394 EPDM	
28C	Piston O-Ring	5K398 Viton 5K384 EPDM	5K399 Viton 5K385 EPDM	5K400 Viton 5K386 EPDM	

## Commercial Water

### e-SV Product Line Major Components 125SV





## Commercial Water

### e-SV Product Line Major Components 125SV

Item Number	Part Name	125SV	
		304	316
28D	Piston	4L496	
28B	Piston Gasket	4L549	
28A	Piston O-Ring	5K400 Viton 5K386 EPDM	
28C	Piston Seal Holder	4L508	
34	Piston Hole Plug	6L51	
2	Sleeve O-Ring	5K408 Viton 5K394 EPDM	
5	Seal Housing	1L629	1L628
20	Seal Gland O-Ring	5K404 Viton 5K390 EPDM	
10	Diffuser Wear Ring Support	4L624	4K1011
7	Diffuser Stack Spring	4L552	
6	Upper Head	1L633	1L631
30	Mechanical Seal Bushing	4L531	4L672
26	Shaft Bushing Tung. Carb.	4L514	
11	Impeller Stop Ring	4L550	
31	Bushing Carb. Tung.	4L514	
20	Seal O-Ring	5K401 Viton 5K387 EPDM	
27	Bearing Holder	4L660	
23	Diffuser Bushing	4L666	
18	Adapter Ring	1K715	1K716
15	Diffuser	3K81	3K82
22	Diffuser Wear Ring	4K1014	4K1013
12	Bushing Locking Cover	4K1012	
9	C Impeller 145mm	2K1231	2K1233
8	A Impeller 141mm	2K1235	2K1236
	B Impeller 136mm	2K1232	2K1234
29	Initial Impeller Spacer	4L513	
34	Intermediate Impeller Spacer	4K1017	
35	Impeller Spacer	4K1016	
4	Final Impeller Spacer	4K1015	
36	Bushing / Piston Screw	13L114	
32	Bearing Spider	1K713	1K714
28F	Initial Stage Washer	13L129	
28D	Impeller Stack Screw	13L109	
-	Tie Rod Nuts	13K366	
-	Tie Rod Washers	13K307	
19	Diffuser Screw	13K429	
-	Initial Diffuser Anti Rotation Screw	13K418	
-	Coupling Shim	4L242	
-	Fill Funnel	4L247	
21	Complete O-Ring Kit - EPDM	5K378	
	Complete O-Ring Kit - Viton	5K379	

Pump Bodies			
Item Number	Part Name	125SV	
		304	316
14	G Pump Body Class 125	1L666	
	G Pump Body Class 250	1L667	
	N Pump Body Class 150	1L668	
	N Pump Body Class 300	1L669	
Mechanical Seals			
1	0 Seal Car/SilCar/Viton	10L38	
	6 Seal Car/SilCar/EPDM	10L40	
	2 Seal SilCar/SilCar/Viton	10L39	
	4 Seal SilCar/SilCar/EPDM	10L37	
	7 Cartridge Seal Car/SilCar/Viton	10K163	
	8 Cartridge Seal SilCar/SilCar/EPDM	10K166	
	Cartridge Seal NPT Plug	6K162	
Vent Plug with O-Ring			
39	Elastomer Type	125SV	
	Viton	6L53	
	EPDM	6L49	
Fill Plug with O-Ring			
40	Elastomer Type	125SV	
	Viton	6L52	
	EPDM	6L48	
Drain Plug with O-Ring			
38	Elastomer Type	125SV	
	Viton	6L54 (qty. 2)	
	EPDM	6L50 (qty. 2)	
Flange Plug			
37	3/8" NPT 316	6L58 (qty. 2)	

### e-SV Product Line Shafts

Stage	Shafts										
	1SV	3SV	5SV	10SV	15SV	22SV	33SV	46SV	66SV	92SV	125SV
1				4K1102	4K1103	4K1103	4L516	4L516	4L525	4L525	4L614
2	4K1042	4K1042	4K1041	4K1102	4K1103	4K1103	4L517	4L517	4L526	4L526	4L615
3	4K1042	4K1042	4K1043	4K1103	4K1105	4K1105	4L518	4L518	4L527	4L527	4L616
4	4K1044	4K1044	4K1045	4K1104	4K1107	4K1107	4L519	4L519	4L528	4L528	4L617
5	4K1045	4K1045	4K1047	4K1106	4K1109	4K1109	4L520	4L520	4L529	4L529	4L618
6	4K1046	4K1046	4K1049	4K1107	4K1111	4K1111	4L521	4L521	4L530	4L530	4L696
7	4K1048	4K1048	4K1051	4K1108	4K1113	4K1113	4L522	4L522			4L708
8	4K1050	4K1050	4K1053	4K1110	4K1115	4K1115	4L523	4L523			4L684
9	4K1052	4K1052	4K1055	4K1111	4K1117	4K1117	4L524	4L524			
10	4K1053	4K1053	4K1057	4K1112	4K1119	4K1119	4L578	4L578			
11	4K1054	4K1054	4K1059	4K1114	4K1121	4K1121					
12	4K1056	4K1056	4K1061	4K1115	4K1123	4K1123					
13	4K1058	4K1058	4K1063	4K1116	4K1125						
14	4K1060	4K1060	4K1065	4K1118	4K1127						
15	4K1061	4K1061	4K1067	4K1119	4K1128						
16	4K1062	4K1062	4K1069	4K1120							
17	4K1064	4K1064	4K1071	4K1122							
18	4K1066	4K1066	4K1073	4K1123							
19	4K1068	4K1068	4K1075	4K1124							
20	4K1069	4K1069	4K1077	4K1126							
21	4K1070	4K1070	4K1079								
22	4K1072	4K1072	4K1081								
23	4K1074	4K1074	4K1083								
24	4K1076	4K1076	4K1085								
25	4K1077	4K1077	4K1087								
26	4K1078	4K1078	4K1089								
27	4K1080	4K1080	4K1091								
28	4K1082	4K1082									
29	4K1084	4K1084									
30	4K1085	4K1085									

## Commercial Water

### e-SV Product Line Casings

Stage	25 Bar (368 PSI) Single Wall Casings										
	1SV	3SV	5SV	10SV	15SV	22SV	33SV	46SV	66SV	92SV	125SV*
1				1K780	1K781	1K781	4L532	4L532	4L541	4L541	1L845
2	1K719	1K719	1K718	1K780	1K781	1K781	4L533	4L533	4L542	4L542	1L846
3	1K719	1K719	1K720	1K781	1K783	1K783	4L534	4L534	4L543	4L543	1L847
4	1K721	1K721	1K722	1K782	1K785	1K785	4L535	4L535	4L544	4L544	1L848
5	1K722	1K722	1K724	1K784	1K787	1K787	4L536	4L536	4L545	4L545	1L849
6	1K723	1K723	1K726	1K785	1K789	1K789	4L537	4L537	4L546	4L546	1L865
7	1K725	1K725	1K728	1K786	1K791	1K791	4L538	4L538			1L847 4L546 1L858
8	1K727	1K727	1K730	1K788	1K793	1K793	4L539	4L539			1L848 4L546 1L858
9	1K729	1K729	1K732	1K789	1K795	1K795	4L540	4L540			
10	1K730	1K730	1K734	1K790	1K797	1K797	4L577	4L577			
11	1K731	1K731	1K736	1K792	1K799	1K799					
12	1K733	1K733	1K738	1K793	1K801	1K801					
13	1K735	1K735	1K740	1K794	1K803						
14	1K737	1K737	1K742	1K796	1K805						
15	1K738	1K738	1K744	1K797	1K806						
16	1K739	1K739	1K746	1K798							
17	1K741	1K741	1K748	1K800							
18	1K743	1K743	1K750	1K801							
19	1K745	1K745	1K752	1K802							
20	1K746	1K746	1K754	1K804							
21	1K747	1K747	1K756								
22	1K749	1K749	1K758								
23	1K751	1K751	1K760								
24	1K753	1K753	1K762								
25	1K754	1K754	1K764								
26	1K755	1K755	1K766								
27	1K757	1K757	1K768								
28	1K759	1K759									
29	1K761	1K761									
30	1K762	1K762									

\* 125SV - For 7-8 stage pumps (2) casings and (1) sleeve ring required.

#### R Config Casing

Stage	1SV	3SV	5SV	10SV	15SV	22SV	Stage	1SV	3SV	5SV	10SV	15SV	22SV
1							16	1L745	1L745	1L752	1L800		
2							17	1L747	1L747	1L754	1L802		
3							18	1L749	1L749	1L756	1L803		
4					1L787	1L787	19	1L751	1L751	1L758	1L804		
5				1L786	1L789	1L789	20	1L752	1L752	1L760	1L806		
6				1L787	1L791	1L791	21	1L753	1L753	1L762			
7			1L734	1L788	1L793	1L793	22	1L755	1L755	1L764			
8	1L733	1L733	1L736	1L790	1L795	1L795	23	1L757	1L757	1L766			
9	1L735	1L735	1L738	1L791	1L797	1L797	24	1L759	1L759	1L768			
10	1L736	1L736	1L740	1L792	1L799	1L799	25	1L760	1L760	1L770			
11	1L737	1L737	1L742	1L794	1L801	1L801	26	1L761	1L761	1L772			
12	1L739	1L739	1L744	1L795	1L803	1L803	27	1L763	1L763	1L774			
13	1L741	1L741	1L746	1L796	1L805		28	1L765	1L765				
14	1L743	1L743	1L748	1L798	1L807		29	1L767	1L767				
15	1L744	1L744	1L750	1L799	1L808		30	1L768	1L768				

### e-SV Product Line Casings

Stage	40 Bar (580 PSI) Double Wall Casings										
	1SV	3SV	5SV	10SV	15SV	22SV	33SV	46SV	66SV	92SV	125SV*
1				1L811	1L812	1L812	4L497	4L497	4L585	4L585	1L868
2	1L671	1L671	1L670	1L811	1L812	1L812	4L498	4L498	4L586	4L586	1L870
3	1L671	1L671	1L672	1L812	1L814	1L814	4L499	4L499	4L587	4L587	1L872
4	1L673	1L673	1L674	1L813	1L816	1L816	4L500	4L500	4L580	4L580	1L874
5	1L674	1L674	1L676	1L815	1L818	1L818	4L501	4L501	4L581	4L581	1L868 4L582 1L858
6	1L675	1L675	1L678	1L816	1L820	1L820	4L502	4L502	4L582	4L582	1L870 4L582 1L858
7	1L677	1L677	1L680	1L817	1L822	1L822	4L503	4L503			1L872 4L582 1L858
8	1L679	1L679	1L682	1L819	1L824	1L824	4L504	4L504			1L874 4L582 1L858
9	1L681	1L681	1L684	1L820	1L826	1L826	4L505	4L505			
10	1L682	1L682	1L686	1L821	1L828	1L828	4L579	4L579			
11	1L683	1L683	1L688	1L823	1L830	1L830					
12	1L685	1L685	1L690	1L824	1L832	1L832					
13	1L687	1L687	1L692	1L825	1L834						
14	1L689	1L689	1L694	1L827	1L836						
15	1L690	1L690	1L696	1L828	1L838						
16	1L691	1L691	1L698	1L829							
17	1L693	1L693	1L700	1L831							
18	1L695	1L695	1L702	1L832							
19	1L697	1L697	1L704	1L833							
20	1L698	1L698	1L706	1L835							
21	1L699	1L699	1L708								
22	1L701	1L701	1L710								
23	1L703	1L703	1L712								
24	1L705	1L705	1L714								
25	1L706	1L706	1L716								
26	1L707	1L707	1L718								
27	1L709	1L709	1L720								
28	1L711	1L711									
29	1L713	1L713									
30	1L714	1L714									

\* 125SV - For 5-8 stage pumps (2) casings and (1) sleeve ring required.

### e-SV Product Line Tie Rods

Tie Rods - Fabricated Pump Bodies						
Stage	1SV	3SV	5SV	10SV	15SV	22SV
1				4K946	4K947	4K947
2	4K822	4K822	4K821	4K946	4K947	4K947
3	4K822	4K822	4K823	4K947	4K949	4K949
4	4K824	4K824	4K825	4K948	4K951	4K951
5	4K825	4K825	4K827	4K950	4K953	4K953
6	4K826	4K826	4K829	4K951	4K955	4K955
7	4K828	4K828	4K831	4K952	4K957	4K957
8	4K830	4K830	4K833	4K954	4K959	4K959
9	4K832	4K832	4K835	4K955	4K961	4K961
10	4K833	4K833	4K837	4K956	4K963	4K963
11	4K834	4K834	4K839	4K958	4K965	4K965
12	4K836	4K836	4K841	4K959	4K967	4K967
13	4K838	4K838	4K843	4K960	4K969	
14	4K840	4K840	4K845	4K962	4K971	
15	4K841	4K841	4K847	4K963	4K972	
16	4K842	4K842	4K849	4K964		
17	4K844	4K844	4K851	4K966		
18	4K846	4K846	4K853	4K967		
19	4K848	4K848	4K855	4K968		
20	4K849	4K849	4K857	4K970		
21	4K850	4K850	4K859			
22	4K852	4K852	4K861			
23	4K854	4K854	4K863			
24	4K856	4K856	4K865			
25	4K857	4K857	4K867			
26	4K858	4K858	4K869			
27	4K860	4K860	4K871			
28	4K862	4K862				
29	4K864	4K864				
30	4K865	4K865				

### e-SV Product Line Tie Rods

Tie Rods - Cast Pump Bodies											
Stage	1SV	3SV	5SV	10SV	15SV	22SV	33SV	46SV	66SV	92SV	125SV
1				4K975	4K976	4K976	4L557	4L557	4L570	4L570	4K1029
2	4K885	4K885	4K884	4K975	4K976	4K976	4L558	4L558	4L571	4L571	4K1030
3	4K885	4K885	4K886	4K976	4K978	4K978	4L559	4L559	4L572	4L572	4K1031
4	4K887	4K887	4K888	4K977	4K980	4K980	4L560	4L560	4L573	4L573	4K1032
5	4K888	4K888	4K890	4K979	4K982	4K982	4L561	4L561	4L562	4L562	4K1033
6	4K889	4K889	4K892	4K980	4K984	4K984	4L562	4L562	4L574	4L574	4K1034
7	4K891	4K891	4K894	4K981	4K986	4K986	4L563	4L563			4K1035
8	4K893	4K893	4K896	4K983	4K988	4K988	4L564	4L564			4K1132
9	4K895	4K895	4K898	4K984	4K990	4K990	4L565	4L565			
10	4K896	4K896	4K900	4K985	4K992	4K992	4L566	4L566			
11	4K897	4K897	4K902	4K987	4K994	4K994					
12	4K899	4K899	4K904	4K988	4K996	4K996					
13	4K901	4K901	4K906	4K989	4K998						
14	4K903	4K903	4K908	4K991	4K1000						
15	4K904	4K904	4K910	4K992	4K1001						
16	4K905	4K905	4K912	4K993							
17	4K907	4K907	4K914	4K995							
18	4K909	4K909	4K916	4K996							
19	4K911	4K911	4K918	4K997							
20	4K912	4K912	4K920	4K999							
21	4K913	4K913	4K922								
22	4K915	4K915	4K924								
23	4K917	4K917	4K926								
24	4K919	4K919	4K928								
25	4K920	4K920	4K930								
26	4K921	4K921	4K932								
27	4K923	4K923	4K934								
28	4K925	4K925									
29	4K927	4K927									
30	4K928	4K928									

### Low NPSH Conversion Kits \* †

Kit Number	Description
2L931	1SV Low NPSH Conversion Kit
2L932	3SV Low NPSH Conversion Kit
2L933	5SV Low NPSH Conversion Kit
2L934	10SV Low NPSH Conversion Kit
2L935	15/22SV LowNPSH Conversion Kit
2L937	33SV LowNPSH Conversion Kit "G" Configuration
2L938	33SV LowNPSH Conversion Kit "N" Configuration
2L939	46SV Low NPSH Conversion Kit "G" and "N" Configuration
2L940	66SV LowNPSH Conversion Kit "G" Configuration
2L941	66SV LowNPSH Conversion Kit "N" Configuration

\* Kits do not contain o-rings, please order separately.

† Installation of a Low-NPSH kit will alter pump performance and power requirements. Contact factory for application information.

### e-SV Product Line Horizontal Mounting

Model	Shims by frame size for ALL CONFIGS EXCEPT R						
	56C	180TC	210TC	250TC	280TC	320TSC	360TSC
1SV	13K249						
3SV	13K249	-	13K248				
5SV	13K249	-	13K248				
10SV	13K431	13K346	13K249	-			
15SV	13K431	13K346	13K249	-	13K248		
22SV	13K431	13K346	13K249	-	13K248		
33SV	-	9K440	9K441	9K442	13K249	13K249	-
46SV	-	9K440	9K441	9K442	13K249	13K249	-
66SV	-	9K440	9K441	9K442	13K249	13K249	-
92SV	-	9K440	9K441	9K442	13K249	13K249	-

Model	Shims by frame size for R CONFIG ONLY						
	56C	180TC	210TC	250TC	280TC	320TSC	360TSC
1SV	13K249						
3SV	13K249	-	13K248				
5SV	13K249	-	13K248				
10SV	13K249	-	13K248	13K346			
15SV	13K249	-	13K248	13K346	13K430		
22SV	13K249	-	13K248	13K346	13K430		
33SV							
46SV							
66SV							
92SV							

Horizontal Mounting Foot		
	T, F, N, P, G, C	R
1SV	9L92	9L93
3SV	9L92	9L93
5SV	9L92	9L93
10SV	9L90	9L91
15SV	9L90	9L91
22SV	9L90	9L91
33SV	9K442	
46SV	9K443	
66SV	9K443	
92SV	9K443	

# Xylem |'zīləm|

- 1) The tissue in plants that brings water upward from the roots;
- 2) a leading global water technology company.

We're 12,500 people unified in a common purpose: creating innovative solutions to meet our world's water needs. Developing new technologies that will improve the way water is used, conserved, and re-used in the future is central to our work. We move, treat, analyze, and return water to the environment, and we help people use water efficiently, in their homes, buildings, factories and farms. In more than 150 countries, we have strong, long-standing relationships with customers who know us for our powerful combination of leading product brands and applications expertise, backed by a legacy of innovation.

**For more information on how Xylem can help you, go to [www.xylem.com](http://www.xylem.com)**



Xylem Inc.  
1 Goulds Drive  
Auburn, NY 13021  
Phone: (800) 453-6777  
Fax: (888) 322-5877  
[www.gouldswatertechnology.com](http://www.gouldswatertechnology.com)

Goulds is a registered trademark of Goulds Pumps, Inc. and is used under license.  
© 2014 Xylem Inc. ReSV R2 December 2014