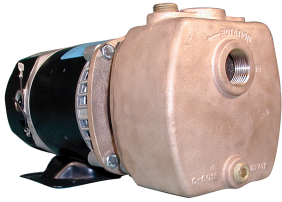


# BRONZE SELF-PRIMING CENTRIFUGAL PUMP

## CENTRIFUGAL PUMPS SERIES 300B



### FEATURES

- Self-Priming to 20 Feet Suction Lift
- Rugged Bronze Construction
- Ideal for marine service (air conditioning, bilge, and sea water recirculating).
- O-Ring Housing seal eliminates gasket problems
- Auxiliary Connections - for convenient priming and draining
- Multiple Mechanical Shaft Seal Options -for various applications
- Pump Heads mount to Standard Footed Nema 56J Jet Pump Motors
- Shafts : 416 Stainless, Nickel Alloy, or 316 Passivated Stainless
- Multiple motor options including Explosion Proof
- For Pedestal Style, see 30PB
- Optional Lifting Handle

### DRIVE

Centrifugal pumps are designed for single rotation and are non reversible. Standard rotation is counter clockwise looking at the pump inlet port (clockwise facing pump shaft). Close coupled centrifugal pumps may be driven by a variety of power sources such as electric motors, hydraulic motors or air motors. Self priming centrifugal pumps must be operated in the horizontal position.

### LIQUIDS AND TEMPERATURE

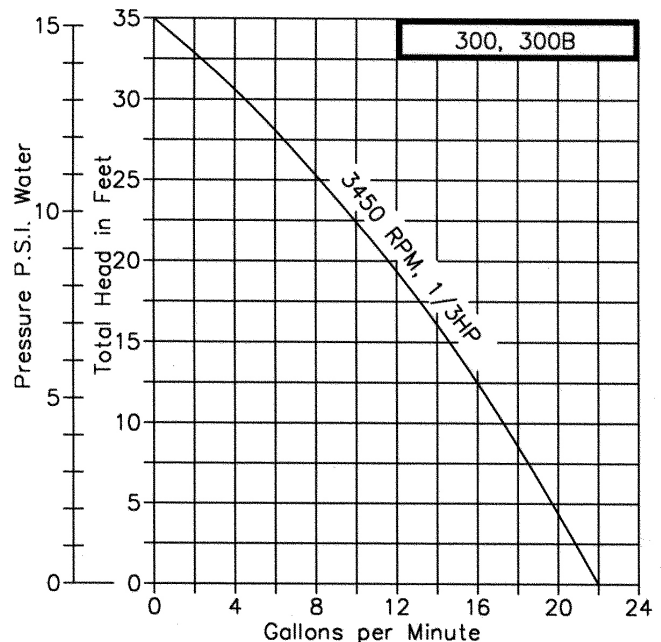
Capacity - Water 60o F - Gallons Per Minute

Maximum lift without foot valve is 10 feet.

Bronze pumps are suitable for most common liquids in the pH range from 4-11. If in doubt consult with factory or check the Oberdorfer™ Chemical Resistance Guide booklet. The temperature limit for bronze pumps is 212F. Higher temperatures are possible with fluoroelastomer or Polytetrafluoroethylene (PTFE) seals. Centrifugal pumps are not well suited for pumping viscous liquids. Viscosities up to 2000 SSu may be handled resulting in reduced performance and efficiency.

Pump seal is mechanical carbon face type mated to ceramic wear face for maximum durability. Other seal components are made of Nitrile with low swell characteristics for compatibility with a wide range of liquids including many chemicals and solvents.

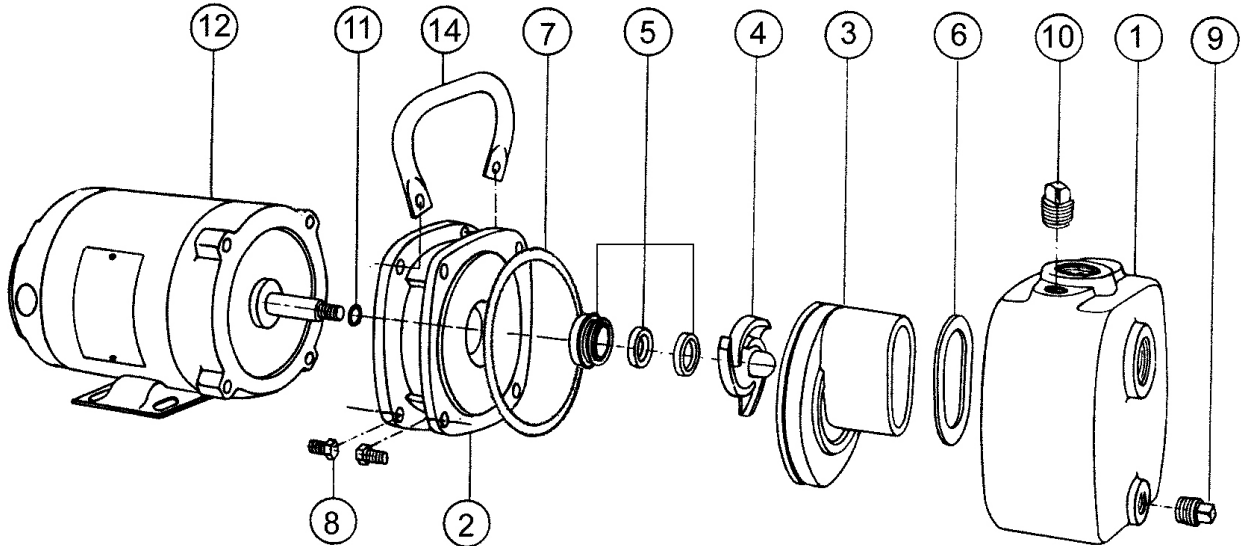
### PERFORMANCE



## SUCTION LIFT

Up to 22 gallons per minute water flow and suction lift of 15 feet without a foot or check valve (25 foot suction lift using a foot or check valve and a filled inlet line). A 1/2" pipe plug on the tank top is for initial filling of priming chamber and inlet line--pump priming is automatic thereafter.

## EXPLODED VIEW AND PARTS LIST



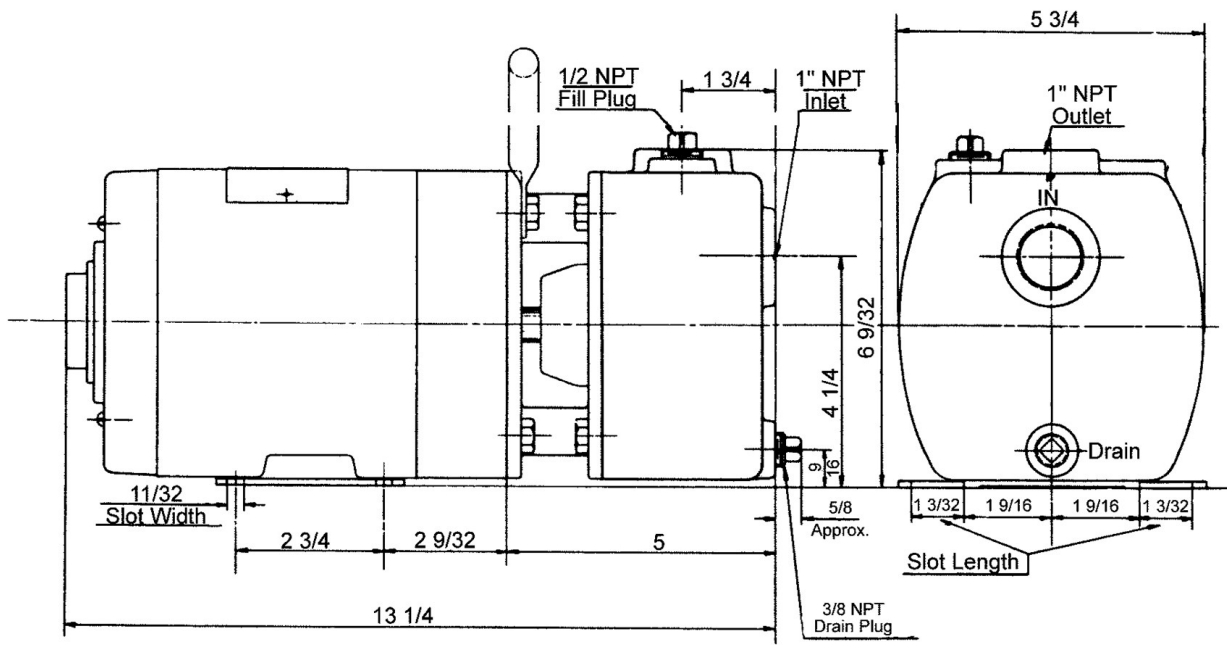
Pump Number	1	2	3	4 <sup>1</sup>	5 <sup>1</sup>	6 <sup>1</sup>	7 <sup>1</sup>	8	9	10	11 <sup>1</sup>	12	13 <sup>1</sup>	Repair Kit <sup>1</sup>
	Body	Adapter	Diffuser	Impeller	Seal Assy.	Gasket Diffus.	Gasket Flange	Screw	Plug	Plug	Shim	Motor	Set Screw	
	1 Reqd	1 Reqd	1 Reqd	1 Reqd	1 Reqd	1 Reqd	1 Reqd	8 Reqd	1 Reqd	1 Reqd	1 Reqd	1 Reqd	1 Reqd	
300	6015	6014	6017	6006	32155	6021	6022	5411	6440	6441	6025	---	---	10791
300B	7190	7191	7192	7193	32155	6021	6022	5411	7321	7443	6025	---	---	10865
300P	6015	6014	6017	7199	32155	6021	6022	5411	6440	6441	6025	---	9849	10864

<sup>1</sup>Repair Kit #10791 and #10865 include items 4, 5, 6, 7 & 11. Repair kit #10864 includes items 4, 5, 6, 7, 11 & 13.

Pump No.	Motor	Part #
300-F13	1/3 HP, 3450 RPM, 115v, Single Phase, ODP	5859
300-J17	1/2 HP, 3450 RPM, 110/220v, Single Phase, TEFC	8772
300-J20	1/2 HP, 3450 RPM, 115/230v, Single Phase, XP	7976
300B-01F26	1/3 HP, 345- RPM, 115v, Single Phase, ODP	32273
300B-01J26	1/2 HP, 3450 RPM, 115/230v, Single Phase, ODP	32332
300B-01J30	1/2 HP, 3450 RPM, 115/230v, Single Phase, TEFC	32498
300B-01J33	1/2 HP, 3450 RPM, 115/230v, Single Phase, ODP	8280
300B-F13	1/3 HP, 3450 RPM, 115v, Single Phase, ODP	5859

Pump No.	Motor	Part #
300B-F19	1/3 HP, 3450 RPM, 115/230v, Single Phase, ODP	7957
300B-F21	1/3 HP, 3450 RPM, 115/230v, Single Phase, XP	8214
300B-J17	1/2 HP, 3450 RPM, 110/220v, Single Phase, TEFC	8772
300B-J20	1/2 HP, 3450 RPM, 115/230v, Single Phase, XP	7976
300P-F57	1/3 HP, 3450 RPM, 220/440v, Three Phase, ODP	6996
300P-J57	1/2 HP, 3450 RPM, 220/440v, Three Phase, ODP	6998
300P-J58	1/2 HP, 3450 RPM, 220/440v, Three Phase, TEFC	9214

# DIMENSIONS



## SEAL OPTIONS

(Note: Seal and shaft modifications below are not physically interchangeable. Consult factory for modification data.)  
 Fluoroelastomer, A Solvent Mechanical Seal: Mechanical seal for oils, fuels, lubricants, most mineral acids, and many solvents that attack other rubbers such as Carbon Tetrachloride, toluene, benzene, and xylene.  
 Polytetrafluoroethylene (PTFE) Mechanical Seal: For virtually all industrial chemicals, corrosives and solvents - as limited by compatibility of basic pump metal of construction.

## ADDITIONAL

Discharge Pressure		3450 RPM Suction Lift				
Feet	Equiv. P.S.I.	0 Ft.	5 Ft.	10 Ft.	15 Ft.	20 Ft.
0	0	22	20	17	14	10
5	2.2	20	17	14	10	5
10	4.3	17	14	10	5	---
15	6.5	14	10	5	---	---
20	8.7	10	5	---	---	---
25	10.8	5	---	---	---	---
30	13.0	3	---	---	---	---
35	15.2	1	---	---	---	---

Pump No.	Motor	Part #
300-F13	1/3 HP, 3450 RPM, 115v, Single Phase, ODP	5859
300-J17	1/2 HP, 3450 RPM, 110/220v, Single Phase, TEFC	8772
300-J20	1/2 HP, 3450 RPM, 115/230v, Single Phase, XP	7976
300B-01F26	1/3 HP, 345- RPM, 115v, Single Phase, ODP	32273
300B-01J26	1/2 HP, 3450 RPM, 115/230v, Single Phase, ODP	32332
300B-01J30	1/2 HP, 3450 RPM, 115/230v, Single Phase, TEFC	32498
300B-01J33	1/2 HP, 3450 RPM, 115/230v, Single Phase, ODP	8280
300B-F13	1/3 HP, 3450 RPM, 115v, Single Phase, ODP	5859

Pump No.	Motor	Part #
300B-F19	1/3 HP, 3450 RPM, 115/230v, Single Phase, ODP	7957
300B-F21	1/3 HP, 3450 RPM, 115/230v, Single Phase, XP	8214
300B-J17	1/2 HP, 3450 RPM, 110/220v, Single Phase, TEFC	8772
300B-J20	1/2 HP, 3450 RPM, 115/230v, Single Phase, XP	7976
300P-F57	1/3 HP, 3450 RPM, 220/440v, Three Phase, ODP	6996
300P-J57	1/2 HP, 3450 RPM, 220/440v, Three Phase, ODP	6998
300P-J58	1/2 HP, 3450 RPM, 220/440v, Three Phase, TEFC	9214

Discharge Head		Suction Lift		
Feet	P.S.I.	0 Ft.	5 Ft.	10 Ft.
0	0	20	17	13
5	3.5	19	16	11.5
10	7.1	18	14	10
15	10.5	16	12	7
20	14.1	14	9	4
25	17.6	11	5	---
30	21.1	7	---	---
35	24.6	1	---	---

Pump No.	Material
300B	Bronze with stainless steel shaft, Single Phase
300B-01	Bronze with Nickle Alloy shaft, Single Phase