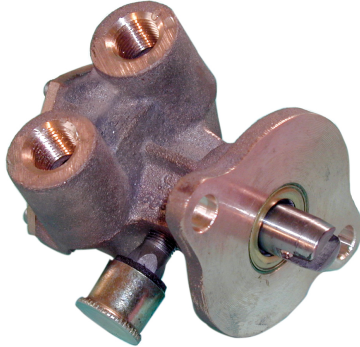


BRONZE RUBBER IMPELLER PUMP

RUBBER IMPELLER PUMPS SERIES N202M PERFORMANCE



FEATURES

- Rugged Simplicity
- Corrosion Resistant
- Convenient Drain Plug
- 2 Bolt or 5 Bolt Flange Mounting
- Slotted Shaft Drive or Male Tang Drive
- 2 Separate Seals: Main Pump and Flange Mounting
- "Up" Direction In & Out Ports
- Large Drain and Vent Openings
- High Chrome Nickel Stainless Steel Shaft
- Impeller Easily Replaced
- Machined In Cam

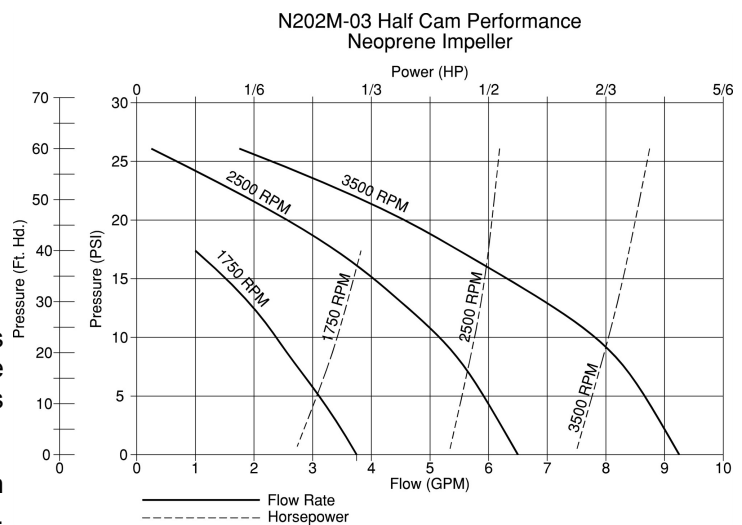
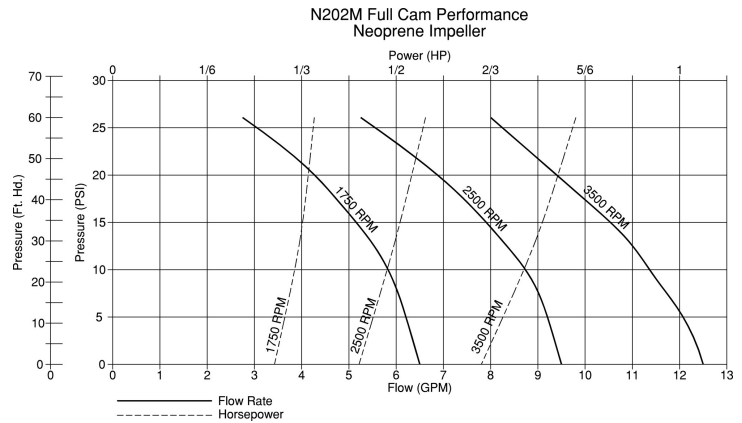
DRIVE

Direction of shaft rotation determines inlet and outlet ports (see line dimension drawing). Prior to installation, rotate the pump manually in direction of rotation to set flexible blades in direction desired.

DO NOT RUN DRY - Rubber impellers generate high rubbing friction unless lubricated by liquid being pumped. Lack of liquid will cause impeller to burn up.

LIQUIDS AND TEMPERATURE

Liquids compatible with neoprene can be pumped including fresh and salt water solutions and mild chemicals. Do not pump gasoline, severe solvents or acids. When possible, flush pump with fresh water after each usage. Nitrile impellers can handle oil contaminated water and kerosene at reduced impeller service life. Extremes of cold and heat will affect impeller life. Limits of 40°F to 180°F should be observed. Do not allow liquid in pump to freeze. Drain pump by removing drain plug provided located at bottom of pump body. Use methyl alcohol based anti-freeze compounds.



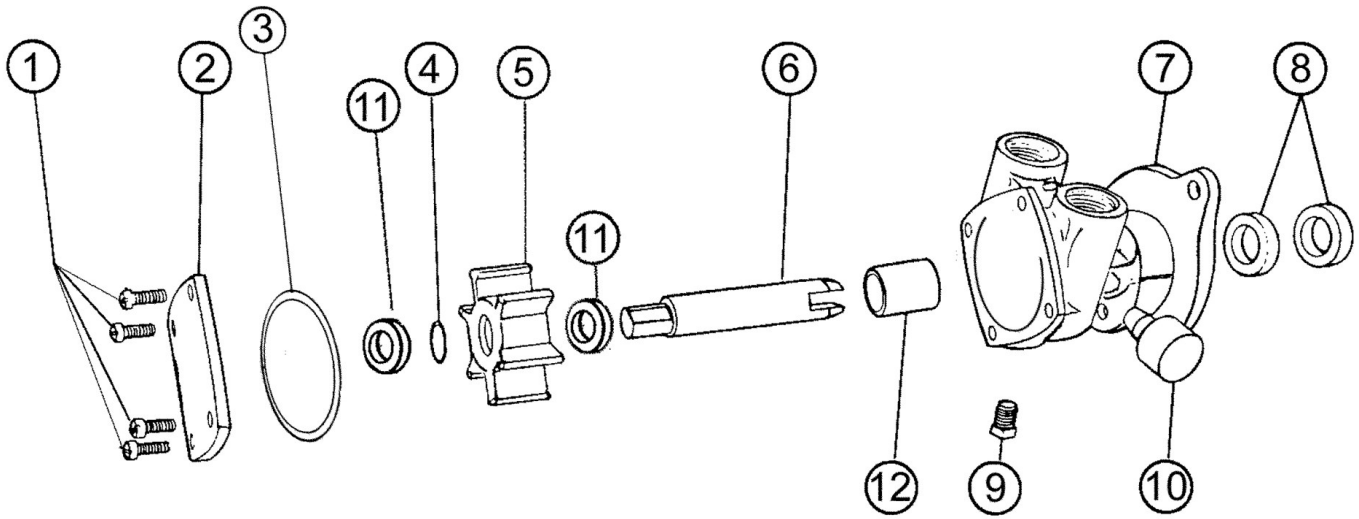
WATER AT 60°F

PUMP	RPM	FT. HD	Flow Rate						
			0	10	20	30	40	50	60
N202M N202M-07 N202M-15 N202M-16	1750	PSI	0	4.3	8.7	13	17.3	21.7	26
		GPM	6 1/2	6 1/4	6	5 1/2	4 3/4	4	2 3/4
		HP	1/3	1/3	1/3	1/3	1/3	1/3	1/3
	2500	GPM	9 1/2	9 1/4	9	8 1/4	7 1/2	6 1/2	5 1/4
		HP	1/2	1/2	1/2	1/2	1/2	1/2	1/2
		GPM	12 1/2	12 1/4	11 1/2	11	10	9	8
3500	HP	3/4	3/4	3/4	3/4	3/4	3/4	3/4	
	GPM	3 3/4	3 1/4	2 1/2	2	1	—	—	
	HP	1/3	1/3	1/3	1/3	1/3	—	—	
N202M-03	1750	GPM	6 1/2	6	5 1/2	4 1/2	3 1/2	2	1/4
		HP	1/2	1/2	1/2	1/2	1/2	1/2	1/2
		GPM	9 1/4	8 3/4	8 1/4	7	5 1/2	4	1 3/4
	2500	HP	3/4	3/4	3/4	3/4	3/4	3/4	3/4
		GPM	3 3/4	3 1/4	2 1/2	2	1	—	—
		HP	1/3	1/3	1/3	1/3	1/3	—	—
3500	GPM	6 1/2	6	5 1/2	4 1/2	3 1/2	2	1/4	
	HP	1/2	1/2	1/2	1/2	1/2	1/2	1/2	
	GPM	9 1/4	8 3/4	8 1/4	7	5 1/2	4	1 3/4	
3500	HP	3/4	3/4	3/4	3/4	3/4	3/4	3/4	

SUCTION LIFT

On initial start-up, pump must be primed to prevent dry-running of the impeller. Suction lift of 15 ft. is possible when impeller is wet and pump fully primed. Suction lines must be air tight in order for pump to self prime.

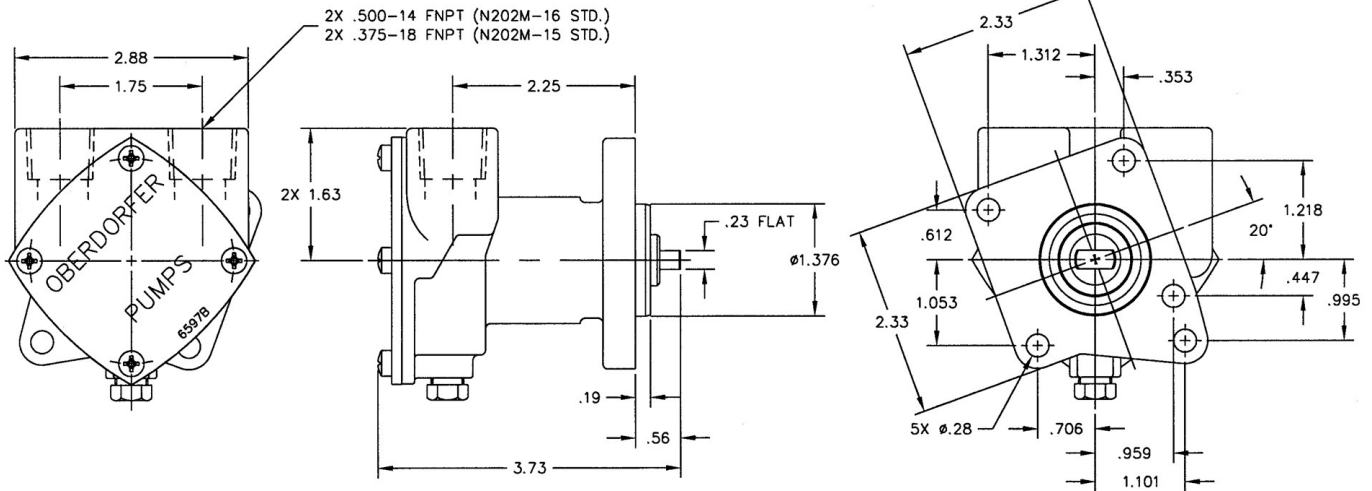
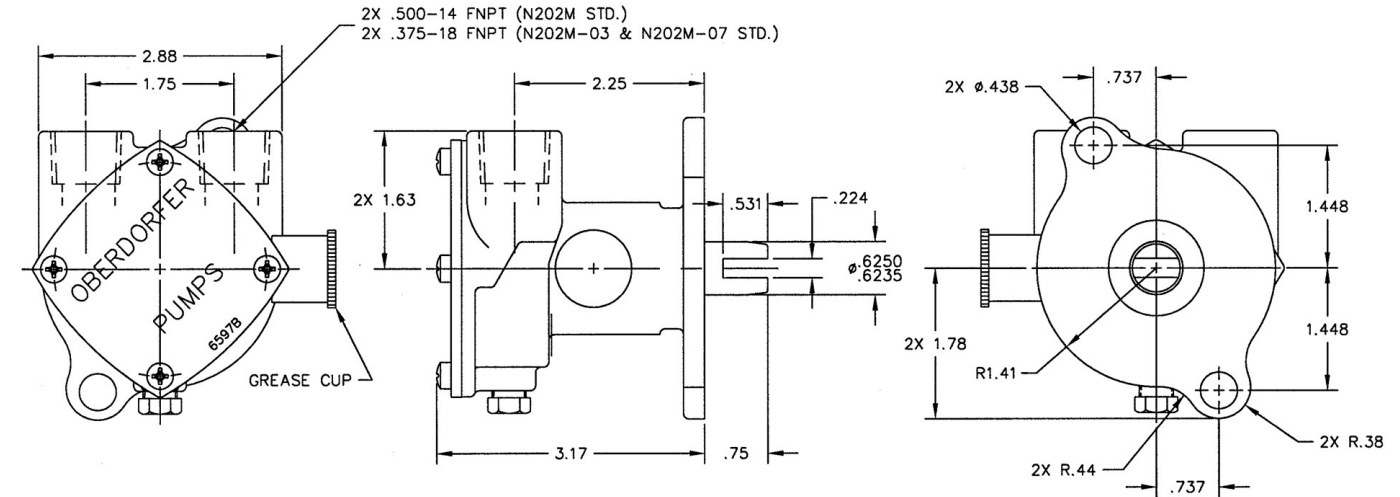
EXPLODED VIEW AND PARTS LIST



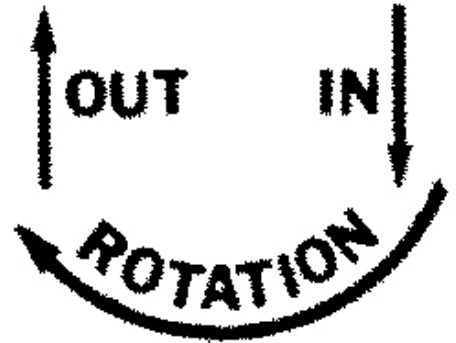
Model	Item Name	1	2	3	4	5	6	7	8	9	10	11	12	Repair Kit ⁴
	Required	4	1	1	1	1	1	1	2	1	1	2	1	
N202M		5385	6597B	9797-034	5373	6593	6598	6595-1	5463	6600	5910			10725
N202M-03		5385	6597B	9797-034	5373	6593	6598	6892-2	5463	6600	5910			10725
N202M-07		5385	6597B	9797-034	5373	6593	6598	6892-1	5463	6600	5910			10725
N202M-15		5385	6597B	9797-034	5373	6593	8767	8920-1C	5463	6600		9647	5091	11691
N202M-16		5385	6597B	9797-034	5373	6593	8767	9879-1C	5463	6600		9647	5091	11691

- Notes:
- 1 Neoprene impeller is standard, optional Buna impeller (8514) available
 - 2 Brass case, buna elastomer
 - 3 Pumps equipped with pre-filled grease cups from the factory, N202M, N202M-03, N202M-07
 - 4 Kits contain items 3,4,5, 8 and (when applicable) 12 and gaskets for older models
 - 5 Body P/N is a sub-assy that also includes item 12, carbon bearing (when applicable)

DIMENSIONS



ROTATION



ROTATION DIAGRAM LOOKING AT COVER