

# **BALDOR**® • ***RELIANCE***

## **Product Information Packet**

# **CTM1760T**

**10/2.5HP, 1770/880RPM, 3PH, 60HZ, 215T, 0750M**

Part Detail							
Revision:	C	Status:	PRD/A	Change #:		Proprietary:	No
Type:	AC	Prod. Type:	0750M	Elec. Spec:	07WGX525	CD Diagram:	CD0032
Enclosure:	TEFC	Mfg Plant:		Mech. Spec:	07N044	Layout:	07LYN044
Frame:	215T	Mounting:	F1	Poles:	04/08	Created Date:	08-15-2014
Base:	RG	Rotation:	R	Insulation:	F	Eff. Date:	10-31-2016
Leads:	6#14					Replaced By:	
Literature:		Elec. Diagram:					

Nameplate NP2134E											
CAT.NO.	CTM1760T										
SPEC.	07N044X525G1										
HP	10/2.5										
VOLTS	460										
AMP	14.3/5.9										
RPM	1770/880										
FRAME	215T				HZ	60		PH	3		
SER.F.	1.15			CODE	L		DES	A		CL	F
NEMA-NOM-EFF	89.5				PF	73					
RATING	40C AMB-CONT										
CC									USABLE AT 208V		
DE	6307				ODE	6206					
ENCL	TEFC			SN							

Parts List		
Part Number	Description	Quantity
SA286536	SA 07N044X525G1	1.000 EA
RA272768	RA 07N044X525G1	1.000 EA
HW3201A05	3/8-16 EYEBOLT	1.000 EA
RM1017	LEAD SEPERATOR GASKET MODEL 307 1/8" THK	1.000 EA
09CB1002A05G	CONDUIT BOX, 1.00 N.P.T. (GRAY)	1.000 EA
51XW2520A12	.25-20 X .75, TAPTITE II, HEX WSHR SLTD	2.000 EA
11XW1032G06	10-32 X .38, TAPTITE II, HEX WSHR SLTD U	1.000 EA
HW3001B01	BRASS CUP WASHER, FOR #8 SCREW	1.000 EA
10XN2520S06	1/4 20X3/8 HX HD CAP S.S.	2.000 EA
WD1000B16	T&B CX70TN TERMINAL	2.000 EA
37EP1100A72G	FR ENDPLATE, MACH W/GRAY EPOXY	1.000 EA
HW4500A01	1641B(ALEMITE)400 UNIV, GREASE FITT	1.000 EA
HA4051A00	PLASTIC CAP FOR GREASE FITTING	1.000 EA
HW4500A17	317400 ALEMITE GREASE RELIEF	1.000 EA
HA4054	SHORT T-DRAIN FITTING, .125" N.P.T.	1.000 EA
HW4600A01	#11585 SEAL(C-R),2669 NAT	1.000 EA
HW5100A06	W2420-025 WVY WSHR (WB)	1.000 EA
37EP1101A60G	PU EP 07 BRG W/GRS, RELIEF, DRAIN PLUG &	1.000 EA
HW4500A01	1641B(ALEMITE)400 UNIV, GREASE FITT	1.000 EA
HA4051A00	PLASTIC CAP FOR GREASE FITTING	1.000 EA
HW4500A17	317400 ALEMITE GREASE RELIEF	1.000 EA
HW4600B51	SEAL 1.375 X 2.125 X 0.313 SINGLE LIP DB	1.000 EA
HA4054	SHORT T-DRAIN FITTING, .125" N.P.T.	1.000 EA
HA3104A32	THRUBOLT- 5/16-18 X12.750	4.000 EA

Parts List (continued)		
Part Number	Description	Quantity
XY3118A12	5/16-18 HEX NUT DIRECTIONAL SERRATION	4.000 EA
51XB1214A20	12-14X1.25 HXWSSLD SERTYB	1.000 EA
10XN2520A28	1/4-20X 1 3/4 HEX HD	3.000 EA
07FH1001A01G	SPL FAN HOUSING, 307, W/GREASER, GRAY EP	1.000 EA
WD4100A02	DP-1000 HEYCO PLUG OR 62MP1000 MICRO PL	1.000 EA
12CB1503A01G	CONDUIT BOX LID, MACH, WITH LIP,GREY	1.000 EA
12GS1002	GASKET, CONDUIT BOX LID, NEOP	1.000 EA
10XN2520A24	1/4-20X 1 1/2 HEX HD X	2.000 EA
HW1001A25	LOCKWASHER 1/4, ZINC PLT .493 OD, .255 I	2.000 EA
HA1005A02	SLINGER, OD 2.00, ID 1.14, 206 BRG,	1.000 EA
HW4600B33	V-RING SLINGER 1.375 X 1.890 X .35 VITON	1.000 EA
HW2501F21	KEY, 5/16 SQ X 2.375	1.000 EA
HA7000A02	KEY RETAINER RING, 1 1/8 DIA, 1 3/8 DIA	1.000 EA
MJ5001A27	32220KN GRAY SEALER *MIN BUY 4 QTS=1GAL	0.001 QT
85XU0407S04	4X1/4 U DRIVE PIN STAINLESS	2.000 EA
LB1115N	LABEL,LIFTING DEVICE (ON ROLLS)	1.000 EA
MJ1000A02	GREASE, POLYREX EM EXXON (USe 4824-15A)	0.050 LB
37FN3002A01SP	EXFN, PLASTIC, 9.00 OD, 1.155 ID	1.000 EA
MG1025N19	WILKOFASST, 778.50, RELIANCE BLUE-GREEN	0.036 GA
LB1119N	WARNING LABEL	1.000 EA
LC0032	CONNECTION LABEL	1.000 EA
MN416A01	TAG-INSTAL-MAINT no wire (1200/bx) 11/14	1.000 EA
NP2134E	SS CP SUPER-E UL CSA CC REV MTG	1.000 EA
07PA1011	PKG GRP, 07 CAST IRON PK1181	1.000 EA

**AC Induction Motor Performance Data**

Record # 50352 - Typical performance - not guaranteed values

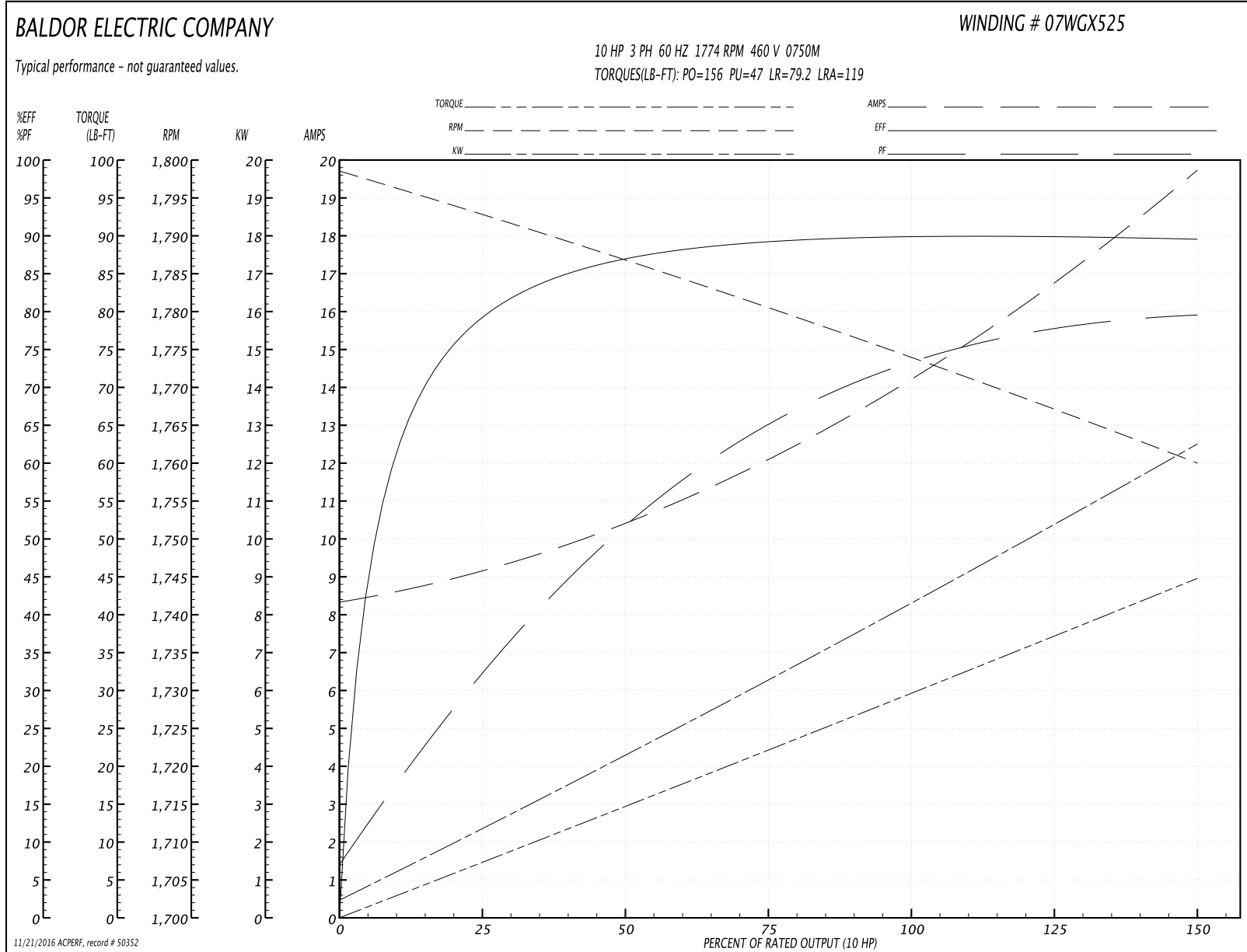
<b>Winding:</b> 07WGX525-R005	<b>Type:</b> 0750M	<b>Enclosure:</b> TEFC
-------------------------------	--------------------	------------------------

Nameplate Data				460 V, 60 Hz: Single Voltage Motor	
Rated Output (HP)	10/2.5			Full Load Torque	29.5 LB-FT
Volts	460			Start Configuration	direct on line
Full Load Amps	14.3/5.9			Breakdown Torque	156 LB-FT
R.P.M.	1770/880			Pull-up Torque	47 LB-FT
Hz	60	Phase	3	Locked-rotor Torque	79.2 LB-FT
NEMA Design Code	A	KVA Code	L	Starting Current	119 A
Service Factor (S.F.)	1.15			No-load Current	8.48 A
NEMA Nom. Eff.	89.5	Power Factor	73	Line-line Res. @ 25°C	0.839 Ω
Rating - Duty	40C AMB-CONT			Temp. Rise @ Rated Load	48°C
S.F. Amps				Temp. Rise @ S.F. Load	56°C
				Locked-rotor Power Factor	39.1
				Rotor inertia	1.23 LB-FT <sup>2</sup>

Load Characteristics 460 V, 60 Hz, 10 HP

% of Rated Load	25	50	75	100	125	150	S.F.
Power Factor	33	52	65	73	77	80	75
Efficiency	79	86.8	89.4	89.9	90	89.6	90
Speed	1792	1787	1781	1774	1767	1760	1770
Line amperes	8.97	10.3	12.1	14.3	16.9	19.6	15.9

Performance Graph at 460V, 60Hz, 10.0HP Typical performance - Not guaranteed values



**AC Induction Motor Performance Data**

Record # 50353 - Typical performance - not guaranteed values

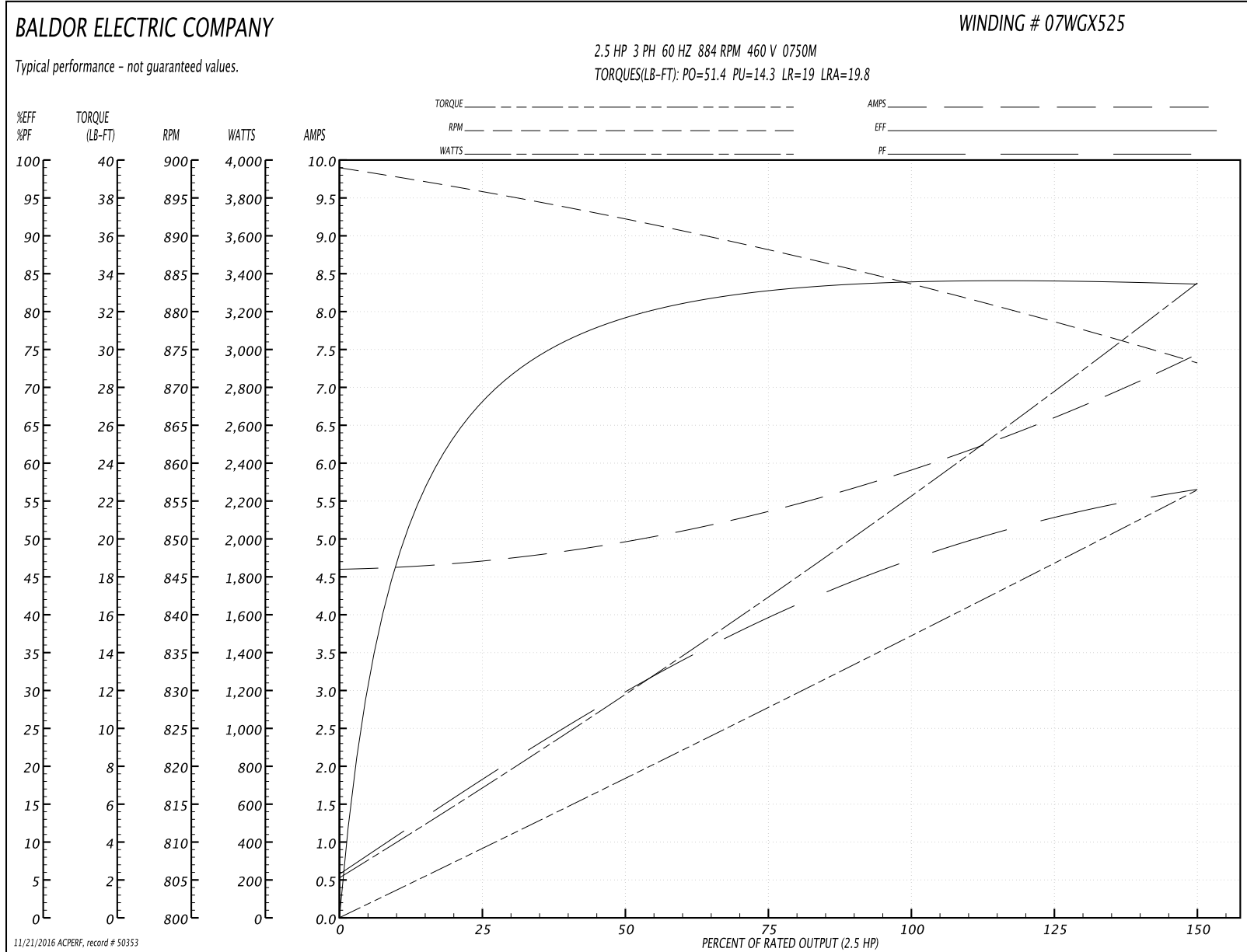
<b>Winding:</b> 07WGX525-R005	<b>Type:</b> 0750M	<b>Enclosure:</b> TEFC
-------------------------------	--------------------	------------------------

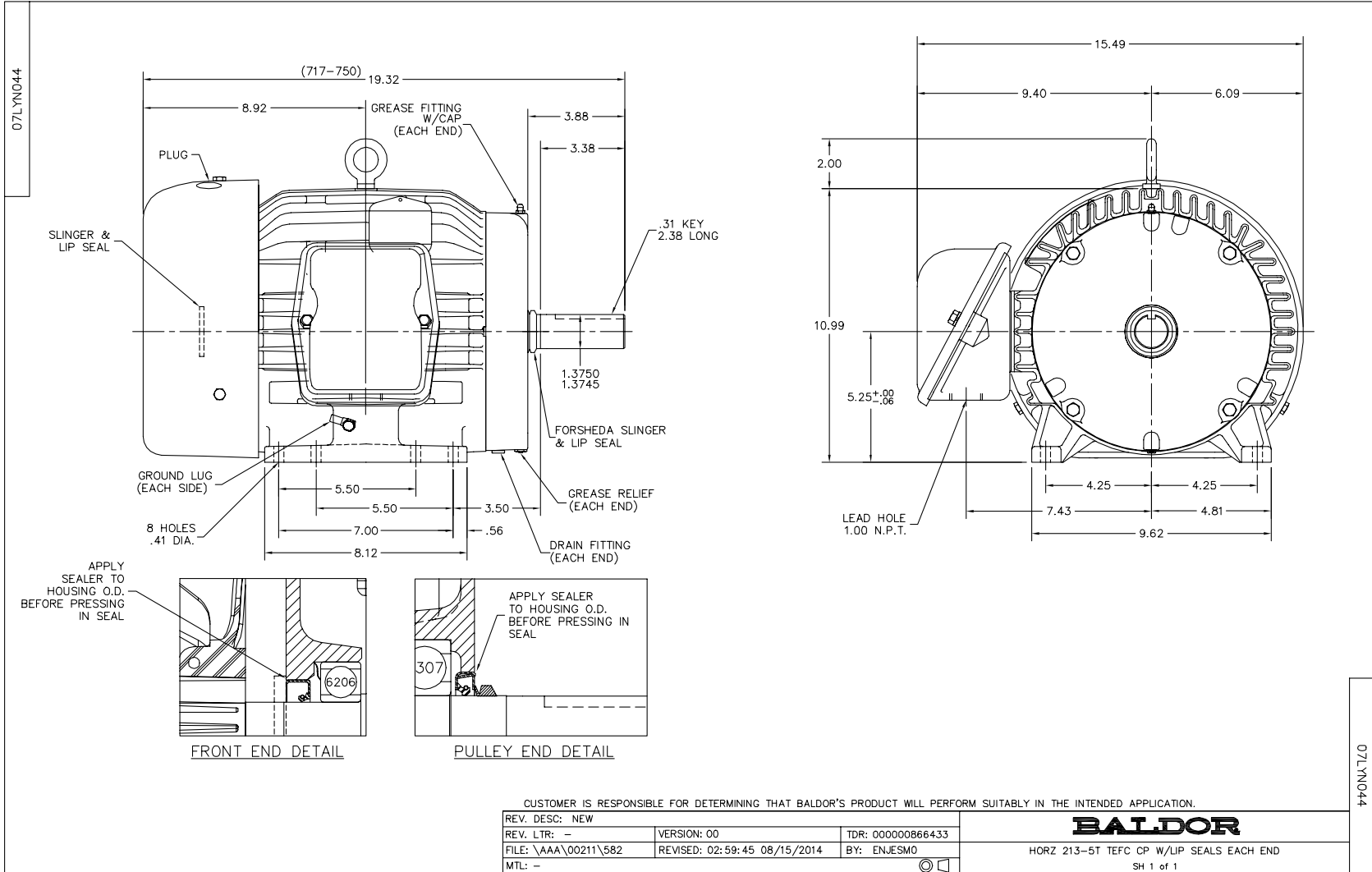
Nameplate Data				460 V, 60 Hz: High Voltage Connection	
Rated Output (HP)	10/2.5			Full Load Torque	14.7 LB-FT
Volts	460			Start Configuration	direct on line
Full Load Amps	14.3/5.9			Breakdown Torque	51.4 LB-FT
R.P.M.	1770/880			Pull-up Torque	14.3 LB-FT
Hz	60	Phase	3	Locked-rotor Torque	19 LB-FT
NEMA Design Code	A	KVA Code	L	Starting Current	19.8 A
Service Factor (S.F.)	1.15			No-load Current	4.6 A
NEMA Nom. Eff.	89.5	Power Factor	73	Line-line Res. @ 25°C	3.36 Ω
Rating - Duty	40C AMB-CONT			Temp. Rise @ Rated Load	28°C
S.F. Amps				Temp. Rise @ S.F. Load	31°C
				Locked-rotor Power Factor	32.5
				Rotor inertia	1.23 LB-FT <sup>2</sup>

Load Characteristics 460 V, 60 Hz, 2.5 HP

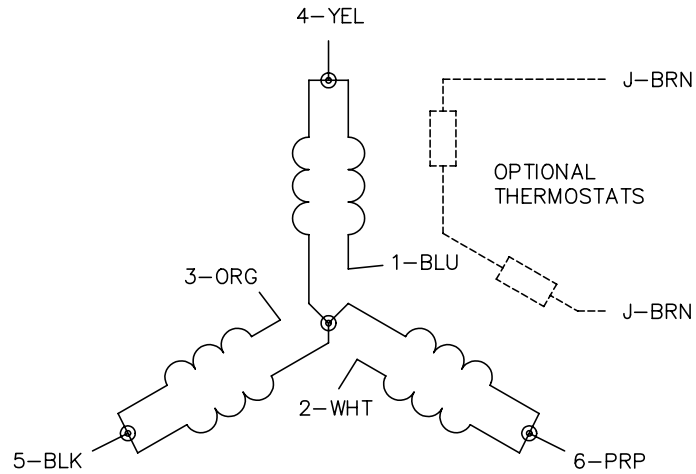
% of Rated Load	25	50	75	100	125	150	S.F.
Power Factor	18	30	40	47	53	57	51
Efficiency	67.6	79.1	82.6	84	84.4	83.5	84.2
Speed	896	892	888	884	879	873	881
Line amperes	4.7	4.97	5.37	5.88	6.58	7.45	6.3

Performance Graph at 460V, 60Hz, 2.5HP Typical performance - Not guaranteed values

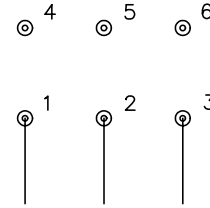




CD0032

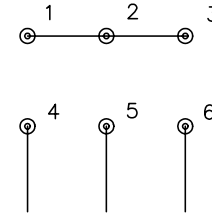


LOW SPEED  
(1Y)



LINE

HIGH SPEED  
(2Y)



LINE

NOTES:

1. INTERCHANGE ANY TWO LINE LEADS TO REVERSE ROTATION.
2. OPTIONAL THERMOSTATS ARE PROVIDED WHEN SPECIFIED.
3. ACTUAL NUMBER OF INTERNAL PARALLEL CIRCUITS MAY BE A MULTIPLE OF THOSE SHOWN ABOVE.
4. LEAD COLORS ARE OPTIONAL. LEADS MUST ALWAYS BE NUMBERED AS SHOWN.

REV. DESC: REVISE TO SHOW OPTIONAL COLORS			
REV. LTR: E	BY: JLP	REVISED: 01/22/99 8:27	TDR: 0171435
CD0032		FILE: AAA00005145	MDL: -
		MTL: -	

**BALDOR ELECTRIC Co.**

3PH, SV, 6 LEADS, 2-SPEED 1-WINDING VARIABLE TORQUE

CD0032